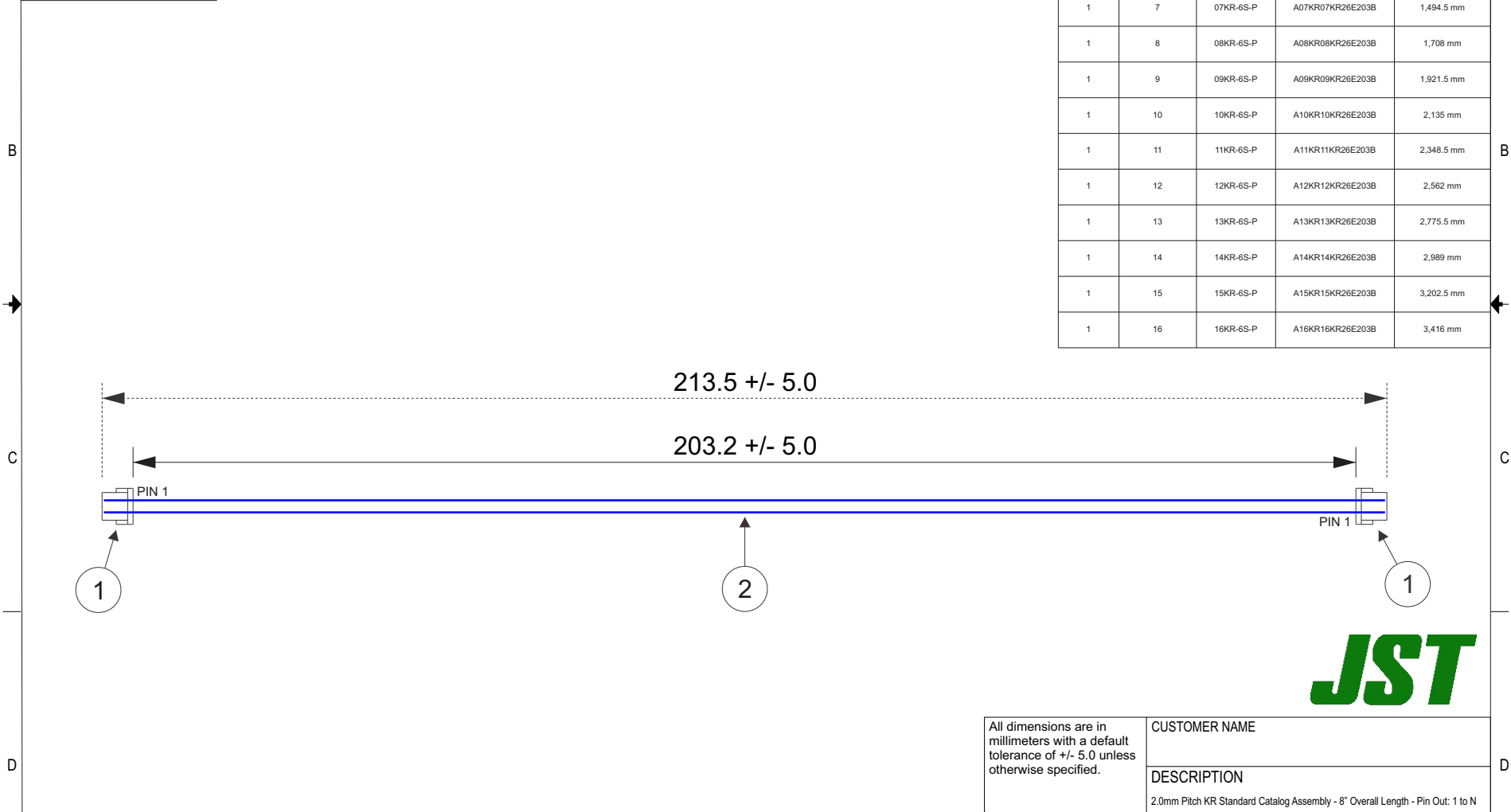


THIS DRAWING CONTAINS INFORMATION THAT IS PROPRIETARY TO J.S.T. AND SHALL NOT BE USED OR SHOWN WITHOUT WRITTEN PERMISSION.

Item No.	Part No.	Description
1	See Table 1	KR Connector
2	UL1061, 26 AWG	Blue
<u>Electrical Specifications</u>		
Current: 1.0A AC/DC		
Voltage: 100V AC/DC		

TABLE 1				
ITEM	NUMBER OF CIRCUITS	CONNECTOR PART NO.	ASSEMBLY PART NO.	TOTAL WIRE REQUIRED
1	2	02KR-6S-P	A02KR02KR26E203B	427 mm
1	3	03KR-6S-P	A03KR03KR26E203B	640.5 mm
1	4	04KR-6S-P	A04KR04KR26E203B	854 mm
1	5	05KR-6S-P	A05KR05KR26E203B	1,067.5 mm
1	6	06KR-6S-P	A06KR06KR26E203B	1,281 mm
1	7	07KR-6S-P	A07KR07KR26E203B	1,494.5 mm
1	8	08KR-6S-P	A08KR08KR26E203B	1,708 mm
1	9	09KR-6S-P	A09KR09KR26E203B	1,921.5 mm
1	10	10KR-6S-P	A10KR10KR26E203B	2,135 mm
1	11	11KR-6S-P	A11KR11KR26E203B	2,348.5 mm
1	12	12KR-6S-P	A12KR12KR26E203B	2,562 mm
1	13	13KR-6S-P	A13KR13KR26E203B	2,775.5 mm
1	14	14KR-6S-P	A14KR14KR26E203B	2,989 mm
1	15	15KR-6S-P	A15KR15KR26E203B	3,202.5 mm
1	16	16KR-6S-P	A16KR16KR26E203B	3,416 mm



ZONE	REV	DESCRIPTION	DATE	APPROVED
	1	Add Electrical Specifications	6/29/2018	LM

All dimensions are in millimeters with a default tolerance of +/- 5.0 unless otherwise specified.		CUSTOMER NAME		
		DESCRIPTION		
		2.0mm Pitch KR Standard Catalog Assembly - 8" Overall Length - Pin Out: 1 to N		
Drawn By: Larissa Mosley	SIZE	CUSTOMER PART NO.	PART NO.	REV
Checked By: Steven Pilkington	SCALE	SEE TABLE 1		
	1:1	DRAWING NO. GAM-528	DATE 6/19/2018	