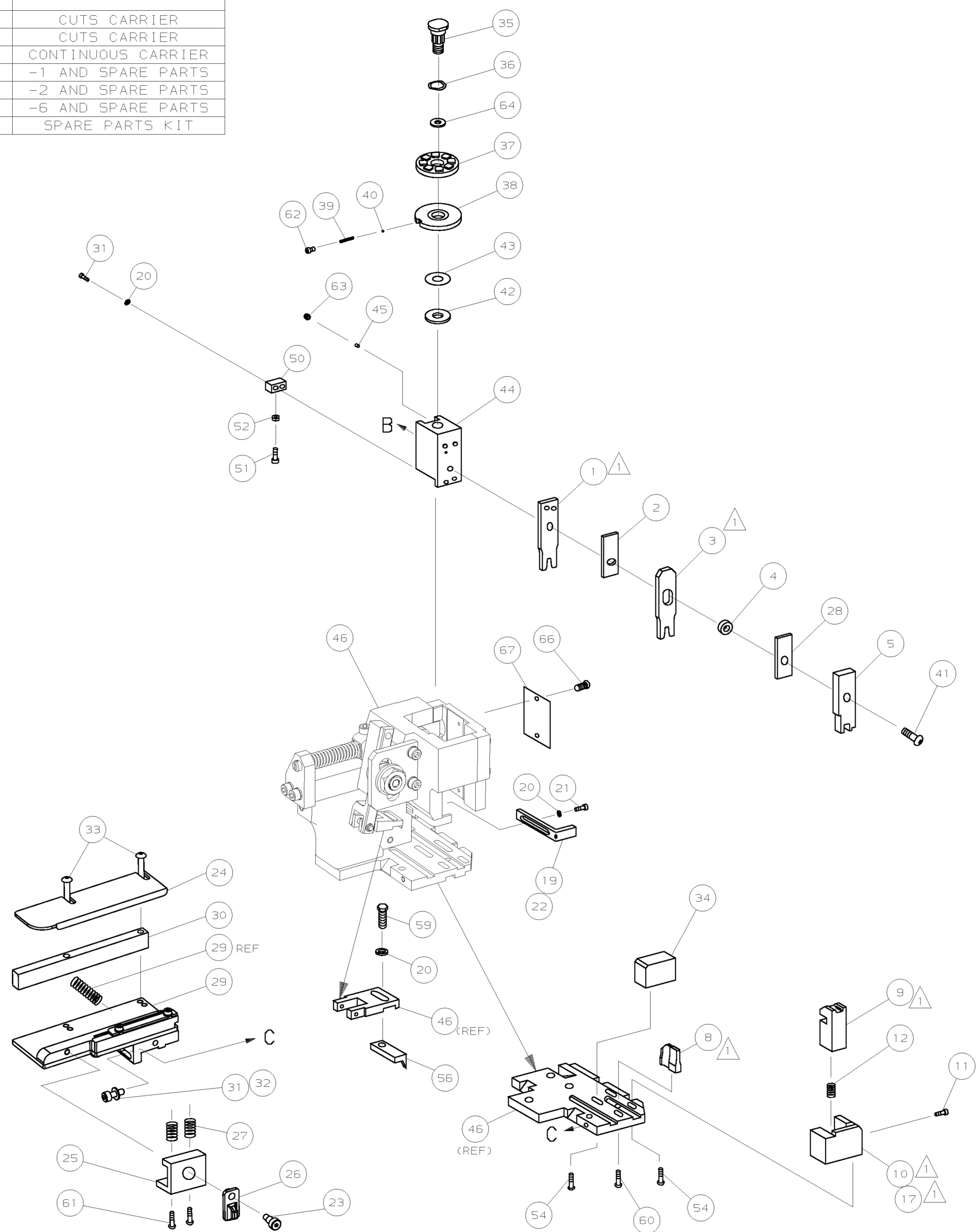


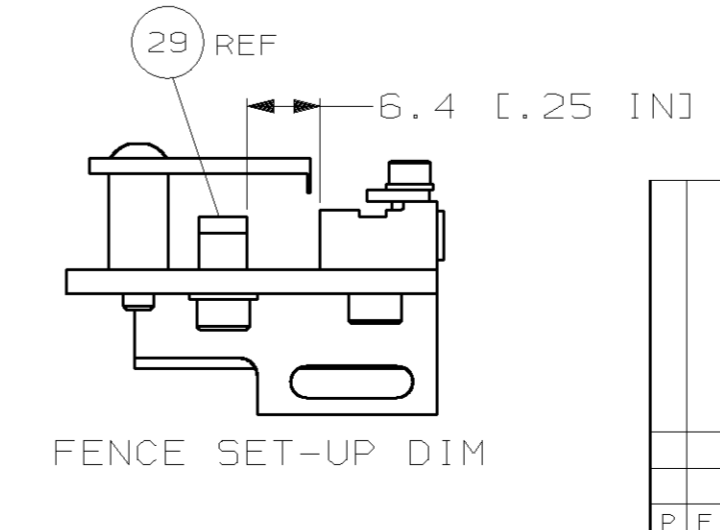
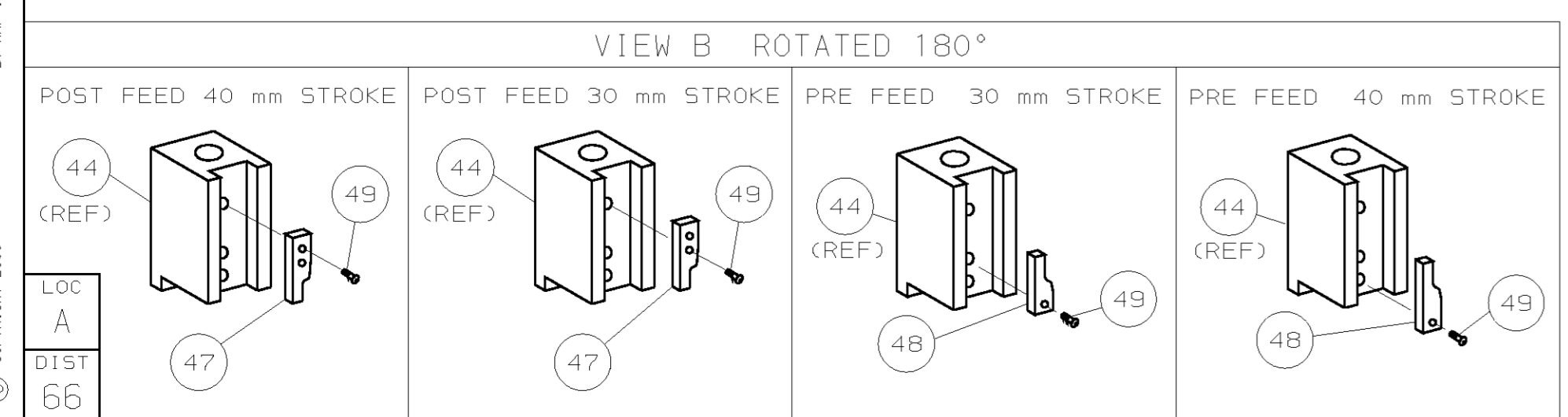
PART NUMBER	REV	FIRST USED	TERMINATOR	FEED TYPE	DESCRIPTION
1426048-1	B	122500-1	LEADMAKER	MECH POST FEED	CUTS CARRIER
1426048-2	B	565435-5	BENCH K & G	MECH PRE FEED	CUTS CARRIER
1426048-6	B	122500-1	LEADMAKER	MECH POST FEED	CONTINUOUS CARRIER
7-1426048-1	B	122500-1	LEADMAKER	MECH POST FEED	-1 AND SPARE PARTS
7-1426048-2	B	565435-5	BENCH K & G	MECH PRE FEED	-2 AND SPARE PARTS
7-1426048-6	B	122500-1	LEADMAKER	MECH POST FEED	-6 AND SPARE PARTS
7-1426048-7	A	-	-	-	SPARE PARTS KIT

CRIMP DATA (AMP TERMINAL)				
TERMINAL NAME: RTV SOCKET FOR 1.57ø PIN				
CRIMP	SIZE	TYPE	RANGE	
WIRE	1.40 [ .055 IN]	F	26 - 22 AWG	
INSUL	2.54 [ .100 IN]	F	1.52-2.45 [ .060-.096 IN]	
WIRE STRIP LENGTH		APPL INSTRUCTION		
3.20-4.00 [ .126-.157 IN]		408-8322		
TERMINAL				FEED
APPL SPEC 114-3118				9.14 [ .360 IN]
TERMINALS APPLIED				
626549	-	-	-	-
-	-	-	-	-
-	-	-	-	-
-	-	-	-	-
-	-	-	-	-
-	-	-	-	-
-	-	-	-	-
-	-	-	-	-
-	-	-	-	-
-	-	-	-	-
WIRE SIZE	CRIMP HEIGHT	PIN PN & LENGTH [IN]		
mm² AWG				
22 AWG	0.81 ±0.05 [ .032 ±.002 IN]	5-354779-2 [ .3250]		
24 AWG	0.74 ±0.05 [ .029 ±.002 IN]	5-354779-8 [ .3280]		
26 AWG	0.69 ±0.05 [ .027 ±.002 IN]	6-354779-3 [ .3305]		
-	-	-		
-	-	-		
-	-	-		
-	-	-		
-	-	-		
-	-	-		
-	-	-		
-	-	-		
-	-	-		



-	1	1	1	1	1	1	1426048	PRINT, APPLICATOR LOG SHEET	73
-	1	1	1	1	1	1	1338705-1	DOCUMENTATION PACKAGE	71
-	-	-	-	-	-	-	-	-	70
-	-	-	-	-	-	-	-	-	69
-	-	-	-	-	-	-	-	-	68
-	1	1	1	1	1	1	461264-1	PLATE, IDENTIFICATION	67
-	2	2	2	2	2	2	21017-2	SCR,DRIVE (#2x.19) ID PLATE	66
-	-	-	-	-	-	-	-	-	65
-	1	1	1	1	1	1	986950-1	WASHER, FLAT PRECISION	64
-	1	1	1	1	1	1	3-18031-0	SCR,SKT 5ET (M6X6 LW)RAM	63
-	1	1	1	1	1	1	18023-9	SCR,SHC (M4X6) INS DISC	62
-	2	2	2	2	2	2	1-18024-5	SCR,BHC (M5X25)DRAG	61
-	1	1	1	1	1	1	18024-7	SCR,BHC (M4X10)ANVIL	60
-	1	1	1	1	1	1	5-18022-2	SCR,HEX (M4X8)FEED FINGER	59
-	-	-	-	-	-	-	-	-	58
-	-	-	-	-	-	-	-	-	57
-	1	1	1	1	1	1	1338685-1	PAWL, FEED	56
-	-	-	-	-	-	-	-	-	55
-	4	4	4	4	4	4	18024-8	SCR,SHC (M4X12)SHEAR HOLDER	54
-	-	-	-	-	-	-	-	-	53
-	1	1	1	1	1	1	18030-1	NUT,HEX (M3)HOLD DOWN	52
-	1	1	1	1	1	1	811242-5	BUMPER, HOLDDOWN	51
-	1	1	1	1	1	1	690753-2	SPACER, TONKER	50
-	1	1	1	1	1	1	18024-3	SCR,BHC (M3X10)CAM	49
-	-	-	-	-	-	-	-	-	48
-	1	-	1	-	1	-	1338675-1	CAM, PRE FEED 30 & 40 mm ST	47
-	1	-	1	-	1	-	1338676-1	CAM, POST FEED 30 & 40 mm ST	46
-	1	1	1	1	1	1	1320999-3	APPLICATOR BASIC SUBASSY	45
-	1	1	1	1	1	1	690191-1	PLUG, NYLON	44
-	1	1	1	1	1	1	1338660-1	RAM	43
-	1	1	1	1	1	1	690125-1	WASHER, LAMINATED	42
-	1	1	1	1	1	1	690124-1	WASHER, RAM	41
-	1	1	1	1	1	1	2-18024-6	SCR,BHC (M8X25)RAM	40
-	1	1	1	1	1	1	23241-1	BALL, STEEL	39
-	1	1	1	1	1	1	2-22278-7	SPRING, COMPRESSION	38
-	1	1	1	1	1	1	1320922-1	DISC, INSULATION	37
-	1	1	1	1	1	1	354777-1	WIRE DISC, PLASTIC	36
-	1	1	1	1	1	1	22480-5	WASHER, SPRING	35
-	1	1	1	1	1	1	690212-1	POST, RAM	34
-	1	1	1	1	1	1	1424186-1	SUPPORT, TERMINAL	33
-	2	2	2	2	2	2	1-18024-0	SCR,BHC (M4X20)STRIP GUIDE	32
-	1	1	1	1	1	1	18027-2	WASHER, FLAT (M4)	31
-	3	3	3	3	3	3	1-18023-2	SCR,SKT CAP (M4X12)MOUNT BLOCK	30
-	1	1	1	1	1	1	1320908-4	SPACER, STRIP GUIDE	29
-	1	1	1	1	1	1	1633073-1	STRIP GUIDE PLATE ASSY	28
-	1	1	1	1	1	1	455888-1	SPACER, FRONT SHEAR DEP	27
-	2	2	2	2	2	2	1-22284-0	SPRING, DRAG	26
-	1	1	1	1	1	1	356835-1	LEVER, DRAG RELEASE	25
-	1	1	1	1	1	1	240792-1	DRAG, TERMINAL	24
-	1	1	1	1	1	1	1320928-1	PLATE, STRIP GUIDE	23
-	1	1	1	1	1	1	980371-4	SCR,SHC SHLD	22
-	1	-	1	-	1	-	690472-2	STRIPPER	21
-	1	1	1	1	1	1	1-18023-1	SCR,SHC (M4X10)STRIPPER	20
-	4	4	4	4	4	4	18025-2	WASHER, LOCK (M4)STRIPPER	19
-	-	1	-	-	1	-	690472-1	STRIPPER	18
-	-	-	-	-	-	-	-	-	17
-	-	-	-	-	-	-	-	-	16
-	-	-	-	-	-	-	-	-	15
-	-	-	-	-	-	-	-	-	14
-	-	-	-	-	-	-	-	-	13
-	1	1	1	1	1	1	5-22280-0	SPRING, SHEAR	12
-	1	1	1	1	1	1	356885-4	STOP, SHEAR	11
-	-	1	1	-	1	1	1320921-1	HOLDER, SHEAR, FRONT (CUT)	10
-	1	1	1	1	1	1	462006-1	SHEAR, FLOAT (FRONT)	9
-	1	2	2	2	1	1	1333201-4	ANVIL	8
-	-	-	-	-	-	-	-	-	7
-	-	-	-	-	-	-	-	-	6
-	1	1	1	1	1	1	2-455889-0	DEPRESSOR, SHEAR (FRONT)	5
-	1	1	1	1	1	1	2-238011-2	SPACER, BLOCK CRIMPER	4
-	1	2	2	2	1	1	4-456134-8	CRIMPER, INSULATION	3
-	1	1	1	1	1	1	455888-4	SPACER, CRIMPER	2
-	1	2	2	2	1	1	456402-1	CRIMPER, WIRE	1

- RECOMMENDED SPARE PARTS.
- GREASE RAM, CAM, CAM FOLLOWER AND FEED ROD LIGHTLY.
- LUBRICATE DAILY PER THE APPLICATOR INSTRUCTION SHEET SUPPLIED WITH THE APPLICATOR.



DO NOT SCALE PRINT. TOLERANCES UNLESS OTHERWISE SPECIFIED. 1 PLC DEC ±0.5 [ .02 IN] 2 PLC DEC ±. 3 PLC DEC ±. ANGLES ±. SURF TEXTURE. REMOVE BURRS, BREAK SHARP EDGES RO.38 MAX

DR: M.CLIFFORD 19 JUN 00 APP: F.BACKHURST 19 JUN 00  
 CHK: L.LOFFHOUSE 12-09-00 REL: M.CLIFFORD 12-09-00

AMP Incorporated Harrisburg, PA 17105-3608

NAME: SIDE FEED HD-I APPLICATOR MACHINE REF: HD-I APPL

SCALE: 1:1 DWG NO: 1426048 SHEET: 1 OF 1 REV: B

CASE CODE: 00779 CUSTOMER AND ASSEMBLY DRAWING RESTRICTED TO:

THIS DRAWING IS A CONTROLLED DOCUMENT.

LAYOUT L1426048 SET UP GAGE 458637-3

2000 RELEASED FOR PUBLICATION BY AMP INCORPORATED. ALL RIGHTS RESERVED.

THIS DRAWING IS UNRELEASABLE. AMP 1756 REV 3-92