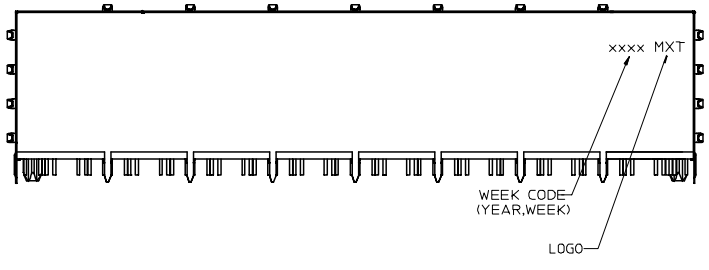
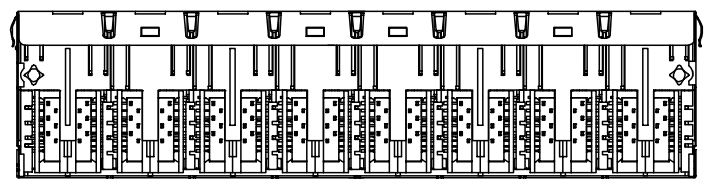
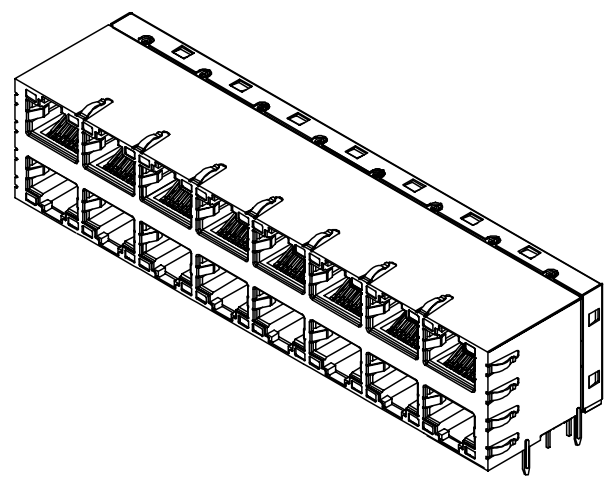
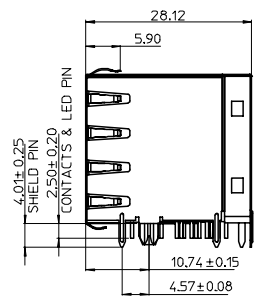
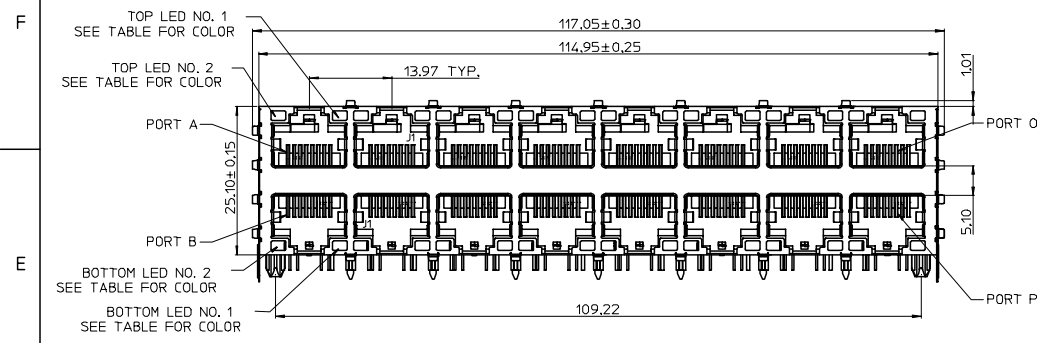


10 9 8 7 6 5 4 3 2 1



D

C

B

A

RoHS FOR 48033-4900	DESCRIPTION
EC NO: SH2007-0131	DRWN: ALLIN
2006/10/04	2006/10/04
CHKD:	APPR: WWSCHANG
2006/10/04	2006/10/04
REV	

QUALITY SYMBOLS	▽=0
	∇=0

GENERAL TOLERANCES (UNLESS SPECIFIED)	mm	INCH
4 PLACES	± ---	± ---
3 PLACES	± ---	± ---
2 PLACES	± 0.25	± ---
1 PLACE	± 0.25	± ---
ANGULAR ± 3 °		
DRAFT WHERE APPLICABLE MUST REMAIN WITHIN DIMENSIONS		

DIMENSION STYLE		SCALE	DESIGN UNITS	THIRD ANGLE PROJECTION
MM ONLY			METRIC	
DRAWN BY	DATE	TITLE		
LINDA	2006/08/08	MODULAR JACK STACKED 2X8 RA, 10/100 ETHERNET W/ LEDS, MAGNETICS		
CHECKED BY	DATE			
ALLEN LIN	2006/08/10			
APPROVED BY	DATE			
ERICK LAN	2006/08/10			
MATERIAL NO.	DOCUMENT NO.			
48033-4900	SD-48033-005			
SIZE	THIS DRAWING CONTAINS INFORMATION THAT IS PROPRIETARY TO MOLEX INCORPORATED AND SHOULD NOT BE USED WITHOUT WRITTEN PERMISSION			
A3				

MATERIAL NO.		DOCUMENT NO.	SHEET NO.
48033-4900		SD-48033-005	1 OF 3

9 8 7 6 5 4 3 2 1

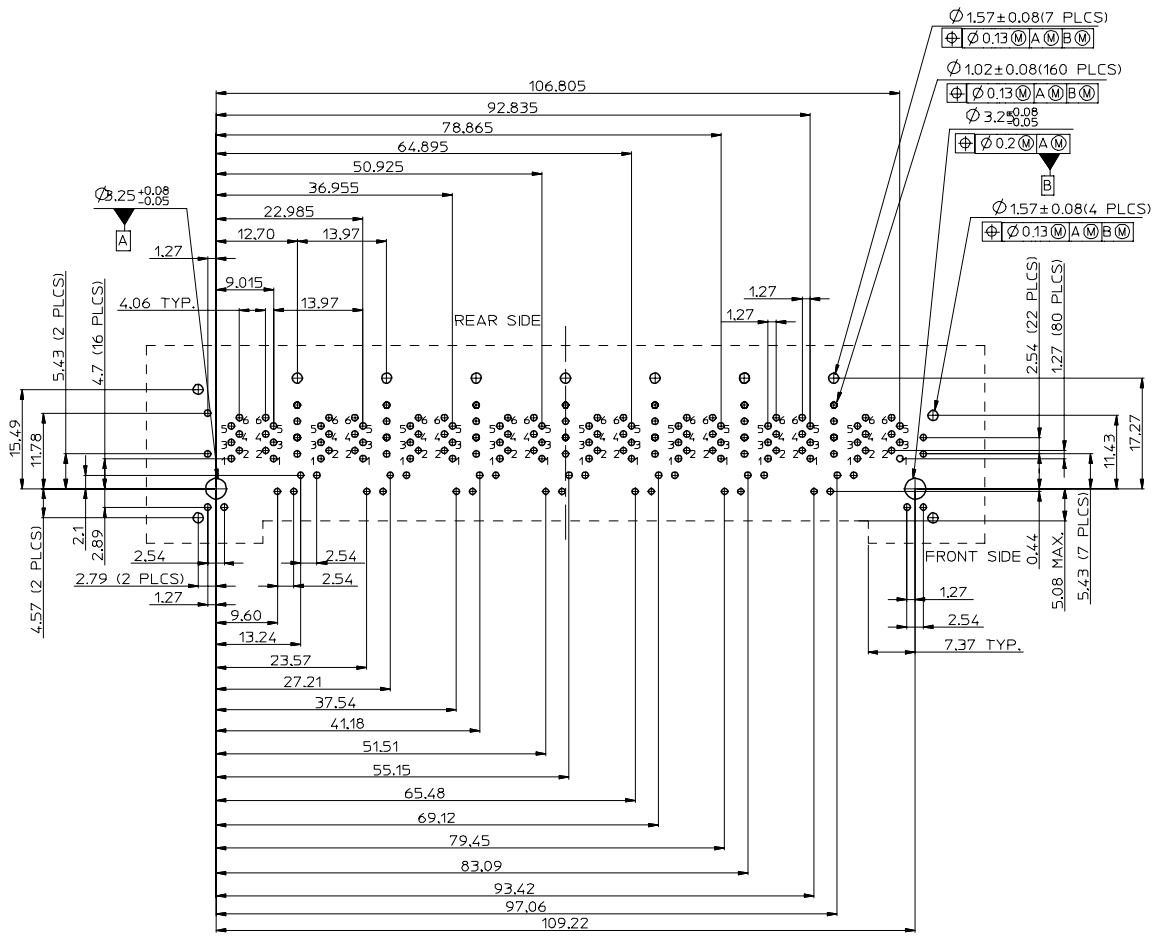
NOTES:  
 1.MATERIAL:  
 PLASTIC HOUSING: POLYAMIDE, GLASS FIBER FILLED,UL94V-0,COLOR:BLACK  
 SHIELD: BRASS.  
 BACK SHIELD: BRASS.  
 CONTACTS: PHOSPHOR BRONZE.  
 LED: DIFFUSED EPOXY LENS,CARBON STEEL LEAD FRAME  
 2.PLATING:  
 SHIELD:SOLDER TAIL:TN(Sn) THICKNESS-100 MICRONCH MINIMUM UNDER PLATE(NICKEL(Ni) PLATED OVERALL (SOLDERING AVAILABLE).  
 TERMINAL CONTACT AREA:GOLD(Au) THICKNESS-50 MICRONCH/127 MICROMETER  
 SOLDER TAIL:TN(Sn) THICKNESS-100 MICRONCH MINIMUM UNDER PLATE(NICKEL(Ni) PLATED OVERALL.  
 LED:TN/SILVER/NICKEL/COPPER PLATING  
 3.MAGNETICS:  
 IMPEDANCE:100 OHMS  
 TRANSMIT OPEN CIRCUIT INDUCTANCE (OCL):350uH (MIN)@ 100KHZ,0.1 VRMS WITH 8 mA DC BIAS  
 TURNS RATIO (CHIP:CABLE):TX:41,RX:14  
 PERFORMANCE:  
 TRANSMIT BIDIRECTIONAL J3 AND J6  
 RECIEVE BIDIRECTIONAL J1 AND J2

FREQUENCY	INSERTION LOSS	RETURN LOSS	CROSSTALK ATTENUATION	COMMON MODE REJECTION RATIO	
				TX	RX
1.0MHZ-15.0MHZ	0.3dB(MAX)	18.0dB(MIN)	35.0dB(MIN)	46.0dB(MIN)	35.0dB(MIN)
15.1MHZ-60.0MHZ	0.6dB(MAX)	16.0dB(MIN)	26.0dB(MIN)	46.0dB(MIN)	35.0dB(MIN)
60.1MHZ-80.0MHZ	1.1dB(MAX)	15.0dB(MIN)	24.0dB(MIN)	42.0dB(MIN)	33.0dB(MIN)
80.1MHZ-100.0MHZ	1.1dB(MAX)	12.0dB(MIN)	24.0dB(MIN)	42.0dB(MIN)	33.0dB(MIN)

DIELECTRIC (ISOLATION VOLTAGE):  
 2250 VDC (1mA CUTOFF CURRENT) FOR 60 SECONDS DURATION WITH DECOUPLING CAP  
 ALL BRIDGED ON EITHER SIDE OF MAGNETICS PACKAGE FOR RJ-45 CONTACT  
 4.RECOMMENDED PCB THICKNESS 2.00mm(.079")  
 5.SUGGESTED OPERATING CURRENT FOR THE LED IS 20mA  
 6.PRODUCT SPECIFICATION REFER TO PS-48033-002  
 7.TEST SUMMARY REFER TO TS-48033-005  
 8.PACKAGING SPECIFICATION REFER TO PK-48033-005  
 9.LEAD FREE AND RoHS COMPLIANT PRODUCT

LED ELECTRICAL SPECIFICATION

PARAMETER	YELLOW (TYP.)	GREEN (TYP.)	UNITS	TEST CONDITIONS
POWER DISSIPATION	100	100	mW	
REVERSE VOLTAGE	5	5	V	
PEAK WAVELENGTH	585	565	nm	IF=20mA
FORWARD VOLTAGE	2.1 MAX.=2.5	2.1 MAX.=2.5	V	IF=20mA

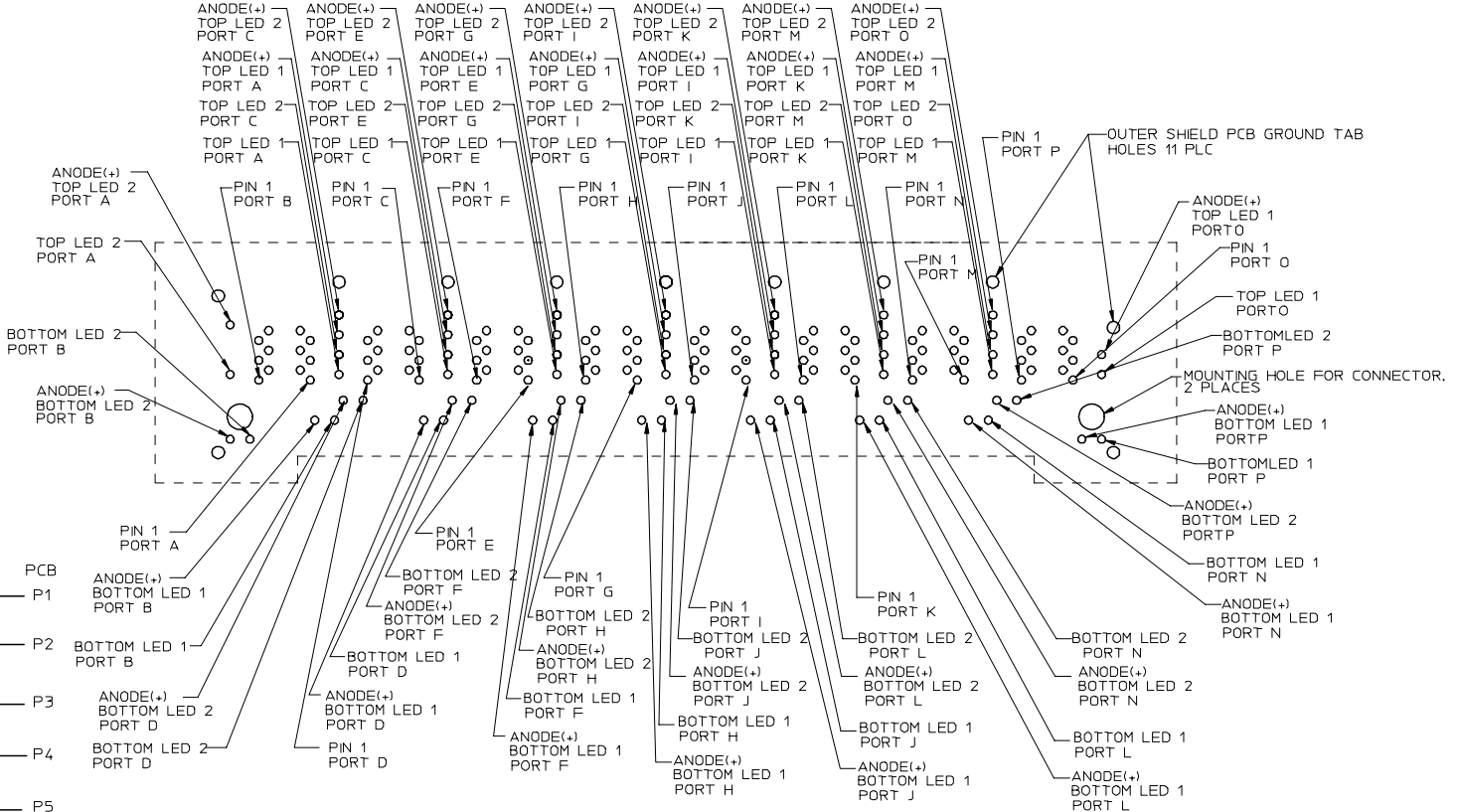
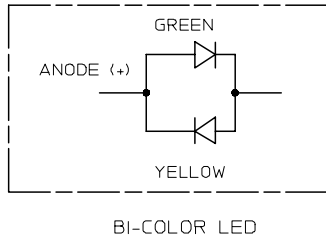


RECOMMENDED PC BOARD LAYOUT  
 (VIEWED FROM COMPONENT SIDE)

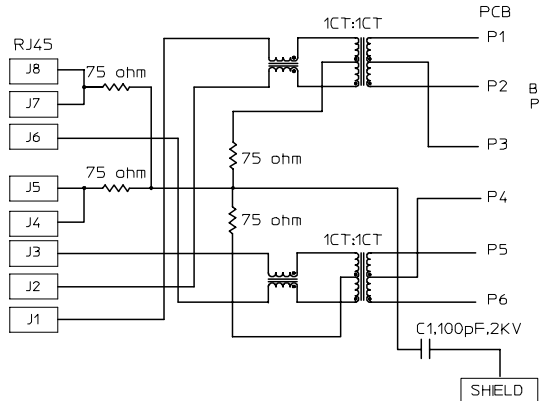
SEE SHEET 1 EC NO: SH2007-0131 DRWN:ALLIN CHKD: APPR:WWSCHANG	2006/10/04 2006/10/04 2006/10/04	DESCRIPTION REV	QUALITY SYMBOLS ▽=0 ▽=0	GENERAL TOLERANCES (UNLESS SPECIFIED)	DIMENSION STYLE MM ONLY	SCALE 1:1	DESIGN UNITS METRIC	THIRD ANGLE PROJECTION		
			4 PLACES ± --- ± ---	mm INCH	DRAWN BY LINDA	DATE 2006/08/08	TITLE MODULAR JACK STACKED 2X8 RA, 10/100 ETHERNET W/ LEDS, MAGNETICS			
			3 PLACES ± --- ± ---	2 PLACES ± 0.25 ± ---	1 PLACE ± 0.25 ± ---	CHECKED BY ALLEN LIN	DATE 2006/08/10	APPROVED BY ERICK LAN	DATE 2006/08/10	MOLEX INCORPORATED
			ANGULAR ± 3 °			MATERIAL NO. 48033-4900	DOCUMENT NO. SD-48033-005	SHEET NO. 2 OF 3		
DRAFT WHERE APPLICABLE MUST REMAIN WITHIN DIMENSIONS				THIS DRAWING CONTAINS INFORMATION THAT IS PROPRIETARY TO MOLEX INCORPORATED AND SHOULD NOT BE USED WITHOUT WRITTEN PERMISSION						

10 9 8 7 6 5 4 3 2 1

F  
E  
D  
C  
B  
A



LED HOLE DESIGNATIONS ( VIEWED FROM COMPONENT SIDE )



MAGNETIC SCHEMATIC

SEE SHEET 1 EC NO: SH2007-0131 DRWN: ALLIN CHKD: APPR: WWSCHANG 2006/10/04 2006/10/04 2006/10/04	QUALITY SYMBOLS ▽=0 ▽=0	GENERAL TOLERANCES (UNLESS SPECIFIED)		DIMENSION STYLE MM ONLY		SCALE 1:1	DESIGN UNITS METRIC	THIRD ANGLE PROJECTION																					
		<table border="1"> <thead> <tr> <th></th> <th>mm</th> <th>INCH</th> </tr> </thead> <tbody> <tr> <td>4 PLACES</td> <td>± ---</td> <td>± ---</td> </tr> <tr> <td>3 PLACES</td> <td>± ---</td> <td>± ---</td> </tr> <tr> <td>2 PLACES</td> <td>± 0.25</td> <td>± ---</td> </tr> <tr> <td>1 PLACE</td> <td>± 0.25</td> <td>± ---</td> </tr> <tr> <td colspan="3">ANGULAR ± 3 °</td> </tr> </tbody> </table>			mm	INCH	4 PLACES	± ---	± ---	3 PLACES	± ---	± ---	2 PLACES	± 0.25	± ---	1 PLACE	± 0.25	± ---	ANGULAR ± 3 °			DRAWN BY LINDA		DATE 2006/08/08		TITLE MODULAR JACK STACKED 2X8 RA, 10/100 ETHERNET W/ LEDS, MAGNETICS			
			mm	INCH																									
		4 PLACES	± ---	± ---																									
		3 PLACES	± ---	± ---																									
2 PLACES	± 0.25	± ---																											
1 PLACE	± 0.25	± ---																											
ANGULAR ± 3 °																													
DRAFT WHERE APPLICABLE MUST REMAIN WITHIN DIMENSIONS		APPROVED BY ERICK LAN		DATE 2006/08/10		MOLEX INCORPORATED																							
MATERIAL NO. 48033-4900		DOCUMENT NO. SD-48033-005		SHEET NO. 3 OF 3																									
THIS DRAWING CONTAINS INFORMATION THAT IS PROPRIETARY TO MOLEX INCORPORATED AND SHOULD NOT BE USED WITHOUT WRITTEN PERMISSION																													

9 8 7 6 5 4 3 2 1