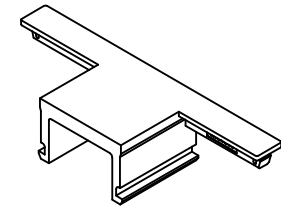
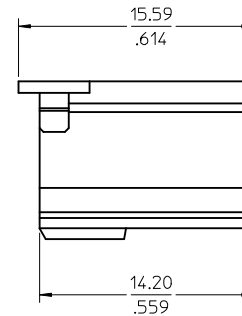
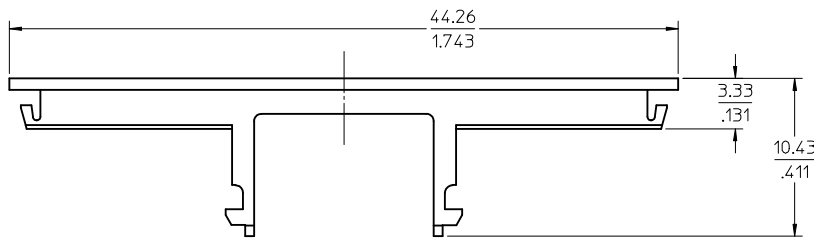
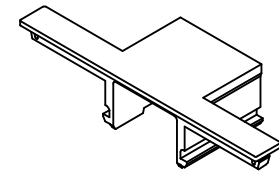
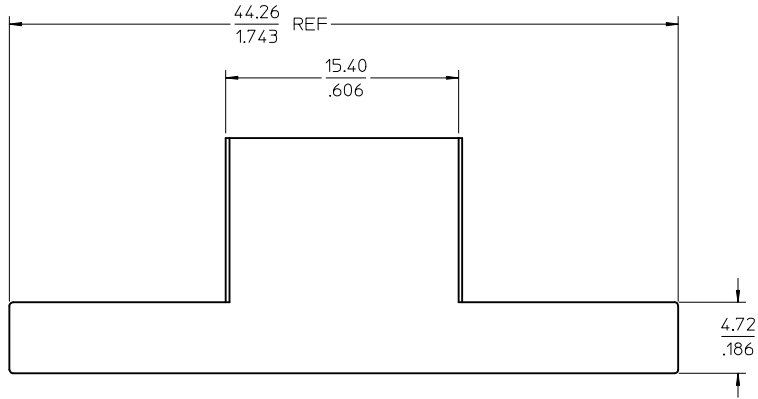


NOTES:

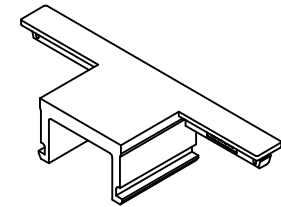
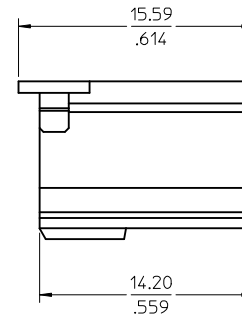
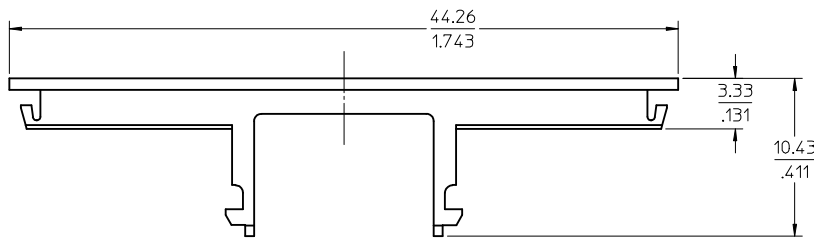
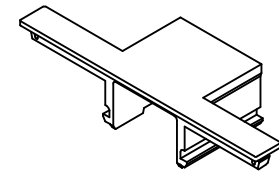
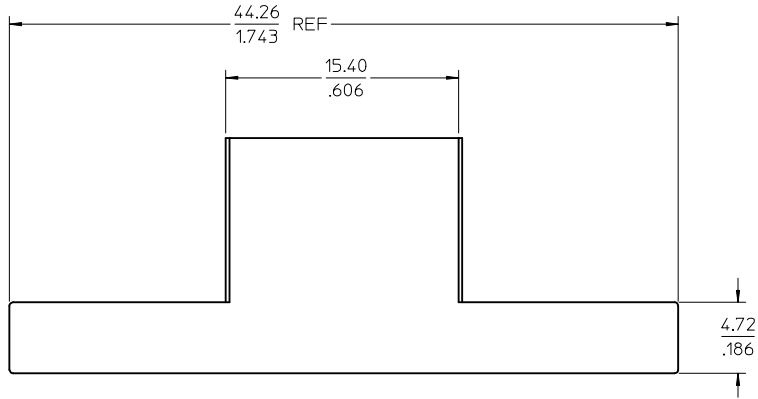
- 1. MATERIAL: PA6 NYLON UNFILLED 89992-1195 - COLOR BLACK
- 2. PART FOR USE WITH HOUSING 46707-0001
- 3. PART IS ROHS COMPLIANT
- 4. PACKAGED PER MOLEX PACKAGING SPEC PK-46708-001



RVD TO MODEL EC NO: UCP2009-2016 DRWN: JSCHAFFER 2009/02/26 CHKD: 2009/02/26 APPR: APATEL 2009/03/10	QUALITY SYMBOLS ▽=0 ▽=0 ▽=0	GENERAL TOLERANCES (UNLESS SPECIFIED)		DIMENSION STYLE MM/IN	SCALE 4:1	DESIGN UNITS METRIC	THIRD ANGLE PROJECTION		
		4 PLACES ± --- ± ---	3 PLACES ± --- ± .008	DRAWN BY JSCHAFFER	DATE 2009/02/12	TITLE TPA FOR HSG RECEPTACLE TEN50 WIRE HALOGEN FREE			
		2 PLACES ± 0.20 ± .013	1 PLACE ± 0.33 ± ---	CHECKED BY MDATA	DATE 2009/02/13	APPROVED BY APATEL			
		ANGULAR ± 1/2°		MATERIAL NO. 46708-0001		DOCUMENT NO. SD-46708-001		SHEET NO. 1 OF 1	
1	DESCRIPTION	DRAFT WHERE APPLICABLE MUST REMAIN WITHIN DIMENSIONS		THIS DRAWING CONTAINS INFORMATION THAT IS PROPRIETARY TO MOLEX INCORPORATED AND SHOULD NOT BE USED WITHOUT WRITTEN PERMISSION					

NOTES:

- 1. MATERIAL: PA6 NYLON UNFILLED 89992-1195 - COLOR BLACK
- 2. PART FOR USE WITH HOUSING 46707-0001
- 3. PART IS ROHS COMPLIANT
- 4. PACKAGED PER MOLEX PACKAGING SPEC PK-46708-001



RVD TO MODEL EC NO: UCP2009-2016 DRWN: JSCHAFFER 2009/02/26 CHKD: 2009/02/26 APPR: APATEL 2009/03/10	DESCRIPTION REV	QUALITY SYMBOLS	GENERAL TOLERANCES (UNLESS SPECIFIED)		DIMENSION STYLE	SCALE	DESIGN UNITS	THIRD ANGLE PROJECTION		
		▽=0	mm	INCH	MM/IN	4:1	METRIC	TITLE		
		▽=0	4 PLACES ± --- ± ---	3 PLACES ± --- ± .008	2 PLACES ± 0.20 ± .013	1 PLACE ± 0.33 ± ---	DRAWN BY JSCHAFFER	DATE 2009/02/12	TPA FOR HSG RECEPTACLE	
		▽=0	ANGULAR ± 1/2°		DRAFT WHERE APPLICABLE MUST REMAIN WITHIN DIMENSIONS		CHECKED BY MDATA	DATE 2009/02/13	TEN50 WIRE	
1					APPROVED BY APATEL	DATE 2009/02/16	HALOGEN FREE			
					MATERIAL NO. 46708-0001	DOCUMENT NO. SD-46708-001	MOLEX INCORPORATED			
					SIZE C	THIS DRAWING CONTAINS INFORMATION THAT IS PROPRIETARY TO MOLEX INCORPORATED AND SHOULD NOT BE USED WITHOUT WRITTEN PERMISSION		SHEET NO. 1 OF 1		