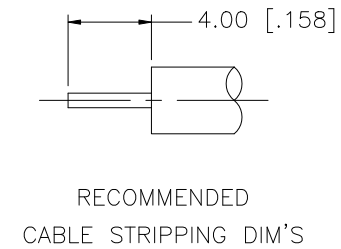
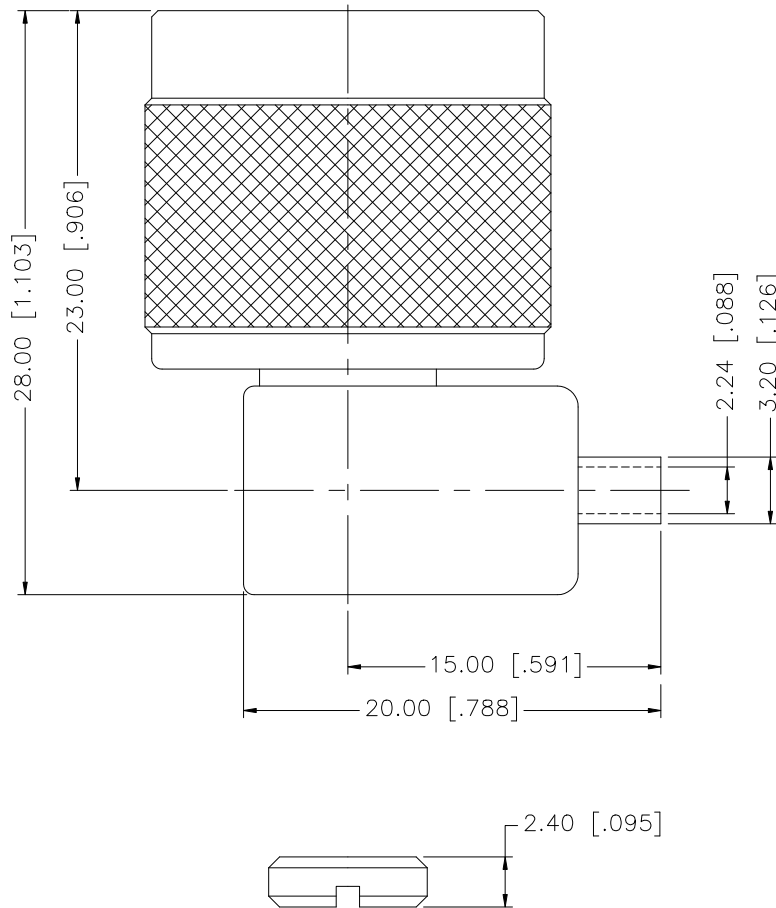


REV.	DATE	DESCRIPTION
NC	03/23/99	INITIAL RELEASE
A	05/22/07	UPDATE DRAWING FORMAT
B	09/20/07	REVISE BODY PLATING TO NEXCOTE



				UNLESS OTHERWISE SPECIFIED DIMENSIONS ARE IN MILLIMETERS, DIMENSIONS IN [ ] ARE IN INCHES AND FOR CUSTOMER REFERENCE ONLY.	APPROVALS	DATE	<b>Amphenol Connex</b>			
8					DRAWN	G.R.S.				09/20/07
7					CHECKED			PART NO. 172235		
6					ISSUED					
5					SHEET	1 OF 1		REV. B    SIZE A    SCALE NA		
4	BARREL	BRASS	GOLD	1	CAD FILE C:/172/172235.DWG					
3	CONTACT PIN	BRASS	GOLD	1	DO NOT SCALE DRAWING					
2	INSULATOR	TEFLON	NATURAL	1						
1	BODY	BRASS	NEXCOTE	1						

UNLESS OTHERWISE SPECIFIED DIMENSIONS ARE IN MILLIMETERS, DIMENSIONS IN [ ] ARE IN INCHES AND FOR CUSTOMER REFERENCE ONLY.

UNLESS OTHERWISE SPECIFIED TOLERANCES FOR MILLIMETERS ARE:  
0.5 - 8mm ± 0.20mm  
8 - 30mm ± 0.40mm  
30 - 120mm ± 0.50mm

UNLESS OTHERWISE SPECIFIED TOLERANCES FOR INCHES ARE:  
.020 - .315 ± 0.007"  
.315 - 1.180 ± 0.015"  
1.180 - 4.724 ± 0.020"

APPROVALS	DATE
DRAWN G.R.S.	09/20/07
CHECKED	
ISSUED	
SHEET 1 OF 1	
CAD FILE C:/172/172235.DWG	

**Amphenol Connex**

N R/A DIRECT SOLDER PLUG  
(FOR .085", .086" SEMI RIGID CABLE)

172235

DWG. NO. 172235.DWG	REV. B	SIZE A	SCALE NA
---------------------	--------	--------	----------