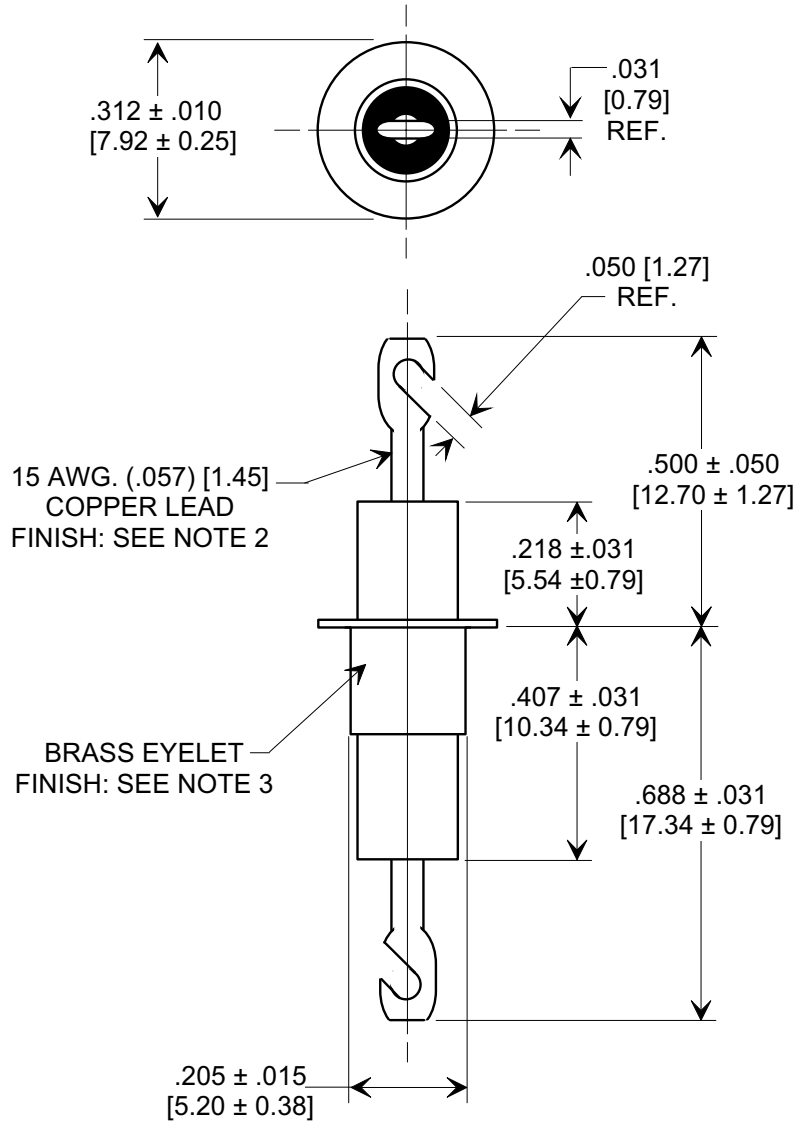
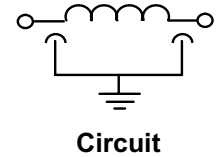
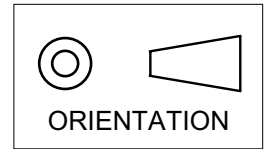


MARKETING SALES DRAWING
DIMENSIONS IN INCHES - DO NOT SCALE THIS DRAWING
DIMENSIONS IN METRIC - []

Electrical Testing
per Tusonix standard
test plans and Mil-Std-202
Test Methods.



NOTES:

- TUSONIX STANDARD PART NUMBER: 4106-000.
TUSONIX RoHS COMPLIANT PART NUMBER: 4106-000 LF.
CUSTOMER MUST SPECIFY STANDARD OR RoHS PART NUMBER WHEN ORDERING.
- LEAD FINISH: STANDARD PART #: 60/40 SOLDER PLATED. RoHS PART #: SILVER PLATED.
- EYELET FINISH: STANDARD PART #: 60/40 SOLDER PLATED. RoHS PART #: SILVER PLATED.
- PART MARKING: STANDARD PART: NO MARKING. RoHS PART: GREEN DOT IDENTIFIER.

| MIN. CAP (pF) | WORKING VOLTAGE (WVDC) | | CURRENT Idc | I.R. MIN. @ 100 (VDC) | DWV | MINIMUM NO-LOAD INSERTION LOSS | | | |
|---------------|------------------------|------------------|-------------|-----------------------|----------|--------------------------------|---------|-------|--------|
| | 85°C | 125°C | | | | 10 MHz | 100 MHz | 1 GHz | 10 GHz |
| 3000 | 500 DC 350 AC | 500 DC 350 AC | 25A | 10 G | 1250 VDC | ---- | 50 | 50 | 50 |

| | | | | | | |
|--|----------|--|-----------------------------------|---|---|-----------------|
| REVISION RECORD Original Release C.O. 20040219-2-01 ADDED NOTES 1-4. S.M. 07-26-05 20050718-3-02 | 0 | REVISION RECORD Original Release C.O. 20040219-2-01 ADDED NOTES 1-4. S.M. 07-26-05 20050718-3-02 | 1 | --- TOLERANCES-- Unless Otherwise Specified | Title EYELET STYLE EMI FILTER | |
| | | | DECIMAL ± // // // | Drawn L.E. 02-19-04 | Scale 3 X | |
| | | | TUSONIX TUCSON, ARIZONA | Approved T.C. 02-19-04 | A | 4106-000 |
| | | | | | | |

X-2015 Rev-0