

CUSTOMER PRINT

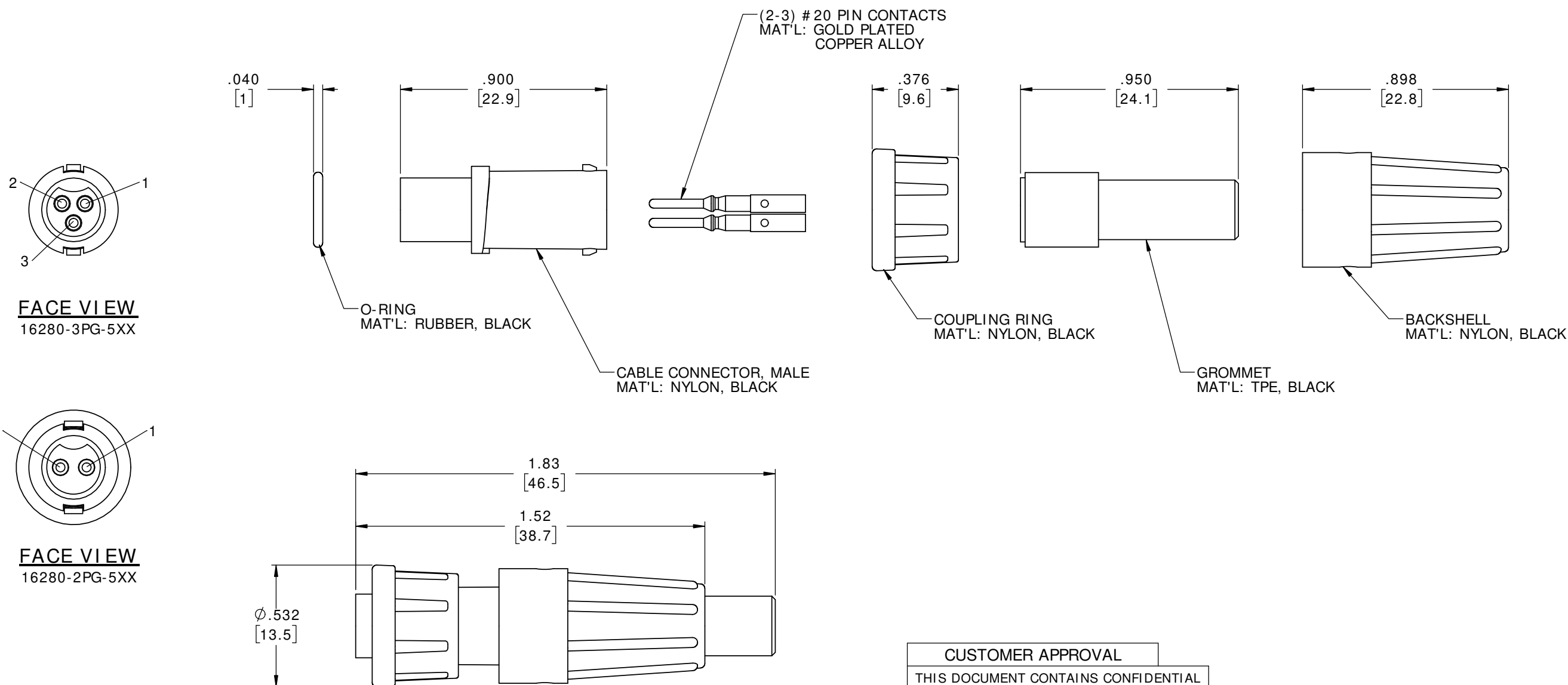
PART NUMBER: 16280-XPG-5XX

ASS'Y P/N	CONTACT QTY
16280-2PG-5XX	2
16280-3PG-5XX	3

ASS'Y P/N	GROMMET SIZE
16280-XPG-518	CABLE O.D. .175-.185 [4.4-4.7]
16280-XPG-521	CABLE O.D. .205-.215 [5.2-5.5]
16280-XPG-522	CABLE O.D. .215-.225 [5.5-5.7]

NOTES:

1. ALL PARTS TO BE BULK PACKED
2. SEE DRAWING HPMCSTD FOR HOLE PATTERN
3. ALL DIMENSIONS ARE REFERENCE EXCEPT THOSE WITH A TOLERANCE



FACE VIEW
16280-3PG-5XX

FACE VIEW
16280-2PG-5XX

ASSEMBLED VIEW
FOR CUSTOMER REF. ONLY

DIMENSIONS IN BRACKETS [] ARE IN MILLIMETERS


CUSTOMER APPROVAL

THIS DOCUMENT CONTAINS CONFIDENTIAL INFORMATION PROPRIETARY TO CONXALL CORPORATION. ANY REPRODUCTION, DISCLOSURE, OR USE OF THIS DOCUMENT / INFORMATION IS EXPRESSLY PROHIBITED UNLESS AUTHORIZED IN WRITING BY CONXALL CORPORATION.

APPROVED BY: _____

DATE: _____

RoHS COMPLIANT

A	MA	04-30-18	DRAWING CREATED PER DOR 18-E149SL #8	
REV.	INIT.	DATE	DESCRIPTION	
	MA	04-30-18	ORIG. DRAWN BY: _____ DATE: 04-30-18 CHECKED BY: _____ ALL INFORMATION ILLUSTRATED IS THE PROPERTY OF CONXALL CORPORATION. UNAUTHORIZED DUPLICATION OR DISTRIBUTION OF THIS DOCUMENT IS PROHIBITED.	
ALL UNITS ARE IN FEET, INCHES, FRACTION OF INCHES AND DECIMALS.			 601 E. WILDWOOD VILLA PARK, IL 60181	
APPROVED BY: _____			TITLE: CONNECTOR KIT (2-3) #20 PIN CONTACTS MICRO-CON-X	
SCALE	SIZE	SHEET	CUSTOMER: STANDARD PRODUCT	
NTS	B	1 OF 1		
FILE:	DIRECTORY:	PART NUMBER:	REV	
16280-XPG-5XX	SLW	16280-XPG-5XX	A	