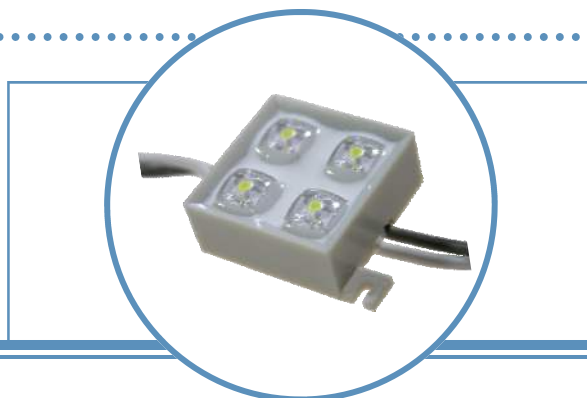


4 LED Module (20 modules / string)

OVM18F4x7 Series

| | | |
|-----------------------|-------------------|---------------------|
| 1 string | Length: 98 inches | Contains 20 modules |
| Unit Price = 1 module | | |

UL File E339817

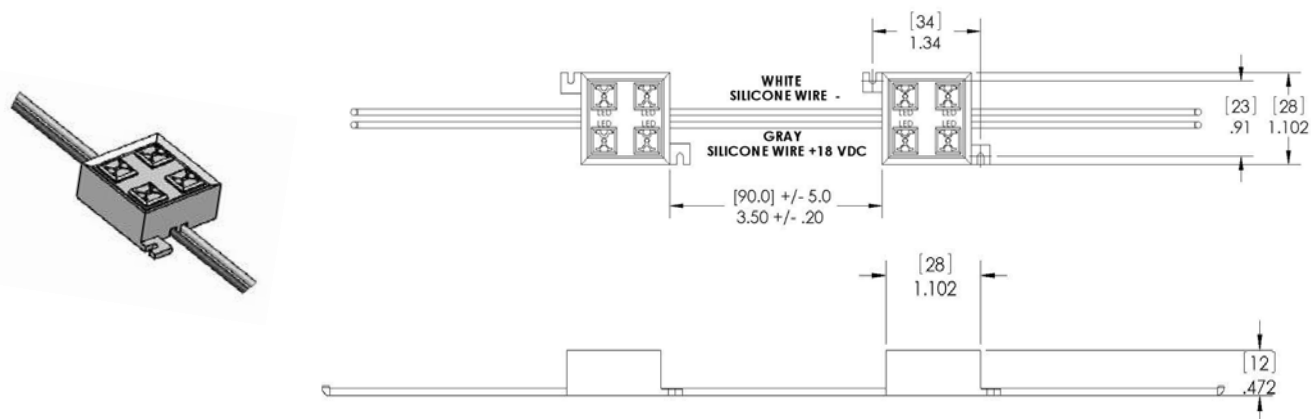


The **OVM18F4x7** is a versatile string of LED modules for surface illumination creating decorative, special effects or channel letter applications. Response time is fast for instantaneous flashing lights and low power consumption results in low power requirements from circuit power supply. Decorative applications include boats & motorcycles, boat houses & docks, residential under counter lighting & hidden ceiling lights, safety lights around steps and pools are just a few places to create an environment for fun and emotional moods.

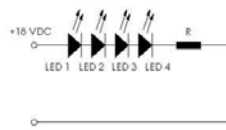
Applications

- Mood-setting decoration and landscape lighting
 - Special decorative interior/exterior lighting
 - Special effects stage lighting
- Channel Letters & Signs
- Large Area Back-lighting
- High-lighting pedestrian & walkway areas

| Part Number | Color | Beam Angle | Dominant Wavelength or CCT | Illumination (lux@0.5m) typ | IP Rating | Housing Material | Wire Gauge |
|-------------|--------|------------|----------------------------|-----------------------------|-----------|------------------|------------|
| OVM18F4R7 | Red | 120° | 623 +/- 3 nm | 24 | 67 | ABS | AWG 20 |
| OVM18F4Y7 | Yellow | | 590 +/- 3 nm | 22 | | | |
| OVM18F4G7 | Green | | 525 +/- 5 nm | 16 | | | |
| OVM18F4B7 | Blue | | 470 +/- 5 nm | 8 | | | |
| OVM18F4W7 | White | | 5000 to 7000 K | 20 | | | |



DIMENSION ARE IN INCHES [MM]
TOLERANCES ARE +/- .010 [.25]
UNLESS OTHERWISE SPECIFIED
MOUNT WITH #1 SCREW.



DO NOT LOOK DIRECTLY AT LED WITH UNSHIELDED EYES OR DAMAGE TO RETINA MAY OCCUR.

OPTEK reserves the right to make changes at any time in order to improve design and to supply the best product possible.

4 LED Module (20 modules / string)



Absolute Maximum Ratings (T_A = 25° C unless otherwise noted)

| | |
|---|--------------|
| Storage Temperature Range | -40 ~ +80 °C |
| Operating Temperature Range | -30 ~ +50 °C |
| Input Voltage | 20 V |
| Power Dissipation | 1.5 W |
| LED Junction Temperature | 125 °C |
| Electrostatic Discharge Classification (JEDEC-JESD22-A114F) | Class 1C |

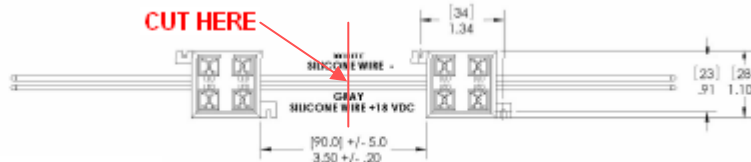
Notes:

1. Lead Solder time less than 10 seconds at temperature extreme.
2. No Heat sink is required if the string is operated at ambient temperature < 35°C. For long term performance the drive voltage between 12 V and 18 V is recommended. Please contact an Optek sales representative for more information on recommended drive conditions.

Electrical Characteristics / module (T_A = 25° C unless otherwise noted)

| SYMBOL | Notes | MIN | TYP | MAX | UNITS | CONDITIONS |
|-------------------|--------------------------------|------|------------|------|-------|------------------------|
| Power Consumption | Red/Yellow Green/Blue/White | | 0.8 0.4 | --- | W | V _{DC} = 18 V |
| V _{DC} | Input Voltage | 18 | | 20 | V | |
| Net Weight | | --- | 14 | --- | g | Per module |
| λ _D | Dominant Wavelength | --- | See chart | | | |
| 2 Θ½ | 50% Power Angle | ---- | 120 | ---- | deg | V _{DC} = 18 V |

If an entire string is not required for the application, clip wires at mid-span.

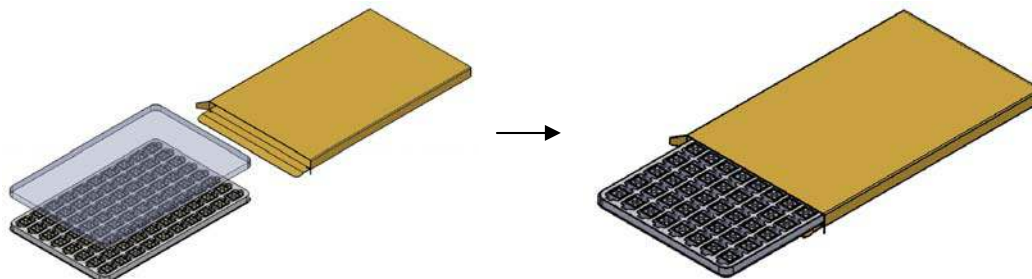


Modules can be secured onto a mounting surface with two #1 screws. Modules are waterproof and can be used outdoors. The installer is responsible for waterproofing the connection to the power source. The installer is also responsible for the use of an exterior approved power source.

Package Information:

1 tray contains 4 strings of 20 modules each.

Modules are packaged 80 per tray.



OPTEK reserves the right to make changes at any time in order to improve design and to supply the best product possible.