



2140 MHz Cavity Bandpass Filter With N-type Female connectors



ANATECH ELECTRONICS INC
RF & Microwave Filters & Products

Part Number: AB2140B1032-NF

Electrical specifications

Center Frequency: 2140 MHz
Passband: 2110-2170 MHz
Insertion loss @CF: ≤ 1.5 dB
Insertion loss @Band edges: ≤ 2.5 dB
Return loss in passband: 15 dB min
Rejection frequency on lowside of PB: 2080 MHz
Rejection on lowside of PB: 20 dB min
Rejection of frequency on highside of PB: 2220 MHz
Rejection on highside of PB: 20 dB min
Power Handling: 30W

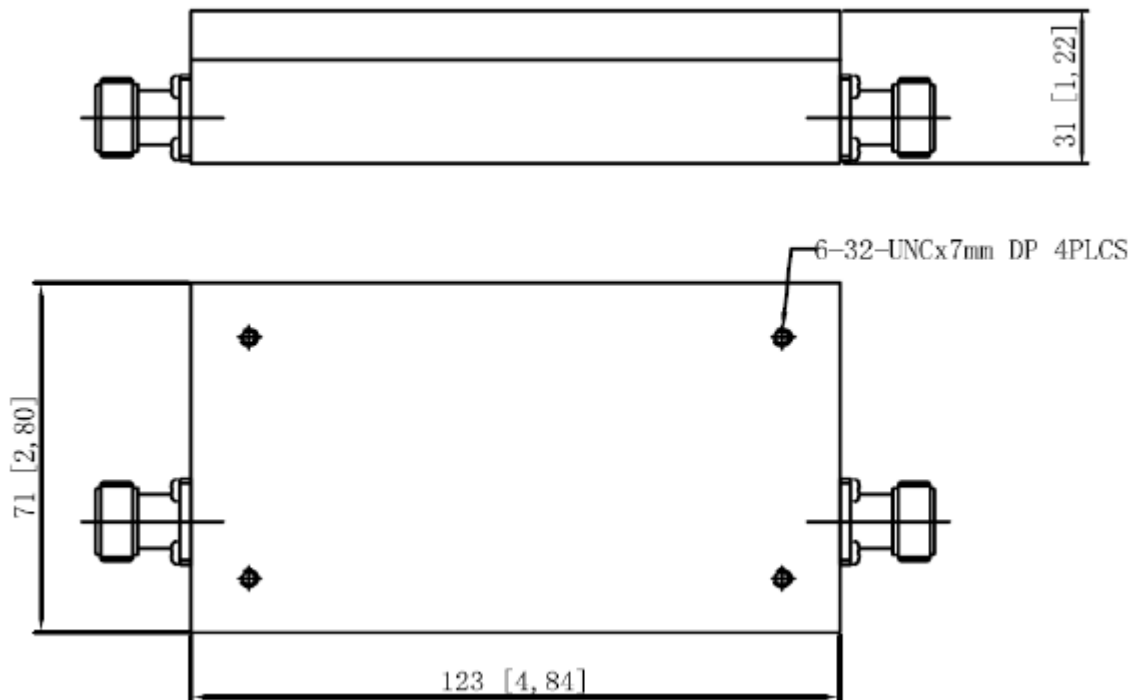
Mechanical

Mounting Method: Threaded Mounting Holes
Connector Type: N-type Female
Dimensions: 123 X 71 X 31 mm

Environmental

Operating Temperature: -45 to +85° C
Storage Temperature: -55 to +95° C
Shock: 20 G. 11ms
Vibration: 20 G. 5 to 200 Hz

Outline Drawing:



Tolerance: +/-0.01 inches [+/- 0.3mm]

Angles: +/- 1 Deg.

*Tolerance as shown unless otherwise specified in the datasheet electrical specification tables above.

*When max dimensions are called out the above tolerances do not apply as long as it is under the max call out.



2140 MHz Cavity Bandpass Filter With N-type Female connectors



ANATECH ELECTRONICS INC
RF & Microwave Filters & Products

Part Number: AB2140B1032-NF

Response Plot:

