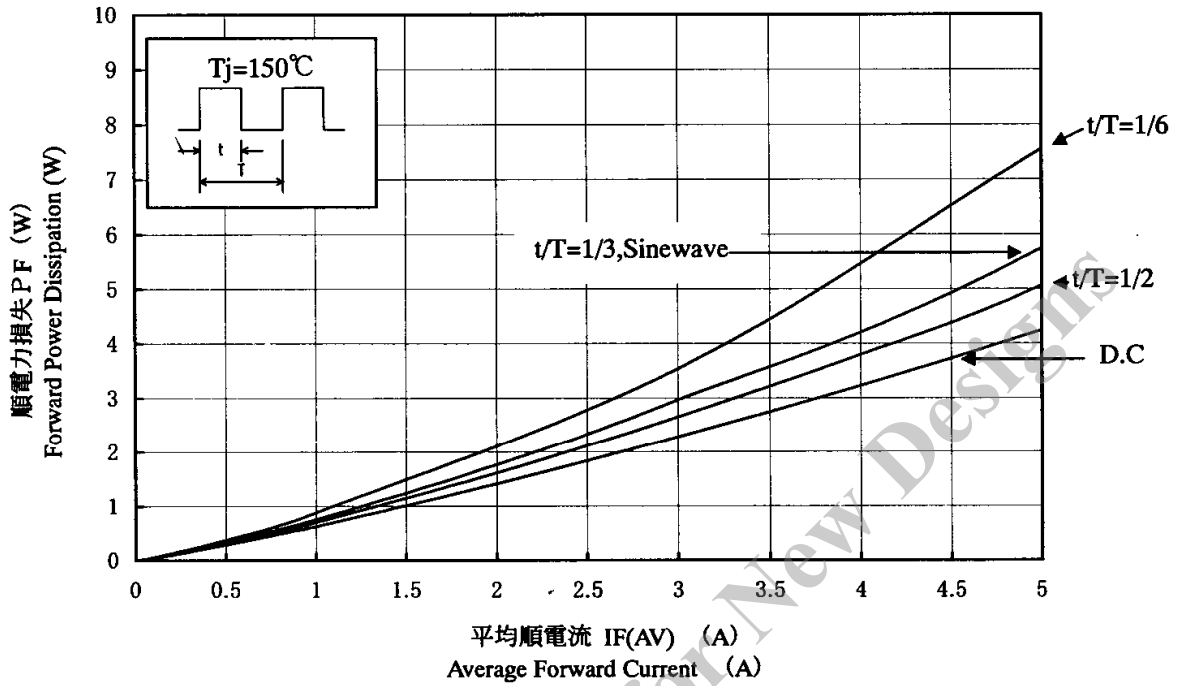




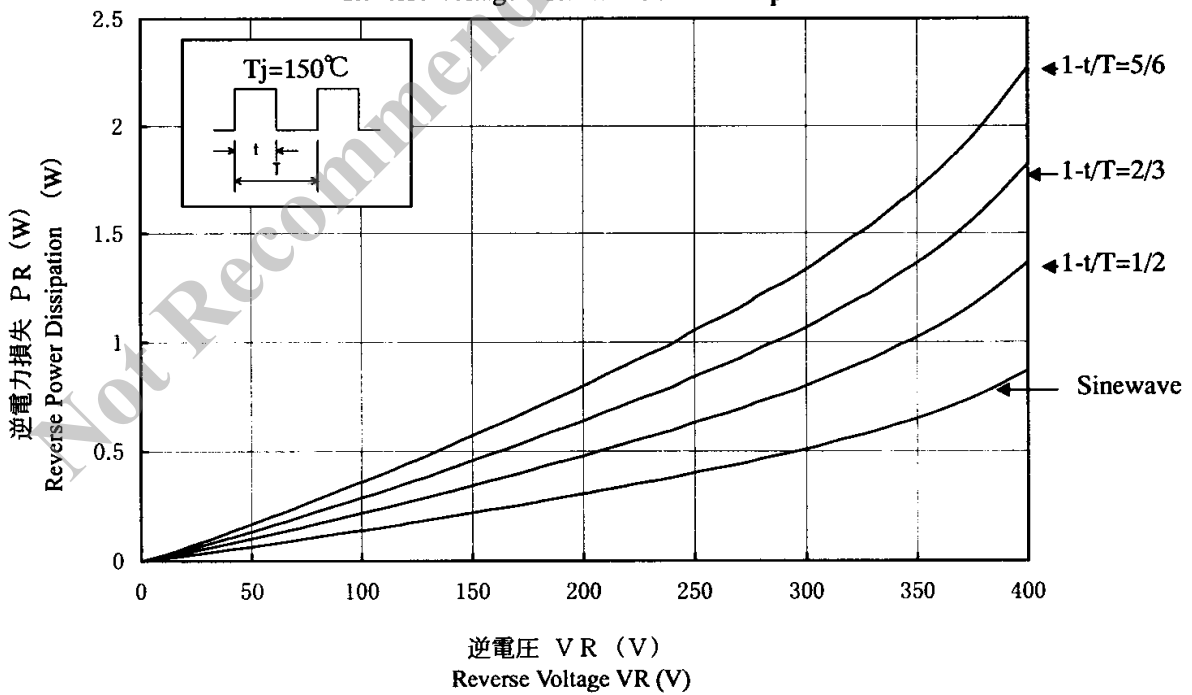
⊥ φ除勁

Characteristics

平均順電流—順電力損失  
Average Forward Current—Forward Power Dissipation



逆電壓—逆電力損失  
Reverse Voltage—Reverse Power Dissipation

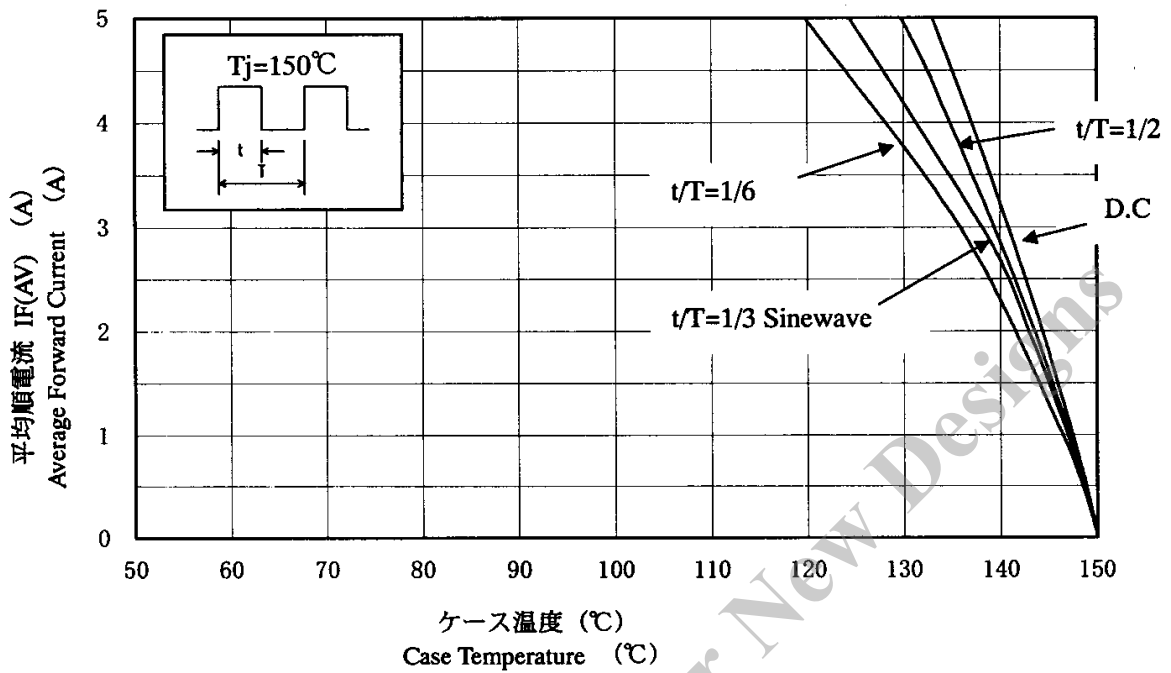


⚡ 降圧  
Derating

ケース温度—平均順電流

$T_C - I_{F(AV)}$

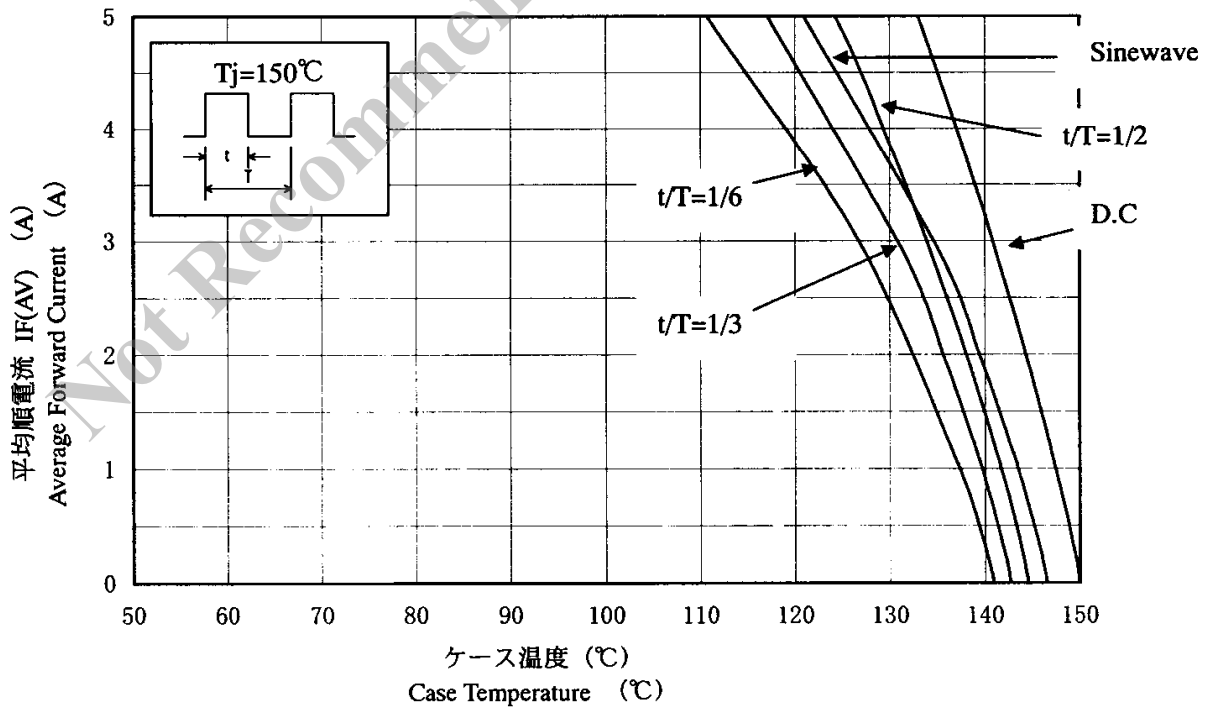
$V_R=0(V)$



ケース温度—平均順電流

$T_C - I_{F(AV)}$

$V_R=400(V)$

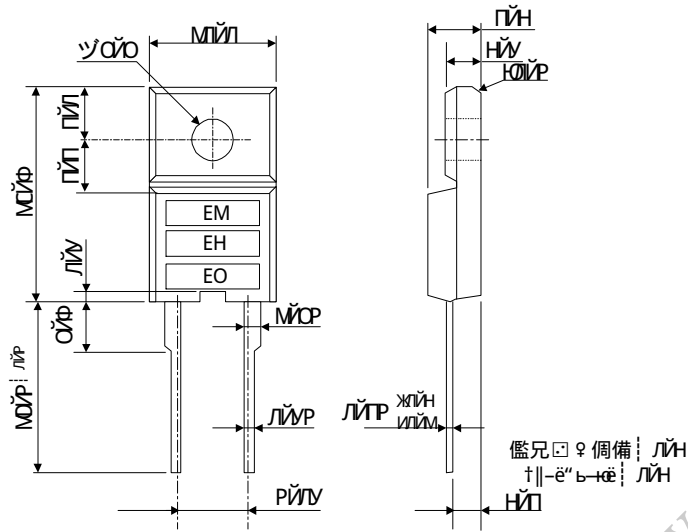


⊥ φ 鶴俠

Package information

⊥-⊥ 鶴俠(φ 勒嚙 雷 [X 帶尅

Package type, physical dimensions and material



雙 O(h) 眩  
Dimensions in 眩

⊥-⊥ 鶴壹

Appearance

固匪 √ (c) ㊦ " (c) 由 (c) 亿 垓 啞 □ ㊦ 德 垓 b ▶ ] ㊦ # (d)

The body shall be clean and shall not bear any stain, rust or flaw.

⊥ ⊥ 唳兄

Marking

唳 φ φ φ 场 Type Name	唳 φ φ φ φ φ φ φ φ φ φ 唳 Marking		
	⊥ 1 φ 唳场 Type Name	⊥ 2 φ 世勁 Polarity	⊥ 3 φ ら た つ 唳傑 Lot number
FMN-G14S	FMNG14	S	㊦ 1 唳囉 (h) 啞 (勒 垓 啞 傑 mA L 佞) 1st letter: Last digit of year ㊦ 2 唳囉 (h) 唳 φ 1 ㊦ 9 唳 ⊥ 1 ㊦ 9 2nd letter: Month φ From 1 to 9 for Jan. to Sep., 10 唳 ⊥ O(c) 11 唳 ⊥ N(c) 12 唳 ⊥ D O for Oct., N for Nov., D for Dec. ㊦ 3,4 唳囉 (h) 啄 3rd & 4th letter: Day 垓 (h) 4812 φ (2004 啞 8 唳 12 啄 勒 却) ex. 4812 φ (Aug. 12, 2004)