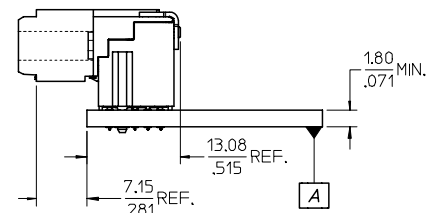
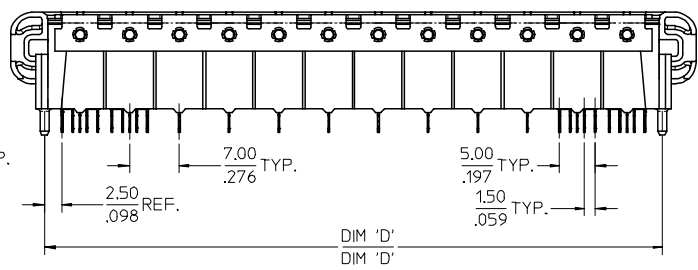
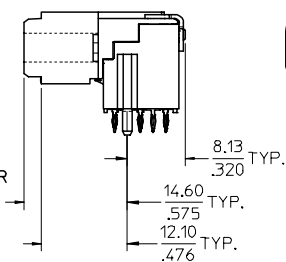
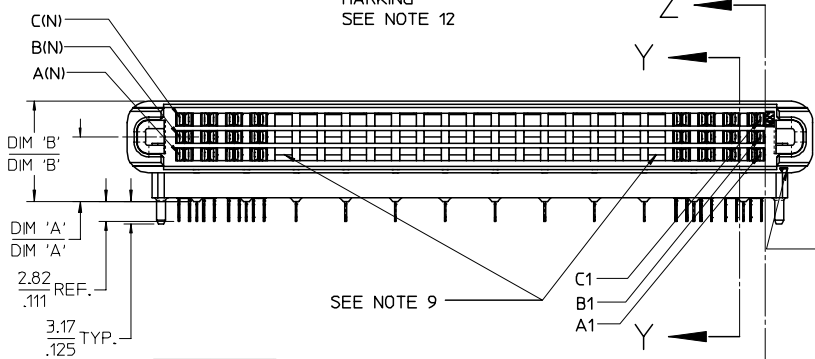
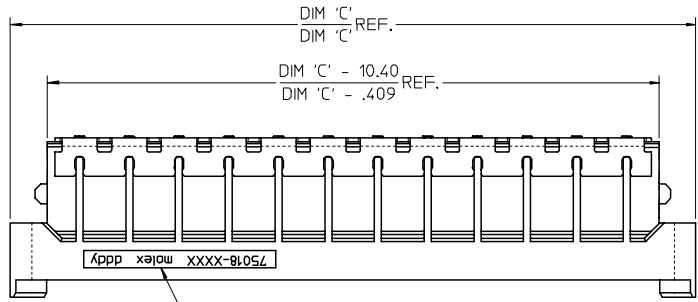


- NOTES:
- 1) MATERIALS:
HOUSING - LIQUID CRYSTAL POLYMER, UL94 V-0
WAFER DIELECTRIC - LIQUID CRYSTAL POLYMER, UL94 V-0
CONTACT - COPPER ALLOY
 - 2) FINISHES:
CONTACT INTERFACE
0.76 MICRON MIN. SELECT GOLD
1.27 MICRON MIN. NICKEL OVERALL
COMPLIANT INTERFACE
0.76 MICRON MIN. SELECT TIN OVER
1.27 MICRON MIN. NICKEL OVERALL
HOUSING
0.10 MICRON MAX. IMMERSION GOLD OVER
3.81 MICRON MIN. NICKEL OVER
3.81 MICRON MIN. COPPER OVERALL
 - 3) PRODUCT SPECIFICATION
THIS PART CONFORMS TO MOLEX SPECIFICATION PS-75018-001.
 - 4) PACKAGING SPECIFICATION
THIS PART TO BE PACKAGED PER SPECIFICATION PK-75020-010.
 - 5) APPLICATION SPECIFICATION
THIS PART TO BE APPLIED PER SPECIFICATION PS-75018-001.
APPLICATION TOOL AND INSTRUCTIONS PER AS-75018-001.
 - 6) MATING INFORMATION
THIS PART MATES WITH 75019-XXXX.
WILL MATE WITH MAXIMUM 1.27mm MIS-ALIGNMENT.
WILL MATE WITH MAXIMUM 0.5° MIS-ALIGNMENT.
 - 7) FOR CIRCUIT DESIGNATION SEE SHEET 3
 - 8) FOR PCB INFORMATION SEE SHEET 3
 - 9) CIRCUITS IN THIS ZONE HAVE BEEN OMITTED TO SIMPLIFY THE MODEL. ACTUAL PRODUCT IS FULLY LOADED WITH TERMINALS.
 - 10) APPLICATION TOOLING KEEP OUT AREA.
NO COMPONENTS ALLOWED IN THIS AREA.
 - 11) CONFORMS TO MOLEX COSMETIC SPECIFICATION PS-75005-002.
 - 12) MARKING: PART NUMBER, MOLEX LOGO, DATE CODE
 - 13) RECOMMENDED DRILL SIZE 0.66±0.03 TO YIELD FINISHED PLATED THROUGH HOLE OF 0.55±0.05



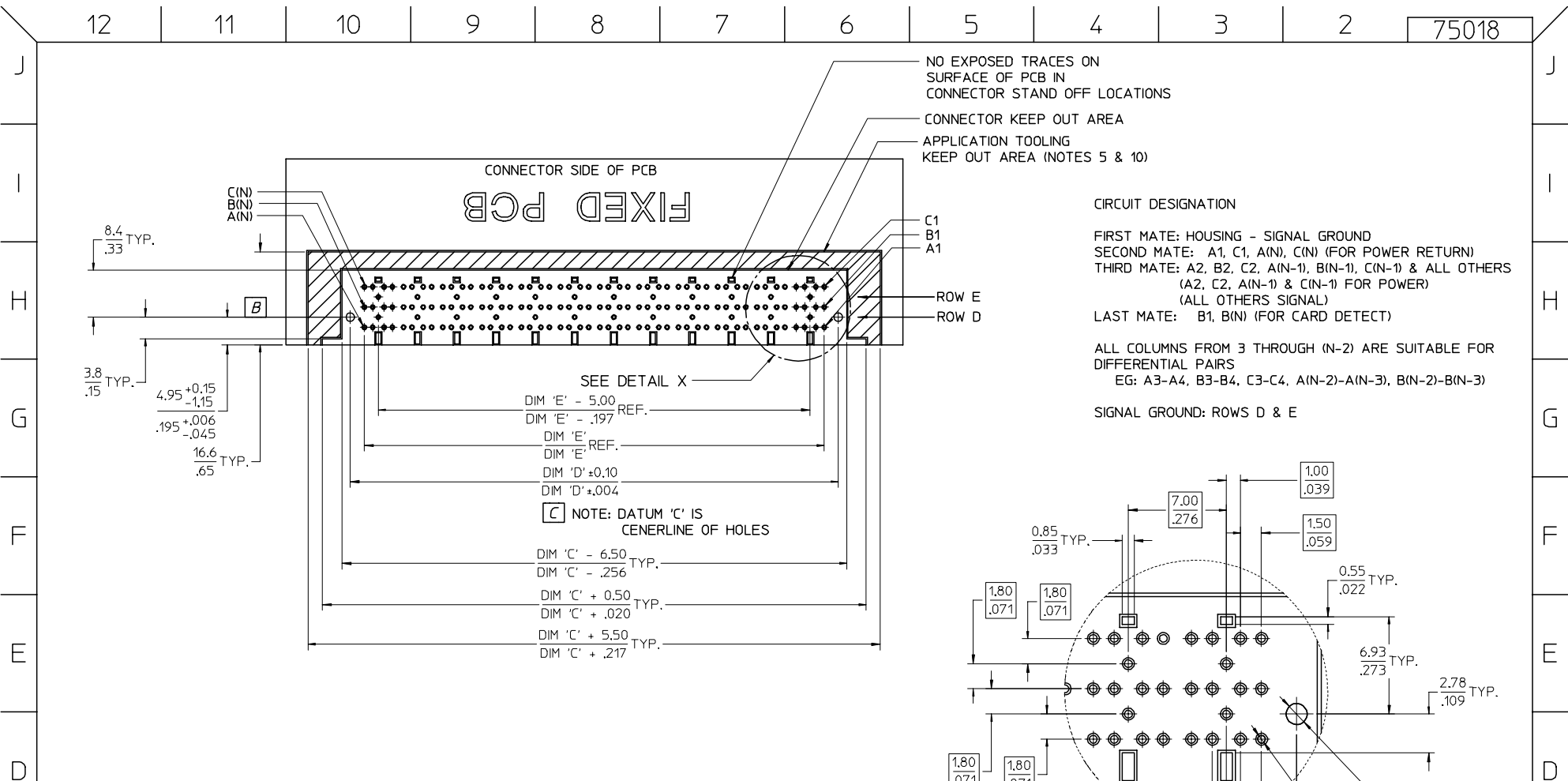
| | | | | | | | |
|---|---|---------------------------------------|---|-----------------------|---------------------|---|---------------------------|
| EC NO: UCP2004-1631 DRWN: KLANG 2004/04/27 CHKD: 2004/04/28 APPR: MBANAKIS2004/04/29 A2 | QUALITY SYMBOLS | GENERAL TOLERANCES (UNLESS SPECIFIED) | | SCALE 2:1 | DESIGN UNITS METRIC | THIRD ANGLE PROJECTION | REVISE ON CAD ONLY |
| | ▼ - 0 ◻ - 0 | mm | INCH | DIMENSION STYLE MM/IN | | TITLE | |
| | | 4 PLACES ± --- ± --- | 3 PLACES ± --- ± .005 | DRAWN BY LANG | DATE 03-OCT-29 | HIGH SPEED DOCKING FIXED CONNECTOR NO GROUND FINGER | |
| | | 2 PLACES ± 0.13 ± .01 | 1 PLACE ± 0.25 ± --- | CHECKED BY LANG | DATE 03-OCT-29 | MOLEX INCORPORATED | |
| | ANGULAR ±1/2° | | APPROVED BY BANAKIS | | DATE 03-OCT-29 | MATERIAL NO. SEE SHEET 2 | DOCUMENT NO. SD-75018-011 |
| | DRAFT WHERE APPLICABLE MUST REMAIN WITHIN DIMENSIONS | | THIS DRAWING CONTAINS INFORMATION THAT IS PROPRIETARY TO MOLEX INCORPORATED AND SHOULD NOT BE USED WITHOUT WRITTEN PERMISSION | | SHEET NO. 1 OF 3 | | |

J
I
H
G
F
E
D
C
B
A

J
I
H
G
F
E
D
C
B
A

| ITEM NUMBER | CIRCUIT SIZE | NO. OF COLUMNS 'N' | CENTERLINE DIMENSION 'A' mm(in) | O/A HEIGHT DIMENSION 'B' mm(in) | O/A LENGTH DIMENSION 'C' mm(in) | PEG TO PEG DIMENSION 'D' mm(in) | FIRST-LAST DIMENSION 'E' mm(in) |
|-------------|--------------|--------------------|---------------------------------|---------------------------------|---------------------------------|---------------------------------|---------------------------------|
| 75018-0021 | 144 | 48 | 4.74 (.187) | 9.78 (.385) | 96.50 (3.799) | 87.00 (3.425) | 82.00 (3.228) |
| 75018-0022 | 144 | 48 | 5.74 (.226) | 10.78 (.424) | 96.50 (3.799) | 87.00 (3.425) | 82.00 (3.228) |
| 75018-0023 | 144 | 48 | 8.74 (.344) | 13.78 (.543) | 96.50 (3.799) | 87.00 (3.425) | 82.00 (3.228) |
| 75018-0026 | 120 | 40 | 4.74 (.187) | 9.78 (.385) | 82.50 (3.248) | 73.00 (2.874) | 68.00 (2.677) |
| 75018-0024 | 108 | 36 | 4.74 (.187) | 9.78 (.385) | 75.50 (2.972) | 66.00 (2.598) | 61.00 (2.402) |
| 75018-0025 | 108 | 36 | 8.74 (.344) | 13.78 (.543) | 75.50 (2.972) | 66.00 (2.598) | 61.00 (2.402) |
| 75018-0027 | 108 | 36 | 5.74 (.226) | 10.78 (.424) | 75.50 (2.972) | 66.00 (2.598) | 61.00 (2.402) |

| | | | | | | | | |
|---|-------------------------------|--|-----------------------|---|---------------------|---|---------------------------|--|
| EC NO: UCP2004-1631 DRWN: KLANG 2004/04/27 CHKD: 2004/04/28 APPR: MBANAKIS2004/04/29 | QUALITY SYMBOLS ▽-0 □-0 | GENERAL TOLERANCES (UNLESS SPECIFIED) | | SCALE 1:1 | DESIGN UNITS METRIC | THIRD ANGLE PROJECTION | REVISE ON CAD ONLY | |
| | | mm | INCH | DIMENSION STYLE MM/IN | | TITLE | | |
| | | 4 PLACES ± --- ± --- | 3 PLACES ± --- ± .005 | DRAWN BY LANG | DATE 03-OCT-29 | HIGH SPEED DOCKING FIXED CONNECTOR NO GROUND FINGER MOLEX INCORPORATED | | |
| | | 2 PLACES ± 0.13 ± .01 | 1 PLACE ± 0.25 ± --- | CHECKED BY LANG | DATE 03-OCT-29 | | | |
| ANGULAR ±1/2° | | DRAFT WHERE APPLICABLE MUST REMAIN WITHIN DIMENSIONS | | APPROVED BY BANAKIS | DATE 03-OCT-29 | MATERIAL NO. SEE CHART | DOCUMENT NO. SD-75018-011 | |
| A2 | | | | THIS DRAWING CONTAINS INFORMATION THAT IS PROPRIETARY TO MOLEX INCORPORATED AND SHOULD NOT BE USED WITHOUT WRITTEN PERMISSION | | SHEET NO. 2 OF 3 | | |

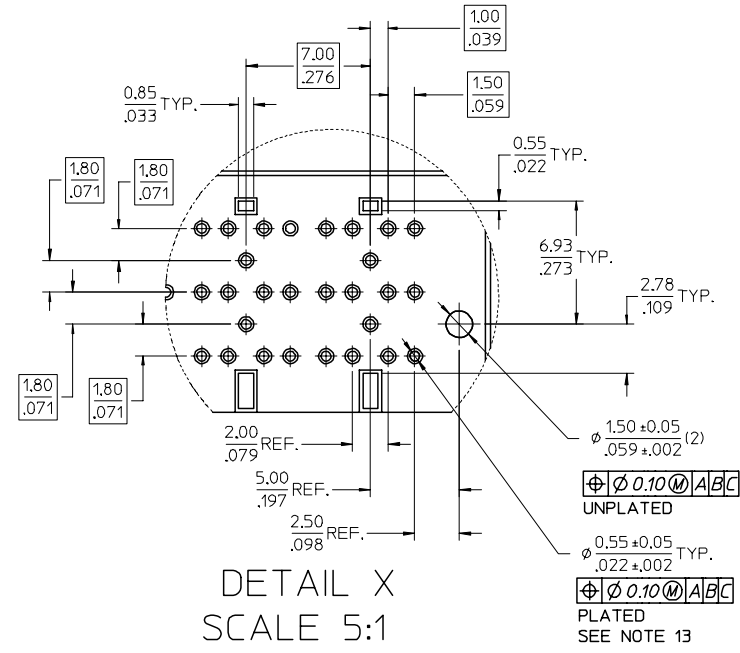


CIRCUIT DESIGNATION

FIRST MATE: HOUSING - SIGNAL GROUND
SECOND MATE: A1, C1, A(N), C(N) (FOR POWER RETURN)
THIRD MATE: A2, B2, C2, A(N-1), B(N-1), C(N-1) & ALL OTHERS (A2, C2, A(N-1) & C(N-1) FOR POWER) (ALL OTHERS SIGNAL)
LAST MATE: B1, B(N) (FOR CARD DETECT)

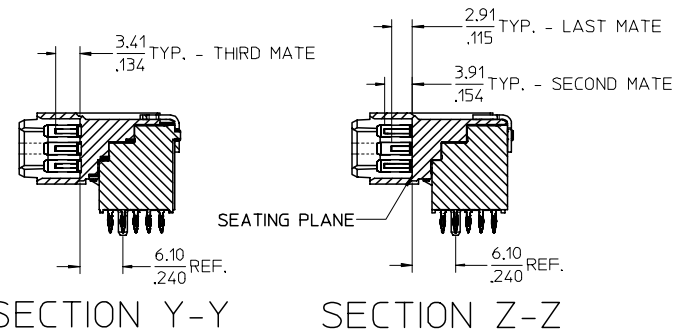
ALL COLUMNS FROM 3 THROUGH (N-2) ARE SUITABLE FOR DIFFERENTIAL PAIRS
EG: A3-A4, B3-B4, C3-C4, A(N-2)-A(N-3), B(N-2)-B(N-3)

SIGNAL GROUND: ROWS D & E



NOMINAL WIPE - FULL SEATED

FIRST MATE: 5.2mm
SECOND MATE: 2.7mm
THIRD MATE: 2.2mm
LAST MATE: 1.7mm



| | | | | | | |
|--|------------------------|--|------------------------------------|--------------------------------|---|--------------------|
| ELC NO: UCP2004-1631 DRWN: KLANG 2004/04/27 CHKD: 2004/04/28 APPR: MBANAKIS2004/04/29 | QUALITY SYMBOLS | GENERAL TOLERANCES (UNLESS SPECIFIED) | SCALE 2:1 | DESIGN UNITS METRIC | THIRD ANGLE PROJECTION | REVISE ON CAD ONLY |
| | ▽ - 0 ◻ - 0 | mm INCH 4 PLACES ± --- ± --- 3 PLACES ± --- ± .005 2 PLACES ± 0.13 ± .01 1 PLACE ± 0.25 ± --- ANGULAR ±1/2° | DIMENSION STYLE MM/IN | TITLE | HIGH SPEED DOCKING FIXED CONNECTOR NO GROUND FINGER | |
| | DRAFT WHERE APPLICABLE | MUST REMAIN WITHIN DIMENSIONS | DRAWN BY DATE LANG 03-OCT-29 | CHECKED BY DATE LANG 03-OCT-29 | MOLEX INCORPORATED | |
| | | | APPROVED BY DATE BANAKIS 03-OCT-29 | MATERIAL NO. SEE SHEET 2 | DOCUMENT NO. SD-75018-011 | SHEET NO. 3 OF 3 |