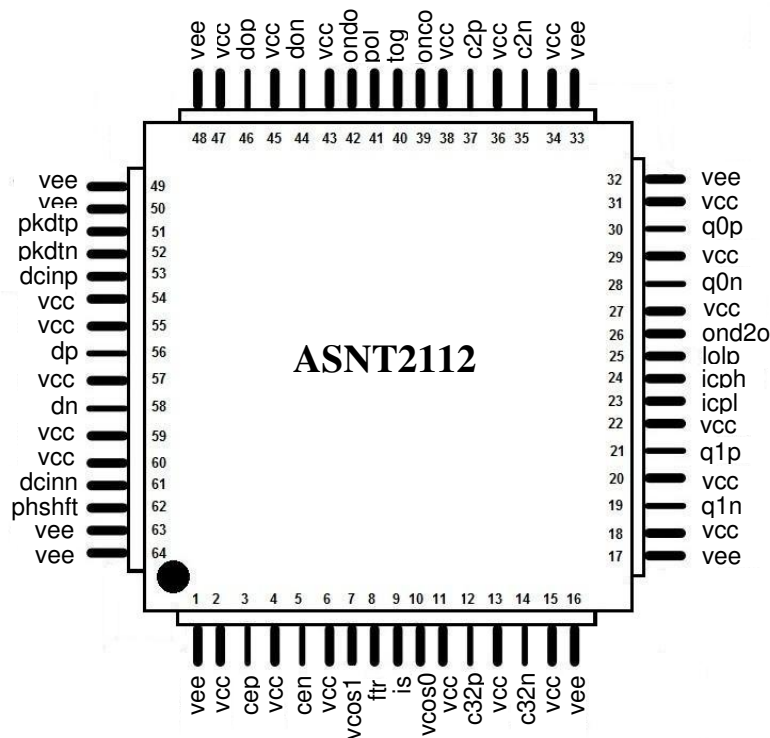




## ASNT2112-KMF Programmable CDR DMUX 1-to-2

- 1:2 demultiplexer (DMUX) with integrated full-rate CDR
- CDR range from 22.2GHz to 28.2GHz covered by 3 selectable VCOs
- Digital operational mode with DC to 28.2GHz external clock
- RZ and NRZ input data formats
- Adjustable time of data sampling point for optimum BER performance
- CML compliant differential input and output high-speed data and clock interfaces
- LVDS compliant input reference clock interface
- Full rate clock and retimed data output for 1:1 CDR operation
- Half rate data outputs with toggle synchronization functionality
- Signal inversion and muting capabilities in all output buffers
- Single +3.3V or -3.3V power supply
- Low power consumption of 1.6W at 25Gbps
- Industrial temperature range
- Custom CQFP 64-pin package





## DESCRIPTION

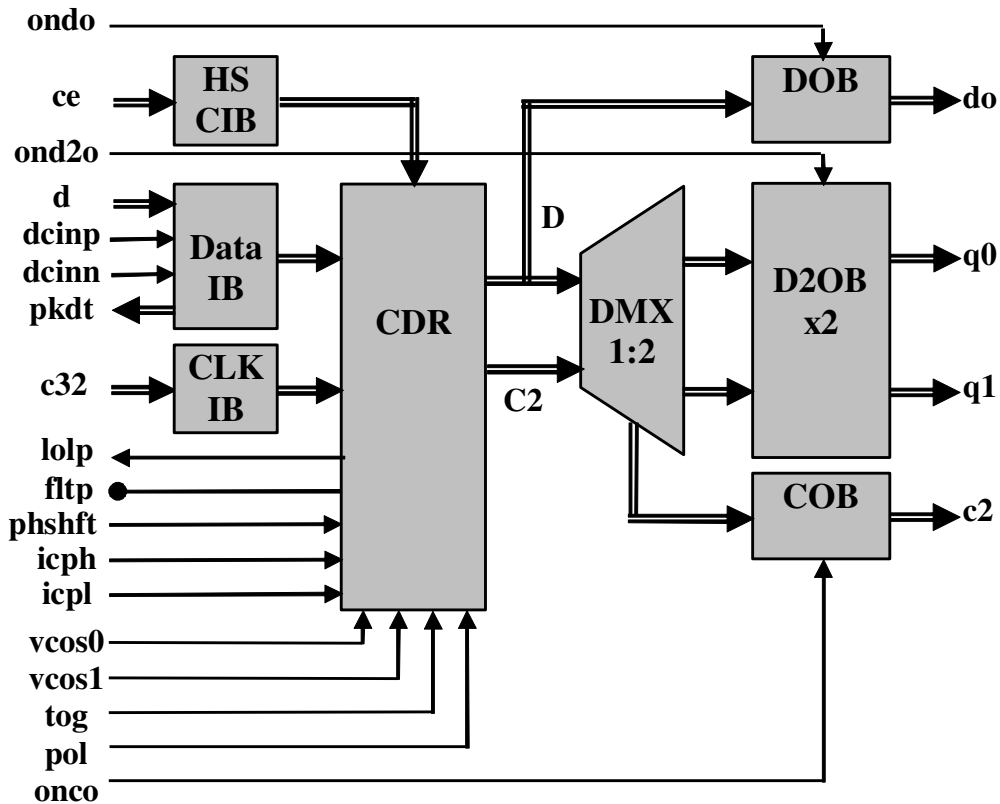


Fig. 1. Functional Block Diagram

ASNT2112-KMF is a 1:2 demultiplexer (DMUX) with full-rate integrated clock and data recovery (CDR). The IC shown in Fig. 1 can function in CDR mode covering a wide range of input data rates ( $f_{bit}$ ) by utilizing its three on-chip VCOs (voltage-controlled oscillators), or in a broadband digital mode. Selection of the desired working data rate and mode is accomplished through pins  $vcos0$  and  $vcos1$  (see Table 1). An external low speed system clock  $c32p/c32n$  running at 1/32 the frequency of the active VCO must be applied to the low-speed LVDS clock input buffer (CLK IB) in CDR mode. An external full-rate clock  $cep/cen$  must be applied to the high speed CML clock input buffer (HS CIB) for digital operation.

The main function of the chip is to convert RZ or NRZ input data signal  $dp/dn$  with a bit rate of  $f_{bit}$  accepted by CML buffer (Data IB) into 2 parallel NRZ data signals  $q0p/q0n$  and  $q1p/q1n$  running at bit rates of  $f_{bit}/2$  and delivered to the outputs by CML data output buffers (D2OBx2). The clock and data are recovered from the input data stream by CDR. The phase of the clock recovered by CDR can be adjusted externally through pin  $phsft$  to locate the optimum data sampling point to achieve the lowest system bit error rate (BER).

A full rate retimed NRZ data output signal  $dop/don$  is also available through the CML data output buffer (DOB) allowing the part to be used as a 1:1 CDR. Half rate clock  $c2p/c2n$  delivered through the CML clock output buffer (COB) has tight phase alignment to demultiplexed data output signals  $q0p/q0n$  and  $q1p/q1n$ .



Data IB can operate with differential or single-ended input signals. It includes tuning pins **dcinp/dcinn** for DC offset of the input signals in case of AC termination. When the buffer is operating with DC-terminated single ended input signal, a correct threshold voltage should be applied to the unused input pin. A peak detector is also included to provide means of demodulating AM components with the frequency up to a few hundred *KHz* carried by input data. The peak detector's output signal is delivered to differential port **pkdtp/pkdtn**.

All CML I/Os provide on chip *50Ohm* termination to **vcc** and may be used differentially, AC/DC coupled, single-ended, or in any combination (see also POWER SUPPLY CONFIGURATION). Output buffers **DOB**, **COB**, and **D2OBx2** can be individually disabled through pins **ondo**, **onco**, and **ond2o** to save power.

Utilizing pin **pol**, the deserializer can invert the polarity of the three output data signals. Pin **tog** flips the order of **q0p/q0n** and **q1p/q1n** signals thus simplifying the interface between the DMUX and a following ASIC. It also allows for synchronization of the bit order of two or more DMUXes working in parallel.

Loss of lock CMOS alarm signal **lolp** is generated by CDR to indicate its locking state. Off chip passive filter is required by CDR and should be connected to pin **ftt** (see CDR).

The deserializer is characterized for operation from 0°C to 125°C of junction temperature. The package temperature resistance is 15°C/W.

## Data IB

The Data Input Buffer (Data IB) can process input CML data signal **dp/dn** in either the RZ or NRZ format due to its high analog bandwidth. It provides on-chip single-ended termination of *50Ohm* to **vcc** for each input line. The buffer can also accept a single-ended signal to one of its input ports **dp** or **dn** with a threshold voltage applied to the unused pin in case of DC termination. In case of AC termination, tuning pins **dcinn** or **dcinp** allow for the data common mode adjustment. The tuning pins have *1KOhm* terminations to **vcc** and allow the user to change the slicing level before the data is sampled by the recovered clock. Tuning voltages from **vcc** to **vee** deliver *150mV* of DC voltage shift.

Also included in Data IB is an input signal peak detector that delivers its response through the output differential signal **pkdtp/pkdtn**. The detector can demodulate AM component(s) in the frequency range of up to a few hundred *kHz* carried by the input data. The detector's output impedance is *4KOhm* single ended to **vcc**.

## HS CIB

The High-Speed Clock Input Buffer (HS CIB) can process either differential or single-ended external CML clock signals **cep/cen**. In the single-ended mode, the clock is applied to one of the pins with a threshold voltage applied to the unused pin. The buffer utilizes on-chip single-ended termination of *50Ohm* to **vcc** for each input line.



## CLK IB

The Clock Input Buffer (CLK IB) consists of a proprietary universal input buffer (UIB) that exceeds the LVDS standards IEEE Std. 1596.3-1996 and ANSI/TIA/EIA-644-1995. UIB is designed to accept differential signals with the speed up to 1Gb/s, DC common mode voltage variation between  $v_{cc}$  and  $v_{ee}$ , and AC common mode noise with a frequency up to 5MHz and voltage levels ranging from 0 to 2.4V. It can also receive a DC-terminated single-ended signal with a threshold voltage between  $v_{cc}$  and  $v_{ee}$  applied to the unused pin. The input termination impedance is set to 100Ohm differential.

## CDR

The Clock and Data Recovery Block (CDR) contains both a phase and frequency acquisition loop. The frequency loop works in concert with low-speed clock  $c32p/c32n$  while the phase loop utilizes data signal  $dp/dn$ . The CDR requires a single off-chip filter shown in Fig. 2 to be connected to the pin  $ft_r$ .

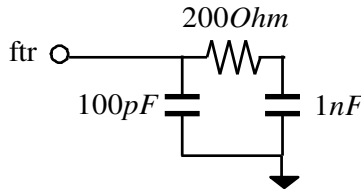


Fig. 2. External Loop Filter

The main function of CDR is to frequency-lock the selected on-chip VCO to the input data signal (clock recovery) while phase-aligning it to latch in the incoming data with minimal error (data recovery). By default, CDR aligns the recovered clock's working edge in the middle of the incoming data bits. DC voltage from  $v_{ee}$  to  $v_{cc}$  applied to in  $phshft$  can be utilized to shift this position from one edge of the data bit to the other in order to locate the optimum sampling point that provides the lowest system BER. The recovered clock is divided down in frequency by two (C2) and utilized by DMX 1:2 for demultiplexation of the recovered data.

By utilizing the 2.5V CMOS control pins  $vcos0$  and  $vcos1$ , the desired working frequency of CDR can be selected in accordance with Table 1 below.

Table 1. CDR Mode Selection

$vcos0$	$vcos1$	VCO Center Frequency (GHz)
"0" (0V)	"0" (0V)	23.0
"0" (0V)	"1" (2.5V)	25.0
"1" (2.5V)	"0" (0V)	27.0
"1" (2.5V)	"1" (2.5V)	Digital Mode, default state

The loop gain can be adjusted by two 2.5V CMOS control pins  $icph$  and  $icpl$  that control the charge pump current as shown in Table 2.



Table 2. Charge Pump Current Control

icph	icpl	Charge Pump current, mA
"0" (0V)	"0" (0V)	$I_{max}$
"0" (0V)	"1" (2.5V)	$I_{max}-0.04$
"1" (2.5V)	"0" (0V)	$I_{max}-0.27$
"1" (2.5V)	"1" (2.5V)	$I_{max}-0.31$

The lock detect circuitry signals an alarm through 2.5V CMOS signal *lolp* when a frequency difference exists between applied system reference clock *c32p/c32n* and recovered full rate clock divided-by-32 that is greater than  $\pm 1000ppm$ .

Another feature included in CDR is the ability to simultaneously invert the polarity of all three data outputs through 2.5V CMOS input pin *pol* (*pol* = "1" (default): direct; *pol* = "0": inverted). The order of the half-rate output data streams can be inverted by using 2.5V CMOS input pin *tog*, which provides means to synchronize two adjacent DMUXes operating in parallel. The synchronization process may be accomplished by the "blind" toggling in one of the chips and leaving the task of recognizing the "right" position to downstream components (e.g. FEC chip).

## DMX1:2

The 1 to 2 Demultiplexer (DMX1:2) latches in the retimed data stream *D* from CDR on both edges of the half rate clock signal *C2*. The high speed data signal is subsequently demultiplexed into two half rate NRZ data signals and delivered to *D2OBx2* in parallel fashion as 2-bit wide words with the order defined by *tog* signal.

## DOB

The Data Output Buffer (DOB) receives the full rate retimed serial data stream *D* from CDR and converts it into the CML output signal *dop/don*. This CML buffer requires  $50\Omega$  external termination resistors connected between *vcc* and each output. The buffer can be enabled or disabled by the external 2.5V CMOS control signal *ondo* (*ondo* = "1" (default): enabled; *ondo* = "0": disabled).

## D2OBx2

The Half Rate Data Output Buffer (D2OBx2) receives two half rate data signals from DMX1:2 and converts them into CML output signals *q0p/q0n* and *q1p/q1n*. The buffer requires  $50\Omega$  external termination resistors connected between *vcc* and each output. The buffer can be enabled or disabled by external 2.5V CMOS control signal *ond2o* (*ond2o* = "1" (default): enabled; *ond2o* = "0": disabled).

## COB

The Clock Output Buffer (COB) receives a half rate clock signal from DMX1:2 and converts it into CML output signal *c2p/c2n*. The buffer requires  $50\Omega$  external termination resistors connected between *vcc* and each output. The buffer can be enabled or disabled by external 2.5V CMOS control signal *onco* (*onco* = "1" (default): enabled; *onco* = "0": disabled). The negative edge of *c2p* signal is aligned to the half rate output data crossing points.



## POWER SUPPLY CONFIGURATION

The ASNT2112-KMF can operate with either a negative supply ( $v_{cc} = 0.0V = \text{ground}$ , and  $v_{ee} = -3.3V$ ), or a positive supply ( $v_{cc} = +3.3V$  and  $v_{ee} = 0.0V = \text{ground}$ ). In case of the positive supply, all I/Os need AC termination when connected to any devices with  $50\Omega$  termination to ground. Different PCB layouts will be needed for each different power supply combination.

**All the characteristics detailed below assume  $v_{cc} = 3.3V$  and  $v_{ee} = 0V$  (external ground).**

## ABSOLUTE MAXIMUM RATINGS

Caution: Exceeding the absolute maximum ratings shown in Table 3 may cause damage to this product and/or lead to reduced reliability. Functional performance is specified over the recommended operating conditions for power supply and temperature only. AC and DC device characteristics at or beyond the absolute maximum ratings are not assumed or implied. All min and max voltage limits are referenced to ground (assumed  $v_{ee}$ ).

Table 3. Absolute Maximum Ratings

Parameter	Min	Max	Units
Supply Voltage ( $v_{cc}$ )		+3.8	V
Power Consumption		1.6	W
Input Voltage Swing (SE)		1.0	V
Case Temperature		+90	$^{\circ}C$
Storage Temperature	-40	+100	$^{\circ}C$
Operational Humidity	10	98	%
Storage Humidity	10	98	%

## TERMINAL FUNCTIONS

Supply and Termination Voltages		
Name	Description	Pin Number
vcc	Positive power supply (+3.3V)	2, 4, 6, 11, 13, 15, 18, 20, 22, 27, 29, 31, 34, 36, 38, 43, 45, 47, 54, 55, 57, 59, 60
vee	Negative power supply (GND or 0V)	1, 16, 17, 32, 33, 48, 49, 50, 63, 64



TERMINAL			DESCRIPTION		
Name	No.	Type			
<b>High-Speed I/Os</b>					
cep	3	Input	CML differential full rate clock inputs with internal SE 50 $\Omega$ termination to VCC		
cen	5				
q1p	21	Output	CML differential half rate data outputs. Require external SE 50 $\Omega$ termination to VCC		
q1n	19				
q0p	30				
q0n	28				
c2p	37	Output	CML differential half rate clock outputs. Require external SE 50 $\Omega$ termination to VCC		
c2n	35				
dop	46	Output	CML differential full rate data outputs. Require external SE 50 $\Omega$ termination to VCC		
don	44				
dp	56	Input	CML differential data inputs with internal SE 50 $\Omega$ termination to VCC		
dn	58				
<b>Low-Speed I/Os</b>					
c32p	12	Input	LVDS clock input with internal differential 100 $\Omega$ termination		
c32n	14				
pkdtp	51	Output	Peak detector outputs		
pkdtn	52				
<b>Controls</b>					
vcos1	7	LS In., 2.5V CMOS	CDR operational mode selection, see Table 1		
vcos0	10				
is	9			VCO current control (high, default: higher current; low: lower current)	
icpl	23			Charge pump current control, see Table 2	
icph	24				
ond2o	26			D2OBx2 control (high, default: buffer is on; low: buffer is disabled)	
onco	39			COB control (high, default: buffer is on; low: buffer is disabled)	
tog	40			Inversion of output data signals order (default: high)	
pol	41			Data output signal polarity (high, default: inverted data outputs; low: direct data outputs)	
ondo	42			DOB control (high, default: buffer is on; low: buffer is disabled)	
lolp	25			LS out, 2.5V CMOS	CDR lock indicator (high: no lock; low: locked)
dcinp	53			LS IN	Input data common mode voltage adjustment
dcinn	61				
phshft	62	LS IN	CDR sampling point adjustment		
fttr	8	I/O	External CDR filter connection		



## ELECTRICAL CHARACTERISTICS

PARAMETER	MIN	TYP	MAX	UNIT	COMMENTS
<b>General Parameters</b>					
vcc	+3.0	+3.3	+3.6	V	±9%
vee		0.0		V	
I <sub>vcc</sub>		490		mA	All functions "ON"
Power Consumption		1.6		W	
Junction Temperature	-25	50	125	°C	
<b>HS Input Data (dp/dn)</b>					
Data Rate	DC		28.2	Gbps	RZ or NRZ
Swing p-p (Diff or SE)	0.05		0.6	V	
CM Voltage Level	vcc-0.8		vcc	V	
<b>LS Input Reference Clock (c32p/c32n)</b>					
Frequency	693.75		881.25	MHz	
Swing p-p (Diff or SE)	0.06		0.8	V	
CM Voltage Level	vee		vcc	V	
Duty Cycle	40	50	60	%	
<b>HS Output Full Rate Data (dop/don)</b>					
Data Rate	DC		28.2	Gbps	NRZ
Logic "1" level		vcc		V	
Logic "0" level		vcc -0.4		V	
Jitter		8		ps	p-p @ 25.6Gbps
<b>HS Output Half Rate Data (q0p/q0n, q1p/q1n)</b>					
Data Rate	DC		14.1	Gbps	NRZ
Logic "1" level		vcc		V	
Logic "0" level		vcc -0.4		V	
Jitter		7		ps	p-p @ 12.8Gbps
<b>HS Output Half Rate Clock (CDR Mode) (c2p/c2n)</b>					
Data Rate	11.1		14.1	GHz	
Logic "1" level		vcc		V	
Logic "0" level		vcc -0.4		V	
Jitter		5		ps	p-p @ 12.8GHz
<b>Input Data Common Mode Control (dcinp/dcinn)</b>					
Input DC Voltage	vee		vcc	V	
Input Data Voltage Shift	0		-150	mV	Referenced to vcc
<b>Output of Peak Detector (pkdtp/pkdtn)</b>					
Swing p-p (Diff)	-1		1	V	Over full input range
CM Voltage Level		vcc-1.0		V	
<b>Data Sampling Point Adjustment (phshft)</b>					
Input DC Voltage	vcc-1.0	NC	vcc	V	NC=Not Connected
Phase Shift	-15	0	+15	ps	
Shift Stability	-2		2	ps	From 0°C to 125°C
Bandwidth	0.0		100	MHz	





CMOS Control Inputs/Outputs			
Logic "1" level	2.1	2.5	V
Logic "0" level	vee+0.4		V
Timing Parameters			
c2p/c2n to q0p/q0n & q1p/q1n delay variation	2	ps	Over the full temperature range

## PACKAGE INFORMATION

The chip die is housed in a custom 64-pin CQFP package. The dimensioned drawings are shown in Fig. 3.

### 64-PIN KMF Package

All Dimensions are in millimeters

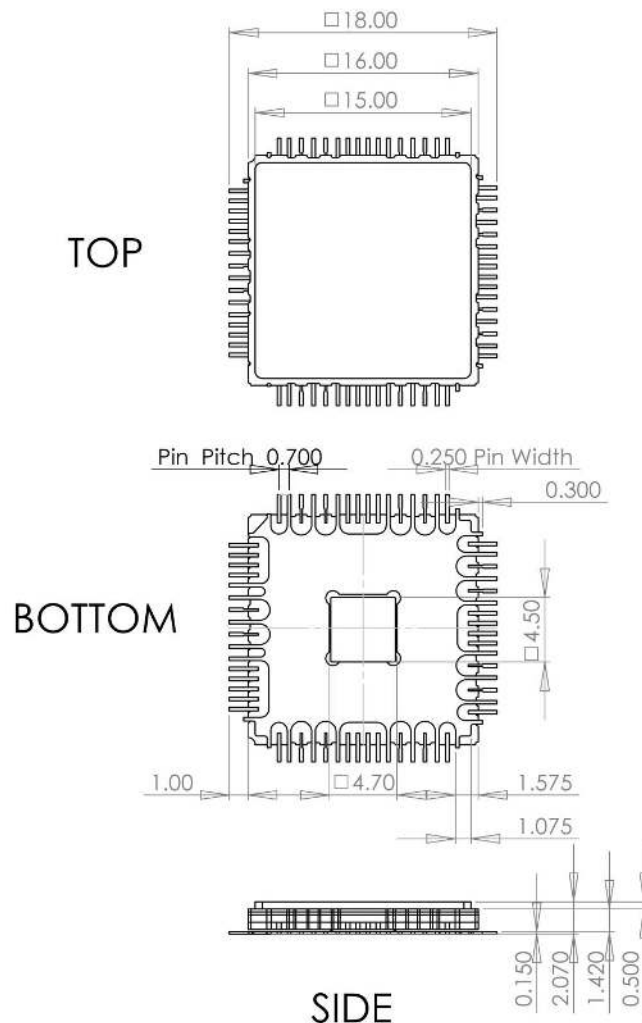


Fig. 3. Package Drawing



The package's leads will be trimmed to a length of 1.0mm. After trimming, the package's leads will be further processed as follows:

1. The lead's gold plating will be removed per the following sections of J-STD-001D:
  - 3.9.1 Solderability
  - 3.2.2 Solder Purity Maintenance
  - 3.9.2 Solderability Maintenance
  - 3.9.3 Gold Removal
2. The leads will be tinned with Sn63Pb37 solder

The package provides a center heat slug located on its back side to be used for heat dissipation. ADSANTEC recommends for this section to be soldered to the VCC plain, which is ground for a negative supply, or power for a positive supply.

The part's identification label is ASNT2112-KMF. The first 8 characters of the name before the dash identify the bare die including general circuit family, fabrication technology, specific circuit type, and part version while the 3 characters after the dash represent the package's manufacturer, type, and pin out count.

This device complies with the Restriction of Hazardous Substances (RoHS) per 2011/65/EU for all ten substances.



## REVISION HISTORY

Revision	Date	Changes
2.4.2	05-2020	Updated Package Information
2.3.2	10-2019	Corrected VCO central frequencies
2.2.2	07-2019	Updated Letterhead
2.2.1	05-2015	Revised description Corrected Absolute Maximum Ratings section Revised packaging information section Corrected format
2.1.1	10-2012	Added supply current Corrected format
2.0	05-2012	Corrected description Added pin out drawing Added loop filter schematic Added description of is, icph, icpl pins
1.6	06-2010	Added additional packaging information Changed package mechanical drawing
1.5	04-2010	Added case temperature
1.4	02-2010	Added absolute maximums rating table Replaced TBDs with values Added RoHS compliancy Added revision history table Revised VCO table Added packaging diagram
1.3	12-2009	Adjusted block diagram Updated center frequencies in VCO table Updated external filter pin assignments Revised packaging information section
1.2	04-2009	Updated center frequencies in VCO table Updated power consumption value
1.1	02-2009	Initial release