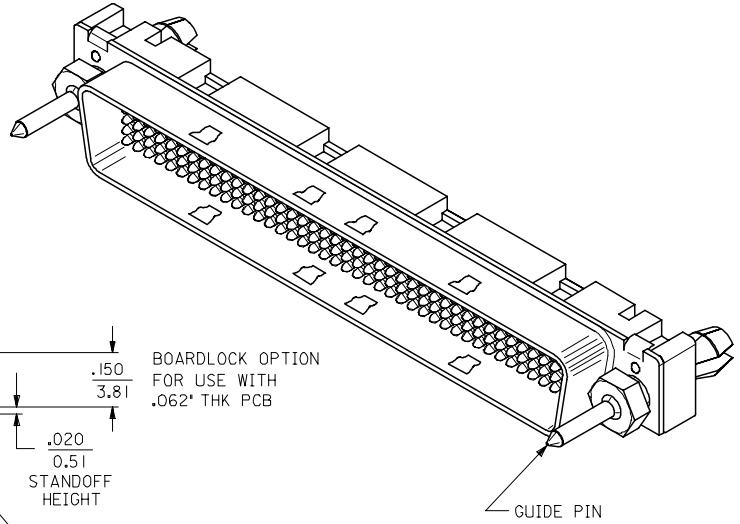
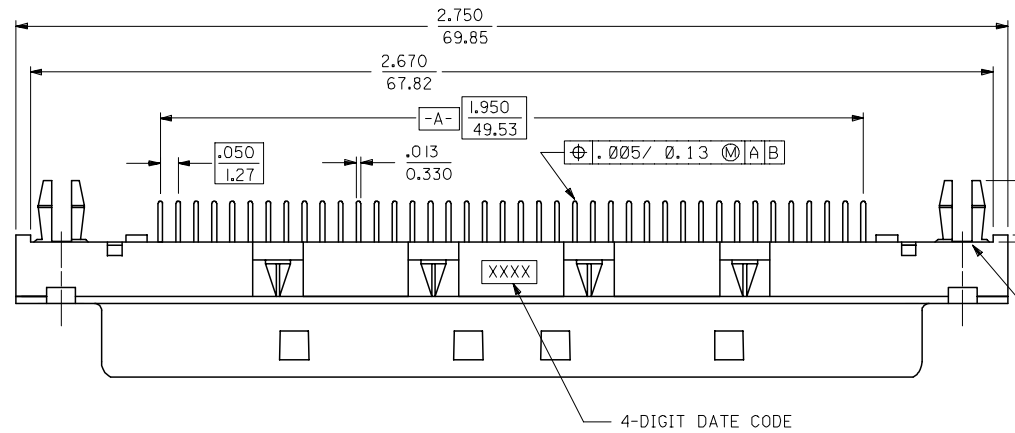


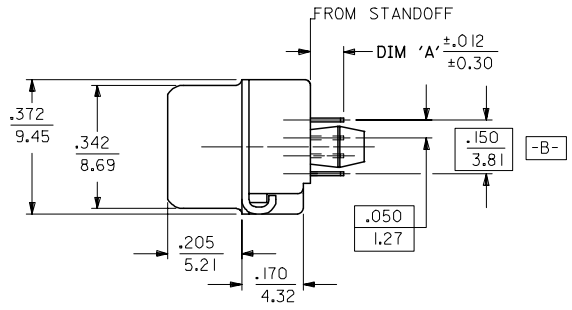
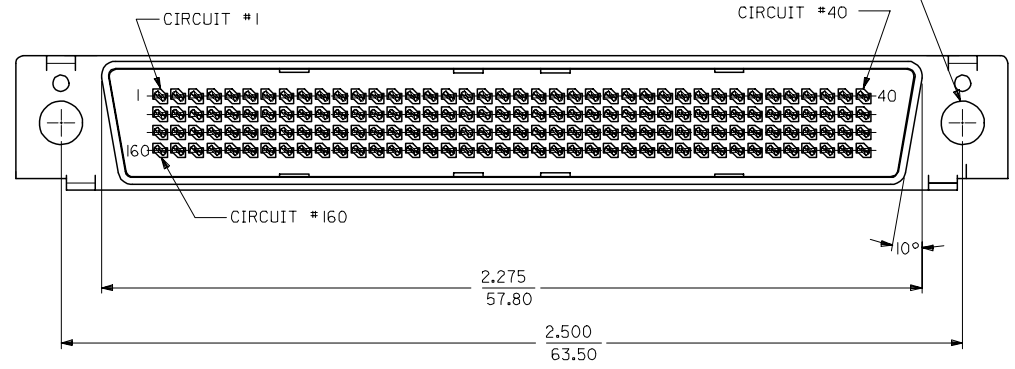
13 12 11 10 9 8 7 6 5 4 3 2 1

J I H G F E D C B A



NOTE: WHEN USING BOARDLOCK OPTION, THIS HARDWARE IS REQUIRED FOR EFFECTIVE ELECTRICAL GROUNDING. SEE SDA-71628-\*\*\*\*.

M3 INTERNALLY THREADED INSERT RETAINED IN HOUSING. BOARDLOCK OPTION SHOWN.



2	G
1	G
SHT	REV

ENG. NUMBER	ITEM NUMBER	DIM 'A'	OPTIONS	
			M3 THREADED INSERT	BOARDLOCK
A-71624-1000	051-25-1030	.092/ 2.34	YES	NO
A-71624-1001	71624-1001	.092/ 2.34	YES	YES
A-71624-1002	051-25-1032	.092/ 2.34	NO	NO
A-71624-1003	71624-1003	.125/ 3.18	YES	NO
A-71624-1013	71624-1013	.177/ 4.50	YES	NO
A-71624-1004	71624-1004	.125/ 3.18	YES	YES
A-71624-1005	71624-1005	.125/ 3.18	NO	NO

MODIFY PACKAGING  
 EC NO: UCP2007-0515  
 2006/09/18  
 DRW:MSI:BARRA  
 CHKD:DMORGAN  
 2006/09/26  
 APPR:SMILLER  
 2006/09/27

QUALITY SYMBOLS  
 ▽=0  
 ▽=0

GENERAL TOLERANCES (UNLESS SPECIFIED)

	mm	INCH
4 PLACES	±---	±---
3 PLACES	±---	±---
2 PLACES	±---	±---
1 PLACE	±---	±---

ANGULAR ±1/2°

DRAFT WHERE APPLICABLE MUST REMAIN WITHIN DIMENSIONS

DIMENSION STYLE  
 IN/MM

SCALE  
 4:1

DESIGN UNITS  
 INCH

THIRD ANGLE PROJECTION

DRAWN BY  
 MOS

DATE  
 1993/01/08

CHECKED BY  
 BIXLER

DATE  
 1993/01/08

APPROVED BY  
 CAB

DATE  
 1993/01/08

MATERIAL NO.  
 SEE TABLE

DOCUMENT NO.  
 SDA-71624-\*\*\*\*

.050 PITCH LFH 160 CKT  
 VERTICAL I/O MALE  
 SALES ASSEMBLY

MOLEX INCORPORATED

SHEET NO.  
 1 OF 2

THIS DRAWING CONTAINS INFORMATION THAT IS PROPRIETARY TO MOLEX INCORPORATED AND SHOULD NOT BE USED WITHOUT WRITTEN PERMISSION

12 11 10 9 8 7 6 5 4 3 2 1

NOTES:

1) MATERIALS:

HOUSING: GLASS FILLED LCP (LIQUID CRYSTAL POLYMER), UL 94V-0, BLACK.  
 MOLDED STICK: GLASS FILLED LCP (LIQUID CRYSTAL POLYMER), UL94V-0, BLACK.  
 MALE CONTACT: PHOS. BRONZE .012±.0005 THICK.  
 OUTER SHELL: LOW CARBON STEEL.  
 THREADED BOARD LOCK: BRASS

2) PLATING :

TERMINAL: .000030/ 0.00076 MINIMUM GOLD IN SELECTIVE AREA;  
 .000100/ 0.00254 MINIMUM TIN IN SELECTIVE AREA;  
 OVER NICKEL UNDERPLATE OVERALL.

OUTER SHELL: .000100/ 0.00254 MINIMUM BRIGHT NICKEL  
 OVER COPPER FLASH OPTIONAL.

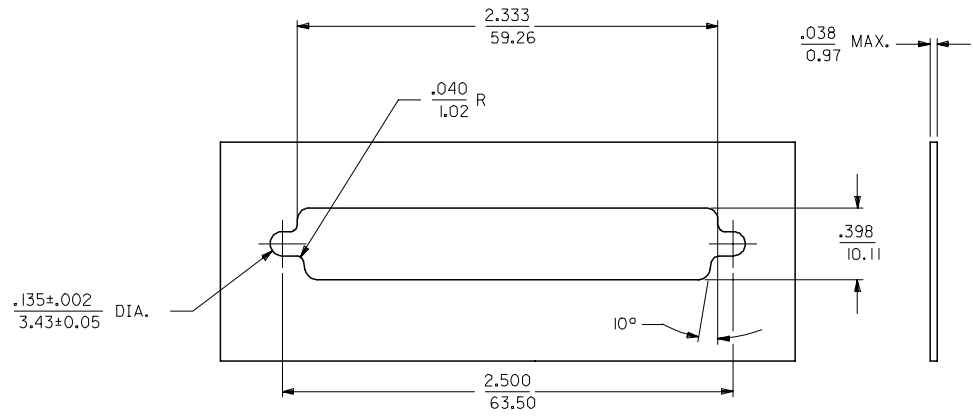
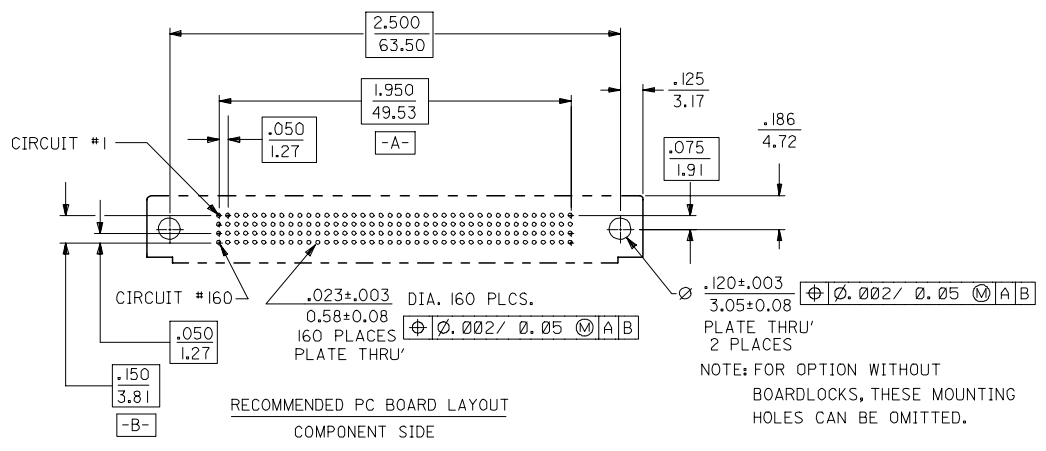
BOARDLOCK: .000150-.000200/ 0.00381-0.00508 TIN  
 OVER .000050/ 0.00127 MINIMUM NICKEL.

3) THIS PART CONFORMS TO MOLEX PRODUCT SPECIFICATION PS-71626.

4) PACKAGING SPECIFICATION PK-70873-297 APPLIES.

NOTE FOR LEAD FREE CONVERSION:

THE PRIMARY SHIPPING CARTON WILL BE  
 LABELED \*COMPLIANT TO RoHS DIRECTIVE  
 2002/95/EC AND ELV ANNEX II OF  
 DIRECTIVE 2000/53/EC\*. CARTONS  
 WITHOUT THIS LABEL MAY CONTAIN  
 PRODUCT WITH LEAD.



PANEL CUT-OUT DIMENSIONS

ALL TOLERANCES ±.003/ 0.08  
 UNLESS OTHERWISE STATED.

MODIFY PACKAGING EC NO: UCP2007-0515 DRWN:MS/BARRA 2006/09/18 CHKD:DMORGAN 2006/09/26 APPR:SMILLER 2006/09/27 REVISION DESCRIPTION	QUALITY SYMBOLS	GENERAL TOLERANCES (UNLESS SPECIFIED) mm INCH 4 PLACES ± --- ± --- 3 PLACES ± --- ± --- 2 PLACES ± --- ± --- 1 PLACE ± --- ± --- ANGULAR ±1/2°	DIMENSION STYLE	SCALE	DESIGN UNITS	THIRD ANGLE PROJECTION	
	=0 ∇=0		IN/MM	2:1	INCH	☉ □ THIRD ANGLE PROJECTION	
							.050 PITCH LFH 160 CKT VERTICAL I/O MALE SALES ASSEMBLY
							MOLEX INCORPORATED MATERIAL NO. SDA-71624-**** DOCUMENT NO. SHEET NO. 2 OF 2
		DRAFT WHERE APPLICABLE MUST REMAIN WITHIN DIMENSIONS	SEE TABLE SIZE C	THIS DRAWING CONTAINS INFORMATION THAT IS PROPRIETARY TO MOLEX INCORPORATED AND SHOULD NOT BE USED WITHOUT WRITTEN PERMISSION			