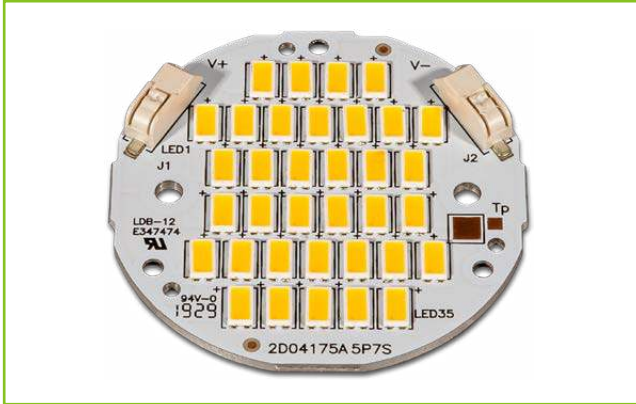




QLUXR5010W35LED930
10W Round DC LED Board



Wattage	10W
CRI	90.8
Available CCT	2700K, 3000K
Lumens	≈ 1360 lm
Efficacy	132 lm/W
Number of LEDs	35
Beam Angle	120°
Dimensions	50mm OD
Dimming	Constant Current Reduction



FEATURES

- Superior Color Rendering CRI 90.8
- High efficacy lumen output 132 lm/W
- LM-80 compliant LEDs
- Tight Binning 3 Step Mac Adam Ellipses
- Uniform & crisp light source intensity
- Hot Spot Free Design
- Exceed ENERGY STAR lumen maintenance requirements
- Extra thin low profile
- Low heat generation, easy thermal management
- Easy to fit in new design or retrofit applications

APPLICATIONS

Ideal for new and retrofit architectural designs and lighting fixtures.

Indoor Lighting

- Recessed Can Light
- Ceiling Light
- Wall Sconces
- Table Lamps
- Fixtures
- Signage

Outdoor Lighting

- Street Light
- Marker Light
- Wall Sconces
- Signage Light

ELECTRICAL SPECIFICATIONS

Model #	CCT	Typ. Wattage	Typ. Forward Voltage	Min. Forward Voltage	Max. Forward Voltage	Typ. Forward Current	Max. Forward Current
QLUXR5010W35LED927	2700	10W	21V	17V	21.7V	500mA	700mA
QLUXR5010W35LED930	3000						
QLUXR5010W35LED9-XX	Custom CCT						



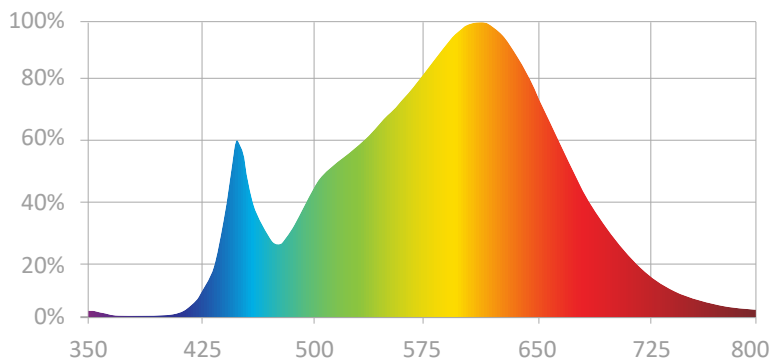
L.T.F.

QLUX DC LED Series



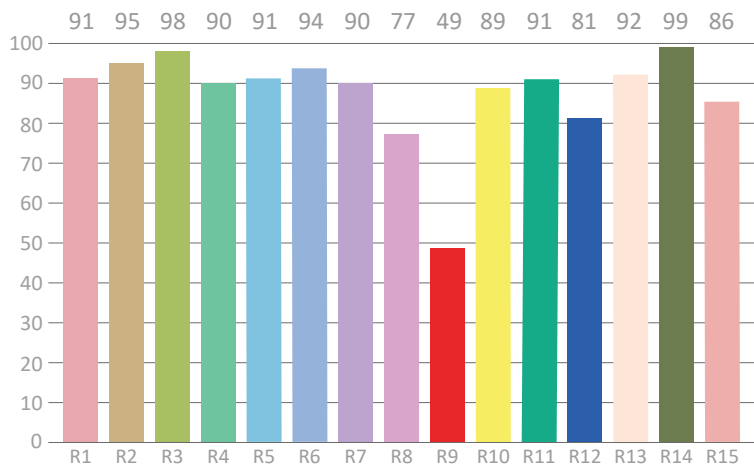
**QLUXR5010W35LED930
10W Round DC LED Board**

SPECTRORADIOMETRIC CHARACTERISTICS - 3000K



Luminous Flux: 1359.66 lm
Radiant Flux: 4.896 W
Efficacy: 132 lm/W
Nominal CCT: LED_3000K
 $x_0=0.4338$ $y_0=0.4030$
Chromaticity Coordinates:
 $x=0.4259$ $y=0.3975$ $u'=0.2463$ $v'=0.5171$
Chromaticity Difference: -0.00106Duv
CCT: 3139 K

CRI TEST RESULTS - 3000K



Color Rendering Index (CRI): Ra=90.8
Dominant Wavelength: 581.0 nm(E)
Peak Wavelength: 615 nm
Colour Fidelity Index: Rf=89
Gamut Index: Rg=99
Color Purity: 0.4734
Color Ratio: Kr=43.2% Kg=48.3% Kb=8.5%
Bandwidth: 166.2 nm

R1=91	R2=95	R3=98	R4=90	R5=91	R6=94	R7=90	R8=77
R9=49	R10=89	R11=91	R12=81	R13=92	R14=99	R15=86	Re=88



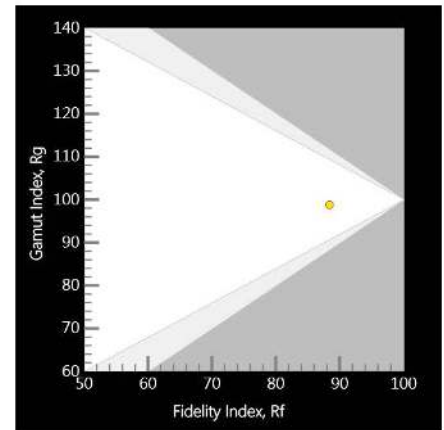
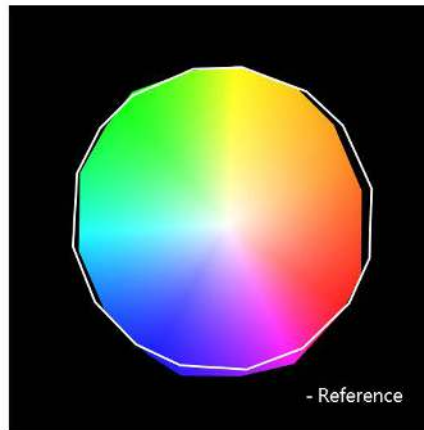
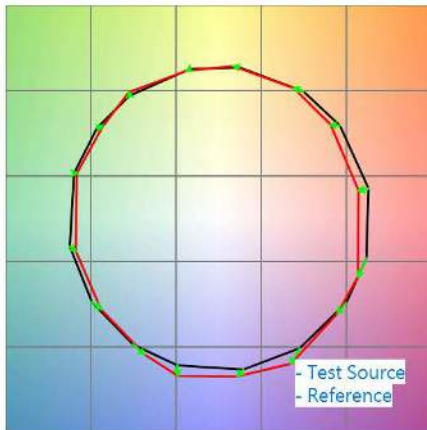
L.T.F.

QLUX DC LED Series

**QLUXR5010W35LED930
10W Round DC LED Board**



TM-30 TEST RESULTS - 3000K

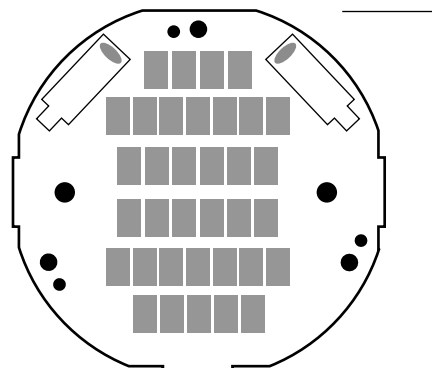


ABSOLUTE MAXIMUM RATINGS (Ta=25°C)

	Symbol	Absolute Maximum Rating	Unit
Forward Current	If	700	mA
Peak Power	P	15.2W	W
Operating Temperature	TOPR	-30~+100	°C
Storage Temperature	Tstg	-40~100	°C
Hand soldering condition	Tsld	3.5sec@350°C	sec
Case Temperature	Tc	100	°C
LED Junction Temperature	Tj	125	°C

MECHANICAL SPECIFICATIONS

Board Dimensions
50mm OD



50mm OD