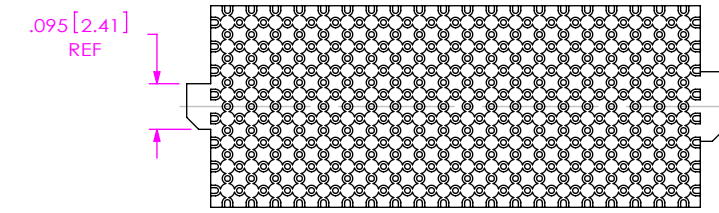
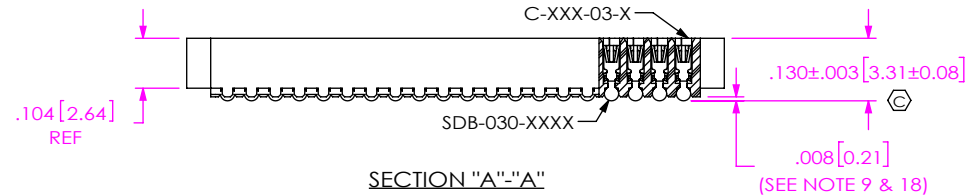
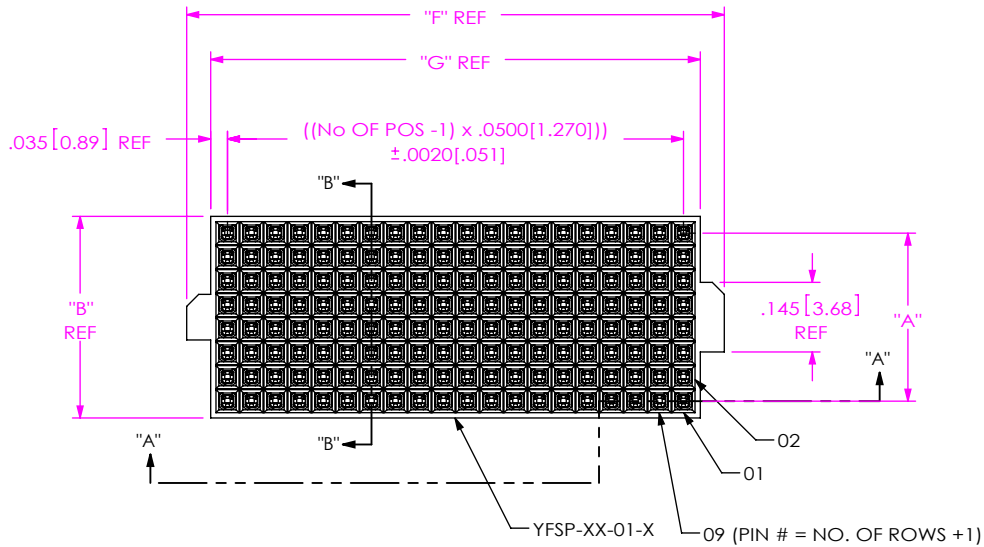


DO NOT SCALE FROM THIS PRINT



**YFS-XX-X3-X-XX-SB-X-XX**

**No OF POSITIONS**  
-20, -30, -40, -50 (PER ROW)

**LEAD STYLE**  
-03: PIN / SOLDERBALLS (USE C-140-03-X, SEE FIG 1)  
-L3: PIN / SOLDERBALLS (LOW INSERTION FORCE) (USE C-226-03-X)

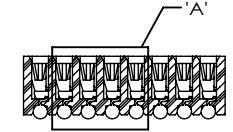
**PLATING SPECIFICATION**  
-G: GOLD (USE C-XXX-03-G)  
-H: HEAVY GOLD (USE C-XXX-03-H)  
-E: EXTRA GOLD (USE C-XXX-03-E)

**PACKAGING**  
BLANK: TRAY (SEE NOTES 19 & 20)  
-TR: TAPE & REEL (SEE NOTES 17, 20 & 21)  
-FR: FULL REEL QTY TAPE & REEL (SEE NOTES 17, 20 & 21)

**PICK & PLACE OPTION**  
-K: POLYAMIDE FILM (SEE FIG 2, SHT 2)

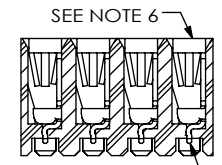
**SOLDER BALLS**   
-SB: SOLDER BALL (USE SDB-030-6337) 37% Pb/63% Sn

**ROW SPECIFICATION**  
-05: FIVE (USE YFSP-XX-01-F)  
-08: EIGHT (USE YFSP-XX-01-E)  
-10: TEN (USE YFSP-XX-01-T)  
-06: SIX (USE YFSP-XX-01-6) (AVAILABLE IN 20 POS ONLY)  
-03: THREE (USE YFSP-XX-01-3) (AVAILABLE IN 20 POS ONLY) (SEE NOTE 17)



SECTION "B"-"B"

IN-PROCESS WITHOUT SOLDERBALLS



DETAIL 'A' SCALE 5 : 1

**TABLE 1**

ROW	"A"	"B"
-03	.1000 [2.540]	.170 [4.318]
-05	.2000 [5.080]	.270 [6.858]
-06	.2500 [6.350]	.320 [8.128]
-08	.3500 [8.890]	.420 [10.668]
-10	.4500 [11.430]	.520 [13.208]

**TABLE 3**

POS	"F"	"G"
-20	1.120 [28.45]	1.020 [25.91]
-30	1.620 [41.15]	1.520 [38.61]
-40	2.120 [53.85]	2.020 [51.31]
-50	2.620 [66.55]	2.520 [64.01]

**TABLE 2 - SOLDERBALL PARTS ONLY**

PART (POSITION)	20	30	40	50
MAX COPLANARITY	.004[0.10]	.007[0.18]	.008[0.20]	.008[0.20]
MAX T/B BOW *	.002[0.05]	.002[0.05]	.002[0.05]	.0025[0.064]

\* AFTER SOLDERBALL ATTACHMENT

NOTES:

1. REPRESENTS A CRITICAL DIMENSION.
2. NOTE DELETED.
3. MAXIMUM BURR ALLOWANCE: .0005[0.013]
4. MINIMUM PUSHOUT FORCE: .5 LB.
5. NOTE DELETED.
6. CONTACT TO BE FLUSH ±.002[0.05]. TO BE MEASURED AT ALL FOUR CORNERS.
7. NOTE DELETED.
8. ALL DIMS TO BE SYMMETRICAL ABOUT THE CENTERLINE WITHIN ±.001[0.03].
9. .0025[0.064] MAX VARIATION BETWEEN SOLDERBALLS.
10. REFER TO VISUAL INSPECTION BOARD FOR SOLDERBALL APPEARANCE CHECKS.
11. THE DISTANCE FROM THE CENTER OF ANY SOLDERBALL TO THE CENTER OF ANY ADJACENT INNER PEG SHALL BE .025 ±.005[0.64 ± 0.13].
12. NOTE DELETED.
13. NOTE DELETED.
14. NOTE DELETED.
15. NOTE DELETED.
16. NO FLASH ALLOWED ON THE PIN TIPS.
17. PARTS WITH -03 ROW SPECIFICATION NOT VALID WITHOUT -TR OR -FR OPTION.
18. SOLDERBALLS MAY HAVE A FLATTENED SURFACE AND APPEARANCE AFTER REPRESS.
19. TRAYS ARE STANDARD PACKAGING.
20. ORDERS WILL BE PACKAGED ACCORDING TO THE SAMTEC PACKAGING EFFICIENCY STANDARDS (SPES) FOUND ON WWW.SAMTEC.COM.
21. ATTACH LABEL TO EACH REEL.

FIG 1  
YFS-20-X3-X-08-SB SHOWN

UNLESS OTHERWISE SPECIFIED, DIMENSIONS ARE IN INCHES.  
TOLERANCES ARE:  
DECIMALS ANGLES  
.XX: ±.01[.3] 2°  
.XXX: ±.005[.13]  
.XXXX: ±.0020[.051]

**PROPRIETARY NOTE**  
THIS DOCUMENT CONTAINS CONFIDENTIAL AND PROPRIETARY INFORMATION AND ALL DESIGN, MANUFACTURING, REPRODUCTION, USE, PATENT RIGHTS AND SALES RIGHTS ARE EXPRESSLY RESERVED BY SAMTEC, INC. THIS DOCUMENT SHALL NOT BE DISCLOSED, IN WHOLE OR PART, TO ANY UNAUTHORIZED PERSON OR ENTITY NOR REPRODUCED, TRANSFERRED OR INCORPORATED IN ANY OTHER PROJECT IN ANY MANNER WITHOUT THE EXPRESS WRITTEN CONSENT OF SAMTEC, INC.

**MATERIAL:** DO NOT SCALE DRAWING SHEET SCALE: 2.5:1  
INSULATOR: LCP, COLOR: BLACK  
CONTACT: PHOS BRONZE

**DESCRIPTION:**  
.050[1.27] MULTI-ROW SOCKET ASSEMBLY  
DWG. NO. **YFS-XX-X3-X-XX-SB-X-XX**  
BY: KEVIN B 4/22/99 SHEET 1 OF 2

**520 PARK EAST BLVD. NEW ALBANY, IN 47150**  
PHONE: 812-944-6733 FAX: 812-948-5047  
e-Mail: info@SAMTEC.com code 55322

F:\DWG\MISC\Mktg\YFS-XX-X3-X-XX-SB-X-XX-MKT.SLDDRW

FIG 2  
 -K: KAPTON PAD  
 YFS-20-X3-X-08-SB-K SHOWN

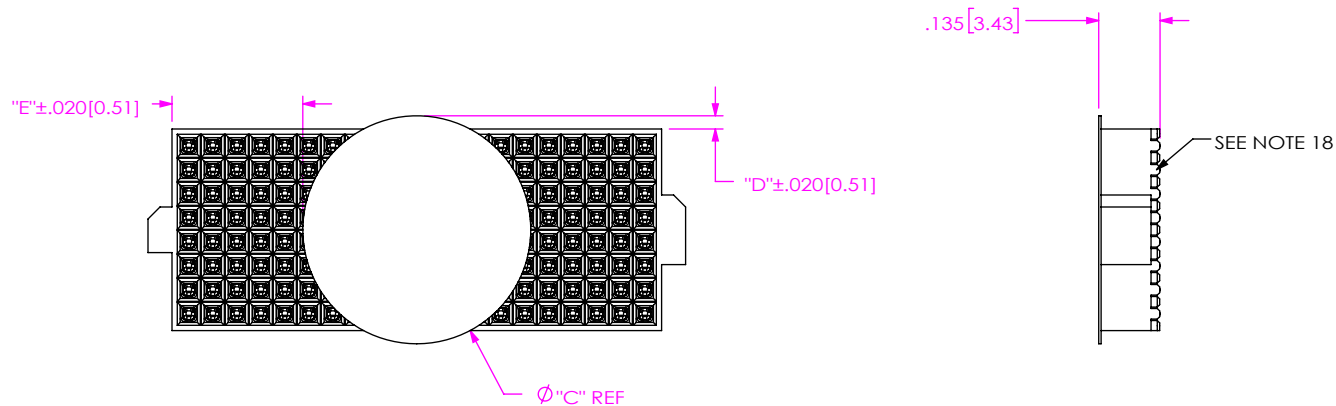


TABLE 5							
ROW	"C"	"D"	"E"				KAPTON TAPE
			-20 POS	-30 POS	-40 POS	-50 POS	
-03	.217 [5.51]	.024 [0.61]	0.4015 [10.198]	0.6515 [16.548]	0.9015 [22.898]	1.1515 [29.248]	K-DOT-.217-.313-.005
-05	.310 [7.87]	.020 [0.51]	0.3550 [9.017]	0.6050 [15.367]	0.8550 [21.717]	1.1050 [28.067]	K-DOT-.310-.406-.005
-06	.354 [8.99]	.017 [0.43]	0.3330 [8.458]	0.5830 [14.808]	0.8330 [21.158]	1.0830 [27.508]	K-DOT-.354-.469-.005
-08	.475 [12.07]	.028 [0.71]	0.2725 [6.922]	0.5225 [13.272]	0.7725 [19.622]	1.0225 [25.972]	K-850-650
-10	.575 [14.61]	.028 [0.71]	0.2225 [5.652]	0.4725 [12.002]	0.7225 [18.352]	0.9725 [24.702]	K-850-650

F:\DWG\MISC\Mktg\YFS-XX-X3-X-XX-SB-X-XX-MKT.SLDDRW

<p><b>PROPRIETARY NOTE</b>                  THIS DOCUMENT CONTAINS INFORMATION CONFIDENTIAL AND PROPRIETARY TO SAMTEC, INC. AND SHALL NOT BE REPRODUCED OR TRANSFERRED TO OTHER DOCUMENTS OR DISCLOSED TO OTHERS OR USED FOR ANY PURPOSE OTHER THAN THAT WHICH IT WAS OBTAINED WITHOUT THE EXPRESSED WRITTEN CONSENT OF SAMTEC, INC.</p> <p>DO NOT SCALE DRAWING</p> <p>SHEET SCALE: 2.5:1</p>		
	<p>520 PARK EAST BLVD, NEW ALBANY, IN 47150                  PHONE: 812-944-6733 FAX: 812-948-5047                  e-Mail info@SAMTEC.com code 55322</p>	
	<p>DESCRIPTION:                  .050[1.27] MULTI-ROW SOCKET ASSEMBLY</p>	
	<p>DWG. NO.                  YFS-XX-X3-X-XX-SB-X-XX</p>	
<p>BY: KEVIN B</p>	<p>4/22/99</p>	<p>SHEET 2 OF 2</p>