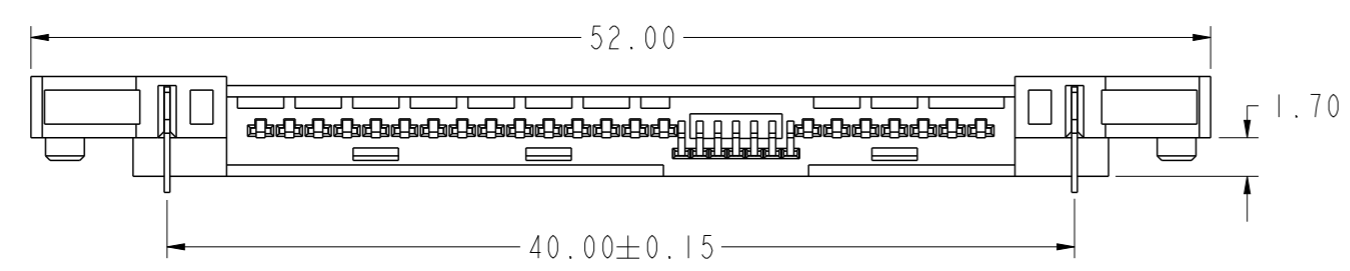
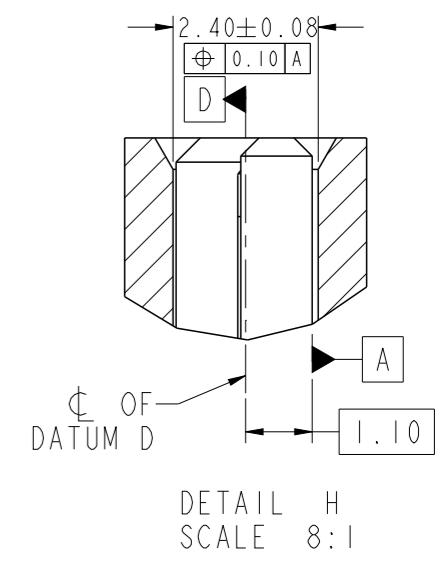
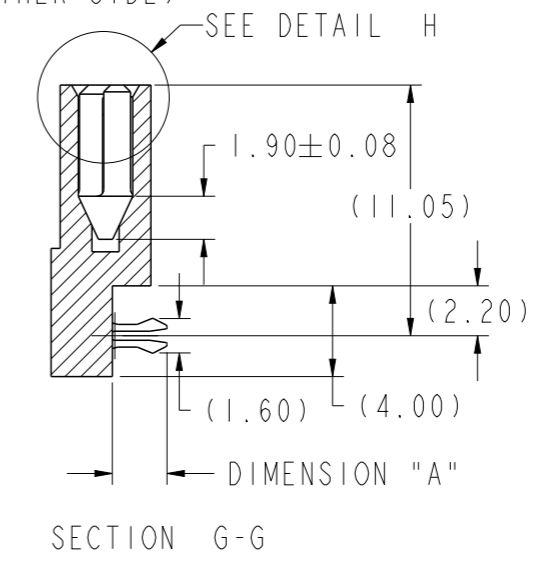
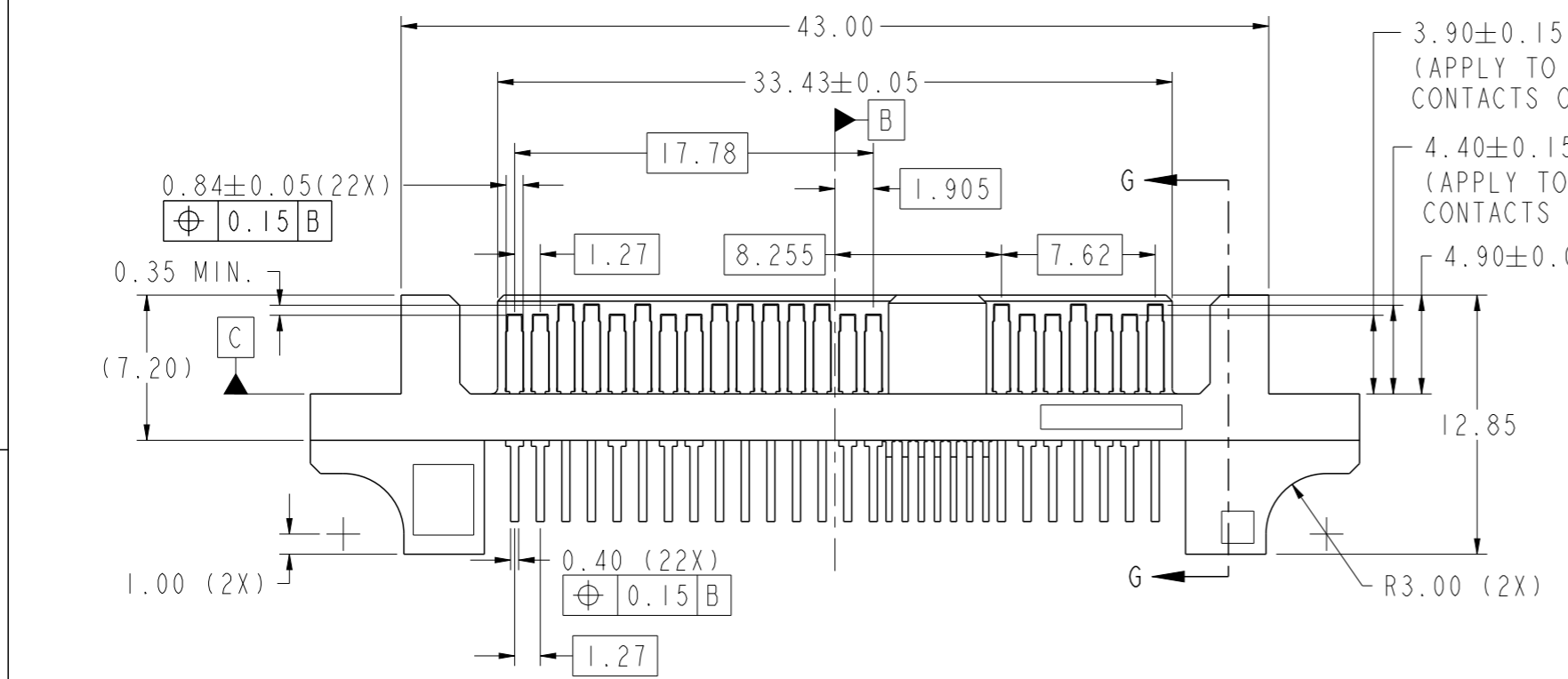
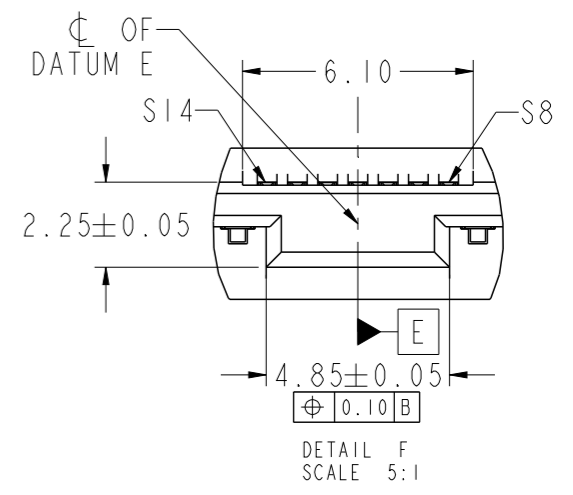
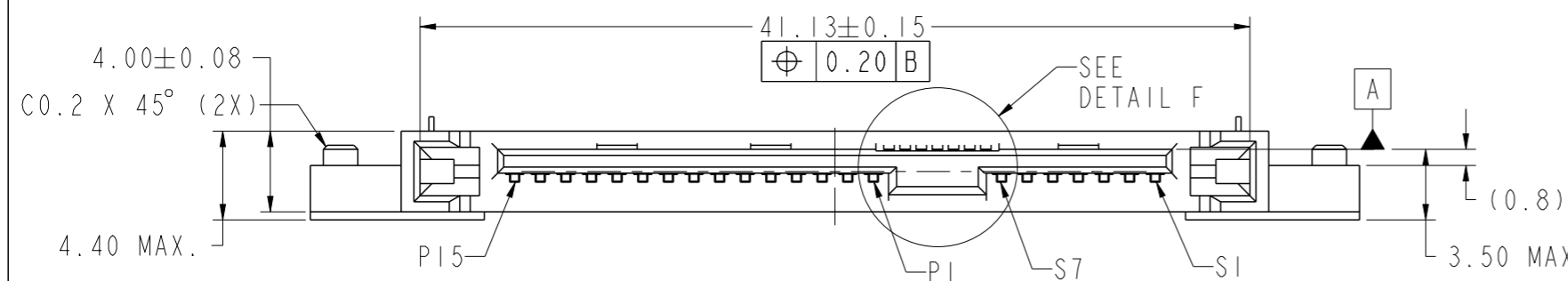


PRODUCT NO.
 10034524-001LF
 10034524-001C-TRLF
 10034524-002LF
 10034524-002C-TRLF

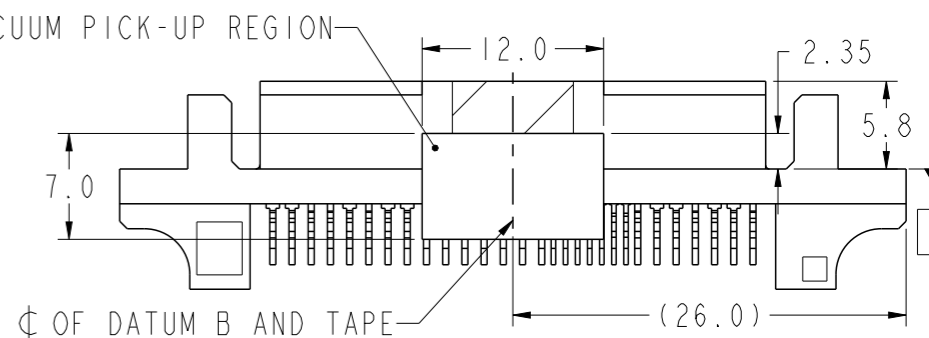
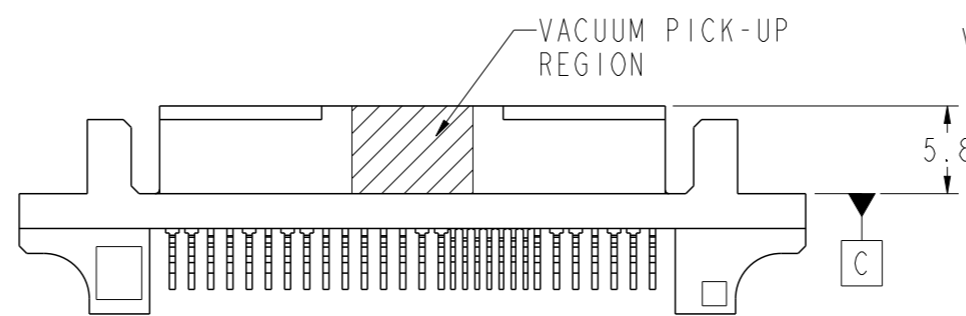
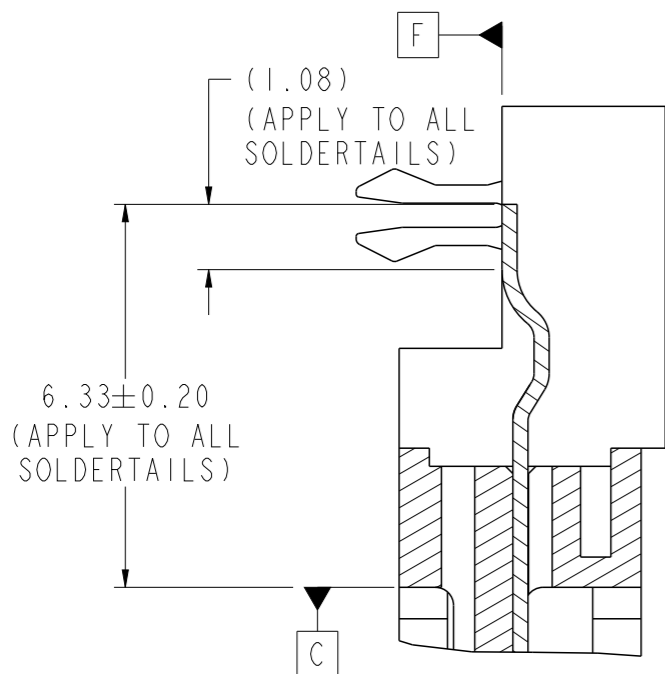
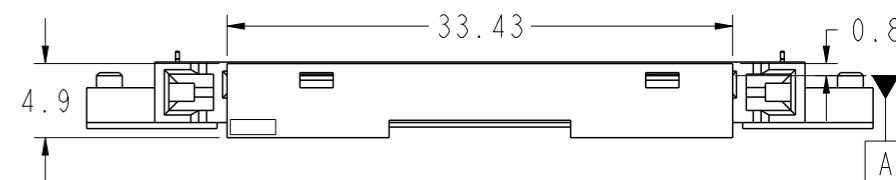
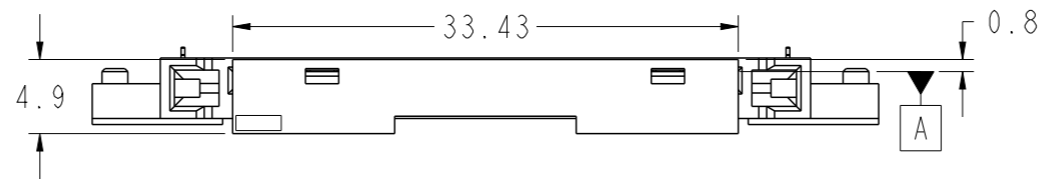
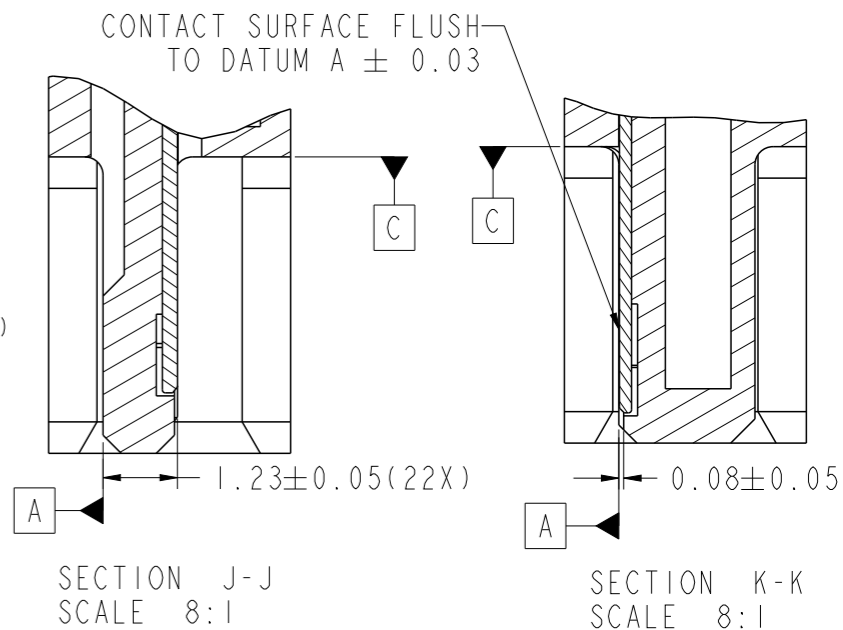
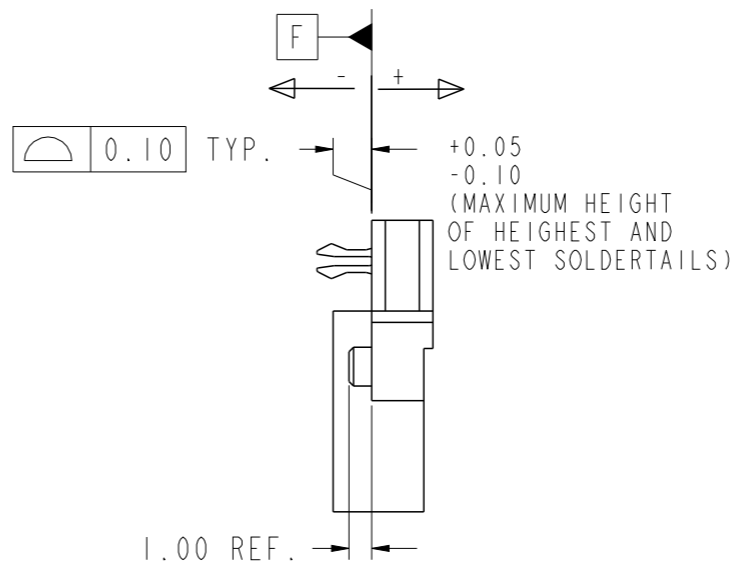
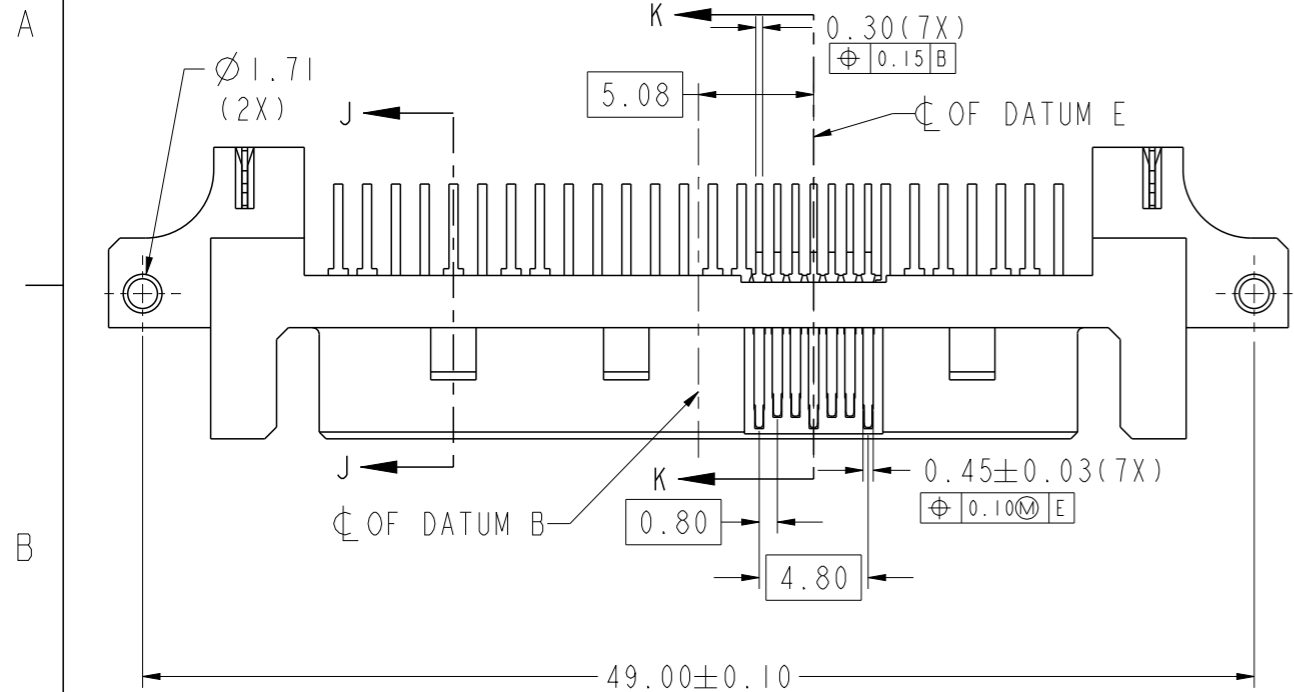


Amphenol
FCi

© 2016 AFCI

spec ref	dr	wcadmin, wcadm	2010/07/16	projection	MM	size	A3	scale	3:1		
tolerance std	eng	Jeffrey Lim	2020/09/28			ecn no	ELX-S-38495-1				
ASME Y14.5	chr	-	-			rel level	Released				
TOLERANCES UNLESS OTHERWISE SPECIFIED	appr	Koon-Poh Tay	2021/01/21	product family		SAS PLUG R/A		dwg no	10034524	rev	S
surface	linear	0.X	± -	TYPE ASSY, Z-HT. 0.80		Product - Customer Drw		sheet 1 of 4			
ASME Y14.5	angular	0.XX	±0.20	cat. no.							
		0.XXX	± -								
		0°	±2°								

PRODUCT NO
SEE TABLE



SCALE 2:1
FOR 10034524-001C-TRLF

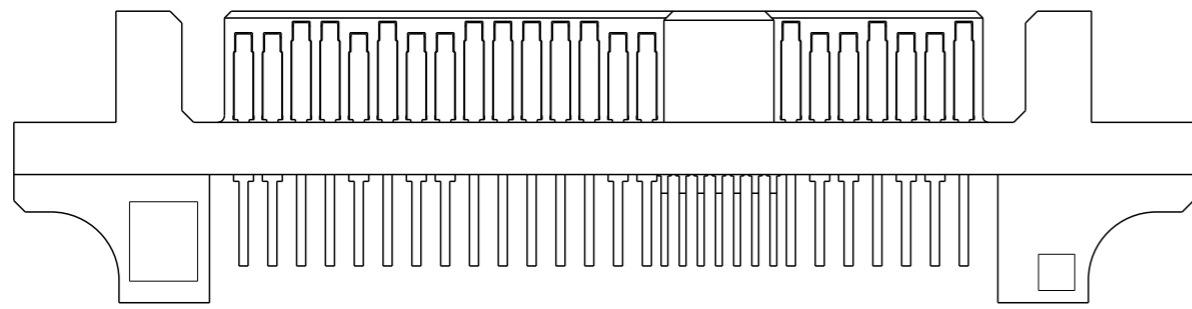
SCALE 2:1
WITH ADHESIVE TAPE AND COVER ATTACHED
(FOR 10034524-002C-TRLF)

SECTION J-J
SCALE 8:1

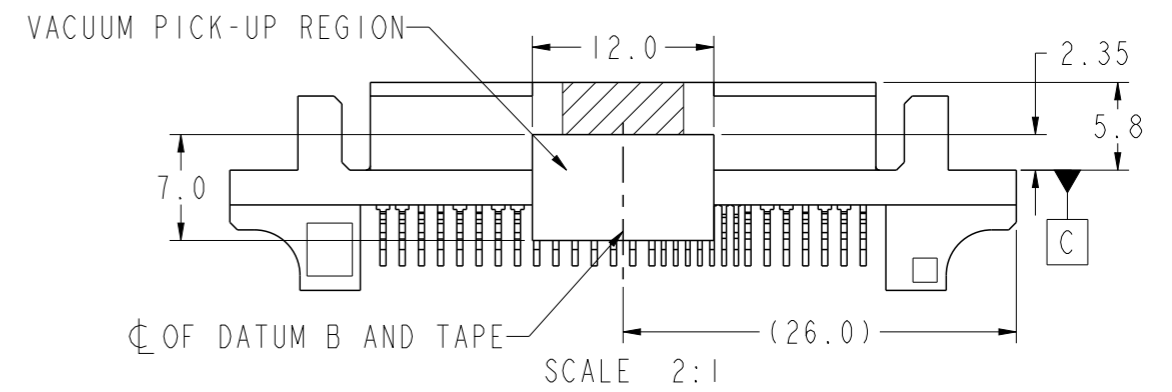
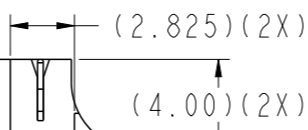
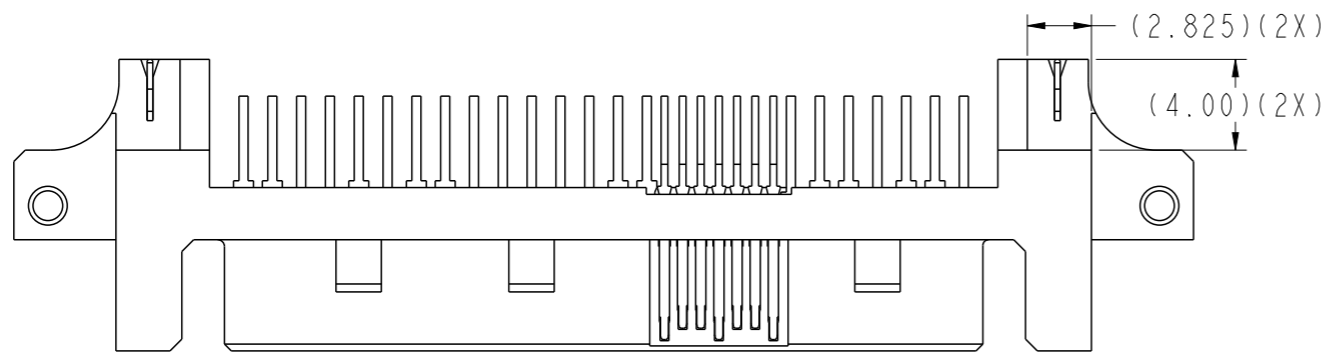
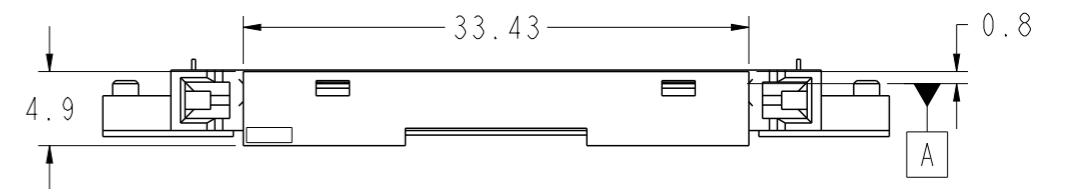
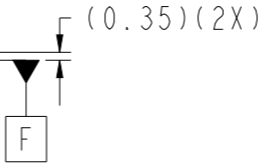
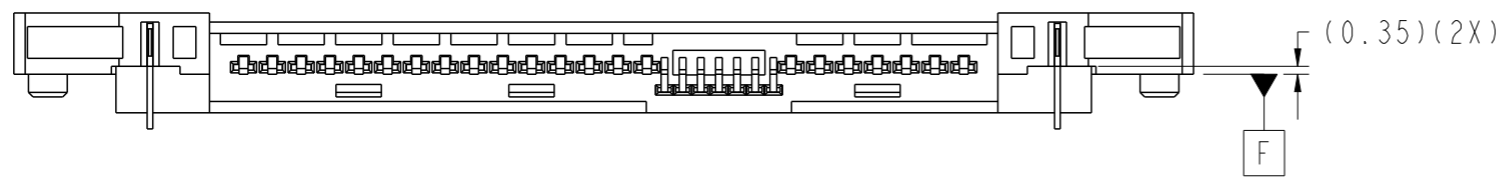
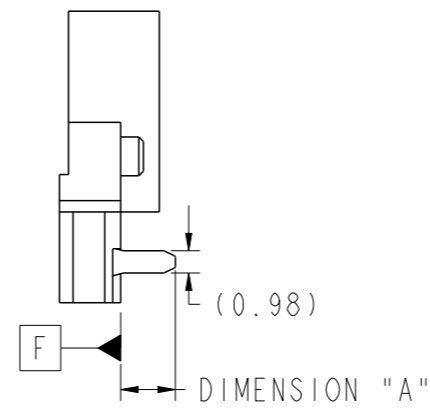
spec ref	dr	wcadmin, wcadm	2010/07/16	projection	MM	size	A3	scale	3:1
tolerance std	eng	Jeffrey Lim	2020/09/28			ecn no	ELX-S-38495-1	rel level	Released
ASME Y14.5	chr	-	-						
	appr	Koon-Poh Tay	2021/01/21	product family					
surface	linear	0.X	± -	Amphenol FCI	SAS PLUG R/A TYPE ASSY, Z-HT. 0.80	dwg no	10034524	rev	S
		0.XX	± 0.20						
		0.XXX	± -						
ASME Y14.5	angular	0°	± 2°	cat. no.	Product - Customer Drw	sheet 2 of 4			

Amphenol FCI
 © 2016 AFCI

PRODUCT NO.
 10034524-003C-TRLF
 10034524-004C-TRLF
 10034524-013TRLF



SCALE 3:1

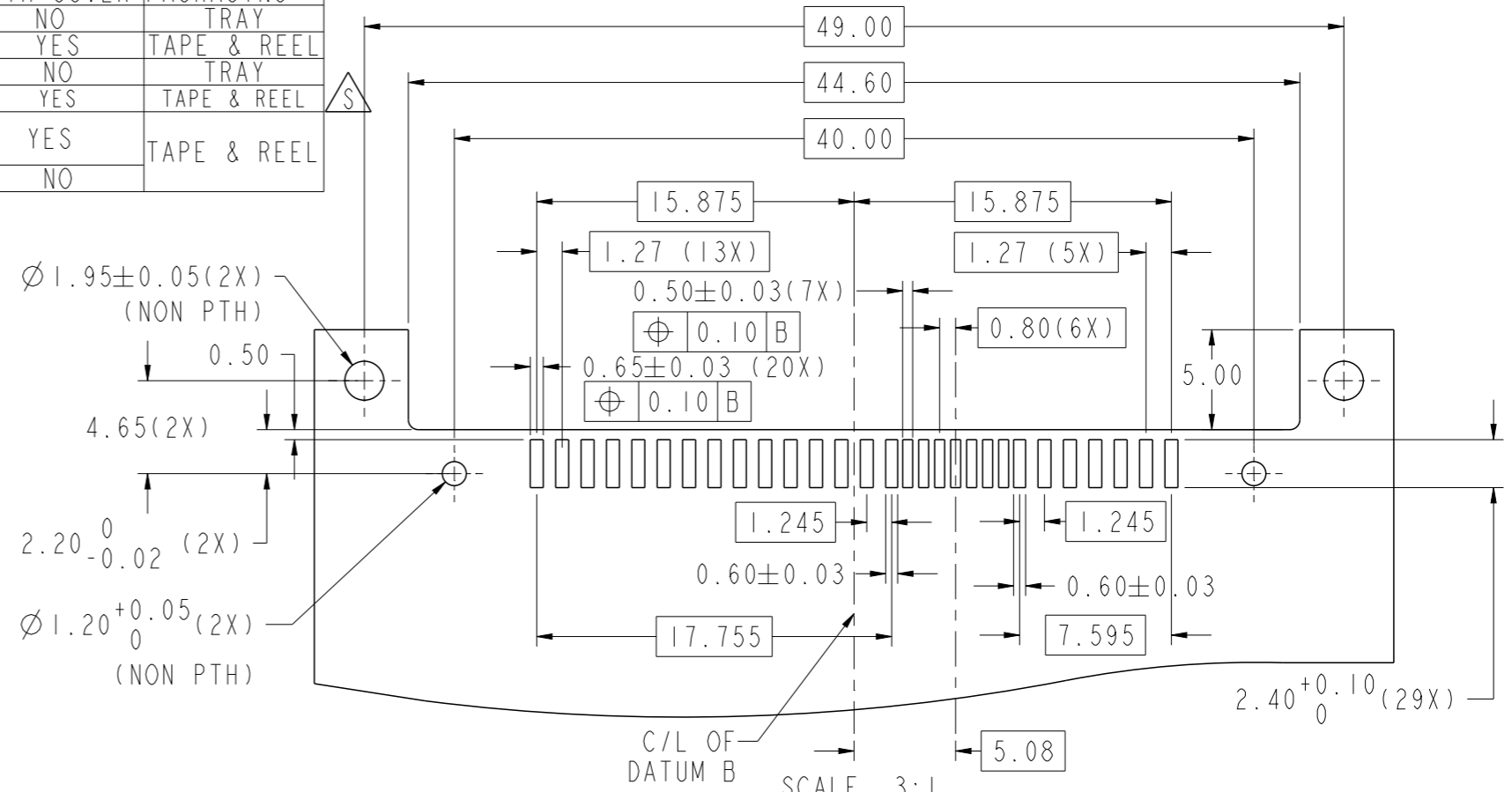


WITH ADHESIVE TAPE AND COVER ATTACHED
 (FOR 10034524-003C/-004C-TRLF)

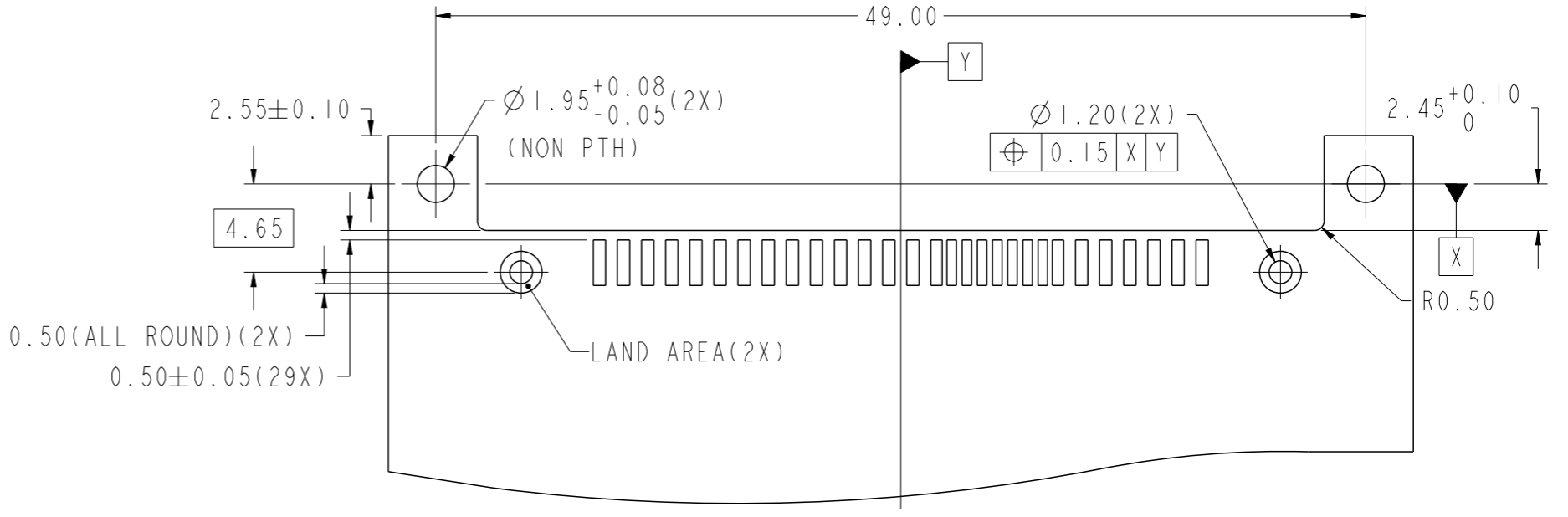
FOR MORE DIMENSIONS, REFER TO 10034524-001/-002

spec ref		dr	wcadmin, wcadm	2010/07/16	projection	MM	size	A3	scale	1:1	
tolerance std		eng	Jeffrey Lim	2020/09/28			ecn no	ELX-S-38495-1			
ASME Y14.5		chr	-	-				rel level	Released		
-		TOLERANCES UNLESS OTHERWISE SPECIFIED			product family		-				
surface	linear	0.X	±	-	Amphenol FCI	SAS PLUG R/A TYPE ASSY, Z-HT. 0.80	dwg no	10034524		rev	S
		0.XX	±	0.20							
ASME Y14.5	angular	0°	±	2°	cat. no.	-	Product - Customer Drw		sheet 3 of 4		

PRODUCT NO.	PCB THICKNESS	DIMENSION "A" WITH ADHESIVE TAPE WITH COVER	WITH COVER	PACKAGING
10034524-001LF	1.60	2.40±0.15	NO	TRAY
10034524-001C-TRLF			YES	TAPE & REEL
10034524-002LF	1.20	2.00±0.15	NO	TRAY
10034524-002C-TRLF			YES	TAPE & REEL
10034524-003C-TRLF	1.60	2.40±0.15	YES	TAPE & REEL
10034524-004C-TRLF	1.20	2.00±0.15	YES	
10034524-013TRLF	1.60	2.40±0.15	YES	



RECOMMENDED PAD LAYOUT FOR 10034524-001/-002



RECOMMENDED PAD LAYOUT FOR 10034524-003/-004/-013 (GENERAL TOLERANCE: ±0.08)
(FOR MORE DIMENSIONS, REFER TO PAD LAYOUT FOR 10034524-001/-002)

- NOTES:
- MATERIAL:
HOUSING & COVER: HIGH TEMPERATURE PLASTIC, BLACK, UL94V-0
CONTACT & HOLD DOWN: COPPER ALLOY
ADHESIVE TAPE: POLYIMIDE
 - FINISH:
CONTACT: 1.27um Min. NICKEL UNDERPLATE OVERALL,
1.91um Min. 100% MATTE TIN(LEAD-FREE) ON SOLDER TAIL,
0.76um Min. GOLD ON CONTACT AREA
HOLD DOWN: 1.91um Min. 100% MATTE TIN(LEAD-FREE) OVER
1.27um Min. NICKEL UNDERPLATE OVERALL
 - RECOMMENDED PCB THICKNESS: 1.20 & 1.60mm
 - PART WITH PICK-UP CAP, P/N. XXXXXXXX-XXXCLF
 - PART NUMBER WITH SUFFIX '-TR' MEANS TAPE & REEL PACKAGING.
E.G.: XXXXXXXX-XXXC-TRLF
 - PRODUCT SPECIFICATION: GS-12-282
 - PACKAGING SPECIFICATION: GS-14-952(TRAY); GS-14-1038(TAPE & REEL)
 - THIS PRODUCT MEETS EUROPEAN UNION DIRECTIVES AND OTHER
COUNTRY REGULATIONS AS DESCRIBED IN GS-47-0004
 - THE HOUSING WILL WITHSTAND EXPOSURE TO 260°C PEAK
TEMPERATURE FOR 10 SECONDS IN A CONVECTION, INFRA-RED
OR VAPOR PHASE REFLOW OVEN
 - A SYMBOL \triangle WILL BE NEXT TO ANY DIMENSION, VIEW OR NOTE WHICH
HAS BEEN MODIFIED WITH THE CURRENT DRAWING REVISION

spec ref	dr	wcadmin, wcadm	2010/07/16	projection	MM	size	A3	scale	1:1
tolerance std	eng	Jeffrey Lim	2020/09/28			ecn no	ELX-S-38495-1	rel level	Released
ASME Y14.5	chr	-	-						
TOLERANCES UNLESS OTHERWISE SPECIFIED	appr	Koon-Poh Tay	2021/01/21	product family		rel level	Released		
surface	linear	0.X	±-	Amphenol FCI		dwg no	10034524	rev	S
		0.XX	±0.20	SAS PLUG R/A					
		0.XXX	±-	TYPE ASSY, Z-HT. 0.80					
ASME Y14.5	angular	0°	±2°	cat. no.		Product - Customer Drw	sheet 4 of 4		

Amphenol FCI

© 2016 AFCI