



Electrical specifications

Center Frequency: 390 MHz
Insertion Loss: 2 dB Max
Return Loss: 14 dB Min
Rejection: >60 dB @ 0-250 MHz
>30 dB @ 320 MHz
>6 dB @ 365 MHz
>6 dB @ 415 MHz
>30 dB @ 460 MHz
>60 dB @ 640 MHz

Power Handling: 10 W

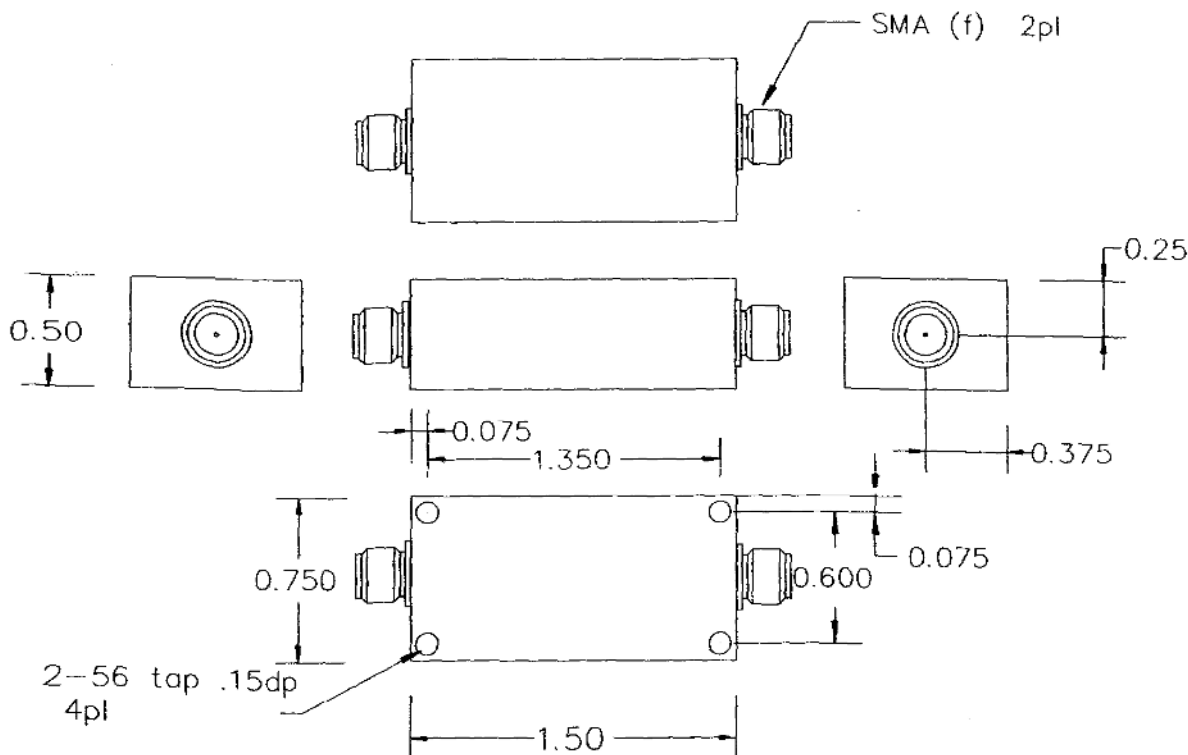
Mechanical

Dimensions: 1.5 x 0.75 x 0.5 inches
Connector Type: SMA (F)

Environmental

Operating Temperature: -55 to +85° C
Shock: 30 G. 11ms
Vibration: 10 G. 5 to 1000 Hz

Outline Drawing:



DWG 986215 ajs 1/99
Outline Drawing
Anatech Electronics Inc.
(986114)

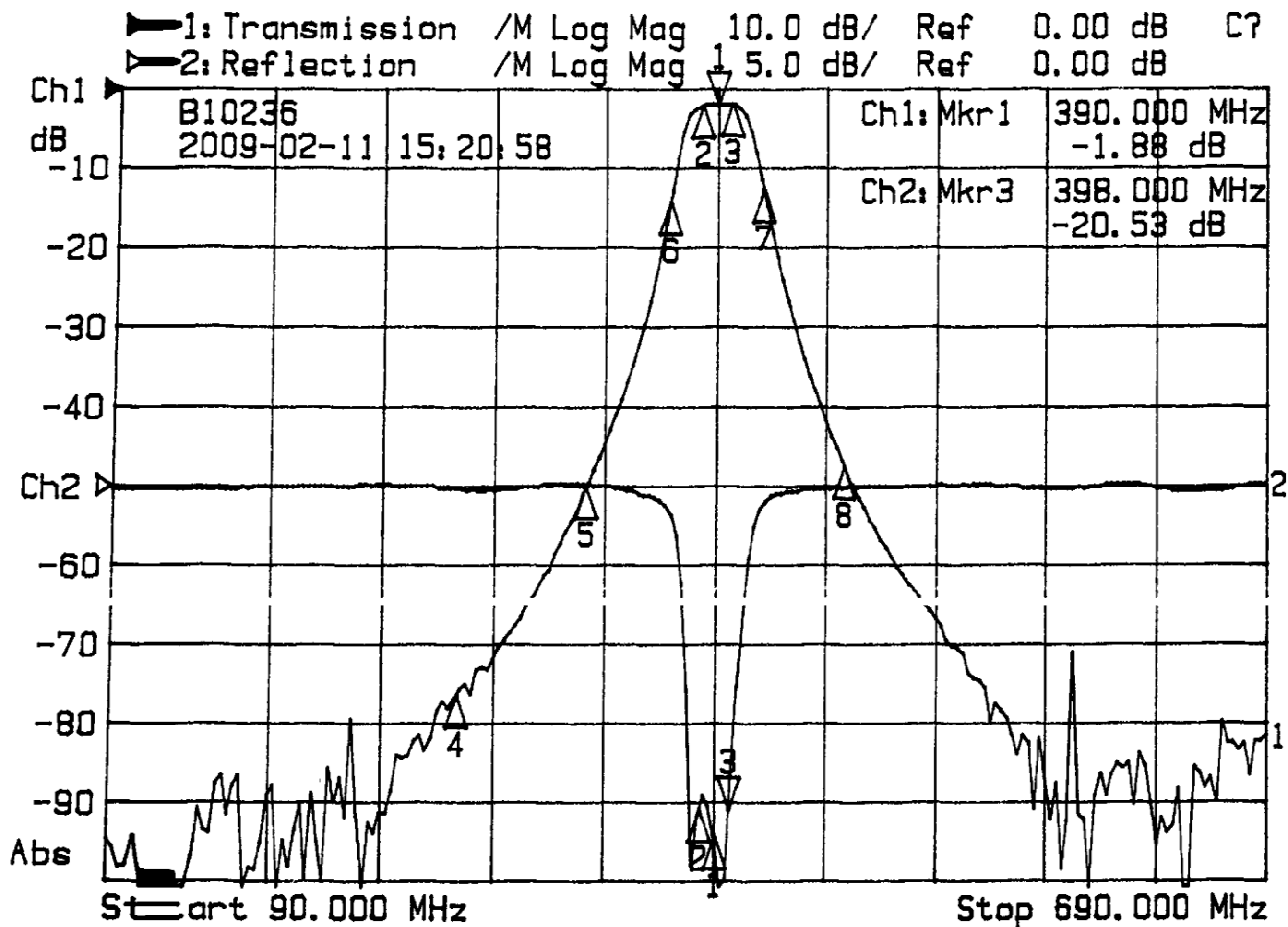


390 MHz LC Bandpass Filter

Part Number: AE390B10236



Plot:



1: Mkr (MHz)	dB	2: Mkr (MHz)	dB
1: 390.00	-1.88	1: 390.00	-22.22
2: 382.00	-2.07	2: 382.00	-20.41
3: 398.00	-1.95	3: 398.00	-20.53
4: 250.00	-76.50		
5: 320.00	-50.08		
6: 365.00	-14.23		
7: 415.00	-12.70		
8: 460.00	-47.53		