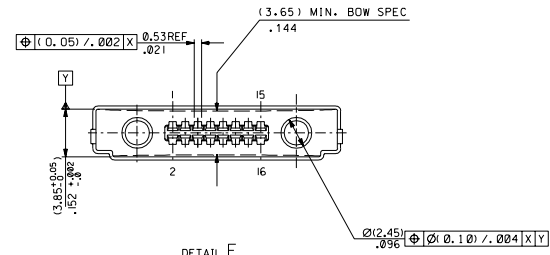
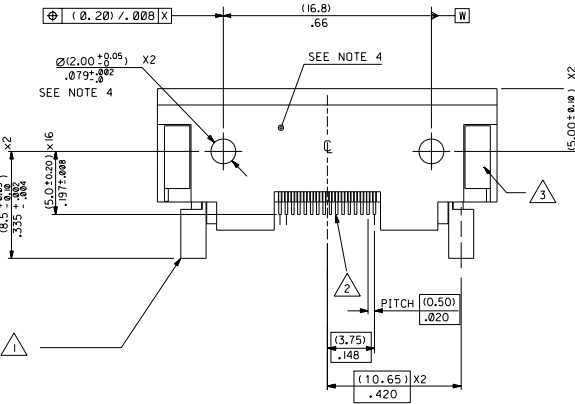


COMPONENT	PCB PAD DIMENSION	QTY
LOCKING LATCHES $\Delta 1$	(2.60) x (0.102) x (4.65) / .183	$\Phi (0.10) / .004 R$ (x2)
SIGNAL CONTACTS $\Delta 2$	(0.35) ± 0.05 / (0.14) ± 0.02 x (2.0) / .08	$\Phi (0.10) / .004 R$ (x16)
SMT RETENTION PADS $\Delta 3$	(2.5) / .098 x (5.0) / .197	$\Phi (0.10) / .004 R$ (x2)

NOTES:

- MATERIALS:  
HOUSING: NYLON 46 50% GLASS FILLED COLOUR BLACK  
SMT RETENTION PADS: PHOSPHOR BRONZE (0.30) / .012 REF. THICK.  
PLATING: (3-5um) / .18- .197um TIN.  
OVER (1.2um) / .050um NICKEL.  
LOCKING LATCHES: PHOSPHOR BRONZE (0.30) / .012 REF. THICK.  
PLATING: (3-5um) / .18- .197um TIN.  
OVER (1.2um) / .050um NICKEL.  
SIGNAL CONTACTS: PHOSPHOR BRONZE (0.20) / .008 REF. THICK.  
PLATING: (1.2um) / .050um MIN. NICKEL UNDERCOAT OVERALL.  
GOLD FLASH (0.1um) / .004um MIN.  
OVER PALLADIUM NICKEL (1.0um) / .039um MIN. IN CONTACT AREA. (3.0um) / .18um MIN. TIN ON TAIL SECTION.
- MATES WITH 90813 SERIES PLUG CONNECTOR.
- SEE PRODUCT SPECIFICATION P5-99020-0045.
- ALL SMT TAILS TO LIE WITHIN A COPLANARITY BAND OF (0.0) / .0 - (0.1) / .004 REF. FROM EACH OTHER AND BELOW HOUSING BASE.
- PRODUCT I.D. MARK \*\* HOT STAMPED IN (1.5) / .06 HIGH TEXT.  
WEEK No. — SALES DRAWING REVISION
- PEGS ARE NOT TO BE USED FOR PCB LOCATION



REMOVE LEAD FROM PLATING EC NO. E2004-0574 DRINK-CARTON 27/12/03 CHK. APPR.	QUALITY SYMBOLS MAJOR = $\blacktriangledown$ CRITICAL = $\blacktriangle$	GENERAL TOLERANCES: (UNLESS SPECIFIED):		SCALE 5:1	DESIGN UNITS $\square$ mm $\square$ INCH	DIMENSIONS: $\square$ mm $\square$ INCH $\square$ mm ONLY	SHT REV REVISE ON CAD ONLY		
		4 PLACES ± 0.	± .	DRAWN BY & DATE HDU 95/03/29	CHECKED BY & DATE	TITLE: I/O CONNECTOR FOR MOBILE PHONE	MATERIAL NO. 90811-0109	DRAWING NO. SDA-90811-0109	SHEET NO. 1 OF 1
		3 PLACES ± 0.	± .002	APPROVED BY & DATE	CAD FILENAME	MOLEX INCORPORATED	INCORPORATED AND SHOULD NOT BE USED WITHOUT WRITTEN PERMISSION.	SIZE D	
		2 PLACES ± 0.05	± .004	DRAFT WHERE APPLICABLE MUST REMAIN WITHIN DIMENSIONS	THIS DRAWING CONTAINS INFORMATION THAT IS PROPRIETARY TO MOLEX INCORPORATED AND SHOULD NOT BE USED WITHOUT WRITTEN PERMISSION.				