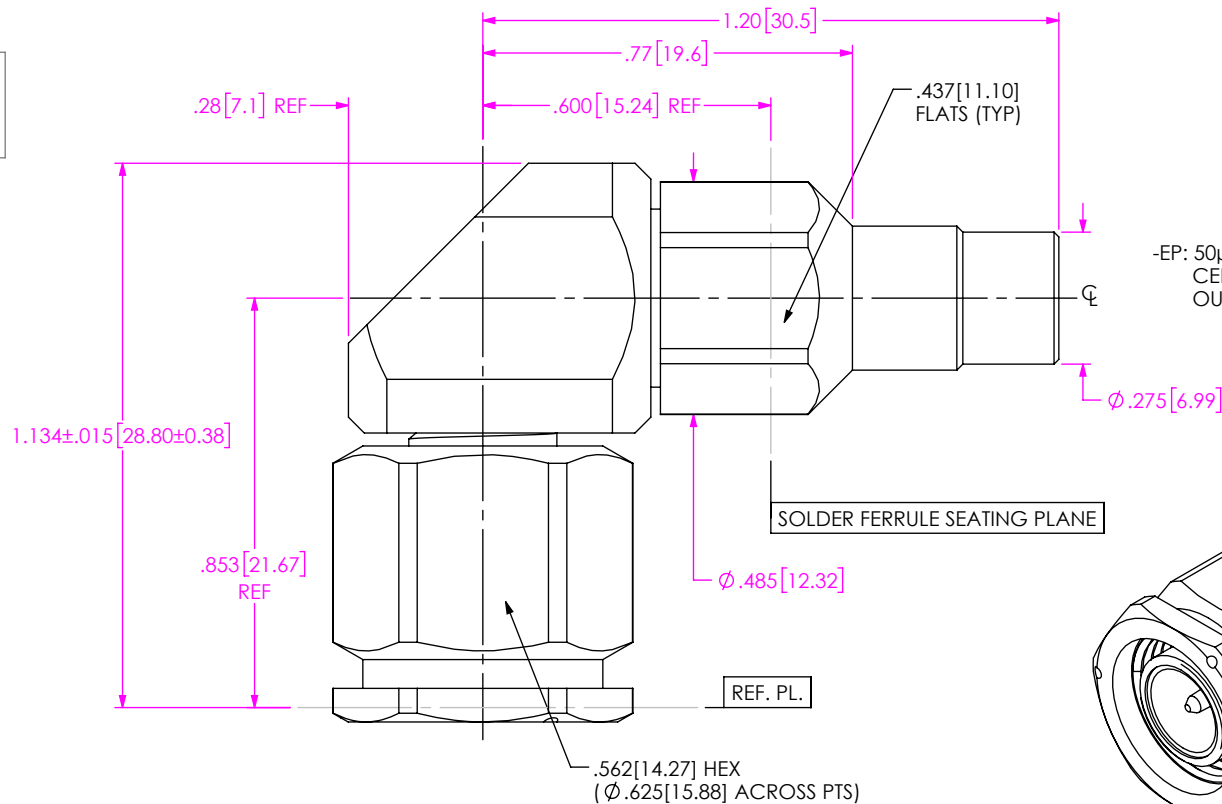


DO NOT SCALE FROM THIS PRINT



PRF04-P-C-EP-190-RS

SERIES
-04: TNCA

GENDER
-P: PLUG

TYPE
-C: CABLE

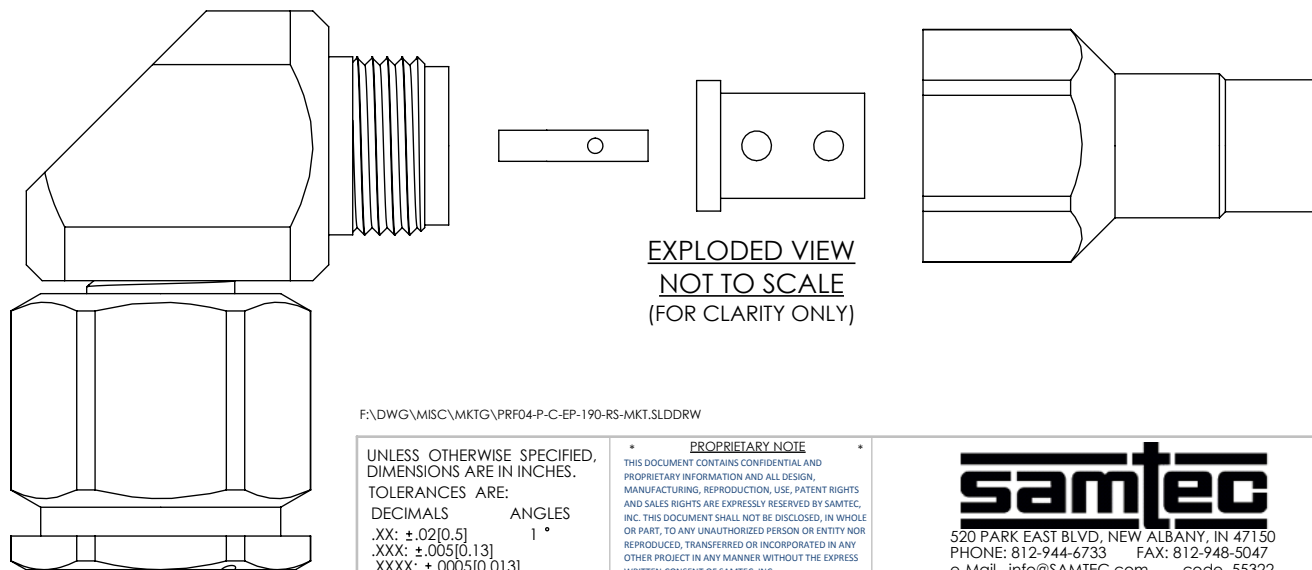
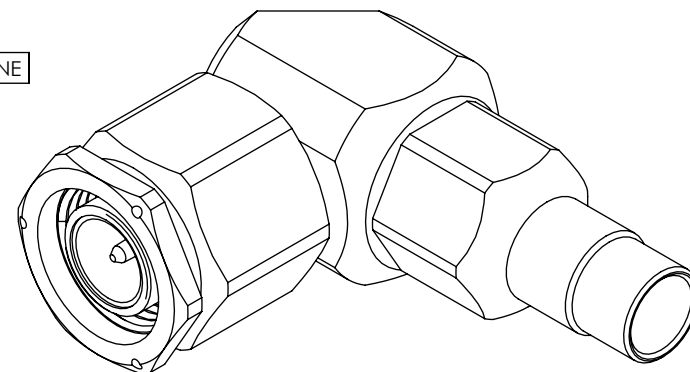
FINISH
-EP: 50μ" EXTRA HEAVY GOLD CENTER CONTACT, PASSIVATED OUTER CONTACT

TERMINATION
-S: SOLDER CLAMP

ORIENTATION
-R: RIGHT ANGLE

CABLE TYPE
-190: SEMFLEX HP190

DESIGNED & DIMENSIONED IN INCHES[MILLIMETERS]



NOTES:

- MATERIAL:**
 BODIES, CLAMP NUT, COUPLING NUT: STAINLESS STEEL
 CONTACTS: BERYLLIUM COPPER
 SOLDER FERRULE: BRASS ALLOY
 INSULATORS: PTFE
 GASKET: SILICONE RUBBER
- FINISH:**
 BODIES, CLAMP NUT, COUPLING NUT: PASSIVATED
 CONTACTS, SOLDER FERRULE: 50μ" MIN. GOLD OVER 50μ" MIN. NICKEL PLATE
- PCI P/N: 3421

F:\DWG\MISC\MKTG\PRF04-P-C-EP-190-RS-MKT.SLDDRW

UNLESS OTHERWISE SPECIFIED, DIMENSIONS ARE IN INCHES.
 TOLERANCES ARE:
 DECIMALS ANGLES
 .XX: ±.02[0.5] 1°
 .XXX: ±.005[0.13]
 .XXXX: ±.0005[0.013]

PROPRIETARY NOTE
 THIS DOCUMENT CONTAINS CONFIDENTIAL AND PROPRIETARY INFORMATION AND ALL DESIGN, MANUFACTURING, REPRODUCTION, USE, PATENT RIGHTS AND SALES RIGHTS ARE EXPRESSLY RESERVED BY SAMTEC, INC. THIS DOCUMENT SHALL NOT BE DISCLOSED, IN WHOLE OR PART, TO ANY UNAUTHORIZED PERSON OR ENTITY NOR REPRODUCED, TRANSFERRED OR INCORPORATED IN ANY OTHER PROJECT IN ANY MANNER WITHOUT THE EXPRESS WRITTEN CONSENT OF SAMTEC, INC.



520 PARK EAST BLVD, NEW ALBANY, IN 47150
 PHONE: 812-944-6733 FAX: 812-948-5047
 e-Mail info@SAMTEC.com code 55322

DO NOT SCALE DRAWING

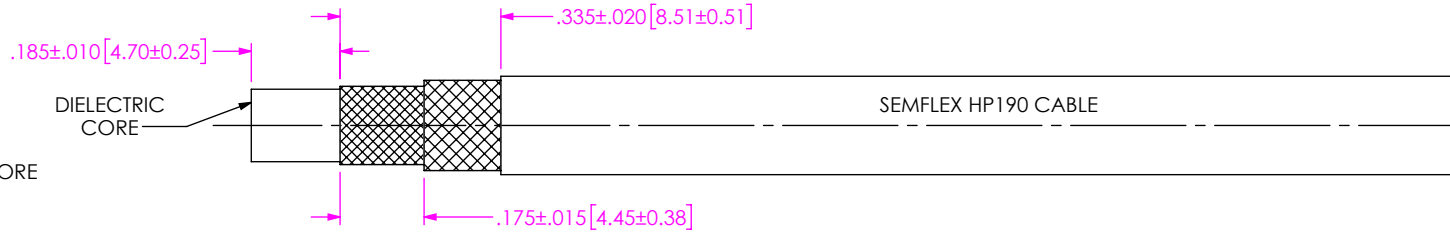
SHEET SCALE: 2.5:1

DESCRIPTION: TNCA, RT. ANGLE PLUG, SOLDER CLAMP FOR HP190 CABLE, L/W HOLES

DWG. NO. PRF04-P-C-EP-190-RS

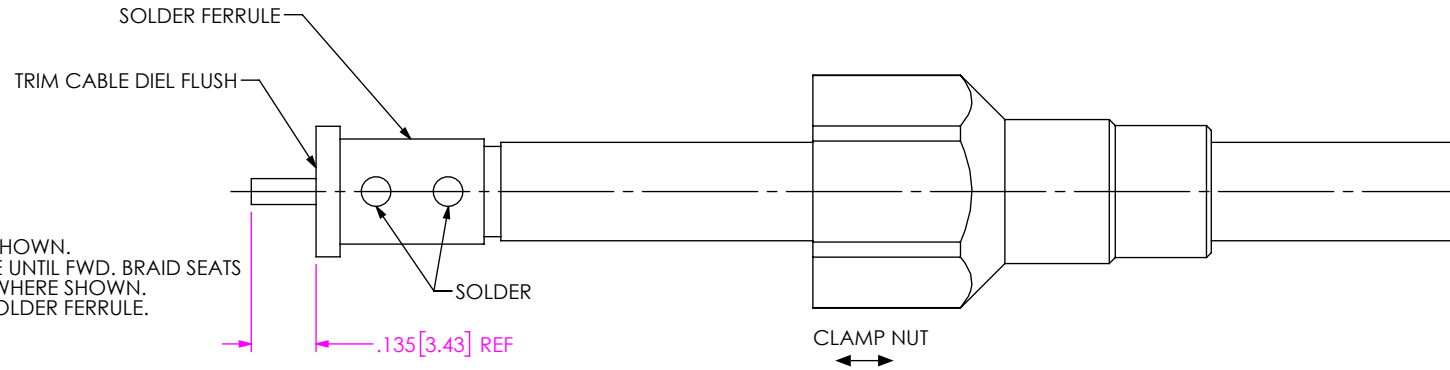
BY: EVE L 05/18/2019 SHEET 1 OF 3

CABLE APPLICATION VIEWS



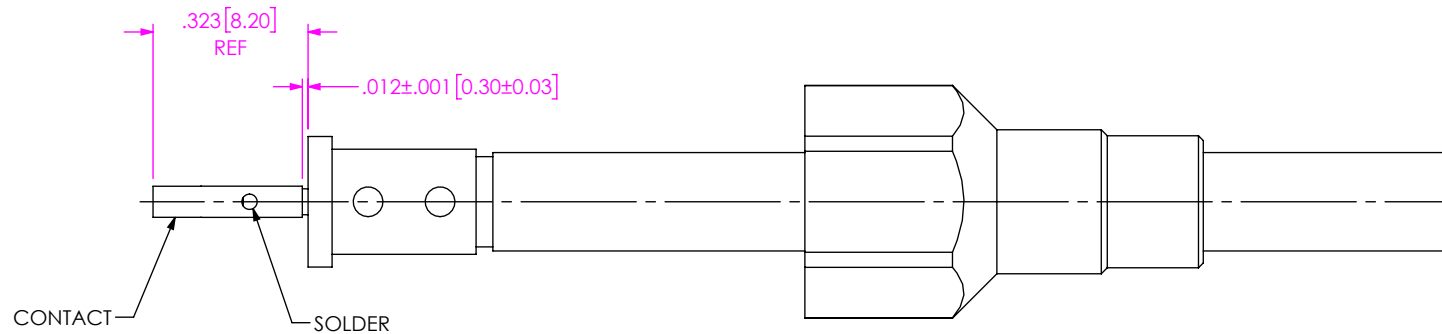
1A. TRIM CABLE TO EXPOSE DIELECTRIC CORE AND BRAID AS SHOWN.

IN-PROCESS VIEW 1



2A. SLIDE CLAMP NUT OVER CABLE AS SHOWN.
 2B. INSERT CABLE INTO SOLDER FERRULE UNTIL FWD. BRAID SEATS THEN SOLDER BOTH CABLE BRAIDS WHERE SHOWN.
 2C. TRIM CABLE DIELECTRIC FLUSH TO SOLDER FERRULE.

IN-PROCESS VIEW 2



3. SOLDER CONTACT WITH GAP INDICATED AS SHOWN.

IN-PROCESS VIEW 3

PROPRIETARY NOTE
 THIS DOCUMENT CONTAINS CONFIDENTIAL AND PROPRIETARY INFORMATION AND ALL DESIGN, MANUFACTURING, REPRODUCTION, USE, PATENT RIGHTS AND SALES RIGHTS ARE EXPRESSLY RESERVED BY SAMTEC, INC. THIS DOCUMENT SHALL NOT BE DISCLOSED, IN WHOLE OR PART, TO ANY UNAUTHORIZED PERSON OR ENTITY NOR REPRODUCED, TRANSFERRED OR INCORPORATED IN ANY OTHER PROJECT IN ANY MANNER WITHOUT THE EXPRESS WRITTEN CONSENT OF SAMTEC, INC.



520 PARK EAST BLVD, NEW ALBANY, IN 47150
 PHONE: 812-944-6733 FAX: 812-948-5047
 e-Mail info@SAMTEC.com code 55322

DO NOT SCALE DRAWING

SHEET SCALE: 2.5:1

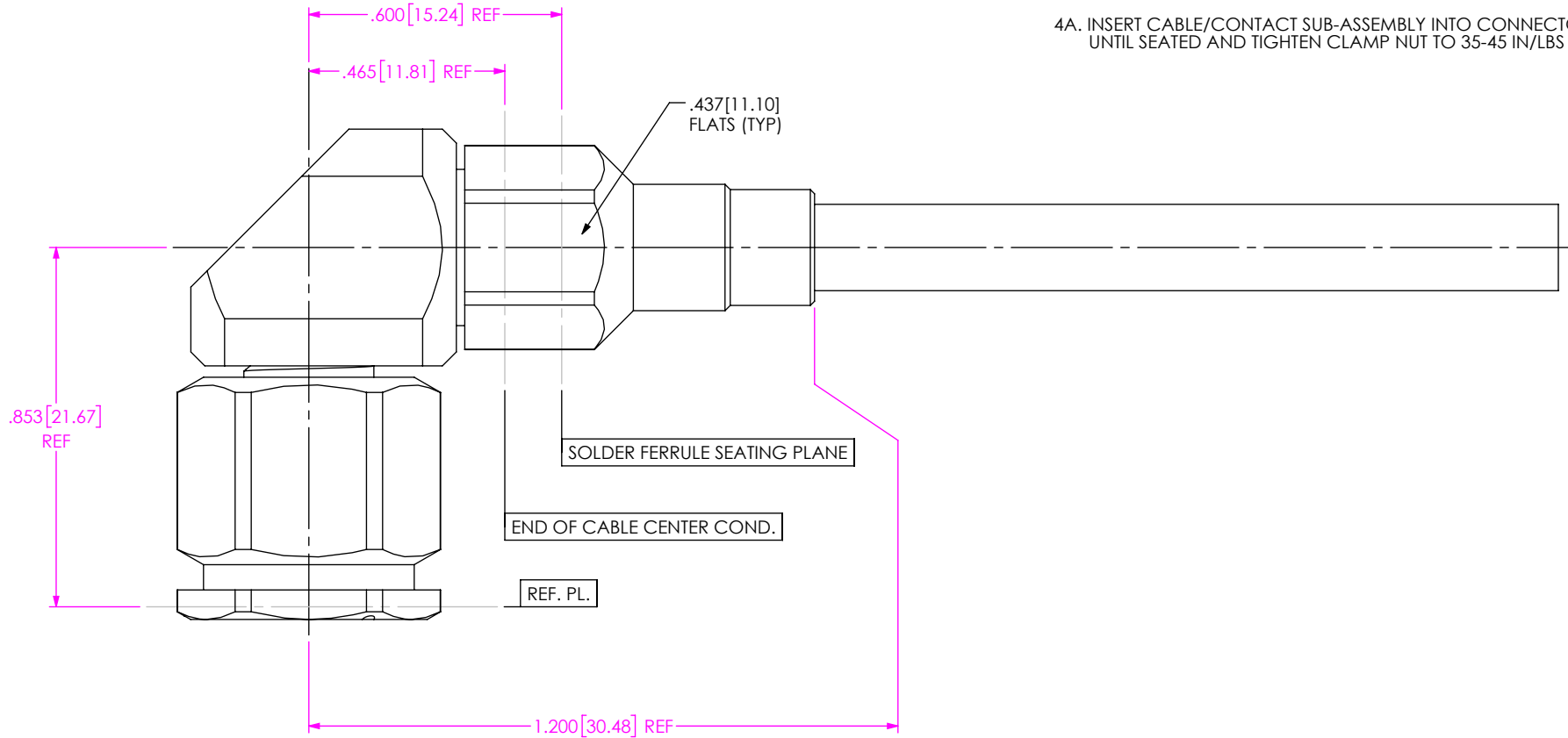
DESCRIPTION: TNCA, RT, ANGLE PLUG, SOLDER CLAMP FOR HP190 CABLE, L/W HOLES

DWG. NO. PRF04-P-C-EP-190-RS

BY: EVE L 05/18/2019 SHEET 2 OF 3

CABLE APPLICATION VIEWS

4A. INSERT CABLE/CONTACT SUB-ASSEMBLY INTO CONNECTOR UNTIL SEATED AND TIGHTEN CLAMP NUT TO 35-45 IN/LBS



IN-PROCESS VIEW 4

PROPRIETARY NOTE
 THIS DOCUMENT CONTAINS CONFIDENTIAL AND PROPRIETARY INFORMATION AND ALL DESIGN, MANUFACTURING, REPRODUCTION, USE, PATENT RIGHTS AND SALES RIGHTS ARE EXPRESSLY RESERVED BY SAMTEC, INC. THIS DOCUMENT SHALL NOT BE DISCLOSED, IN WHOLE OR PART, TO ANY UNAUTHORIZED PERSON OR ENTITY NOR REPRODUCED, TRANSFERRED OR INCORPORATED IN ANY OTHER PROJECT IN ANY MANNER WITHOUT THE EXPRESS WRITTEN CONSENT OF SAMTEC, INC.



520 PARK EAST BLVD, NEW ALBANY, IN 47150
 PHONE: 812-944-6733 FAX: 812-948-5047
 e-Mail info@SAMTEC.com code 55322

DO NOT SCALE DRAWING

SHEET SCALE: 2.5:1

DESCRIPTION: TNCA, RT. ANGLE PLUG, SOLDER CLAMP FOR HP190 CABLE, L/W HOLES

DWG. NO. PRF04-P-C-EP-190-RS

BY: EVE L 05/18/2019 SHEET 3 OF 3