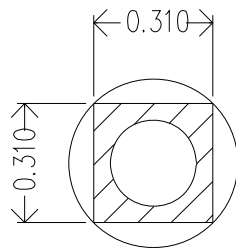
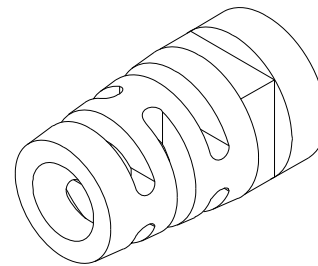
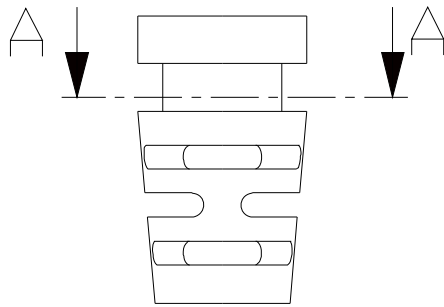
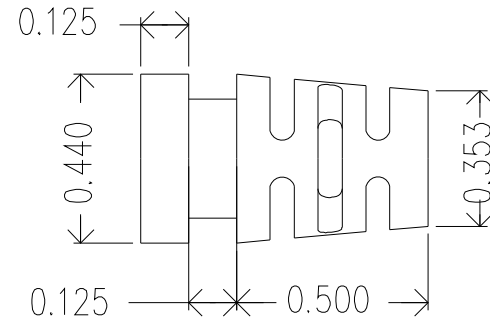
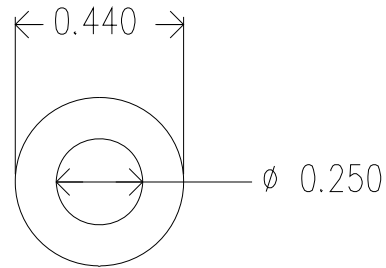


| REVISIONS | | | | |
|-----------|------|-------------|------|----------|
| ZONE | REV. | DESCRIPTION | DATE | APPROVED |
| | | | | |



A-A

Stock Strain Relief

Dimensions are subject to change.
PROPRIETARY AND CONFIDENTIAL

THE INFORMATION CONTAINED IN THIS DRAWING IS THE SOLE PROPERTY OF ISC ENGINEERING. ANY REPRODUCTION IN PART OR AS A WHOLE WITHOUT THE WRITTEN PERMISSION OF ISC ENGINEERING IS PROHIBITED.

Mold Material: ISC P/N: 5000214, PVC, M1472, Blk

| | | | | | | | |
|-------------|---------|--------------------------|--|-----------|----------|--|----------|
| | | DIMENSIONS ARE IN INCHES | | NAME | DATE | ISC Engineering 4351 Schaefer Ave, Chino, CA 91710 Ph: 909-596-3315 Fax: 909-596-3335 www.iscengineering.com www.overmoldtooling.com | |
| | | TOLERANCES: | | DRAWN | R FIERRO | | 02/28/06 |
| | | FRACTIONAL ± | | CHECKED | | | |
| | | ANGULAR: MACH ± BEND ± | | ENG APPR. | | | |
| | | TWO PLACE DECIMAL ± | | MFG APPR. | | | |
| | | THREE PLACE DECIMAL ± | | Q.A. | | | |
| | | MATERIAL -- | | COMMENTS: | | 1461080-250-125-310x310-440-0 | |
| NEXT ASSY | USED ON | FINISH -- | | | | SIZE A DWG. NO. 1467114 REV. | |
| APPLICATION | | DO NOT SCALE DRAWING | | | | SCALE: 5:1 WEIGHT: SHEET 1 OF 1 | |

ISC ENGINEERING
CONTROLLED COPY
Rich Fierro 06/26/2018