

ITEM NUMBER	DESCRIPTION
71626-4000	GUIDE HARDWARE ATTACHED

ADD COSMETIC NOTE  
 FC NO: UCP2006-3051  
 DRAWN BY: BARRA 2006/07/10  
 CHKD: BORGAN 2006/07/10  
 APPR: SMILLER 2006/07/11

QUALITY SYMBOLS  
 ▽=0  
 ▽=0

GENERAL TOLERANCES (UNLESS SPECIFIED)

	mm	INCH
4 PLACES	± .010	± .0004
3 PLACES	± .010	± .0004
2 PLACES	± 0.25	± .010
1 PLACE	± .010	± .0004

ANGULAR ±1/2°

DRAFT WHERE APPLICABLE  
 MUST REMAIN WITHIN DIMENSIONS

DIMENSION STYLE  
 IN/MM

SCALE  
 4:1

DESIGN UNITS  
 INCH

THIRD ANGLE PROJECTION

TITLE  
 .050 PITCH LFH 160 CKT.  
 RIGHT ANGLE I/O FEMALE  
 SALES ASSY W/HARDWARE

APPROVED BY: JWF 1995/03/31

MATERIAL NO.  
 SEE TABLE

MOLEX MOLEX INCORPORATED

DOCUMENT NO.  
 SDA-71626-400\*

SHEET NO.  
 1 OF 2

THIS DRAWING CONTAINS INFORMATION THAT IS PROPRIETARY TO MOLEX INCORPORATED AND SHOULD NOT BE USED WITHOUT WRITTEN PERMISSION

NOTES:

1) MATERIALS:

HOUSING: LIQUID CRYSTAL POLYMER, 30% GLASS FILLED, 94V-0, BLACK  
 TAIL ALIGNER: LIQUID CRYSTAL POLYMER, 30% GLASS FILLED, 94V-0, BLACK  
 MOLDED STICK: LIQUID CRYSTAL POLYMER, 30% GLASS FILLED, 94V-0, BLACK  
 FEMALE CONTACT: BERYLLIUM COPPER, .0100±.0005/0.254±.013  
 OUTER SHELL: LOW CARBON STEEL  
 THREADED INSERT: BRASS

2) PLATING:

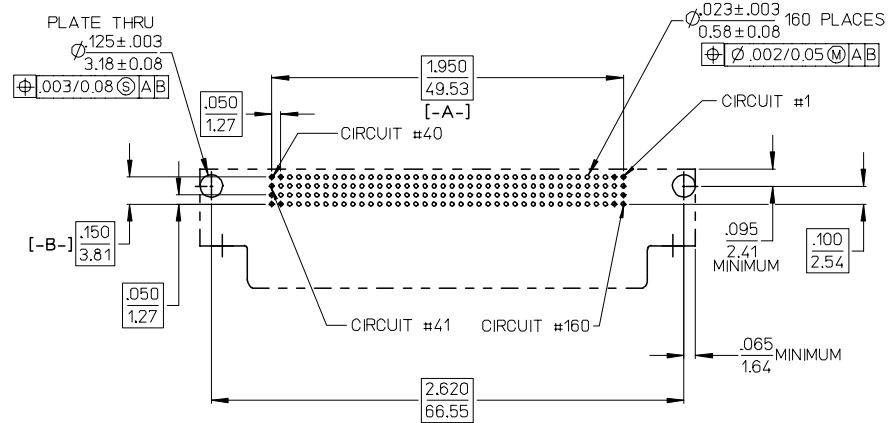
CONTACT: 30 MICROINCHES/0.76 MICROMETERS MINIMUM GOLD  
 OVER 50 MICROINCHES/1.27 MICROMETERS MINIMUM NICKEL  
 IN CONTACT AREA  
 100 MICROINCHES/2.54 MICROMETERS MINIMUM PURE TIN (MATTE FINISH)  
 ON TAIL SECTION, OVER 50 MICROINCHES/1.27 MICROMETERS MINIMUM  
 NICKEL OVERALL

OUTER SHELL: 150-250 MICROINCHES/3.81-6.35 MICROMETERS BRIGHT TIN OVER  
 50-150 MICROINCHES/ 1.27-3.81 MICROMETERS NICKEL OVER COPPER  
 FLASH OVERALL (OPTIONAL)

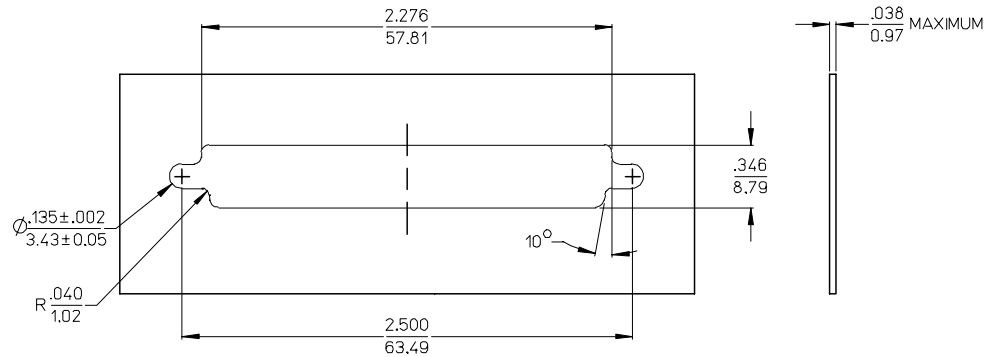
3) THIS PART CONFORMS TO MOLEX PRODUCT SPECIFICATION PS-71626.

4) PACKAGING SPECIFICATION PK-70873-0299 APPLIES.

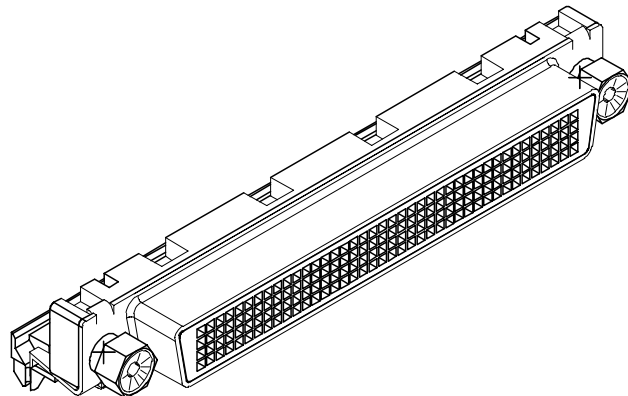
5) PART COMPLIES WITH CLASS B OF COSMETIC SPECIFICATION PS-45499-002



RECOMMENDED PC BOARD LAYOUT  
 COMPONENT SIDE



PANEL CUT-OUT DIMENSIONS  
 ALL TOLERANCES ±.003/0.08  
 UNLESS OTHERWISE STATED.



CONVERT TO ME10 EC NO: UCP2006-3051 DRAWN BY: BARRA 2006/07/10 CHKD: MORGAN 2006/07/10 APPR: MILLER 2006/07/11	QUALITY SYMBOLS ▽=0 ▽=0	GENERAL TOLERANCES (UNLESS SPECIFIED)		DIMENSION STYLE IN/MM		SCALE 2:1	DESIGN UNITS INCH	THIRD ANGLE PROJECTION	
		4 PLACES ± --- ± ---	mm	INCH	DRAWN BY	DATE	TITLE		
		3 PLACES ± --- ± .010			SCHMIDGALL	1995/03/31	.050 PITCH LFH 160 CKT. RIGHT ANGLE I/O FEMALE SALES ASSY W/HARDWARE		
		2 PLACES ± 0.25 ± ---			MOS	1995/03/31	MOLEX MOLEX INCORPORATED		
1 PLACE ± --- ± ---			APPROVED BY	DATE	DOCUMENT NO.				
		ANGULAR ±1/2°	GWF	1995/03/31	SDA-71626-400*				
			MATERIAL NO.		DOCUMENT NO.		SHEET NO.		
							2 OF 2		
DRAFT WHERE APPLICABLE MUST REMAIN WITHIN DIMENSIONS		SEE TABLE		THIS DRAWING CONTAINS INFORMATION THAT IS PROPRIETARY TO MOLEX INCORPORATED AND SHOULD NOT BE USED WITHOUT WRITTEN PERMISSION					