

THIS DRAWING IS UNPUBLISHED.		RELEASED FOR PUBLICATION		
COPYRIGHT © BY TYCO ELECTRONICS CORPORATION. ALL RIGHTS RESERVED.				
PART NUMBER	REV	TERMINATOR	FEED TYPE	DESCRIPTION
1529256-1	B	BENCH & LEADMAKER	MECH POST FEED	HDI APPLICATOR
7-1529256-1	B	BENCH & LEADMAKER	MECH POST FEED	-1 AND SPARE PARTS
7-1529256-7	A	-	-	SPARE PARTS KIT

LOC	DIST	REVISIONS			
A	66	REV	DATE	BY	APPV
		A	04OCT2007	LJL	MC
		B	03NOV2009	MY	TE

CRIMP DATA STOCKO TERMINAL TE CRIMP SPECS <sup>5</sup>

TERMINAL NAME: RECEPTACLE, LOW INSERTION FORCE

CRIMP	SIZE	TYPE	RANGE
WIRE	1.40 [1.055 IN]	F	0.22-0.50mm <sup>2</sup> or 24-20 AWG <sup>6</sup>
INSUL	2.54 [1.00 IN]	F	1.00-2.18 [1.039-.086 IN]

WIRE STRIP LENGTH 3.60-4.40 [1.42-.173 IN]

APPL INSTRUCTIONS 408-8323 & 408-8490

TERMINAL APPL SPEC

FEED 16.00 [1.630 IN]

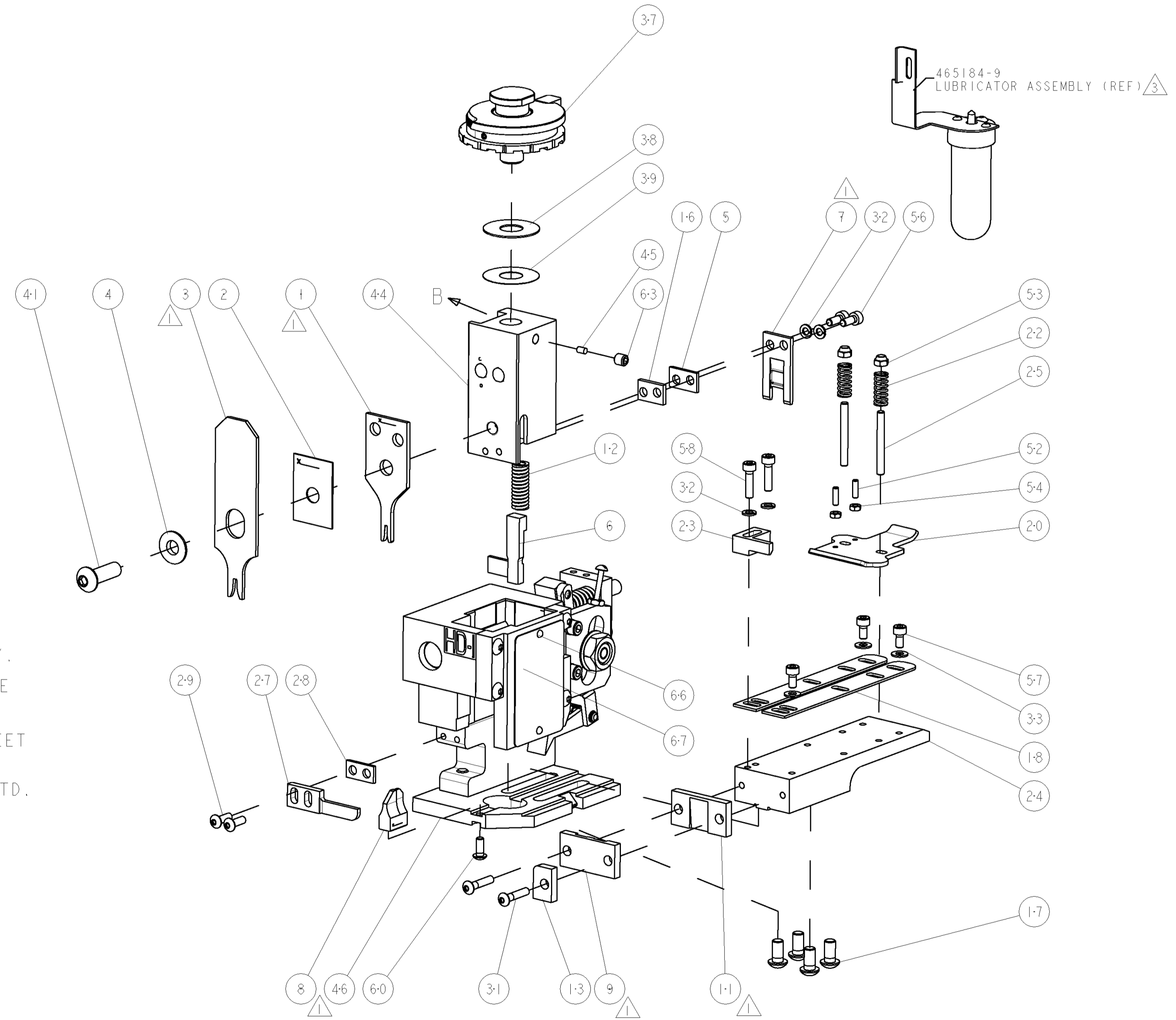
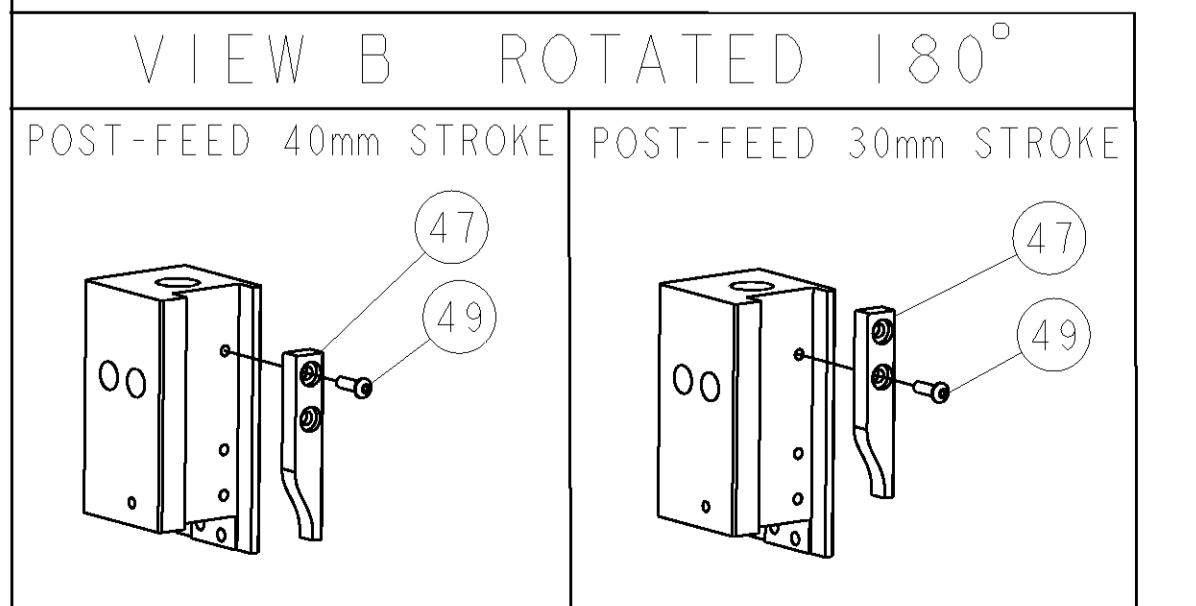
TERMINALS APPLIED

TE TERM PN	MANUF TERM PN		
1949476-1	8100.2058	-	-
1949476-2	8100.2055	-	-
-	-	-	-
-	-	-	-

WIRE SIZE	CRIMP HEIGHT	REF SETTING
0.50mm <sup>2</sup>	1.09 ± 0.05 [1.043 ± .002 IN]	B 0
0.34mm <sup>2</sup>	0.99 ± 0.05 [1.039 ± .002 IN]	B 7
0.24mm <sup>2</sup>	0.94 ± 0.05 [1.037 ± .002 IN]	C 0
24 AWG	0.91 ± 0.05 [1.036 ± .002 IN]	C 3
-	-	-
-	-	-
-	-	-
-	-	-
-	-	-
-	-	-
-	-	-
-	-	-
-	-	-

- <sup>1</sup> RECOMMENDED SPARE PARTS
- 2. GREASE RAM, CAM, CAM FOLLOWER AND FEED ROD LIGHTLY.
- <sup>3</sup> CERTAIN TERMINALS REQUIRE LUBRICATION. REFER TO THE APPLICATOR INSTRUCTION SHEET FOR MORE INFORMATION.
- 4. LUBRICATE DAILY PER THE APPLICATOR INSTRUCTION SHEET SUPPLIED WITH THE APPLICATOR.
- <sup>5</sup> ALL CRIMP DATA CALCULATED BY TYCO ELECTRONICS UK LTD.
- <sup>6</sup> WIRE RANGE SHOWN IS THAT OF THE TERMINAL.

**\* WARNING**  
ON INSTALLATION, SET WIRE DISC TO LARGEST WIRE SIZE SETTING. USE OF SETTINGS BELOW MIN. REQUIRED CRIMP HEIGHT SETTING WILL CAUSE DAMAGE TO CRIMP TOOLING.



-	1	1	1338705-4	DOCUMENTATION PACKAGE	71	
-	1	1	461264-5	PLATE, IDENTIFICATION	67	
-	2	2	21017-2	SCREW, DRIVE	66	
-	1	1	3-18031-0	SCR, SET, CUP POINT M6 X 6.0	63	
-	1	1	18024-7	SCR, BTN SKT HD CAP (M4 X 10.0)	60	
-	2	2	1-18023-3	SCR, SKT HD CAP M4 X 16.0	58	
-	3	3	1-18023-0	SCR, SKT HD CAP M4 X 8.0	57	
-	2	2	1-18023-1	SCR, SKT HD CAP M4 X 10.0	56	
-	2	2	18029-1	NUT, HEX, REG M3	54	
-	2	2	986965-1	NUT, LOCK, HEX, TORQUE (M4)	53	
-	2	2	2-18032-2	SCR, SET, FLT POINT M3 X 10.0	52	
-	1	1	18024-3	SCR, BTN SKT HD CAP (M3 X 10.0)	49	
-	1	1	1338676-1	CAM, UNIVERSAL POST-FEED	47	
-	1	1	1338662-1	SUB ASSY, APPLICATOR FRAME	46	
-	1	1	690191-1	PLUG, NYLON	45	
-	1	1	1320998-1	RAM	44	
-	1	1	2-18024-6	SCR, BTN SKT HD CAP (M8 X 25.0)	41	
-	1	1	690125-1	SHIM SUB-ASSY	39	
-	1	1	469367-8	SHIM	38	
-	1	1	879103-3	FINE ADJUST HEAD ASSEMBLY	37	
-	3	3	18027-2	WASHER, FLAT, REG M4	33	
-	4	4	18025-2	WASHER, SPRG LOCK, REG M4	32	
-	2	2	1-18024-0	SCR, BTN SKT HD CAP (M4 X 20.0)	31	
-	2	2	18024-8	SCR, BTN SKT HD CAP (M4 X 12.0)	29	
-	1	1	3-690451-2	SPACER, STRIPPER	28	
-	1	1	240639-1	STRIPPER (MACHINING)	27	
-	2	2	1320906-1	STUD, THREADED	25	
-	1	1	1320995-1	PLATE, STRIP GUIDE	24	
-	1	1	240825-1	PLATE, STRIP HOLD DOWN	23	
-	2	2	4-22281-1	SPRING, DRAG	22	
-	1	1	1338665-1	DRAG	20	
-	2	2	1338663-2	GUIDE, LOWER STRIP	18	
-	4	4	1-18024-8	SCR, BTN SKT HD CAP (M6 X 12.0)	17	
-	1	1	1338708-1	SPACER, SLUG BLADE	16	
-	1	1	690481-2	SPACER, HOLD DOWN	13	
-	1	1	23846-1	SPRING, DIE	12	
-	1	1	240644-1	PLATE, REAR SHEAR	11	
-	-	-	-	-	10	
-	1	1	690482-4	PLATE, FRONT SHEAR	9	
-	1	2	2-1633384-3	ANVIL, COMBINATION	8	
-	1	1	690474-4	BLADE, SLUG	7	
-	1	1	455892-4	HOLD DOWN, TERMINAL	6	
-	1	1	3-240641-6	SPACER	5	
-	1	1	1-238009-4	BLOCK, FL CRIMPER SPACER	4	
-	1	2	4-456134-8	CRIMPER, INSULATION F PREMIUM	3	
-	1	1	455888-6	SPACER, CRIMPER	2	
-	1	2	6-456402-5	CRIMPER, WIRE PREMIUM	1	
-	77	71	-1	PART NO	DESCRIPTION	ITEM NO

THIS DRAWING IS UNPUBLISHED. RELEASED FOR PUBLICATION. THIS IS SUBJECT TO CHANGE AND THE USER SHOULD CONSULT THE ORGANIZATION SOURCE OF CONTACT FOR THE LATEST REVISION.

APPROVED: M. CLIFFORD, DATE: 21AUG2007, NAME: FINE ADJUST END FEED HDI APPLICATOR

TYCO ELECTRONICS, Tyco Electronics, Harrisburg, PA 17105-3608

DIMENSIONS: INCHES, TOLERANCES UNLESS OTHERWISE SPECIFIED: 0 PLC ±, 1 PLC ±0.1, 2 PLC ±0.01, 3 PLC ±0.001, 4 PLC ±0.0001, ANGLES ±.

MATERIAL: FINISH: WEIGHT: A1 00779 C=1529256

CUSTOMER DRAWING, SCALE: 3:5, SHEET 1 OF 1, REV B

CUSTOMER ACCESSIBLE PRODUCTION DRAWING