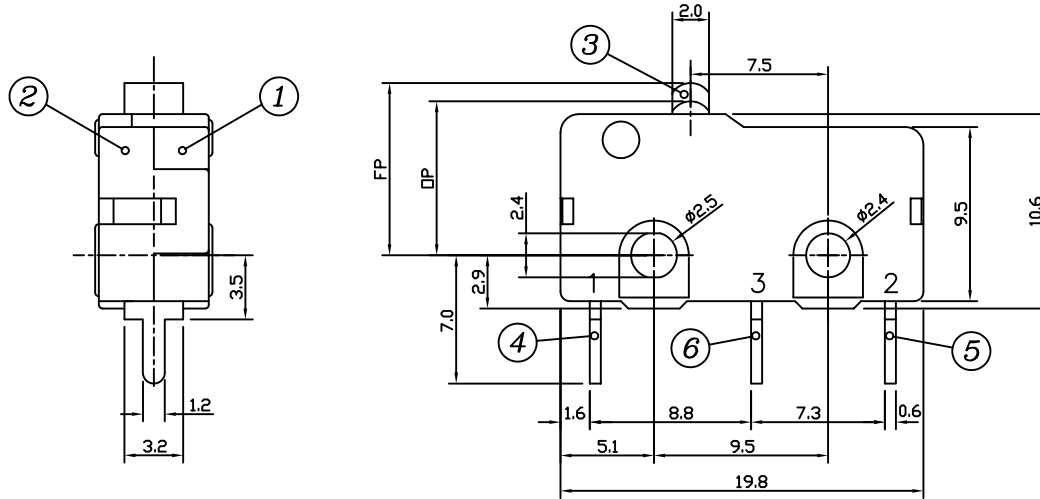
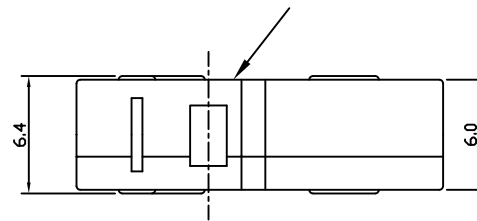


THIS INFORMATION IS CONFIDENTIAL AND PROPRIETARY TO TYCO ELECTRONICS AUSTRIA GMBH AND ITS AFFILIATES. IT MAY NOT BE DISCLOSED TO ANYONE OTHER THAN TYCO ELECTRONICS PERSONNEL WITHOUT WRITTEN AUTHORIZATION FROM TYCO ELECTRONICS AUSTRIA.

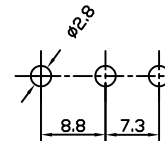


△ 1-1478601-1

TE LOGO AND PART NUMBER MARKED IN THIS AREA



Hole Pattern for PCB

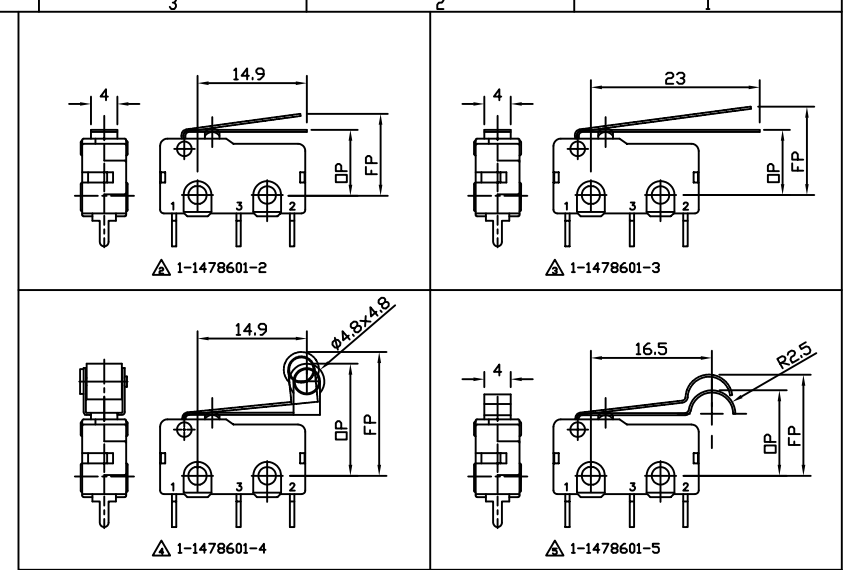


NOTES:

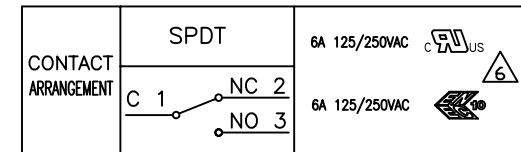
- FOR TECHNICAL DATA REFER TO YOUR LOCAL TYCO ELECTRONICS SALES OFFICE.
- ALL DIMENSIONS ARE NOMINAL FOR REFERENCE ONLY UNLESS OTHERWISE STATED.
- ALL DIMENSIONS ARE COMMON TO THE MAIN BODY. VARIATIONS ARE IN THE OPERATING LEVERS.
- OP: OPERATING POSITION  
FP: FREE POSITION

△ VDE/ENEC APPROVAL IN PROGRESS

| TE SALES PART No. | TE PART NO  | DESCRIPTION              | CHARACTERISTICS |                        |                   |                       |                    |                              | △ |
|-------------------|-------------|--------------------------|-----------------|------------------------|-------------------|-----------------------|--------------------|------------------------------|---|
|                   |             |                          | Operating Force | Releasing Force<br>min | Pre Travel<br>max | Operating<br>Position | Over Travel<br>min | Movement Differential<br>max |   |
| SP6DTBOLE         | 1-1478601-1 | Microswitch, Pin Plunger | 160 ±30 g       | 35 g                   | 0,6 mm            | 8,4 ±0,3 mm           | 0,5 mm             | 0,2 mm                       | △ |
| SP6DTBNLE         | 1-1478601-2 | Microswitch, Norm Lever  | 45 ±15 g        | 8 g                    | 3,0 mm            | 9,4 ±1,0 mm           | 1,0 mm             | 1,0 mm                       | △ |
| SP6DTBLLE         | 1-1478601-3 | Microswitch, Long Lever  | 25 ±10 g        | 5 g                    | 3,7 mm            | 10,0 ±1,5 mm          | 1,5 mm             | 1,5 mm                       | △ |
| SP6DTBNRE         | 1-1478601-4 | Microswitch, Norm Roller | 40 ±15 g        | 8 g                    | 2,5 mm            | 15,0 ±0,8 mm          | 1,0 mm             | 1,0 mm                       | △ |
| SP6DTBSME         | 1-1478601-5 | Microswitch, Simu Roller | 45 ±15 g        | 10 g                   | 2,6 mm            | 10,8 ±0,8 mm          | 1,0 mm             | 1,0 mm                       | △ |



| SPECIFICATIONS              |   |
|-----------------------------|---|
| Rating                      | 6A 125/250V AC                            |
| Contact Resistance          | 50 mΩ max.                                |
| Insulation Resistance       | 100 MΩ min. DC500V                        |
| Dielectric Strength         | 1000V AC 1 minute                         |
| Mechanical Life             | 1.000.000 cycles                          |
| Electrical Life             | 50.000 cycles<br>@6A 250V, resistive load |
| Operating Temperature Range | -40°C to +125°C RH 85% max.               |
| Soldering Temperature       | 260 ± 5°C 3sec                            |



| 7        | CONTACT    | Ag ALLOY            |                      |
|----------|------------|---------------------|----------------------|
| 6        | TERMINAL   | BRASS SILVER PLATED |                      |
| 5        | TERMINAL   | BRASS SILVER PLATED |                      |
| 4        | TERMINAL   | BRASS SILVER PLATED |                      |
| 3        | BUTTON     | PBT RESIN           | BLACK                |
| 2        | COVER      | PBT RESIN           | GREY                 |
| 1        | BASE       | PBT RESIN           | GREY                 |
| PART NO: | PART NAME: | MATERIAL/SURFACE:   | OPTIONAL DESCRIPTION |

| PART LIST  |   | DIMENSIONS: mm            |                      |
|--|---|---------------------------|----------------------|
| test dimen / Prüfmaß                                 | auxiliary dimen / Hilfsmaß ( )                          | theor. dimen / theor. Maß |                      |
| production control dimen / Fertigungskontrollmaß ( ) | dimen for measure. technology / messtechn. rel. Maß ( ) |                           |                      |
| DEPARTMENT   | D/E / R/SF  |                           |                      |
| DRAWER   | 27-03-08(SA008712)                                      |                           |                      |
| T  | 21-04-09  | VEIH                      | TOLERANCES SPECIFIED |
| ECR-NO:  | DATE  | NAME                      | INFO                 |
| DATE   | DATE  | DATE                      | DATE                 |

TOLERANCES UNLESS OTHERWISE SPECIFIED  
 x +/-0,5mm  
 .xx +/-0,2mm  
 .xxx +/-0,1mm

SCALE: NAME: MICRO SWITCH 6A 160g RANGE PCB TERMINAL

REV. NO: C-1478601

OPTIONAL NO:

REPLACEMENT FOR: DWG LDC NO: IF SHEET 1 OF 1 REVISION T A 2