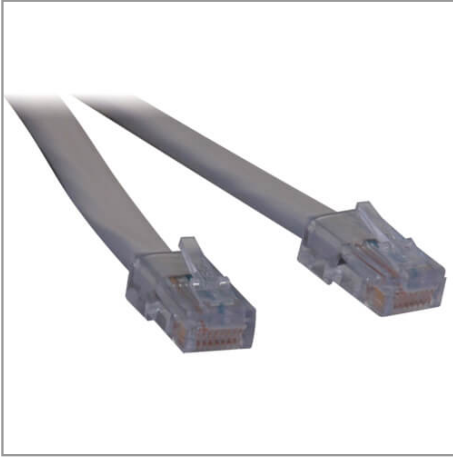


T1 Shielded RJ48C Crossover Cable (RJ45 M/M), 5 ft. (1.52 m) TAA

MODEL NUMBER: N266-005



Highlights

- 22AWG, 100ohm T1 Rated Cross-over Cable
- Connects your T1 CSU/DSU
- Meets ANSI T1.403 Cabling Requirement
- Compliant with the Federal Trade Agreements Act (TAA) for GSA Schedule purchases

Package Includes

5-ft. (1.52 m) T1 Cross-over Shielded RJ48C Patch Cable

Description

These T1, RJ45-RJ45 (RJ48C) cross-over Ethernet cables are constructed with premium Quabbin 9720, T1 certified cable. Two individually shielded, 22 AWG, 100 ohm pairs maximize the performance of your expensive T1 circuits and equipment. Beware of generic T1 Ethernet cables made with inexpensive Cat5 unshielded Ethernet cable. The American National Standards Institute (ANSI) states in ANSI T1.403 that T1 cable be constructed of two balanced pairs, 22 AWG Solid conductor, 100 ohm impedance, with a loss budget of 5.5 db. Cross-over wiring configuration available in 3-foot (0.9-meter), 5-foot (1.5-meter), 7-foot (2.1-meter) and 10-foot (3.1-meter) lengths. Custom lengths available. Consult your reseller. Also available in straight-through wiring configuration. See N265-Series T1 Ethernet cables.

Features

- T1, RJ45-RJ45 , (RJ48C) Cross-over Patch Cables are constructed with premium Quabbin 9720, T1 certified cable
- Two individually shielded, 22AWG, 100ohm pairs, maximize the performance of your expensive T1 circuits and equipment
- Cross-over wiring configuration available in 3-ft. (0.91 m), 5-ft. (1.52 m), 7-ft. (2.13 m), and 10-ft. (3.05 m) lengths
- Custom lengths available...consult your reseller
- Also available in Straight-through wiring configuration...see N265- Series T1 patch cables.

Specifications

OVERVIEW	
UPC Code	037332150356
Technology	T1
PHYSICAL	
Cable Jacket Color	Beige

Cable Jacket Rating	CMR
Cable Shielding	STP
Number of Conductors	4 Pair
Conductor Material	Solid Copper
Cable Length (ft.)	5
Cable Length (m)	1.52
Cable Length (in.)	60
Cable Length (cm)	152.4
Shipping Dimensions (hwd / in.)	12.00 x 10.00 x 0.50
Shipping Dimensions (hwd / cm)	30.48 x 25.40 x 1.27
Shipping Weight (lbs.)	0.19
Shipping Weight (kg)	0.09
CONNECTIONS	
Side A - Connector 1	RJ45 (MALE)
Side B - Connector 1	RJ45 (MALE)
Crossover Wiring	No
Connector Type	Crossover
Angled Connector	No
FEATURES & SPECIFICATIONS	
Antibacterial	No
IP68 Rated	No
Snagless Connector	No
STANDARDS & COMPLIANCE	
Product Compliance	Trade Agreements Act (TAA)
WARRANTY & SUPPORT	
Product Warranty Period (Worldwide)	Lifetime limited warranty