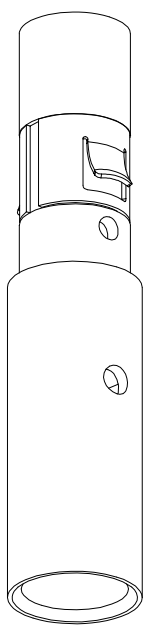
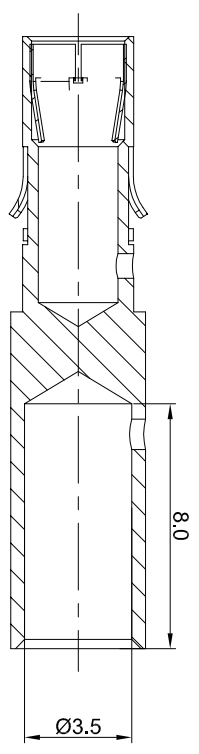
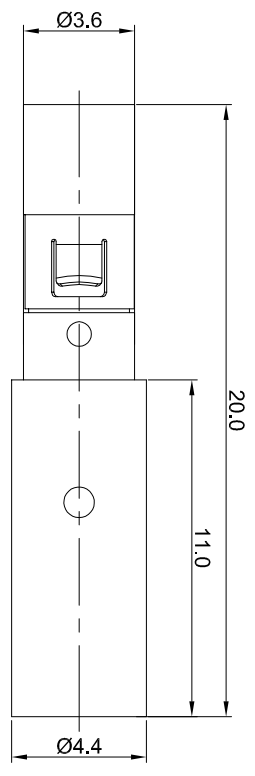


REVISIONS				
REV	ECO	DESCRIPTION	DATE	BY APPR
A1	-	FIRST RELEASE	May/27/2017	Tom TOMMY
A2	-	Modify the current rating	Jul,10,2017	White TOMMY



P/N	CONTACT PLATING(MATING AREA)
MS10B23T	TIN PLATING OVER NICKEL.
MS10B23S	SILVER PLATING OVER NICKEL.
MS10B23F	GOLD FLASH PLATING OVER NICKEL.
MS10B23G5	5µ" GOLD PLATING OVER NICKEL.
MS10B23G10	10µ" GOLD PLATING OVER NICKEL.
MS10B23G15	15µ" GOLD PLATING OVER NICKEL.
MS10B23G30	30µ" GOLD PLATING OVER NICKEL.

- NOTES : (UNLESS OTHERWISE SPECIFIED)
- MATERIAL :
 - CONTACT BODY : COPPER ALLOY.
 - POSITIONING CLIP : COPPER ALLOY.
 - SPECIFICATIONS :
 - CURRENT RATING : 35A(MAX).
 - TERMINATION TYPE : CRIMPING.
 - SUITABLE SOCKET : MP10B23xx.
 - ROHS COMPLIANT.
 - ALL DIMENSIONS ARE FOR REFERENCE USE ONLY.

QUANTITY	PART NUMBER	DESCRIPTION	ITEM
MATERIALS LIST			

UNLESS OTHERWISE SPECIFIED 1) All dimensions are in millimeters. 2) Tolerances are as follows: 1 Pt. DEC & 0.30 Fractions ±1/16 3 Pt. DEC & 0.08 Angles ±1° 3) Note reference =	SIGNATURES	DATE	SCALE: NONE
DRAWN: White	DATE: Jul,10,2017		
CHECKER:	ENGINEER:		
APPROVAL:			
CUSTOMER:			

PROCESS SPECIFICATIONS:	THIS DRAWING IS SUPPLEMENTARY TO THE DRAWING IT REFERS TO. ALL DIMENSIONS AND PERFORMANCE DATA ARE THE PROPERTY OF AMPHENOL CORPORATION. NO PARTS OF THIS DRAWING OR INFORMATION HEREIN ARE TO BE REPRODUCED OR TRANSMITTED IN ANY FORM OR BY ANY MEANS, ELECTRONIC OR MECHANICAL, INCLUDING PHOTOCOPYING, RECORDING, OR BY ANY INFORMATION STORAGE AND RETRIEVAL SYSTEM. ALL RIGHTS ARE RESERVED. AMPHENOL CORPORATION, ALL RIGHTS RESERVED.	SIZE: B	DWG NO: MS10B23xx	REVISION: A2
MATERIAL SPECIFICATIONS:				
PROCESS SPECIFICATIONS:				
NEXT ASST:				

Amphenol

Sine Systems - www.amphenol-sine.com
44724 Morley Drive
Clinton Township, MI 48036

ECO-MATE SOCKET CONTACT
MACHINE FEMALE CONTACT 2.5mm