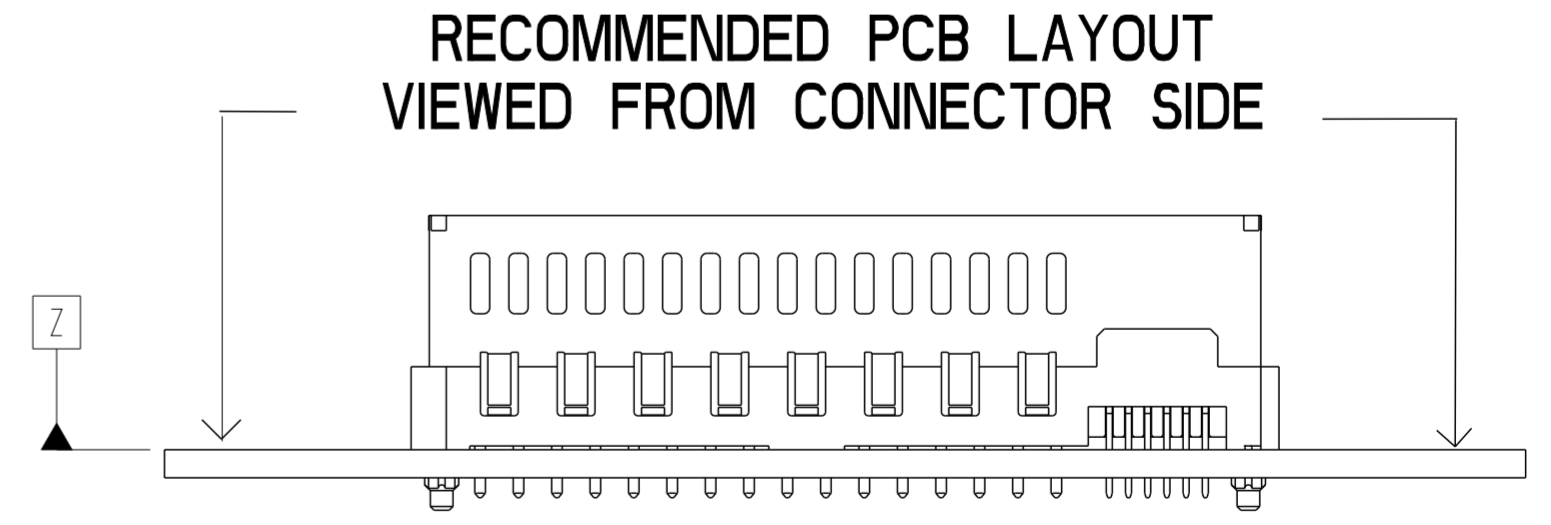
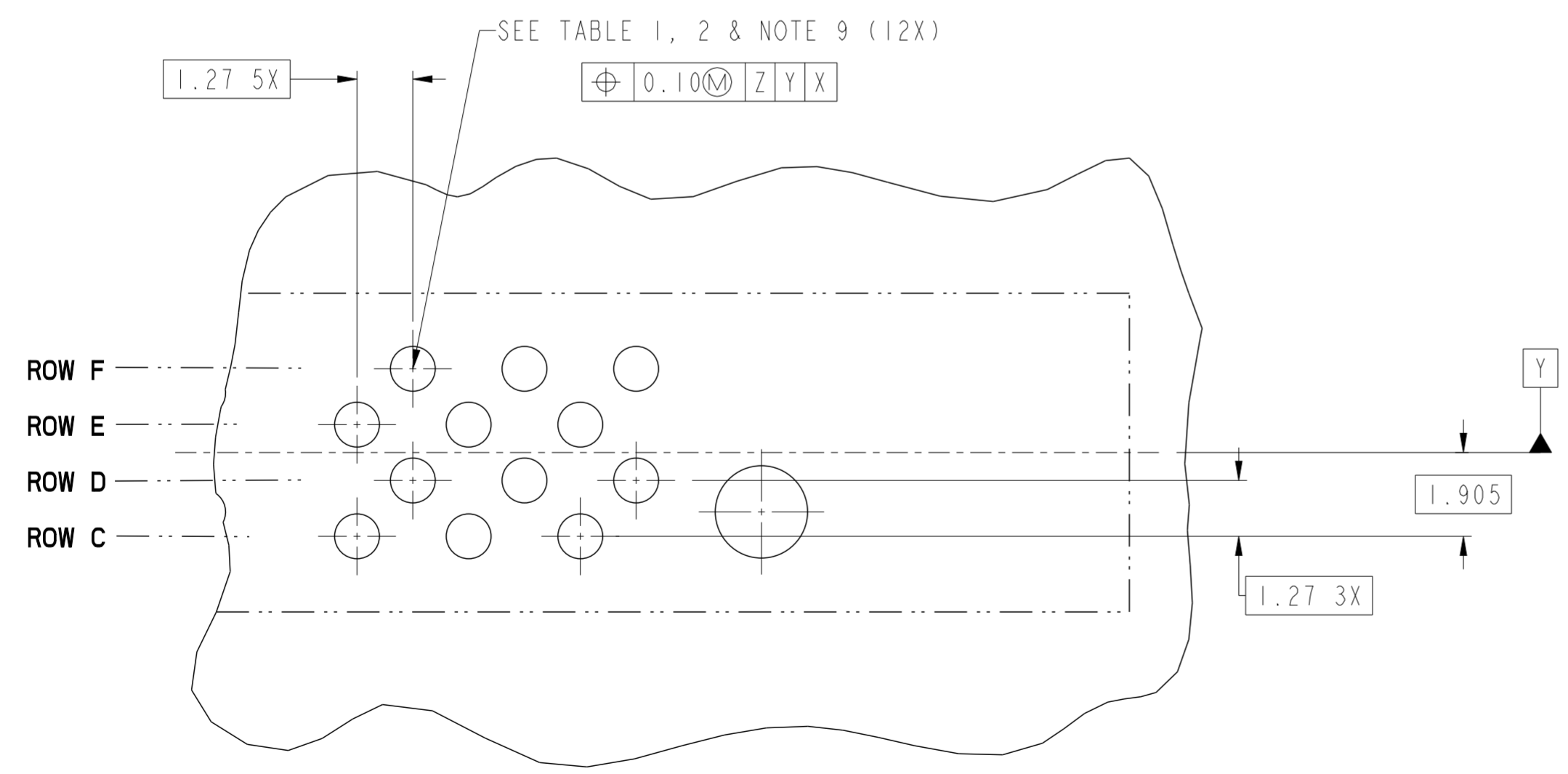
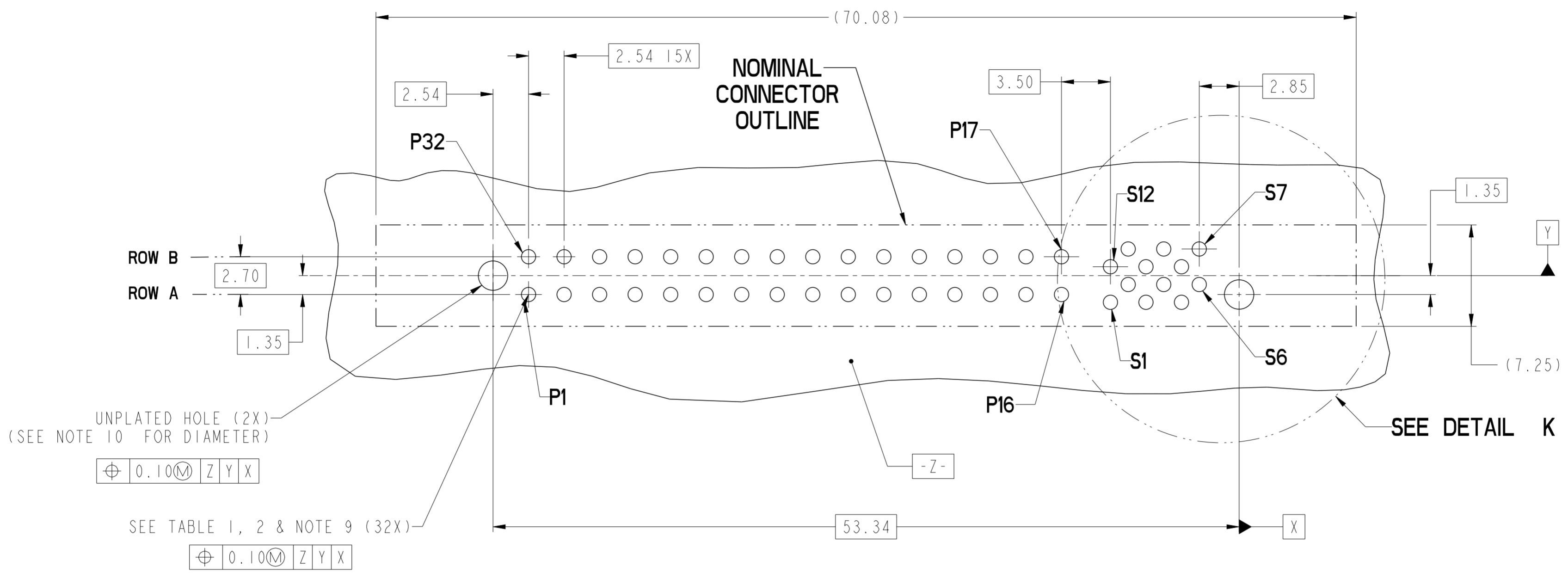


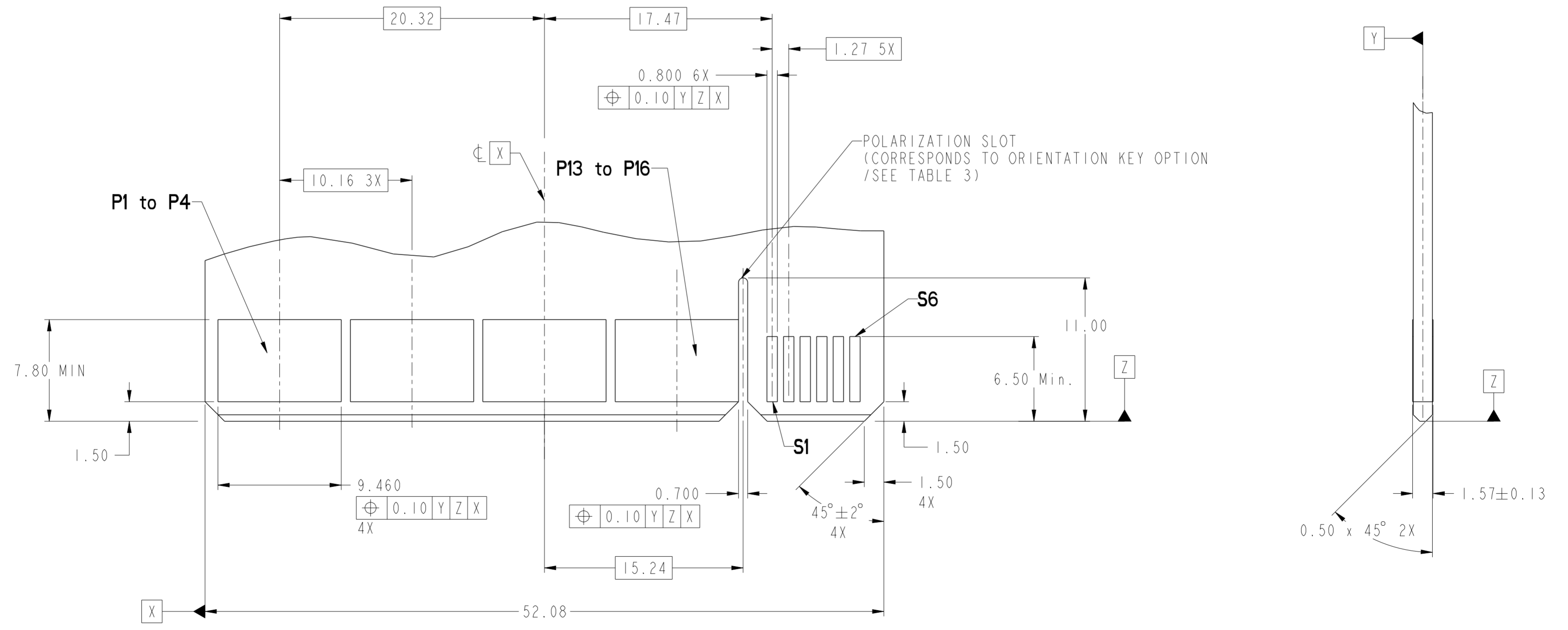
spec ref	-	dr	Wei-Long Zhang	2011/04/06	Amphenol Power Solutions A Division of Amphenol Corporation amphenol-hcc.com	MM	scale	4:1	size	A2	
tolerance std	ISO 406 ISO 1101	eng	Wei-Cheng Guo	2023/06/07		ec n no	ELX-DG-48406-1	rel level	Released	rev	C
surface	TOLERANCES UNLESS OTHERWISE SPECIFIED	r v w r	-	-		cat. no.	-	product family	CARD EDGE	Product - Customer Drw	sheet 1 of 4
		appr	Zheng-Pei-Min	2023/07/05	dig no	10117936					
		projection			title	VERT RECT (32P 12S)					
						HIGH POWER CARD EDGE					



spec ref	-	dr	Wei-Long Zhang	2011/04/06	Amphenol Power Solutions A Division of Amphenol Corporation amphenol-hcc.com	MM	scale	4:1	size	A2
tolerance std	ISO 406 ISO 1101	eng	Wei-Cheng Guo	2023/06/07		ec n no	ELX-DG-48406-1	rel level	Released	
surface	ISO 1302	fwvr	-	-		app r	Zheng, Pei-Min	2023/07/05	cat. no.	10117936
TOLERANCES UNLESS OTHERWISE SPECIFIED		linear	0.X	±0.30	projection	VERT RECT (32P 12S)	dig no	10117936	rev	C
			0.XX	±0.10	HIGH POWER CARD EDGE product family	Product - Customer Drw		sheet 2 of 4		
		angular	0°	±2°						

CONTACT TYPE	TOP LAYER DESCRIPTION	TABLE 1 (HPCE / SOLDER TAILS) PLATED THROUGH-HOLE REQUIREMENTS				
		DRILLED HOLE DIAMETER	COPPER THICKNESS	TIN-LEAD THICKNESS	TIN THICKNESS	FINISHED HOLE DIAMETER
POWER & SIGNAL	TIN-LEAD	1.10-1.16 (1.15 DRILL)	0.025 - 0.050	0.005 - 0.015	--	0.94 - 1.10
	IMMERSION TIN	1.10-1.16 (1.15 DRILL)	0.025 - 0.050	--	0.9 - 1.5um	0.94 - 1.10
	COPPER (SEE NOTE 8)	1.10-1.16 (1.15 DRILL)	0.025 - 0.050	--	--	0.94 - 1.10

CONTACT TYPE	TOP LAYER DESCRIPTION	TABLE 2 (HPCE / PRESS-FIT TAILS) PLATED THROUGH-HOLE REQUIREMENTS				
		DRILLED HOLE DIAMETER	COPPER THICKNESS	TIN-LEAD THICKNESS	TIN THICKNESS	FINISHED HOLE DIAMETER
POWER & SIGNAL	TIN-LEAD	0.81-0.86 (0.85 DRILL)	0.025 - 0.050	0.005 - 0.015	--	0.65 - 0.80
	IMMERSION TIN	0.81-0.86 (0.85 DRILL)	0.025 - 0.050	--	0.9 - 1.5um	0.70 - 0.80
	COPPER (SEE NOTE 8)	0.81-0.86 (0.85 DRILL)	0.025 - 0.050	--	--	0.70 - 0.80

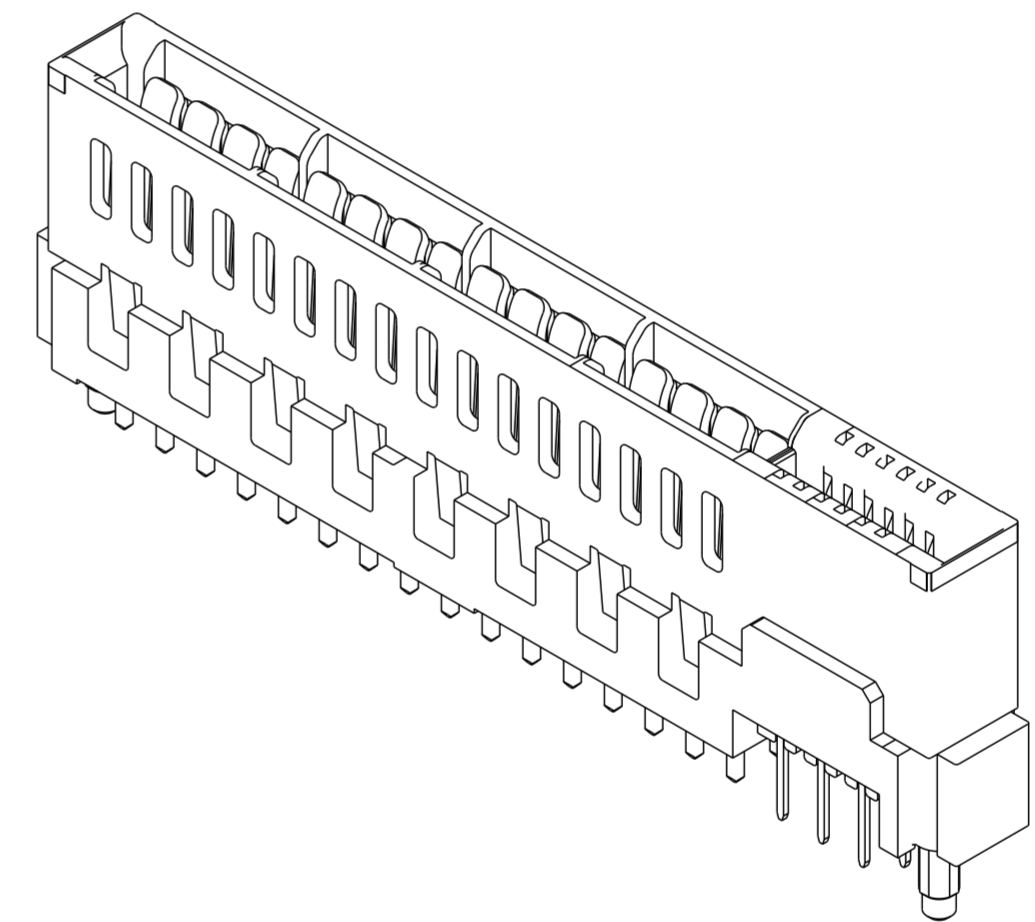


RECOMMENDED MATING BOARD FOOTPRINT

spec ref	-	dr	Wei-Long Zhang	2011/04/06	Amphenol Power Solutions A Division of Amphenol Corporation amphenol-hcc.com	MM	scale	4:1	size	A2
tolerance std	ISO 406 ISO 1101	eng	Wei-Cheng Guo	2023/06/07		ec n no	ELX-DG-48406-1	rel level	Released	
surface	ISO 1302	proj	Zheng-Pei-Min	2023/07/05		cat. no.	10117936	rev	C	
TOLERANCES UNLESS OTHERWISE SPECIFIED		linear	0.X	±0.30	title		VERT RECT (32P 12S)		Product - Customer Drw	
		linear	0.XX	±0.10	projection		HIGH POWER CARD EDGE		sheet 3 of 4	
		linear	0.XXX	±0.05	product family					
		angular	0°	±2°	product family					

HPCE PART NUMBER (TABLE 3)

PART NUMBER	TAIL TYPE	ORIENTATION KEY	DIM "A" TYPICAL TAIL LENGTH	DIM "B" TYPICAL TAIL LENGTH	DIM "C" RECOMMENDED BOARD THICKNESS
10117936-001LF	SOLDER	YES	3.17 ±0.25	3.17 ±0.25	1.59 - 2.38
10117936-002LF	SOLDER	NO			
10117936-003	PRESS-FIT	YES	3.17 ±0.25	3.17 ±0.25	1.6 MIN
10117936-003LF	PRESS-FIT	YES			
10117936-004	PRESS-FIT	NO			
10117936-004LF	PRESS-FIT	NO			
10117936-005LF	SOLDER	YES	4.05 ±0.25	3.75 ±0.25	3.20 ±0.18
10117936-006LF	SOLDER	NO			



NOTES:

1. CONNECTOR MATERIALS:
 HOUSING: HIGH TEMPERATURE THERMAL PLASTIC, BLACK
 UL 94V-0 COMPLIANT
 CONTACTS: HIGH PERFORMANCE COPPER ALLOY.
2. CONTACT FINISH REF. GS-12-604 SECTION 5.2.
3. PRODUCT SPECIFICATION: GS-12-604.
4. APPLICATION SPECIFICATION: GS-20-128.
5. PRODUCT MARKING (FCI - PART NUMBER & DATE CODE) ON HOUSING IN AREA SHOWN.
6. PACKAGING MEETS FCI SPECIFICATION GS-14-937.
7. HOUSING COMPONENT WILL WITHSTAND EXPOSURE TO 260°C PEAK TEMPERATURE FOR 60 SECONDS IN A CONVECTION, INFRA-RED, OR VAPOR PHASE REFLOW OVEN.
8. COPPER PLATING THICKNESS IN CENTER OF VIA-HOLE CAN BE NO MORE THAN 0.003 LESS THAN OTHER AREAS.
9. ALL HOLE SIZES ARE FINISHED HOLE SIZES.
10. MOUNTING HOLES ARE UNPLATED
 Ø 2.40 +/- 0.1 FOR PRESS-FIT TAILS
 Ø 2.10 +/- 0.1 FOR SOLDER TAILS

spec ref	-	dr	Wei-Long Zhang	2011/04/06	Amphenol Power Solutions A Division of Amphenol Corporation amphenol-hcc.com	MM	scale	4:1	size	A2
tolerance std	ISO 406 ISO 1101	eng	Wei-Cheng Guo	2023/06/07		ec n no	ELX-DG-48406-1	rel level	Released	
surface	ISO 1302	fwvr	-	-		app r	Zheng, Pei-Min	2023/07/05	dig no	10117936
		linear	0.X	±0.30	projection	VERT RECT (32P 12S)	cat. no.	-	rev	C
		angular	0°	±2°	product family	CARD EDGE	Product - Customer Drw	sheet 4 of 4		

PDS: Rev :C

STATUS:Released

Printed: Jul 05, 2023

Amphenol Power Solutions

© 2021 Amphenol Corporation