

# UV Sensor Module

## GUVA-T21GH



### Features

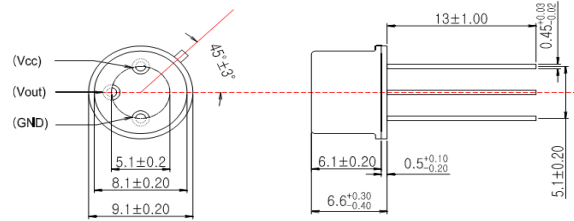
- Single Supply Voltage Operation
- Amplified Voltage Output
- High Sensitivity and Good Solar Blindness
- Small and Compact Size



### Applications

UV-A Lamp Monitoring

### Outline Diagrams and Dimensions(unit:mm)



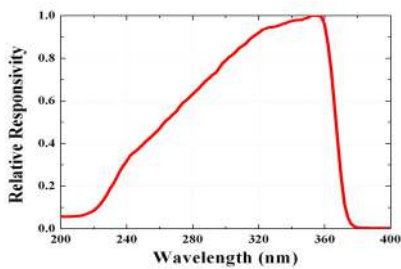
### Absolute Maximum Ratings

Parameter	Symbol	Min.	Max.	Unit	Remark
Storage Temperature	$T_{st}$	-40	90	$^{\circ}C$	
Operating Temperature	$T_{op}$	-30	85	$^{\circ}C$	
Supply Voltage	$V_{cc}$		5.5	V	
Soldering Temperature	$T_{sol}$		260	$^{\circ}C$	within 10 sec.

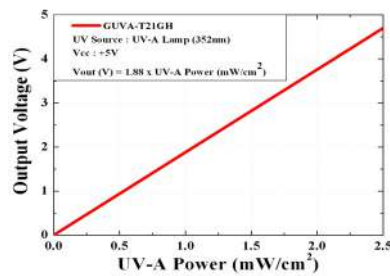
### Characteristics (at 25 $^{\circ}C$ )

Parameter	Symbol	Min.	Typ.	Max.	Unit	Remark
Supply Voltage	$V_{cc}$	1.8		5.5	V	DC
Supply Current	$I_Q$		50		$\mu A$	
Responsivity	$R_p$		1.8		mV/nW	at 350 nm
Spectral Detection Range	$\lambda$	220		370	nm	10% of $R_p$
Output Voltage	$V_{out}$		1.88		V	$1 \text{ mW/cm}^2$
Offset Voltage	$V_{off}$		0.01		V	
Detection Power Range	P	0		2.7	$\text{mW/cm}^2$	$V_{cc}=5V$
Rising Time	$T_r$		3		ms	

### Responsivity Curve



### Output Voltage along UV Power



**Caution** ESD can damage the device hence please avoid ESD.