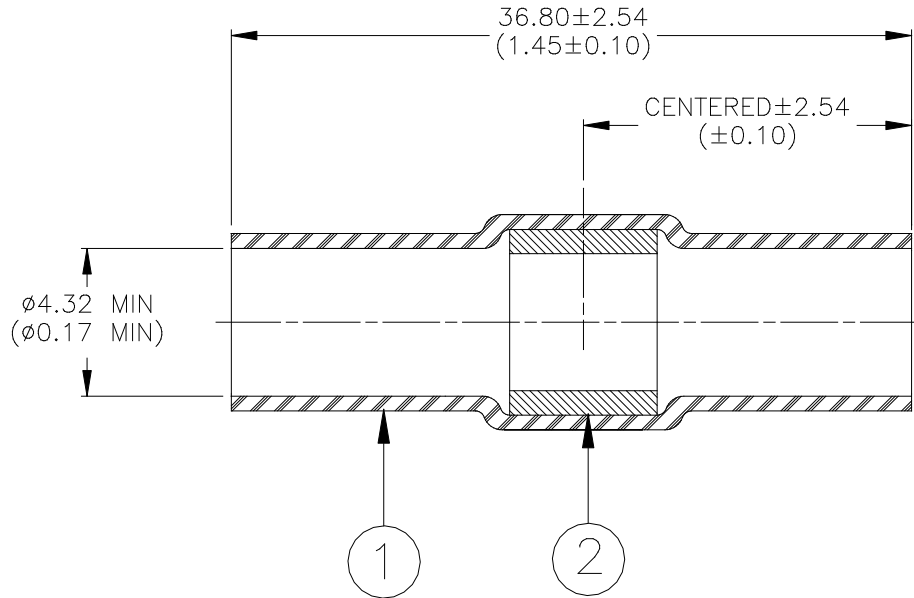


## CUSTOMER DRAWING




### MATERIALS

1. INSULATION SLEEVE: Heat-shrinkable, transparent blue, radiation cross-linked modified polyvinylidene fluoride.
2. SOLDER PREFORM WITH FLUX:  
 SOLDER: TYPE Sn63 per ANSI J-STD-006.  
 FLUX: TYPE ROM1 per ANSI-J-STD-004.

### APPLICATION

1. This part is designed to make a non-sealed in-line splice in conductors.  
 Splice Criteria:  
 Conductor Type: Bare or tin plated copper.  
 Circular Mil Range: 4,800 to 9,000.  
 Insulation Diameter: 2.41 - 4.32 (0.095 to 0.170).
2. Wires are to be stripped 16.5 - 19.1 (0.650 to 0.750) and overlapped under the solder preform.
3. Part may be installed with TE Connectivity/Raychem hot air or infrared heaters.
4. Part will meet requirements of Raychem Specification RT-1404.

		<b>Raychem DEVICES</b>		TITLE: <b>SOLDERSLEEVE WIRE SPLICE, IN-LINE, NON SEALED *</b>			
Unless otherwise specified dimensions are in millimeters. [Inches dimensions are shown in brackets]				DOCUMENT NO.: <b>D-110-0101</b>			
TOLERANCES: 0.00 N/A 0.0 N/A 0 N/A	ANGLES: N/A  ROUGHNESS IN MICRON	TE Connectivity reserves the right to amend this drawing at any time. Users should evaluate the suitability of the product for their application.		Rev:  2		DATE:  04-May-2020	
PREPARED BY: M.FORONDA	DATE: 06-July-00	ECO NUMBER: ECO-20-006205	CAGE CODE : 06090	SCALE: NTS	SIZE: A	SHEET: 1 of 1	

© 2020 TE Connectivity Ltd. Family of Companies. All Rights Reserved.

If this document is printed it becomes uncontrolled. Check for the latest revision.

\*TE Connectivity, TE connectivity (logo), Raychem, SolderSleeve are trademarks