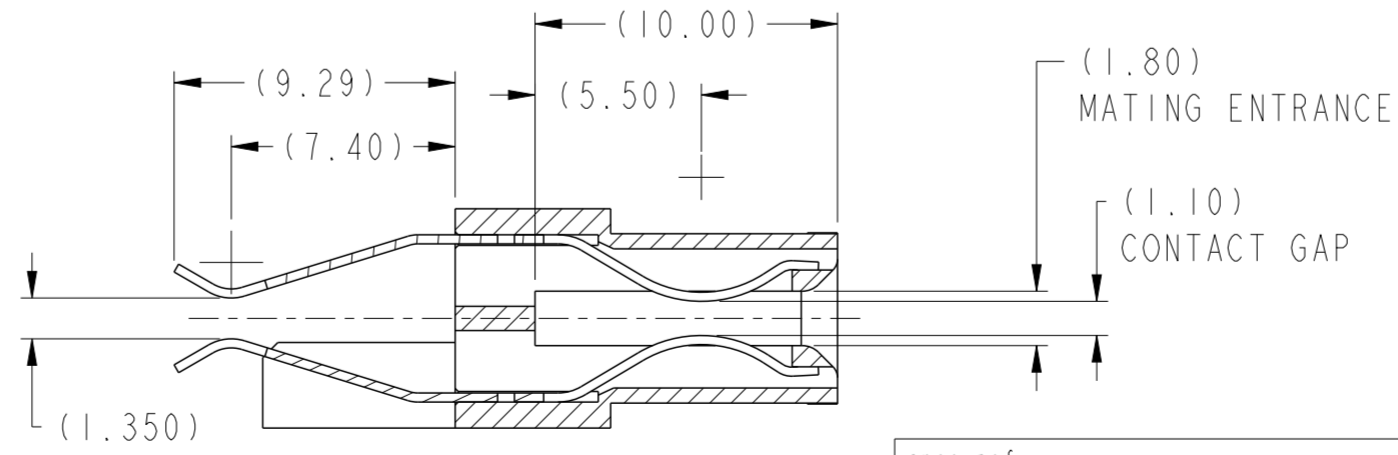
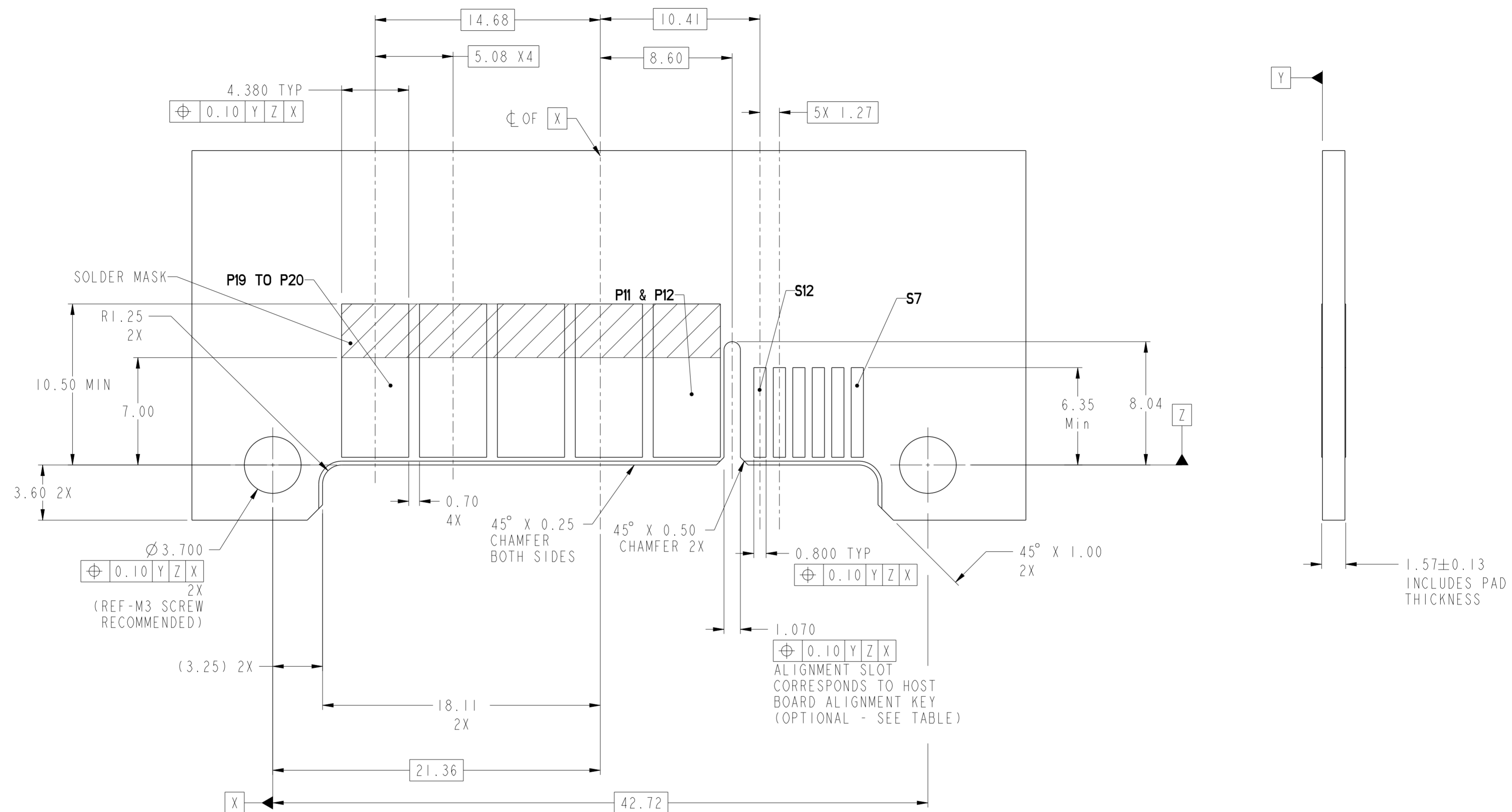


SECTION C-C

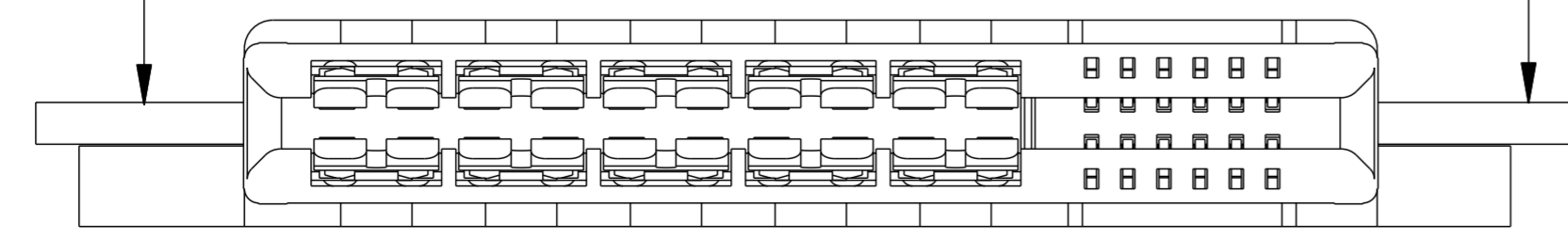


SECTION D-D

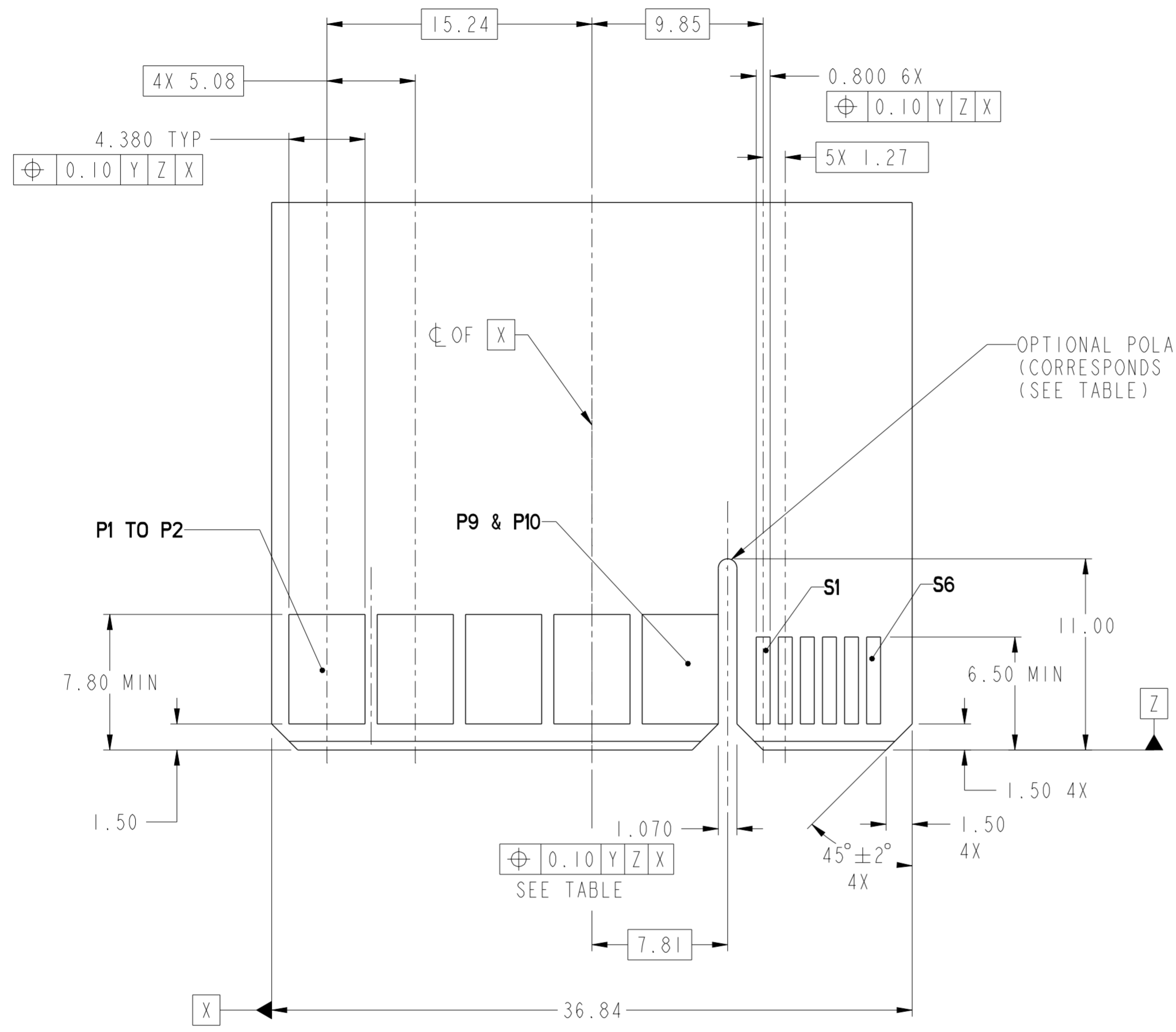
spec ref	-	dr	Wei-Long Zhang	2010/12/20	projection	MM	size	A2	scale	4:1	
tolerance std	-	eng	Sunny2 Liu	2016/05/06			ecn no	ELX-DG-24036-1	rel level	Released	
		chr	Terris Liu	2016/05/20							
		appr	Pai-Ming Zheng	2016/05/24	product family	CARD EDGE	rel level	Released			
surface	linear	0.X	±0.3		<b>Amphenol FCI</b> HPCE-STRADDLE MT (20P-12S) (RECEPTACLE)	title HPCE-STRADDLE MT (20P-12S) (RECEPTACLE)	dwg no 10116809	rev D	cat. no. -	Product - Customer Drw	sheet 1 of 4
		0.XX	±0.1								
		0.XXX	±0.05								
	angular	0°	±0°								



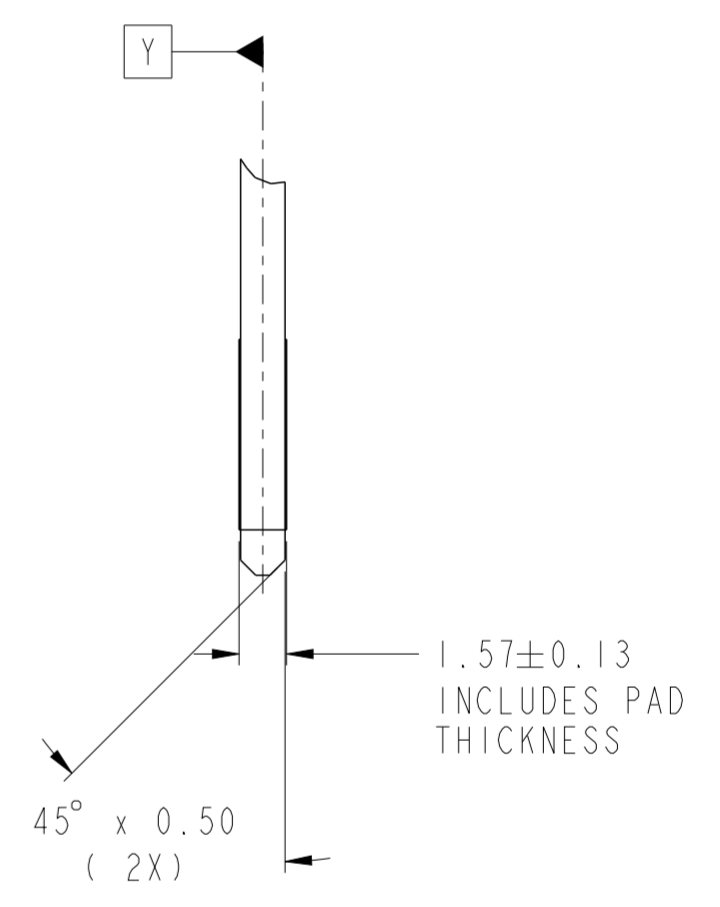
**RECOMMENDED HOST BOARD LAYOUT  
AS VIEWED**



spec ref	-	dr	Wei-Long Zhang	2010/12/20	projection	MM	size	A2	scale	2:1	
tolerance std	TOLERANCES UNLESS OTHERWISE SPECIFIED	eng	Sunny2 Liu	2016/05/06			ecn no	ELX-DG-24036-1			
		chr	Teris Liu	2016/05/20				rel level	Released		
		appr	Pai-Ming Zheng	2016/05/24	product family	-	rel level	Released			
surface	linear	0.X	±0.3		<b>HPCE-STRADDLE MT (20P-12S)</b> (RECEPTACLE)		dwg no 10116809	rev D			
		0.XX	±0.1		cat. no.	Product - Customer Drw			sheet 2 of 4		
	angular	0°	±°								



OPTIONAL POLARIZATION SLOT  
(CORRESPONDS TO ORIENTATION KEY OPTION  
(SEE TABLE))



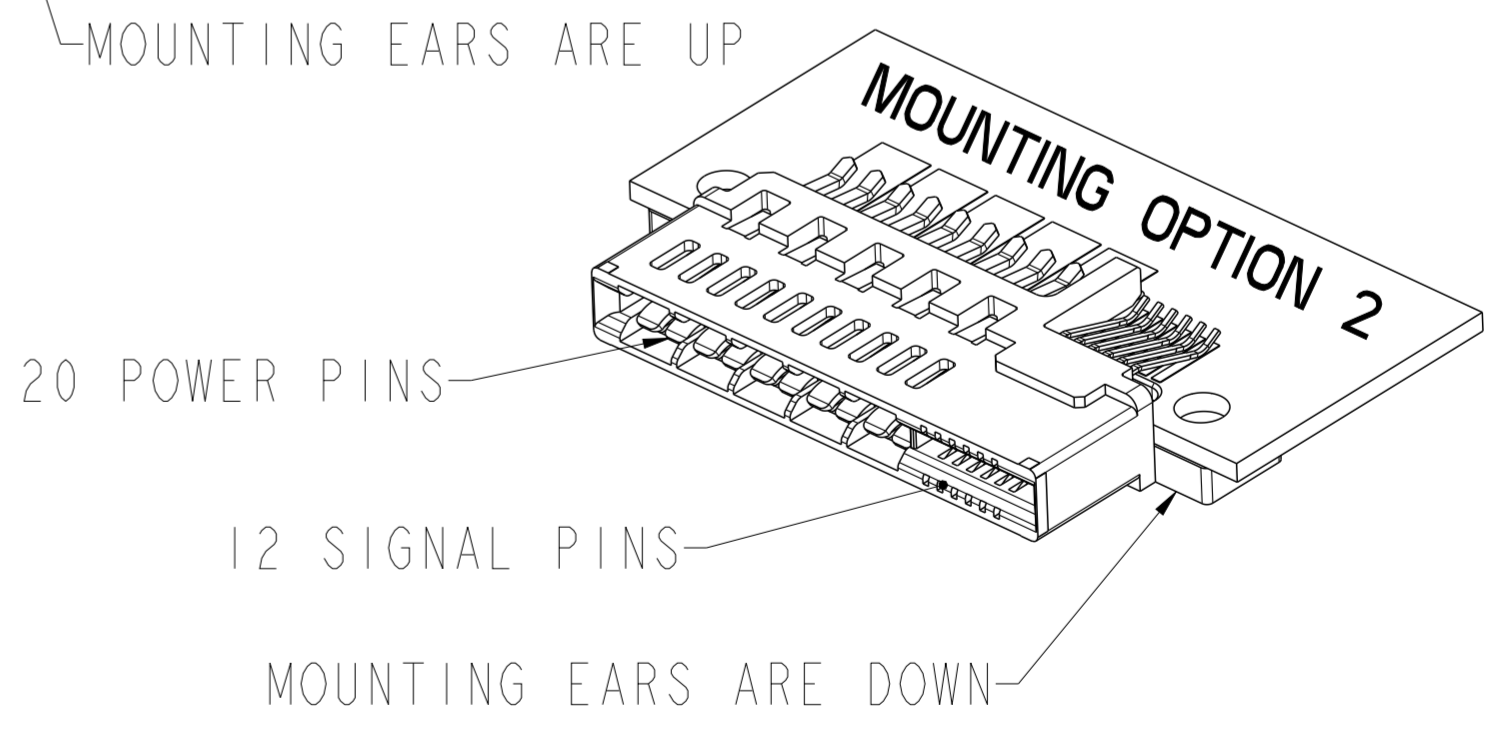
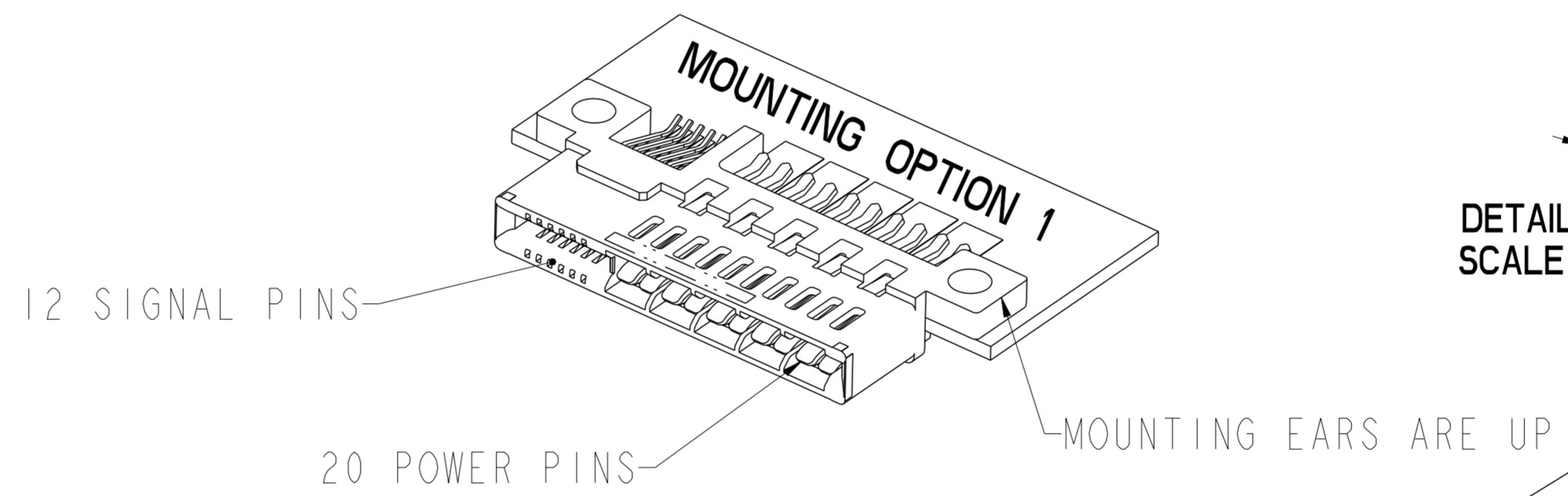
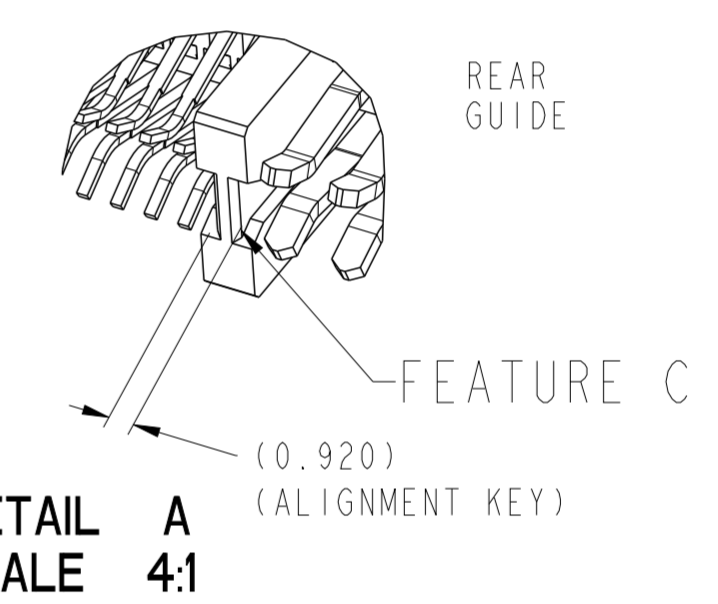
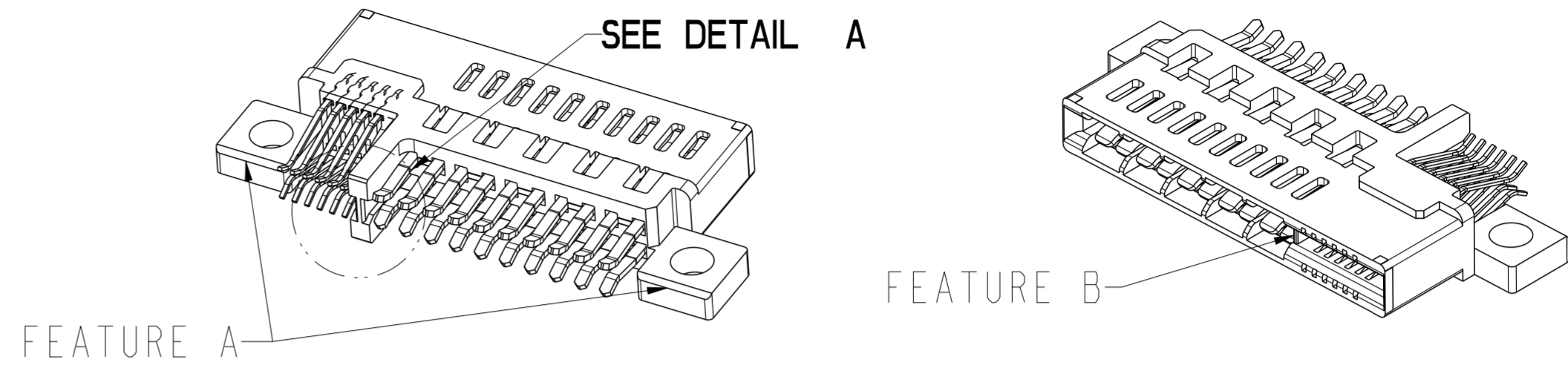
**RECOMMENDED MATING BOARD  
FOOTPRINT**

Amphenol  
FCi

© 2016 AFci

spec ref	-	dr	Wei-Long Zhang	2010/12/20	projection	MM	size	A2	scale	1:1
tolerance std	-	eng	Sunny2 Liu	2016/05/06			ecn no	ELX-DG-24036-1	rel level	Released
-	TOLERANCES UNLESS OTHERWISE SPECIFIED	chr	Terris Liu	2016/05/20						
-		appr	Pai-Ming Zheng	2016/05/24						
surface	linear	0.X	±0.3		title HPCE-STRADDLE MT (20P-12S) (RECEPTACLE)	dwg no 10116809	rev D	Product - Customer Drw		
-	angular	0°	±°					sheet 3 of 4		

PART NUMBER	FEATURE C HOST BOARD ALIGNMENT KEY (SEE NOTE 8)	FEATURE A MOUNTING EARS	FEATURE B FRONT POLARIZATION KEY
10116809-001LF	YES	YES	NO
10116809-002LF		YES	YES
10116809-003LF		NO	NO
10116809-004LF		NO	YES
10116809-005LF	NO	YES	NO
10116809-006LF		YES	YES
10116809-007LF		NO	NO
10116809-008LF		NO	YES



NOTES:

- CONNECTOR MATERIALS:  
HOUSING: HIGH TEMPERATURE THERMAL PLASTIC, BLACK  
UL 94V-0 COMPLIANT  
CONTACTS: HIGH PERFORMANCE COPPER ALLOY.
- CONTACT FINISH REF. GS-12-604 SECTION 5.2.
- PRODUCT SPECIFICATION: GS-12-604.
- APPLICATION SPECIFICATION: GS-20-128.
- PRODUCT MARKING ON HOUSING IN AREA SHOWN MEETS AFCI SPECIFICATION: GS-24-007.
- PACKAGING MEETS FCI SPECIFICATION GS-14-937.
- HOUSING COMPONENT WILL WITHSTAND EXPOSURE TO 260°C PEAK TEMPERATURE FOR 60 SECONDS IN A CONVECTION, INFRA-RED, OR VAPOR PHASE REFLOW OVEN.
- HOST BOARD ALIGNMENT KEY IS RECOMMENDED TO ENSURE PROPER ALIGNMENT OF SOLDER TAILS WITH HOST BOARD PADS.
- A SYMBOL  $\triangle$  WILL BE NEXT TO ANY DIMENSION, VIEW, OR NOTE WHICH HAS BEEN MODIFIED WITH THE CURRENT DRAWING REVISION.

spec ref	-	dr	Wei-Long Zhang	2010/12/20	projection	MM	size	A2	scale	4:1		
tolerance std	-	eng	Sunny2 Liu	2016/05/06			ecn no	ELX-DG-24036-1				
	TOLERANCES UNLESS OTHERWISE SPECIFIED	chr	Terris Liu	2016/05/20				rel level	Released			
		appr	Pai-Ming Zheng	2016/05/24				product family	CARD EDGE			
surface	linear	0.X	±0.3		<b>Amphenol FCI</b> TITLE HPCE-STRADDLE MT (20P-12S) (RECEPTACLE)	cat. no.	10116809	rev	D			
		0.XX	±0.1						Product - Customer Drw	sheet 4 of 4		
		0.XXX	±0.05									
	angular	0°	±°									

Amphenol FCI

© 2016 AFCI