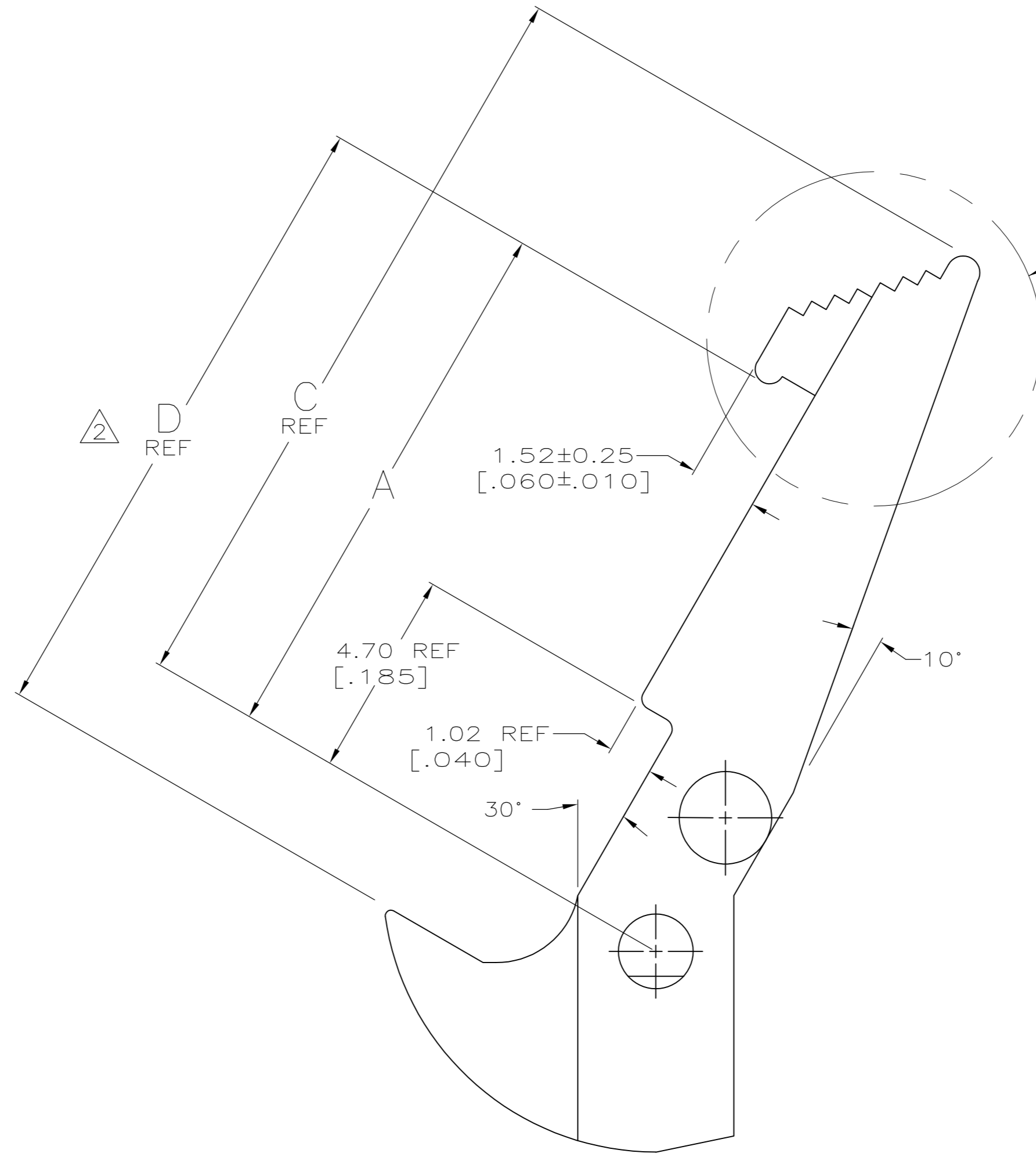
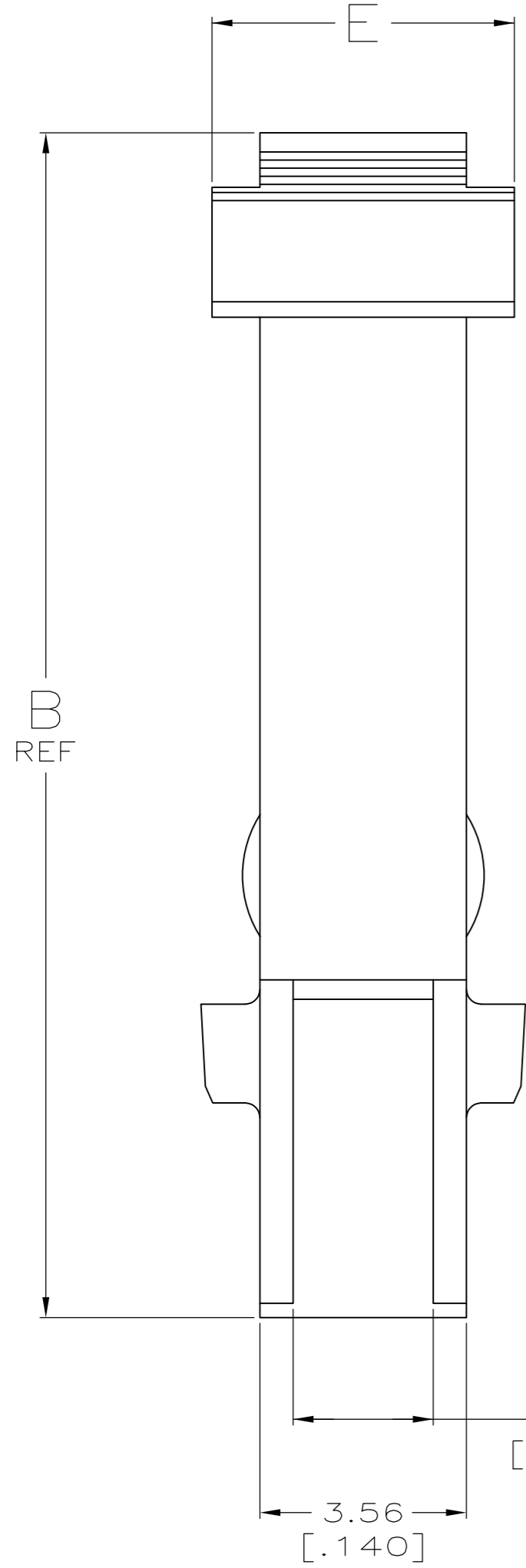
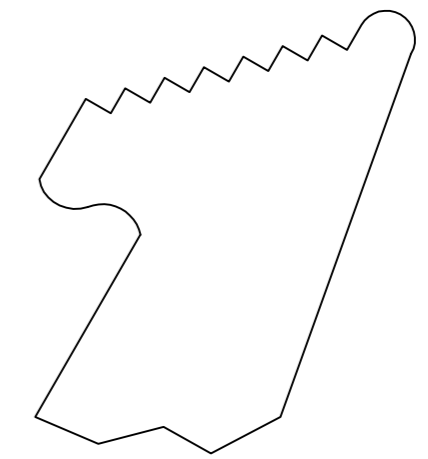


THIS DRAWING IS UNPUBLISHED. RELEASED FOR PUBLICATION
 © COPYRIGHT - By - ALL RIGHTS RESERVED.

LOC	DIST	REVISIONS			
P	LTR	DESCRIPTION	DATE	DWN	APVD
GP	00	H1 REVISED PER ECO-11-004835	11MAR11	RK	HMR



SEE DETAIL F
HANDLE AREA
SEE TABLE



DETAIL F
HANDLE AREA

OBSOLETE

COLOR	HANDLE AREA	E	D	C	B	A	PART NUMBER
LIGHT BLUE	AS SHOWN	5.21 [.205]	10.57 [.416]	13.18 [.519]	16.31 [.642]	8.38 [.330]	102312-5
BLUE	AS SHOWN	5.21 [.205]	10.57 [.416]	13.18 [.519]	16.31 [.642]	8.38 [.330]	102312-4
BLACK	PER DETAIL F	3.56 [.140] REF	8.26 [.325]	10.74 [.423]	13.36 [.526]	6.07 [.239]	③ 102312-3
BLACK	PER DETAIL F	3.56 [.140] REF	12.04 [.474]	14.53 [.572]	17.14 [.675]	9.86 [.388]	① 102312-2
BLACK	AS SHOWN	5.21 [.205]	10.57 [.416]	13.18 [.519]	16.31 [.642]	8.38 [.330]	102312-1

- ① TO BE USED WITH AMP-LATCH™ CONNECTOR WITH STANDARD COVER.
- ② MATING RECEPTACLE HEIGHT.
- ③ NOT RELEASED, NOT PRODUCTION TOOLED.
- ④ FLAME RETARDANT PBT. UL94V-0 RATED.

THIS DRAWING IS A CONTROLLED DOCUMENT.

DWN	D.GELTZ	07/08/92
CHK	R.STONE	7-10-92
APVD	-	-
PRODUCT SPEC	-	-
APPLICATION SPEC	-	-
WEIGHT	-	-
CUSTOMER DRAWING	SCALE 10:1	SHEET 1 OF 1

TE Connectivity
 LATCH, UNIVERSAL HEADER, AMP-LATCH

SIZE A2 CAGE CODE 00779 DRAWING NO C=102312 RESTRICTED TO -

REVISIONS: H1