

THIS DRAWING IS UNPUBLISHED. RELEASED FOR PUBLICATION
 © COPYRIGHT - By - ALL RIGHTS RESERVED.

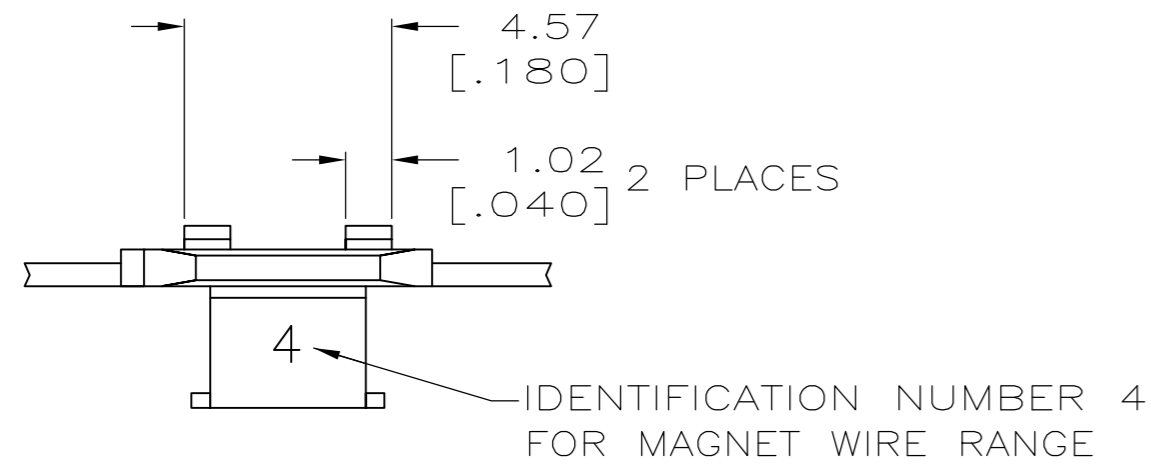
LOC		DIST		REVISIONS			
P	LTR	DESCRIPTION		DATE	DWN	APVD	
AF	50	J1	ECR-13-017177	05NOV13	PKS	RRP	

D

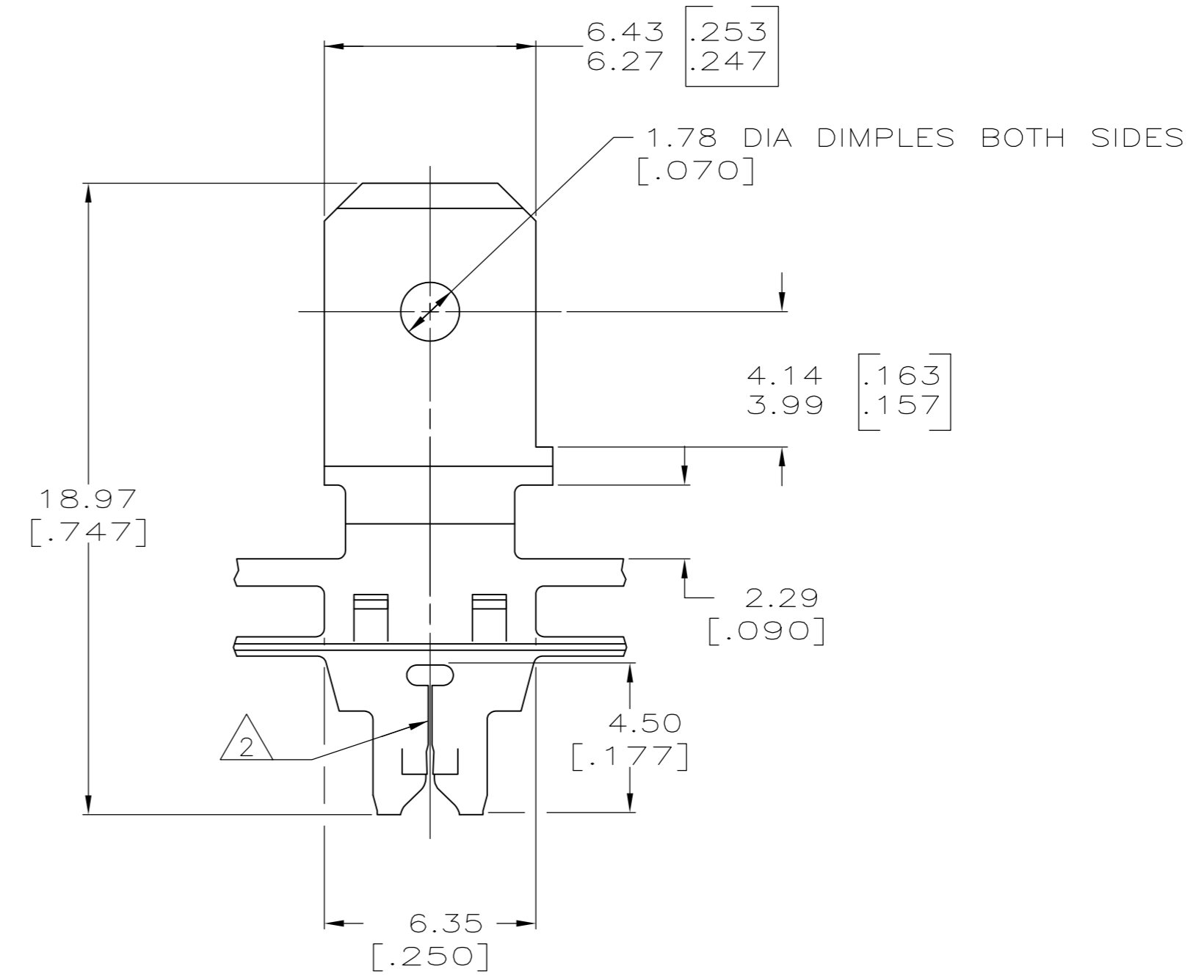
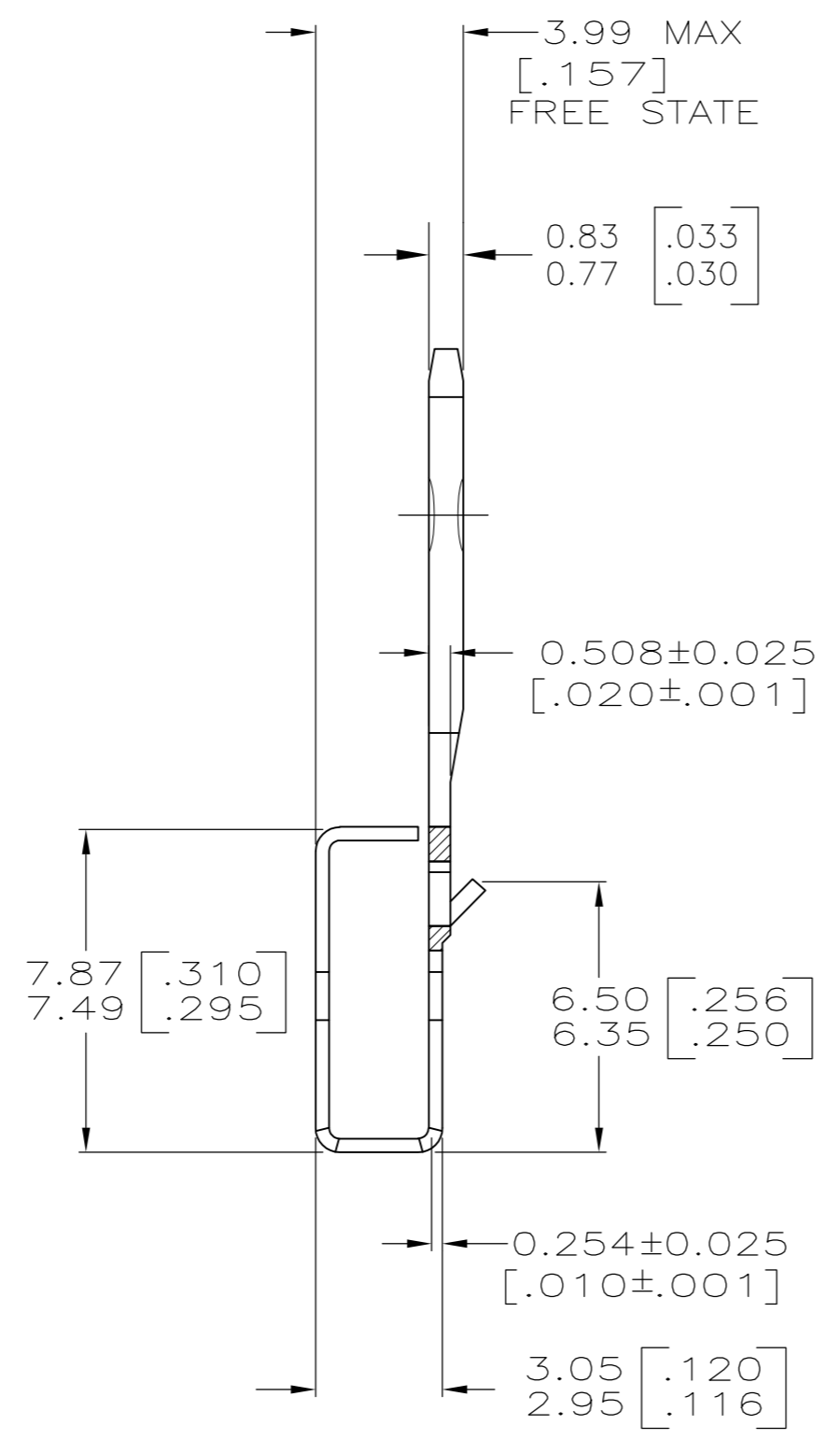
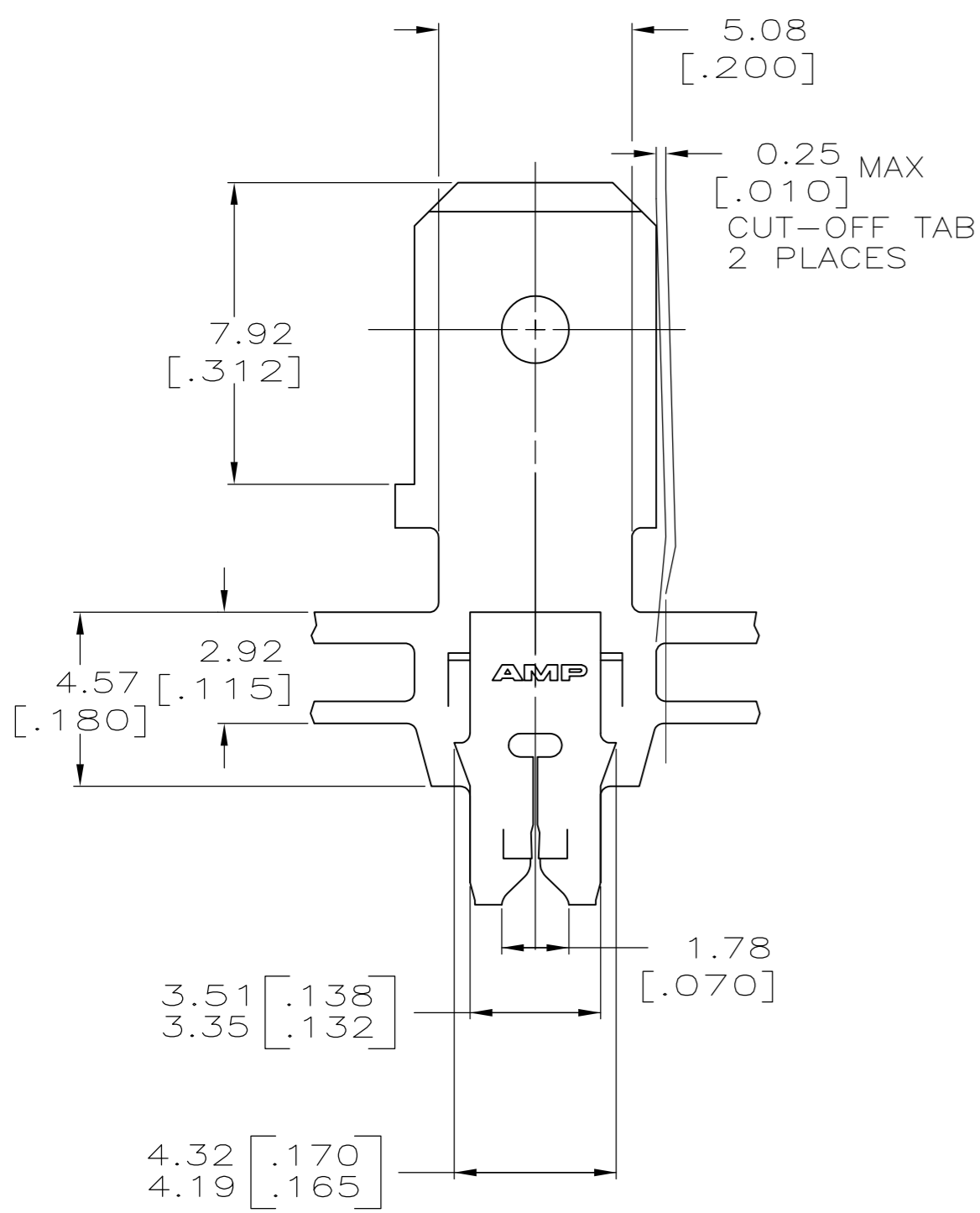
C

B

A



- 1 CONTINUOUS STRIP ON REELS WITH TERMINALS LOCATED ON 8.38±0.08 [.330±.003] CENTERS.
- 2 SLOT ACCEPTS 0.18-0.23mm [#33-#31] AWG COPPER MAGNET WIRE.
2 WIRES OF THE SAME SIZE MAX PER SLOT.
- 3 TIN PLATED



OBSOLETE	3	082 PRE-MILLED BRASS	63133-3
	-	4M PRE-MILLED BRASS	63133-2
	3	4M PRE-MILLED BRASS	63133-1
	FINISH	MATERIAL	PART NO

THIS DRAWING IS A CONTROLLED DOCUMENT.

DWN	12/AUG/94	MICHAEL S. FEHER	 TE Connectivity TAB, 6.35 [.250] FASTON™, 300 SERIES MAG-MATE™
CHK	15/AUG/94	JEFF R. RUTH	
APVD	15/AUG/94	NELSON E. NEFF	
NAME			
DIMENSIONS:	TOLERANCES UNLESS OTHERWISE SPECIFIED:	PRODUCT SPEC	108-2012
INCHES	0 PLC ± -	APPLICATION SPEC	114-2094
	1 PLC ± -	WEIGHT	-
	2 PLC ± 0.25 [.010]	SCALE	A2 00779 C=63133
	3 PLC ± -	CUSTOMER DRAWING	SCALE 6:1 SHEET 1 of 1 REV J1
	4 PLC ± -		
	ANGLES ± -		
MATERIAL	FINISH		
SEE TABLE	SEE TABLE		

63133

A