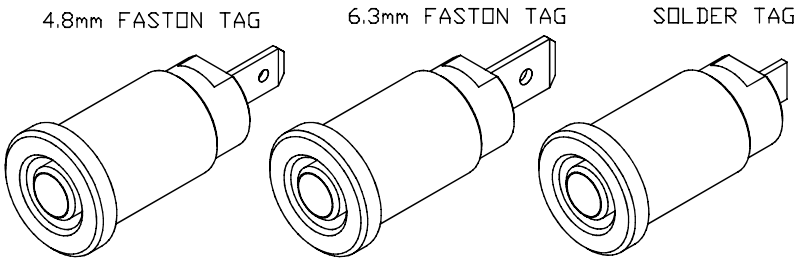
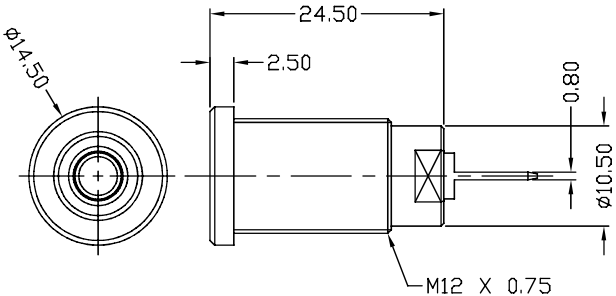


CLIFF

4mm PANEL SOCKET S16N



FCR73575B
S16N/4.8 BLK WNW



FCR73575G
S16N/4.8 GRN WNW



FCR7356B
S16N/6.3 BLK WNW

FCR7356G
S16N/6.3 GRN WNW



FCR73575R
S16N/4.8 RED WNW



FCR7356
S16N/6.3 BLU WNW

FCR7356R
S16N/6.3 RED WNW



FCR73575L
S16N/4.8 BLU WNW

FCR7356Y
S16N/6.3 YEL WNW

FCR7357B
S16N BLACK WNW
SOLDER TAG VERSION



FCR7357G
S16N GREEN WNW
SOLDER TAG VERSION

FCR7357L
S16N BLUE WNW
SOLDER TAG VERSION

FCR7357L
S16N BLUE WNW
SOLDER TAG VERSION



FCR7357Y
S16N YELLOW WNW
SOLDER TAG VERSION

Shrouded, 4mm, nickel or tin plated socket. Mates with shrouded or unshrouded plugs.
Rated 1000V, CAT III. 24A for 4.8mm FastOn and Solder tag
32A for 6.3mm FastOn