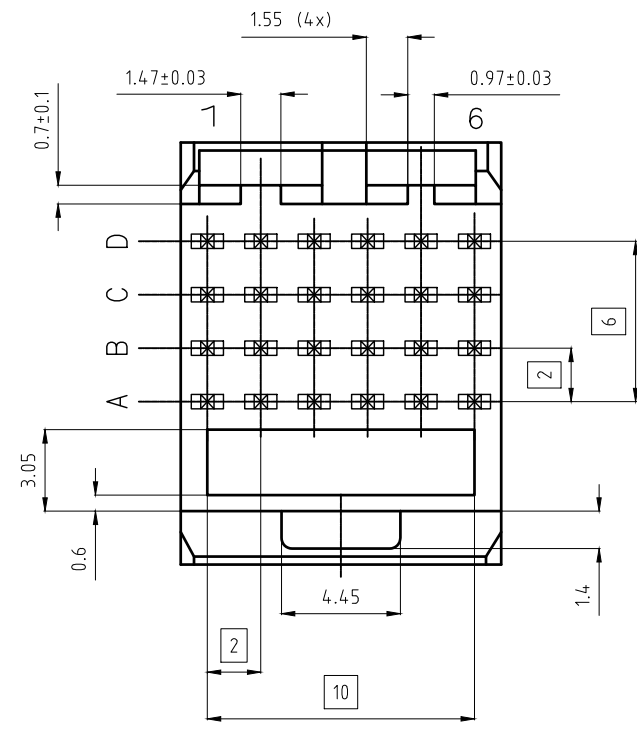
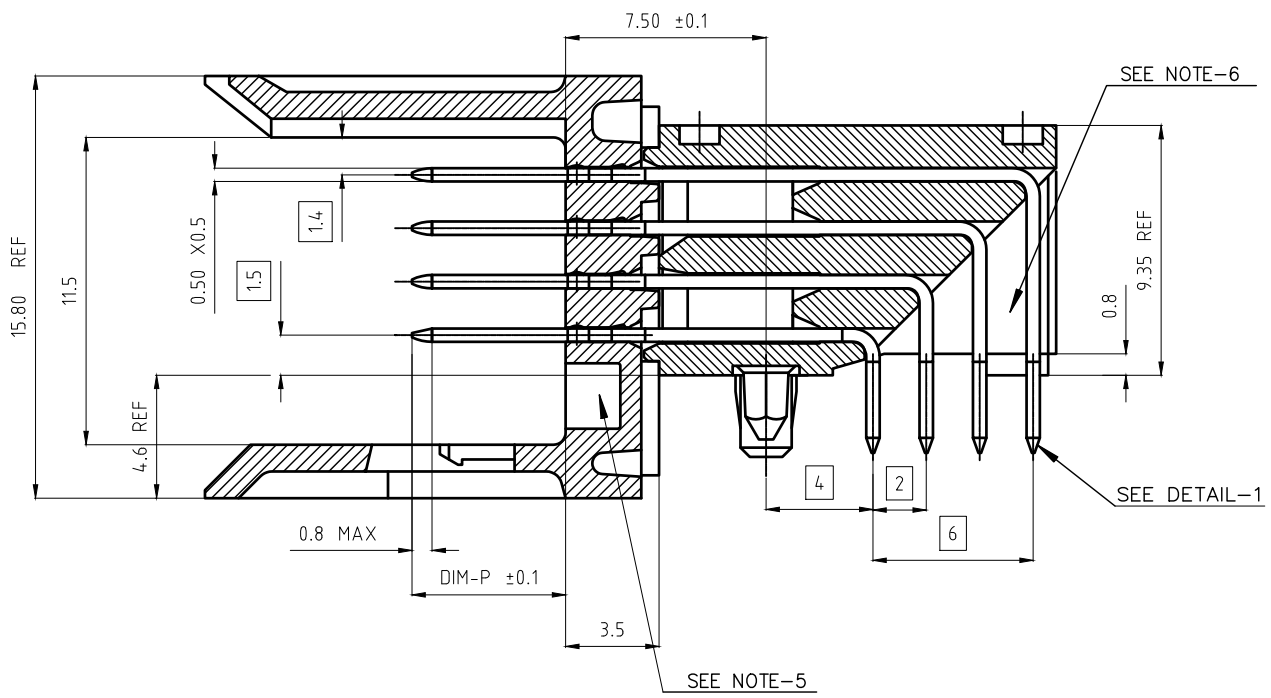
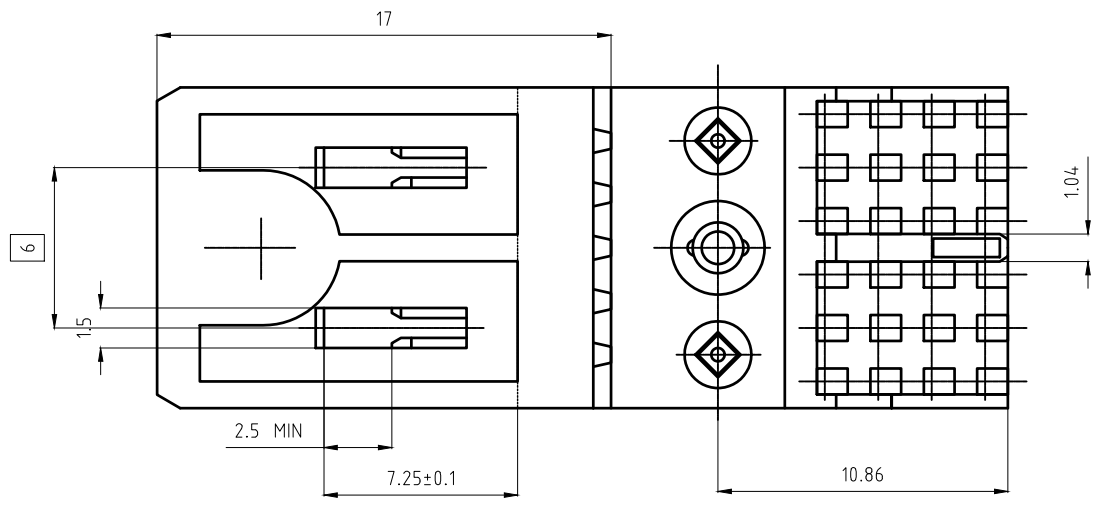


REFER NOTE-2

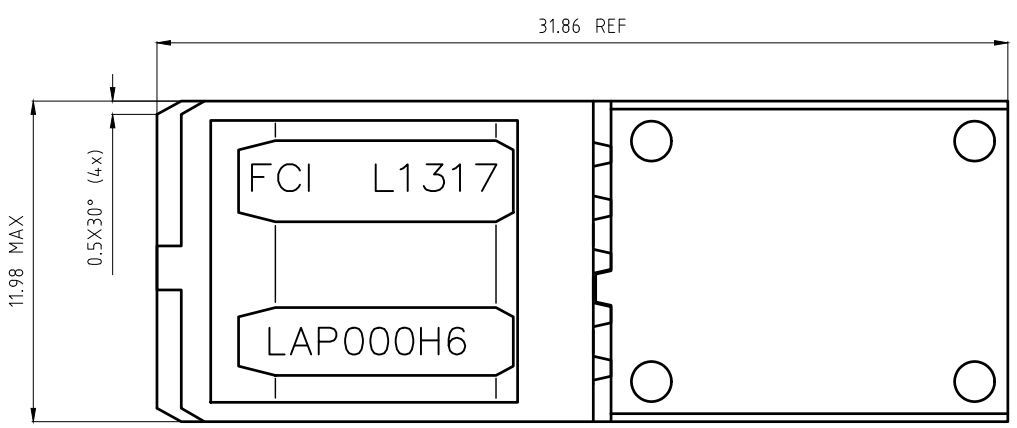
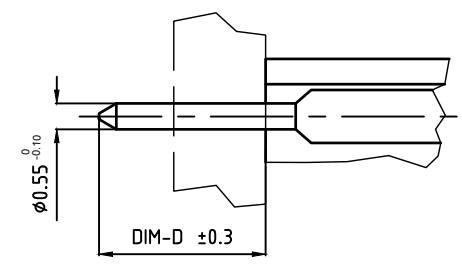
PART NUMBER :HM1L41XXP000HYPLF

NOTES:

1. MATERIAL : BODY : LCP UL94-V0  
: CONTACT : COPPER ALLOY.
2. FOR PLATING PERFORMANCE REFER DRAWING # 10159409  $\Delta$
3. NORMINATIVE REF = IEC-61076-4-104.
4. ONE CENTER PEG FOR HOLD DOWN FORCE.
5. CODING RECESS FOR 8MM EXTENDED KEYS.
6. THIS PRODUCT MEETS EUROPEAN UNION DIRECTIVES AND OTHER COUNTRY REGULATIONS AS DESCRIBED IN GS-47- 0004
7. THE HOUSING WILL WITHSTAND EXPOSURE TO 260° PEAK TEMPERATURE FOR 10 SECONDS IN A WAVE SOLDER APPLICATION
8. CENTRAL WALL WITH END REAR SUPPORT.
9. PACKAGING IN TRAY + COVER  
IF SUFFIX "P" IS ADDED IN P/N PACKAGING IS IN TRAYS BUT CONNECTOR MARKING IS WITHOUT "P"  
EXAMPLE: HM1xxxxxxxxxHYP , MARKED HM1xxxxxxxxxHY
10.  $\Delta$  SYMBOL WILL BE NEXT TO ANY DIMENSION, VIEW, OR NOTE WHICH HAS BEEN MODIFIED WITH THE CURRENT DRAWING REVISION.



DETAIL-1: SOLDER TAIL



GENERAL CHARACTERISTICS AND ROHS INFORMATIONS:  
SEE PRODUCT SPECIFICATION GS-12-446

OTHERS INFORMATIONS,SEE DRW C-8626-0154-2

mat'l. code		NOTE 1	surface 58	tolerance	projection	product family
ltr		ecn no	dr	date	ISO 1302	METRAL
K	LS06-0097	LGO		2006-07-12	tolerances unless otherwise specified	title
L	LS07-0184	MLE		2007-07-24	0.X±0.3	METRAL RA HDR WB CONV
M	ELX-I-38656	MINI		2020-10-15	0.XX±0.13	4x6 CTS-STB-PUSH PEG
					0.XXX±0.050	scale 1:1
					angles	dwg no
					linear	sheet 1 of 2
					0°±2°	size
					dr	A3
					enr	Amphenol
					chr	FCI
					appd	type
						Product
						Customer
						Drawing
sheet index	revision sheet	M	M			
		1	2			

# PART NUMBER

PART NUMBER / CONTACT LOADING						SP N°
DIM-P ±0.10				DIM-D ±0.3	P/N AND PERFORMANCE LEVEL	
ROW-A	ROW-B	ROW-C	ROW-D			
5.00	5.00	5.00	5.00	TABLE-2	HM1L41AxP000H  PLF	
5.75	5.75	5.75	5.75	TABLE-2	HM1L41LxP000H  PLF	
6.50	6.50	6.50	6.50	TABLE-2	HM1L41DxP000H  PLF	
6.50	5.00	5.00	5.00	TABLE-2	HM1L41BxP000H  PLF	
6.50	5.75	5.75	6.50	TABLE-2	HM1L41CxP000H  PLF	
5.00	5.00	6.50	5.00	TABLE-2	HM1L41ZxP110H  PLF	110
5.00	5.75	6.50	5.00	TABLE-2	HM1L41ZxP430H  PLF	430
5.00	5.75	5.00	5.00	TABLE-2	HM1L41ZxP448H  PLF	448
5.75	5.00	5.00	5.00	TABLE-2	HM1L41ZxP009H  PLF	009
5.75	6.50	5.75	5.00	TABLE-2	HM1L41ZxP424H  PLF	424
6.50	5.75	6.50	5.75	TABLE-2	HM1L41ZxP037H  PLF	037
6.50	5.75	5.00	5.75	TABLE-2	HM1L41ZxP102H  PLF	102
6.50	6.50	6.50	5.75	TABLE-2	HM1L41ZxP135H  PLF	135
6.50	5.00	5.00	5.00	2.90	HM1L41ZAP239H  PLF	239
6.50	8.00	6.50	5.75	2.90	HM1L41ZAP329H  PLF	329
6.50	5.75	5.75	5.75	TABLE-2	HM1L41ZxP369H  PLF	369

DIM-D=2.9 / replace 'x' by 'A' in the P/N

DIM-D=3.7 / replace 'x' by 'B' in the P/N

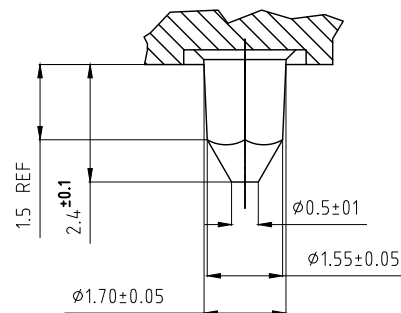
TABLE-2

REFER DRAWING # 10159409

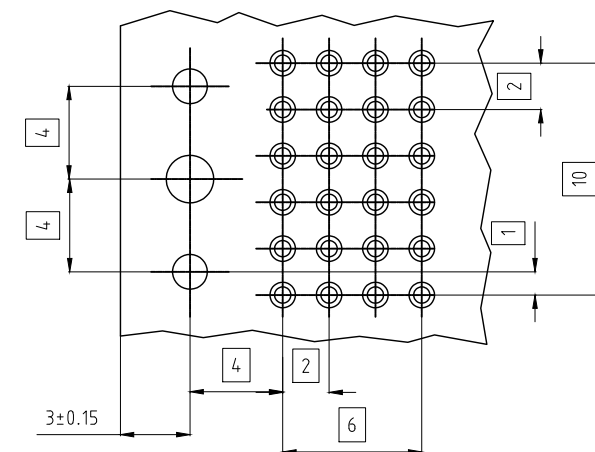
STANDARD MATING LENGTHS = 5.75 (AND 5.00-6.50)

STANDARD TERMINATION LENGTH = 2.90

## DETAIL OF LOCATING PEGS (2x) SCALE 8/1

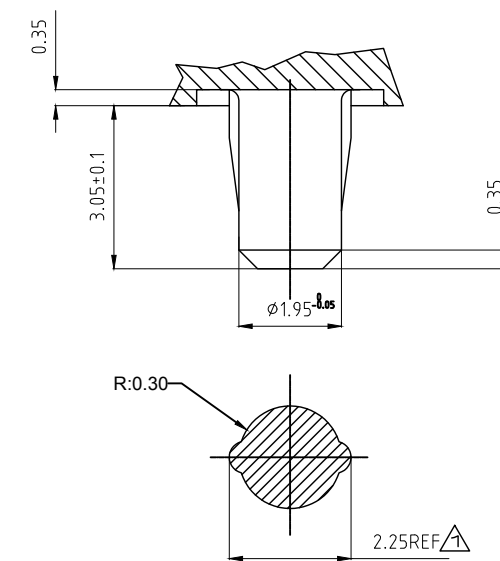


## RECOMMENDED PCB LAYOUT



FOR PTH REFER-GS-12-445 (FOR PRESS FIT)  
GS-12-446 (FOR STB)

## DETAIL OF CENTRAL PEG SCALE 8/1



OTHERS INFORMATIONS, SEE DRW C-8626-0154-1

mat'l. code		NOTE 1		surface 58	tolerance	projection	product family
ISO 1302		tolerances unless otherwise specified		ISO 406	ISO 1101		METRAL
ltr	ecn no	dr	date	angles	linear	MM	title
K	LS06-0097	LGO	2006-07-12	0°±2°	0.X±0.3		METRAL RA HDR WB CONV
L	LS07-0184	MLE	2007-07-24		0.XX±0.13		4x6 CTS-STB-PUSH PEG
M	ELX-I-38656	MINI	2020-10-15		0.XXX±0.050	scale 1:1	dwg no
sheet index		revision sheet	M M	dr	CHAMPION	1994-04-06	sheet 2 of 2
1		1	2	enr	ARUN	2020-10-15	size
				chr	ALEX BABU	2020-10-15	A3
				appd	SANOJ	2020-10-15	type
							Product Customer Drawing