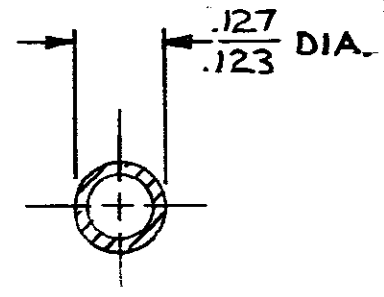
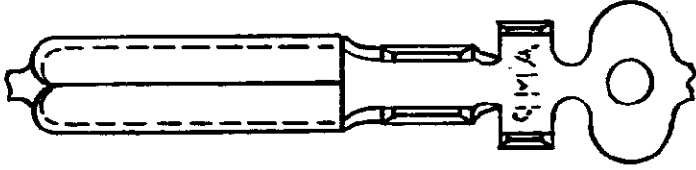


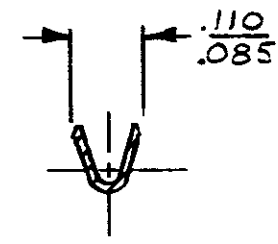
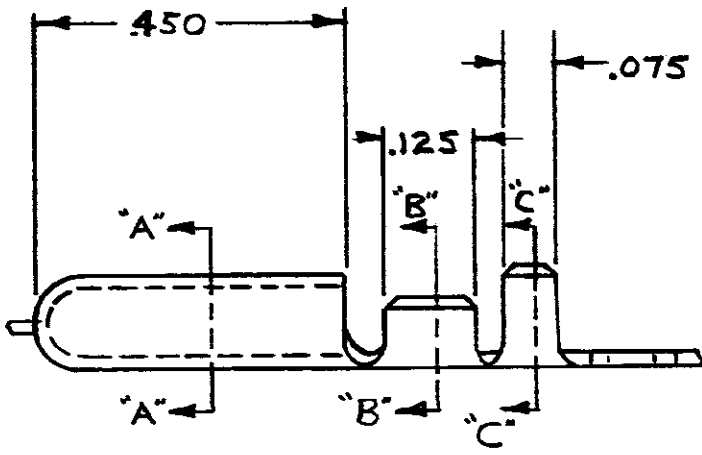
DRAWING MADE IN AMERICAN PROJECTION

NUMBER 62074

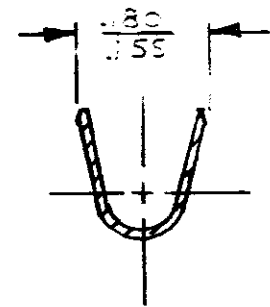
WAS P72-7244



SECTION "A-A"



SECTION "B-B"



SECTION "C-C"

CONTINUOUS STRIP OF WIRE

PART NUMBER
62074-1

Unpublished drawings are hereby acknowledged without written permission of AMP Incorporated.

©1972 BY AMP INCORPORATED. ALL RIGHTS RESERVED. AMP PRODUCTS COVERED BY PATENTS AND/OR PATENTS PENDING.

CUSTOMER COPY REFERENCE ONLY

MATERIAL AND FINISH
.016 BRASS
NONE



AMP INCORPORATED
HARRISBURG, PENNA.

WIRE RANGE INSULATION
24-20 1060-.03

CLASS #

TYPE #

TOLERANCE EXCEPT AS NOTED ± .015 ± 1° 4-1

LOC AF NO 62074

REV A

NAME .125 DIA. PIN

APPROVED	DATE	APP	DATE
LK ESPENSHADE	8/8/72	B. OLSSON	6-26-72
CHK	DATE	APP	DATE
END SMITH	8/8/72	B. OLSSON	6-26-72

DIMENSIONS IN INCHES. DO NOT SCALE PRINT.