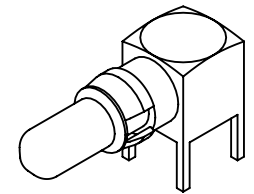
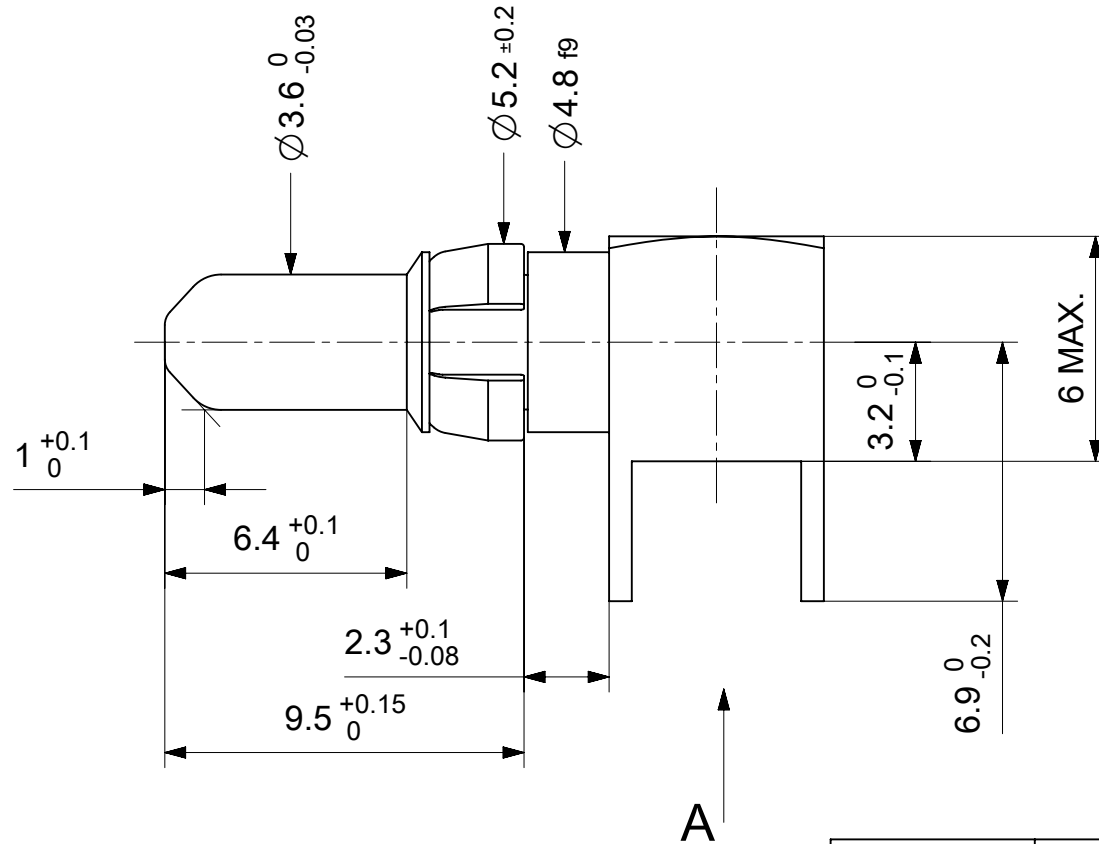
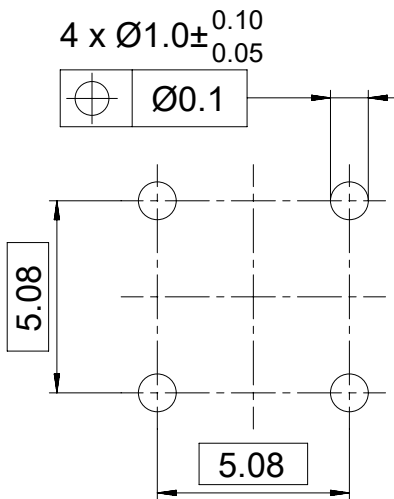


PCB-Layout



2:1

RoHS compliant
by exemption

1727040189	FMP012P104	104
1731120387	FMP012P115	115
1731121292	FMP012P203	203
Material Number	FCT Part Number	Material + Finish See extra sheet

UNLESS OTHERWISE SPECIFIED DIMENSIONS FOR REFERENCE ONLY				REPLACEMENT FOR DOCUMENT NUMBER: FMP012P				
THIS DRAWING CONTAINS INFORMATION THAT IS PROPRIETARY TO MOLEX ELECTRONIC TECHNOLOGIES, LLC AND SHOULD NOT BE USED WITHOUT WRITTEN PERMISSION								
FUNCTIONAL SYMBOLS	DIMENSION UNITS	SCALE	CURRENT REV DESC:					
$\frac{F}{A} = 0$	mm	5:1	EC NO: 686935					
$\frac{F}{E} = 0$	GENERAL TOLERANCES (UNLESS SPECIFIED)		DRWN: FVETTER 2021/11/29					
$\frac{F}{P} = 0$	ANGULAR TOL ± °		CHK'D: MTEUBEL 2021/11/30					
DIVISIONAL SYMBOLS	4 PLACES	±	APPR: MTEUBEL 2021/11/30					
	3 PLACES	±	INITIAL REVISION:					
	2 PLACES	±	DRWN: VLOKESHA 2021/03/31					
	1 PLACE	±	APPR: MTEUBEL 2021/11/25					
	0 PLACES	±	DOCUMENT NUMBER		DOC TYPE	DOC PART	REVISION	
DRAFT WHERE APPLICABLE MUST REMAIN WITHIN DIMENSIONS			FIRST ANGLE PROJECTION	DRAWING	SERIES	MATERIAL NUMBER	CUSTOMER	SHEET NUMBER
				A4-SIZE	172704	SEE TABLE	GENERAL MARKET	1 OF 1
			molex					
			FCT 40A HIGH POWER CONTACT FOR EN 60603-2					
			PRODUCT CUSTOMER DRAWING					

DOCUMENT STATUS	P1	RELEASE DATE	2021/11/30	09:44:59
-----------------	----	--------------	------------	----------