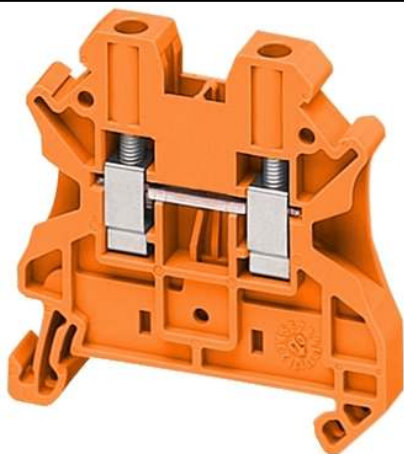


NSYTRV42AR

SCREW TERMINAL, FEED THROUGH, 2 POINTS, 4MM² , ORANGE



Main

| | |
|------------------------------------|-------------------------------------------|
| Range | Lineryg |
| Product name | Lineryg TR |
| Product or Component Type | Terminal block |
| Device short name | TRV |
| Accessory / separate part category | Connection accessory |
| Terminal block type | Passthrough |
| Terminal block level | 1 |
| Mounting Mode | Clip-on |
| Nominal cross section | 0.01 in ² (4 mm ²) |
| Length | 1.88 in (47.7 mm) |
| Color | Orange |
| Quantity per Set | Set of 50 |

Complementary

| | |
|--------------------------------|-------------------------------------------------------------------------------------------------------------------------------------------------------------------------------------------------------------------------------------------------------------------------------------------------------------------------------------------|
| Width | 0.24 in (6.2 mm) |
| Height | 1.87 in (47.5 mm) |
| Connections - terminals | 1 x screw terminal upstream M3) 1 x screw terminal downstream M3) |
| Number of connections | 2 |
| Connection position | Sideways |
| Number of measurement input | 2 |
| Cable cross section | 0.00...0.01 In ² (0.14...6 mm ²), solid with cable end 0.00...0.01 In ² (0.2...4 mm ²), flexible with cable end 0.00...0.01 In ² (0.2...6 mm ²), solid without cable end 0.00...0.01 in ² (0.2...6 mm ²), flexible without cable end |
| Tightening torque | 5.31...7.08 lbf.in (0.6...0.8 N.m) |
| Wire stripping length | 0.35 in (9 mm) |
| Tool type | Connection screwdriver Disconnection screwdriver |
| [Ue] rated operational voltage | 1000 V EN/IEC 60947-7-1 600 V CSA 690 V ATEX Exe II Ex II 2 GD 600 V cURus |
| Line Rated Current | 32 A EN/IEC 60947-7-1 30 A CSA 30 A ATEX Exe II Ex II 2 GD 30 A cURus |
| Material | Polyamide 6/6 insulating case Copper alloy connector and screw Copper alloy commoning link Chromium-nickel steel spring |
| Dielectric loss | 0.01 at 1 MHz IEC 60250 0.01 at 1 MHz VDE 0303-T4 |
| Dielectric constant | 3.7 at 1 MHz |
| Resistivity | 10000 MΩ.M IEC 60093 10000 MΩ.m VDE 0303-T30 |
| Surface resistance | 1000 GΩ IEC 60093 1000 GΩ VDE 0303-T30 |
| Creep resistance | 500 CTI (> 400 kB) IEC 60093 500 CTI (> 400 kB) VDE 0303-T30 |
| Flame retardance | V0 0.03 in (0.8 mm) UL 94 |

| | |
|-----------------------|------------------------------------------------------------------------------------------|
| Net Weight | 0.33 oz (9.4 g) |
| Range compatibility | Prisma G Prisma P Prisma PH Prisma Pack Spacial Kaedra Pragma TeSys |
| Product Compatibility | Spacial enclosures |

Environment

| | |
|---------------------------------------|-------------------------------------------------------------------------------------|
| Product Certifications | GL IEC-Ex DNV VDE CSA EAC CURus ATEX LR |
| Dielectric strength | 1000 V IEC 60243-1 |
| Ambient air temperature for operation | -40...266 °F (-40...130 °C) IEC 60216-1 -40...266 °F (-40...130 °C) VDE 0304-T21 |

Ordering and shipping details

| | |
|-----------------------|-------------------------------------------|
| Category | 21715-IEC TERMINAL BLOCKS-NSY,AM1,DF6,GK1 |
| Discount Schedule | CP5 |
| GTIN | 3606480531934 |
| Nbr. of units in pkg. | 1 |
| Package weight(Lbs) | 0.32 oz (9.0 g) |
| Returnability | Yes |
| Country of origin | CN |

Packing Units

| | |
|------------------------------|--------------------------|
| Unit Type of Package 1 | PCE |
| Package 1 Height | 1.97 in (5 cm) |
| Package 1 width | 2.76 in (7 cm) |
| Package 1 Length | 9.96 in (25.3 cm) |
| Unit Type of Package 2 | S03 |
| Number of Units in Package 2 | 1150 |
| Package 2 Weight | 25.20 lb(US) (11.432 kg) |
| Package 2 Height | 11.81 in (30 cm) |
| Package 2 width | 11.81 in (30 cm) |
| Package 2 Length | 15.75 in (40 cm) |
| Unit Type of Package 3 | BB1 |
| Number of Units in Package 3 | 50 |
| Package 3 Weight | 16.79 oz (476.0 g) |
| Package 3 Height | 1.97 in (5 cm) |
| Package 3 width | 2.76 in (7 cm) |
| Package 3 Length | 9.96 in (25.3 cm) |

Offer Sustainability

| | |
|-----------------------------|---------------------------------------------------------------------------------------------------------------------------------------------------------------------------------------------------------------------------------------------------------------------------------------------|
| Sustainable offer status | Green Premium product |
| California proposition 65 | WARNING: This product can expose you to chemicals including: Lead and lead compounds, which is known to the State of California to cause cancer and birth defects or other reproductive harm. For more information go to www.P65Warnings.ca.gov |
| REACH Regulation | REACH Declaration |
| EU RoHS Directive | Compliant EU RoHS Declaration |
| Mercury free | Yes |
| RoHS exemption information | Yes |
| China RoHS Regulation | China RoHS Declaration |
| Environmental Disclosure | Product Environmental Profile |
| WEEE | The product must be disposed on European Union markets following specific waste collection and never end up in rubbish bins. |
| Halogen content performance | Halogen free plastic parts product |

Contractual warranty

| | |
|----------|-----------|
| Warranty | 18 months |
|----------|-----------|