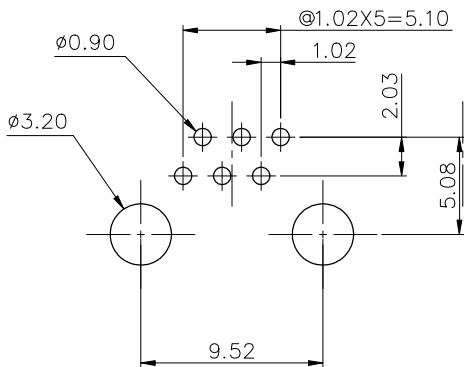
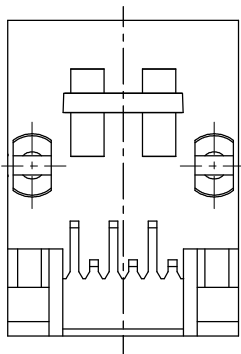
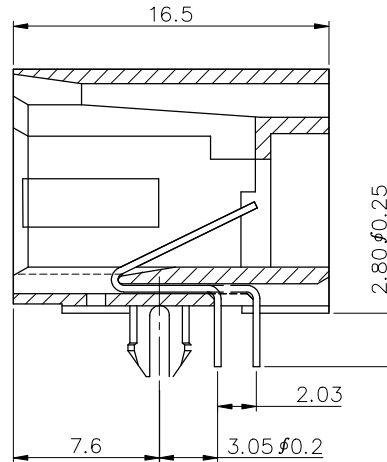
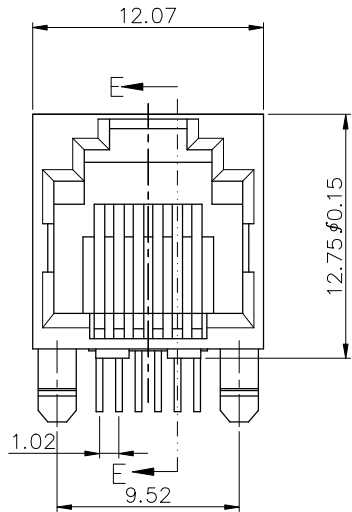


| REVISION RECORD |     |             |      |      |
|-----------------|-----|-------------|------|------|
| REV             | ECO | DESCRIPTION | DRFT | CHKD |
|                 |     |             |      |      |



PC Board Layout Component Side Shown

SECCION E-E

NOTES:

ELECTRICAL:

- VOLTAGE RATING : 125 VAC RMS.
- CURRENT RATING : 1.5 AMP.
- CONTACT RESISTANCE : 30 MINIOHMS MAX.
- INSULATION RESISTANCE: 1000 MEGOHMS MIN @ 500 VDC.
- DIELECTRIC STRENGTH : 1000 VAC RMS 60Hz, 1MIN.

MECHANICAL:

- HOUSING MATERIAL : PBT+30%.G.F UL94V-0. COLOR-BLACK
- CONTACT MATERIAL : PHOSPHOR BRONZE  $\phi$ 0.46mm
- PLATING : 1: CONTACT AREA- SELECTIVE GOLD PLATING.  
2: TAILS- 150u" TIN-LEAD MIN OVER 50u" NICKEL.
- OPERATING LIFE : 750 CYCLES MIN.
- PCB RETENTION PRE-SOLDER : 1 LB MIN.
- PCB RETENTION POST-SOLDER: 10 LBS MIN.

ENVIRONMENTAL:

- STORAGE : -40°C TO +85°C.
- OPERATION: -40°C TO +85°C.

MATES WITH MODULAR PLUG CONFORMING TO FCC PART 68, SUBPART F.

PART NUMBER: E5R6X-50LOHX-L

- |       |        |        |
|-------|--------|--------|
| 2- 2C | 1- 3u" | 2- 6u" |
| 4- 4C | 3-15u" | 4-30u" |
| 6- 6C | 5-50u" |        |



RoHS Compliant

FULL RISE ELECTRONIC CO., LTD

TITLE  
RJ-01 SINGLE PORT PCB JACK

DRAWING NO. GE5R3001-LC  
/PART NO. SEE NOTE

DO NOT SCALE DRAWING SHEET 1 OF 1

|                            |   |                 |                |
|----------------------------|---|-----------------|----------------|
| MM (INCH)                  |   | DFTO CZH        | DATE 10/9/2K   |
| TOLERANCES EXCEPT AS NOTED |   | CHKD XFY        | DATE 10/10/'00 |
|                            |   | MFO BOTON       | DATE 10/10/'00 |
| MM                         | ± | APPVL           | DATE           |
| .0 ± 0.2                   | ± |                 |                |
| .00 ± 0.15                 | ± |                 |                |
| .000 ± 0.075               | ± |                 |                |
| ANGLES ± 0.5               |   | QTY :           |                |
| THIRD ANGLE PROJECTION     |   | FINISH :        |                |
|                            |   | SCALE : 3.5 : 1 |                |