

NOTE:

- MATERIAL**
 HOUSING : HIGH TEMPERATURE THERMOPLASTIC, UL 94V-0, COLOR- BIEGE
 TERMINAL 1 & 2 - BRASS
 TERMINAL 3 - PHOSPHOR BRONZE
- FINISH :**
 TERMINAL 1 : 2.54 MICROMETER MIN TIN OVER 2.54- 3.81 MICROMETER MIN NICKEL OVERALL
 TERMINAL 2 : 2.54 MICROMETER MIN SELECTIVE TIN (MATTE) OVER 1.27-2.54 MICROMETER MIN NICKEL OVERALL
 TERMINAL 3: 2.54 MICROMETER MIN SELECTIVE TIN (MATTE) OVER 2.54-3.81 MIN NICKEL OVERALL
- RECOMMENDED PCB THICKNESS 1.57 MM**

PART NO.	REMARKS	STATUS
36558-0001	TERMINAL 1 (CENTRE PIN) RECESSED BY 2MM	ACTIVE
36558-0002	TERMINAL 1 (CENTRE PIN) WITHOUT RECESS	VOID
36558-0003	TERMINAL 1 (CENTRE PIN) RECESSED BY 2MM	ACTIVE

ROHS COMPLIANT

EC NO: I2005-0216 DRWN:SSUDHIR 2005/05/13 CHKD:KPRASAD 2005/05/13 APPR:KPRASAD 2005/05/13	QUALITY SYMBOLS $\blacktriangledown = 0$ $\triangleleft = 0$	GENERAL TOLERANCES (UNLESS SPECIFIED)		DIMENSION STYLE MM ONLY		SCALE 4:1	DESIGN UNITS METRIC	THIRD ANGLE PROJECTION	
		4 PLACES \pm --- \pm --- 3 PLACES \pm --- \pm --- 2 PLACES ± 0.2 \pm --- 1 PLACE ± 0.2 \pm --- ANGULAR $\pm 2^\circ$	DRAWN BY S.S CHECKED BY G.L APPROVED BY G.L	DATE 15/07/01 DATE 15/07/01 DATE 15/07/01	TITLE DC POWER JACK RIGHT ANGLED		MOLEX INCORPORATED		DOCUMENT NO. SD-36558-001
DRAFT WHERE APPLICABLE MUST REMAIN WITHIN DIMENSIONS	SEE CHART		THIS DRAWING CONTAINS INFORMATION THAT IS PROPRIETARY TO MOLEX INCORPORATED AND SHOULD NOT BE USED WITHOUT WRITTEN PERMISSION						

7 6 5 4 3 2 1

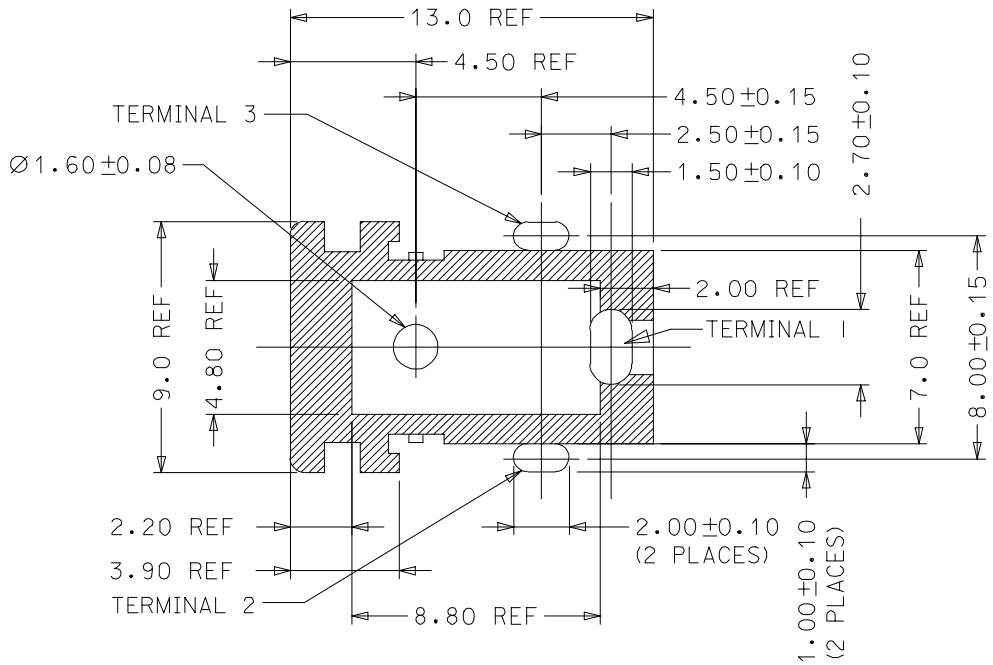
E

D

C

B

A



RECOMMENDED PCB LAYOUT
TOP VIEW COMPONENT SIDE

EC NO: 12005-0216 DRWN: SSUDHIR 2005/05/13 CHKD: KPRASAD 2005/05/13 APPR: KPRASAD 2005/05/13	QUALITY SYMBOLS ▽=0 ◻=0	GENERAL TOLERANCES (UNLESS SPECIFIED)		DIMENSION STYLE MM ONLY		SCALE 10:1	DESIGN UNITS METRIC	THIRD ANGLE PROJECTION		
			mm	INCH	DRAWN BY	DATE	TITLE DC POWER JACK RIGHT ANGLED			
		4 PLACES	± ---	± ---	S.S	15/07/01				
		3 PLACES	± ---	± ---	CHECKED BY	DATE	MOLEX MOLEX INCORPORATED			
2 PLACES	± 0.2	± ---	G.L	15/07/01						
1 PLACE	± 0.2	± ---	APPROVED BY	DATE	MATERIAL NO. SEE CHART					
ANGULAR ± 2 °		G.L		15/07/01					DOCUMENT NO.	SD-36558-001
DRAFT WHERE APPLICABLE MUST REMAIN WITHIN DIMENSIONS		SIZE		THIS DRAWING CONTAINS INFORMATION THAT IS PROPRIETARY TO MOLEX INCORPORATED AND SHOULD NOT BE USED WITHOUT WRITTEN PERMISSION						

6 5 4 3 2 1