

DESCRIPTION	APP'D./DATE	REV
C. W. ...	8-27-90	1

**SAFETY ORGANIZATION(S):**

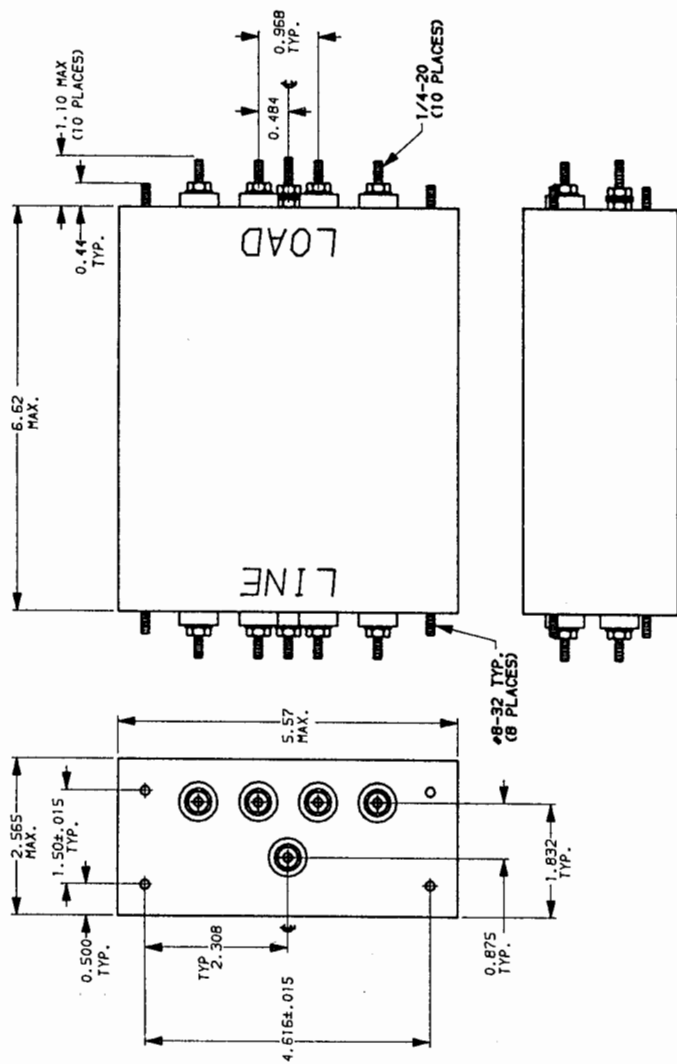
THIS FILTER HAS BEEN FORMALLY RECOGNIZED, CERTIFIED OR APPROVED BY THE LISTED AGENCY. THEREFORE, ALL TEST/REQUIREMENTS SPECIFIED IN THE LATEST REVISION OF THE FOLLOWING AGENCY STANDARDS HAVE BEEN MET.

- UL RECOGNIZED CSA CERTIFIED OPERATING SPECIFICATIONS. LINE VOLTAGE/CURRENT,
  - UL 1283 CSA 22.2 NO. 0, 0.4, 8
  - 20 OR 30 AMP, 250VAC PHASE TO NEUTRAL/GND
  - 20 OR 30 AMP, 440VAC PHASE TO PHASE
- LINE FREQUENCY, 50-60Hz
- MAX. LEAKAGE CURRENT, EACH LINE TO GROUND
  - 1.4 ma @ 120 V 60 Hz
  - 3.4 ma @ 250 V 50 Hz
- OPERATING AMBIENT TEMP. RANGE, -10°C TO +40°C @ RATED CURRENT, I<sub>r</sub>
- IN AN AMBIENT, T<sub>a</sub>, HIGHER THAN 40°C, THE MAXIMUM OPERATING CURRENT, I<sub>o</sub>, IS AS FOLLOWS:
 
$$I_o = I_r \sqrt{\frac{85 - T_a}{45}}$$

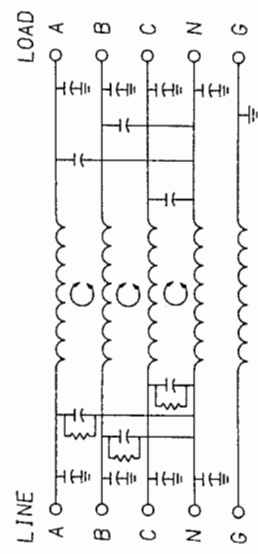
**RELIABILITY SPECIFICATIONS:**  
 STORAGE TEMPERATURE, -25°C to +85°C  
 HUMIDITY, 21 DAYS @ 40°C 95% RH

**TEST SPECIFICATIONS:**  
 INDUCTANCE, 20A = 4.44mH NOMINAL 30A = 1.97 mH NOMINAL  
 CAPACITANCE: (MEASURED @ 1 KHZ, 0.25 VAC MAX., 25°C ±1°C)  
 PHASE/NEUTRAL TO GROUND, .018uF ±20%  
 PHASE TO NEUTRAL, 3.29uF ±20%  
 DISCHARGE RESISTOR; 110 KΩ  
 PHASE/NEUTRAL TO GROUND AND PHASE TO PHASE INSULATION RESISTANCE, 5000 MΩ (MIN) AT 100 VDC  
 (W/O DISCHARGE RESISTOR) 20°C AND 50X RH

**RECOMMENDED RECEIVING INSPECTION HIPOT:**  
 PHASE TO GROUND 1500 VAC FOR 1 MINUTE  
 NEUTRAL TO GROUND 1500 VAC FOR 1 MINUTE  
 PHASE TO NEUTRAL 1450 VDC FOR 1 MINUTE  
 FILTER APPROVAL, THE BEST WAY TO SELECT AND QUALIFY A FILTER IS FOR YOUR ENGINEERING TO TEST THE UNIT IN YOUR EQUIPMENT.



NOTE: UNLESS OTHERWISE SPECIFIED, TOLERANCE TO BE ±.045



50Ω - 50n (MINIMUM) INSERTION LOSS	
FREQUENCY MHZ	COMMON
.05	22 39 55 56 65 65 54
.15	15 30 55 55 61 63 50
.50	20 50 65 65 65 60 52
1.0	5 43 65 65 65 59 49

This document is proprietary to CORCOM INC. and is not to be reproduced nor used for manufacturing purposes except on CORCOM's order or prior written consent.

TOLERANCE EXCEPT AS NOTED  
 DECIMAL: .XXX .XX .X ANGLES ± 1°  
 ENGLISH: —  
 METRIC: ± —  
 MATERIAL: AS SUPPLIED  
 FINISH:

**22 CORCOM**  
 LIBERTYVILLE, IL 60048

**POWER LINE FILTER**

SCALE 1:2 DATE 5-9-88 DRG. NO. REV.  
 DWN. BY TDL ORIGINATOR 20AYP6C & 30AYP6C.01  
 CM