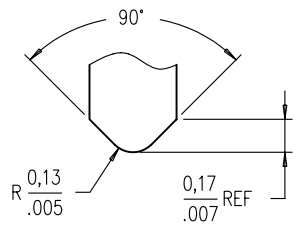
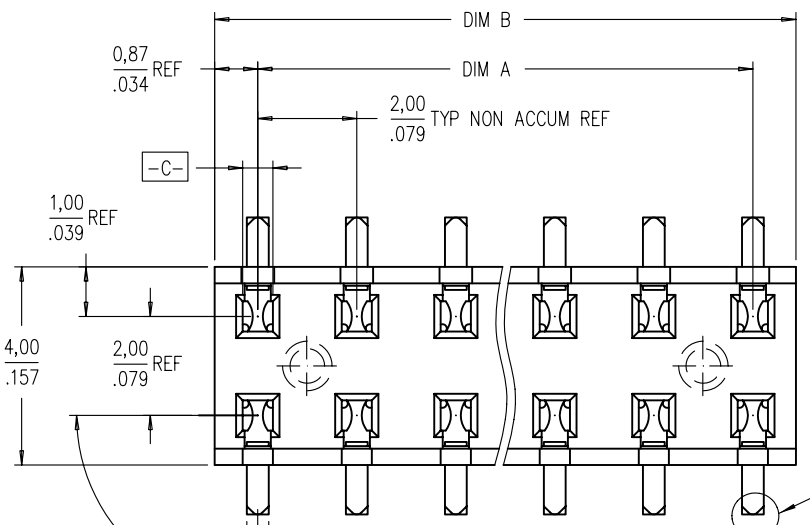
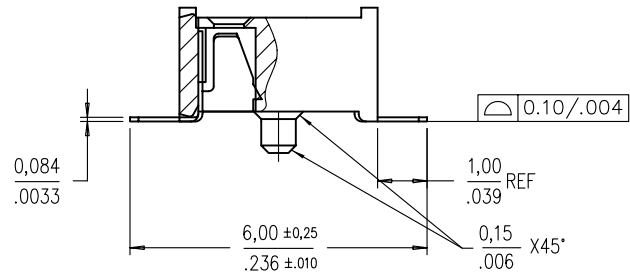
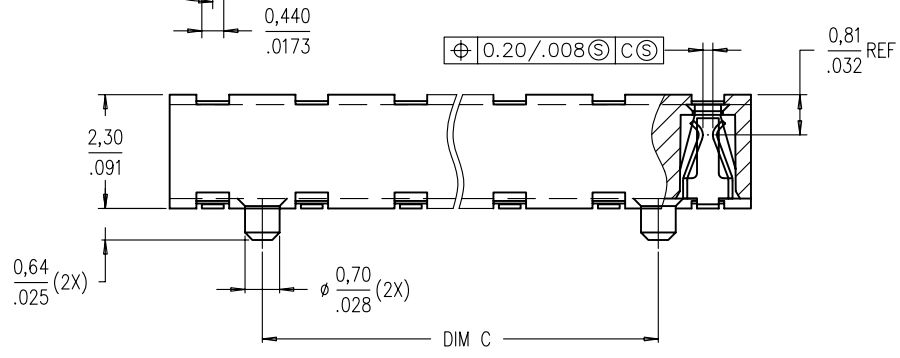


Tous droits strictement reserves. Reproduction ou communication a des tiers interdite sous quelque forme que ce soit sans autorisation ecrite du proprietaire. Propriete de c FCI. Droits de reproduction FCI.

All rights strictly reserved. Reproduction or issue to third parties in any form whatever is not permitted without written authority from the proprietor. Property of FCI. Copyright FCI.



DETAIL A
NOTE 5



CONFIDENTIAL

mat'l. code				tolerances unless otherwise specified		CUSTOMER COPY	FCI www.fciconnect.com		
ltr	ecn no	dr	date	linear	X.X±0.3/.XX±.01		projection MM/INCH	title LPVCC SMT 2.3 TOP ENTRY ASSY, STACKABLE, WITH 0.64/.025 LOCATING FEATURES	
A	S00044	JPEH	3/21/00		X.XX±0.13/.XXX±.005	scale 10:1		product family	code
B	S00065	JPEH	4/25/00	angles	X.XXX±0.051/.XXX±.0020		product size	LPVCC	—
C	S05-0103	KBM	4/8/05		ANGLES ±2°		dwg no	sheet	
				dr	JPEH	4/25/00	A	63473	1 of 2
				engr	JPEH	4/25/00			
				chr	KB MAH	4/8/05			
				appd	JOEY NG	4/8/05			
sheet index	revision sheet	C	C						
		1	2						

cage code
22526

ACAD

PDM: Rev:C

STATUS: Released

Printed: Nov 27, 2010

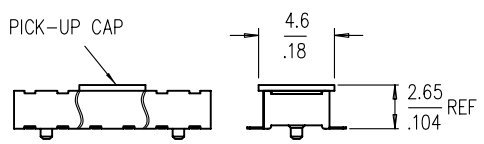
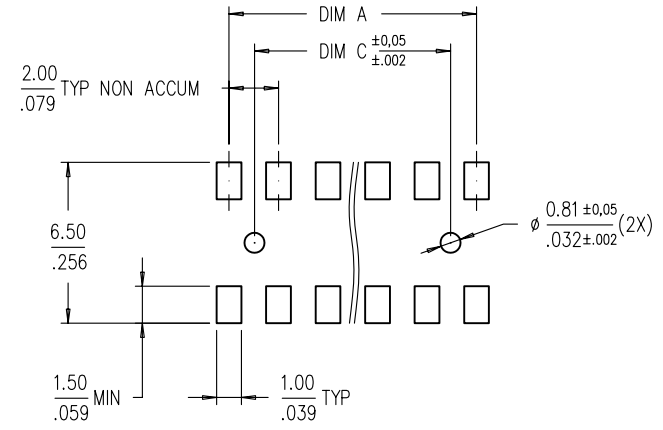


PRODUCT NO ⑥	POSITIONS	DIM. A	DIM. B	DIM. C
63473-X20	2 X 10	18,00/,709	19,74/,777	16,00/,630

CONTACT AREA PLATING OPTIONS
1 = 0,76um/30u" Au CONTACT AREA
3 = 0,38um/15u" Au CONTACT AREA

NOTES :

- 1 HOUSING MAT'L : HIGH TEMP PLASTIC.
- 2 TERMINAL MAT'L : BeCu.
- 3 TERMINAL RETENTION 0,5 Kg/1,1 Lbs.
- ④ SOLDERTAIL PLATING:
 - a) SOLDERTAIL OF P/N:63473-XXX IS TIN/LEAD PLATED.
 - b) SOLDERTAIL OF P/N:63473-XXXLF IS 100% MATTE TIN PLATED.
- 5 'V' CUT OPTIONAL - MANUFACTURING PROCESS OPTION.
- ⑥ PRODUCT DESCRIPTION CODE :
 XXXXX-XXXLF
 - LEAD FREE ④ ⑨
 - TOTAL POSITIONS
 - CONTACT AREA PLATING
 - BASE NUMBER
- 7 PACKAGING :
 - (a) XXXXX-XXX --- STD PACKAGING IN TUBE.
 - (b) XXXXX-XXXTR --- TAPE AND REEL (CONDUCTIVE) PACKAGING WITH PICK-UP CAP (SEE FIG 1).
 - (c) XXXXX-XXXTRN --- TAPE AND REEL (CONDUCTIVE) PACKAGING WITHOUT PICK-UP CAP.
- 8 THE HOUSING WILL WITHSTAND EXPOSURE TO 255° C PEAK TEMPERATURE FOR 10 SECONDS IN A CONVECTION, INFRA-RED OR VAPOR PHASE REFLOW OVEN.
- ⑨ THIS PRODUCT MEETS EUROPEAN UNION DIRECTIVES AND OTHER COUNTRY REGULATIONS AS DESCRIBED IN GS-22-008.



CONFIDENTIAL

mat'l. code				tolerances unless otherwise specified		CUSTOMER COPY		FCI www.fciconnect.com	
ltr	ecn no	dr	date	linear	X.X±0.3/.XX±.01	projection	title LPVCC SMT 2.3 TOP ENTRY ASSY, STACKABLE, WITH 0.64/.025 LOCATING FEATURES		
c				linear	X.XX±0.13/.XXX±.005	MM/INCH	product family LPVCC		code
				linear	X.XXX±0.051/.XXX±.0020		size dwg no		-
				angles	ANGLES ±2°	scale	A		sheet
				dr	JPEH 4/25/00		63473		2 of 2
				engr	JPEH 4/25/00	1:1			
				chr	KB MAH 4/8/05				
				appd	JOEY NG 4/8/05				
sheet index	revision sheet								

cage code 22526