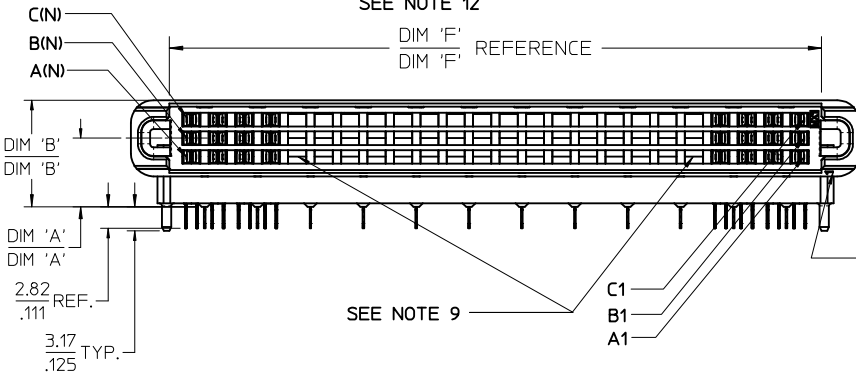


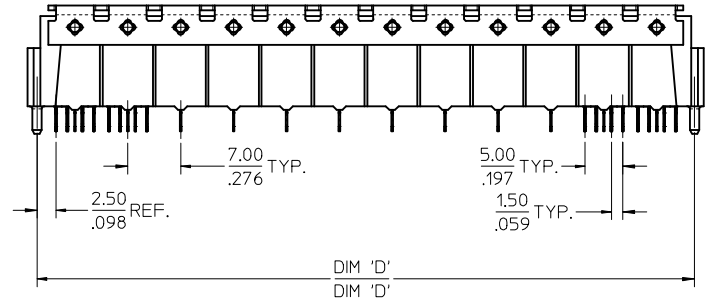
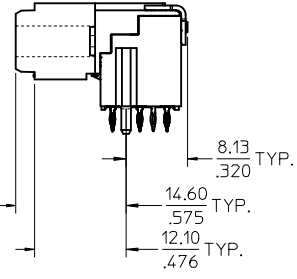
MARKING  
SEE NOTE 12



SEE NOTE 9

C1  
B1  
A1

CIRCUIT  
A1  
IDENTIFIER



NOTES:

- 1) MATERIALS:  
HOUSING - LIQUID CRYSTAL POLYMER, UL94 V-0  
WAFER DIELECTRIC - LIQUID CRYSTAL POLYMER, UL94 V-0  
CONTACT - COPPER ALLOY
- 2) FINISHES:  
CONTACT INTERFACE  
0.76 MICROMETER MINIMUM SELECT GOLD  
1.27 MICROMETER MINIMUM NICKEL OVERALL  
COMPLIANT INTERFACE  
0.76 MICROMETER MINIMUM SELECT TIN-LEAD OVER  
1.27 MICROMETER MINIMUM NICKEL OVERALL  
HOUSING  
0.10 MICROMETER MAXIMUM IMMERSION GOLD OVER  
3.81 MICROMETER MINIMUM NICKEL OVER  
3.81 MICROMETER MINIMUM COPPER OVERALL
- 3) PRODUCT SPECIFICATION: THIS PART CONFORMS TO MOLEX SPECIFICATION PS-75018-001.
- 4) PACKAGING SPECIFICATION: THIS PART TO BE PACKAGED PER SPECIFICATION PK-75020-010.
- 5) APPLICATION SPECIFICATION: THIS PART TO BE APPLIED PER SPECIFICATION PS-75018-001, APPLICATION TOOL AND INSTRUCTIONS PER AS-75018-001.
- 6) MATING INFORMATION  
THIS PART MATES WITH 75019-XXXX.  
WILL MATE WITH MAXIMUM 1.27mm MIS-ALIGNMENT.  
WILL MATE WITH MAXIMUM 0.5° MIS-ALIGNMENT.
- 7) FOR CIRCUIT DESIGNATION SEE SHEET 3
- 8) FOR PCB INFORMATION SEE SHEET 3
- 9) CIRCUITS IN THIS ZONE HAVE BEEN OMITTED TO SIMPLIFY THE MODEL. ACTUAL PRODUCT IS FULLY LOADED WITH TERMINALS.
- 10) APPLICATION TOOLING KEEP OUT AREA. NO COMPONENTS ALLOWED IN THIS AREA.
- 11) CONFORMS TO MOLEX COSMETIC SPECIFICATION PS-45499-002 AND PS-45499-003, CLASS C.
- 12) MARKING: PART NUMBER, MOLEX LOGO, DATE CODE
- 13) RECOMMENDED DRILL SIZE 0.66±0.03 TO YIELD FINISHED PLATED THROUGH HOLE OF 0.55±0.05

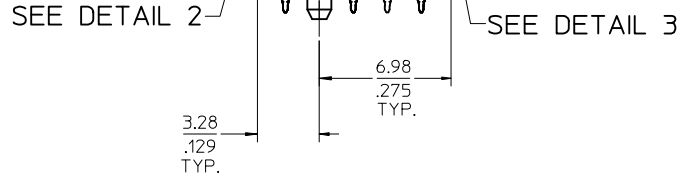
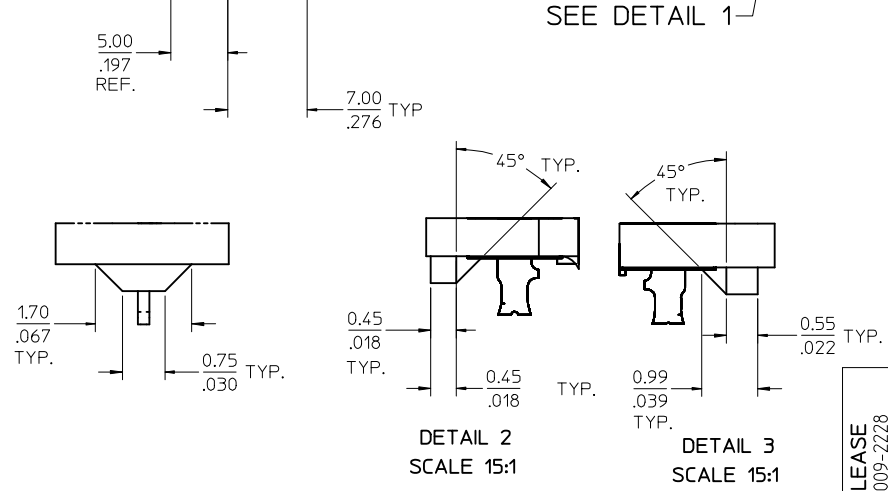
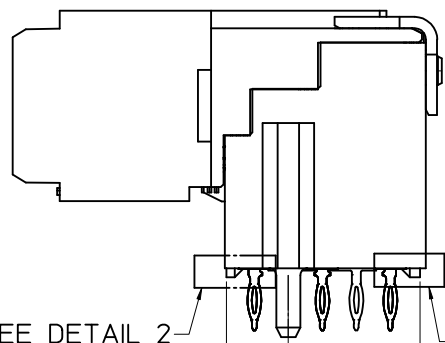
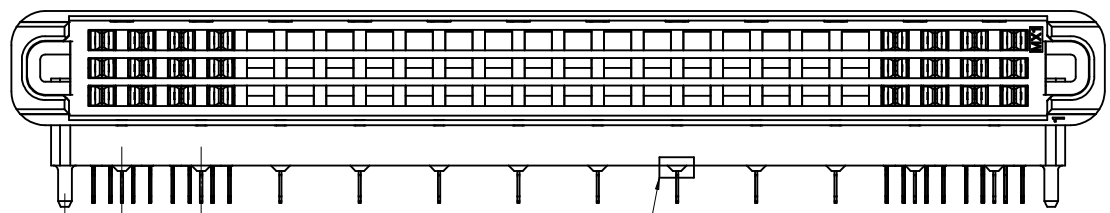


CIRCUIT A1  
IDENTIFIER

INITIAL RELEASE EC NO: UCP2009-2228 DRWIN@SIBARRA 2009/05/22 CHKD:SDANNELLEY 2009/06/05 APPR:SMILLER 2009/06/08	DESCRIPTION	QUALITY SYMBOLS	GENERAL TOLERANCES (UNLESS SPECIFIED)	DIMENSION STYLE	SCALE	DESIGN UNITS	THIRD ANGLE PROJECTION	
		▽=0	mm INCH	MM/IN	2:1	METRIC	THIRD ANGLE PROJECTION	
		▽=0	4 PLACES ± --- ± ---	DRAWN BY DATE	TITLE	PLATEAU HS DOCK FIXED CONNECTOR NO GROUND FINGER		
			3 PLACES ± --- ± .005	MIBARRA 2009/05/22	SEE TABLE			
		2 PLACES ± 0.13 ± .01	CHECKED BY DATE	MOLEX MOLEX INCORPORATED				
		1 PLACE ± 0.25 ± ---	SDANNELLEY 2009/05/22					
		ANGULAR ± 1/2°	APPROVED BY DATE	DOCUMENT NO.		SHEET NO.		
			SMILLER 2009/05/22	SEE TABLE		SD-75018-061		
				THIS DRAWING CONTAINS INFORMATION THAT IS PROPRIETARY TO MOLEX INCORPORATED AND SHOULD NOT BE USED WITHOUT WRITTEN PERMISSION				

ITEM NUMBER	CIRCUIT SIZE	NO. OF COLUMNS 'N'	CENTERLINE DIMENSION 'A' mm(in)	O/A HEIGHT DIMENSION 'B' mm(in)	O/A LENGTH DIMENSION 'C' mm(in)	PEG TO PEG DIMENSION 'D' mm(in)	FIRST-LAST DIMENSION 'E' mm(in)	WALL TO WALL DIMENSION 'F' mm(in)
75018-6016	120	40	4.74 (.187)	9.78 (.385)	82.50 (3.248)	73.00 (2.874)	68.00 (2.677)	72.30 (2.846)
75018-6021	144	48	4.74 (.187)	9.78 (.385)	96.50 (3.799)	87.00 (3.425)	82.00 (3.228)	86.32 (3.398)
75018-6022	144	48	5.74 (.226)	10.78 (.424)	96.50 (3.799)	87.00 (3.425)	82.00 (3.228)	86.32 (3.398)
75018-6023	144	48	8.74 (.344)	13.78 (.543)	96.50 (3.799)	87.00 (3.425)	82.00 (3.228)	86.32 (3.398)
75018-6026	120	40	4.74 (.187)	9.78 (.385)	82.50 (3.248)	73.00 (2.874)	68.00 (2.677)	72.30 (2.846)
75018-6024	108	36	4.74 (.187)	9.78 (.385)	75.50 (2.972)	66.00 (2.598)	61.00 (2.402)	65.29 (2.570)
75018-6025	108	36	8.74 (.344)	13.78 (.543)	75.50 (2.972)	66.00 (2.598)	61.00 (2.402)	65.29 (2.570)
75018-6027	108	36	5.74 (.226)	10.78 (.424)	75.50 (2.972)	66.00 (2.598)	61.00 (2.402)	65.29 (2.570)
75018-6029	120	40	5.74 (.226)	10.78 (.424)	82.50 (3.248)	73.00 (2.874)	68.00 (2.677)	72.30 (2.846)

NOTE: THIS ITEM NUMBER HAS ONLY SIGNAL PINS

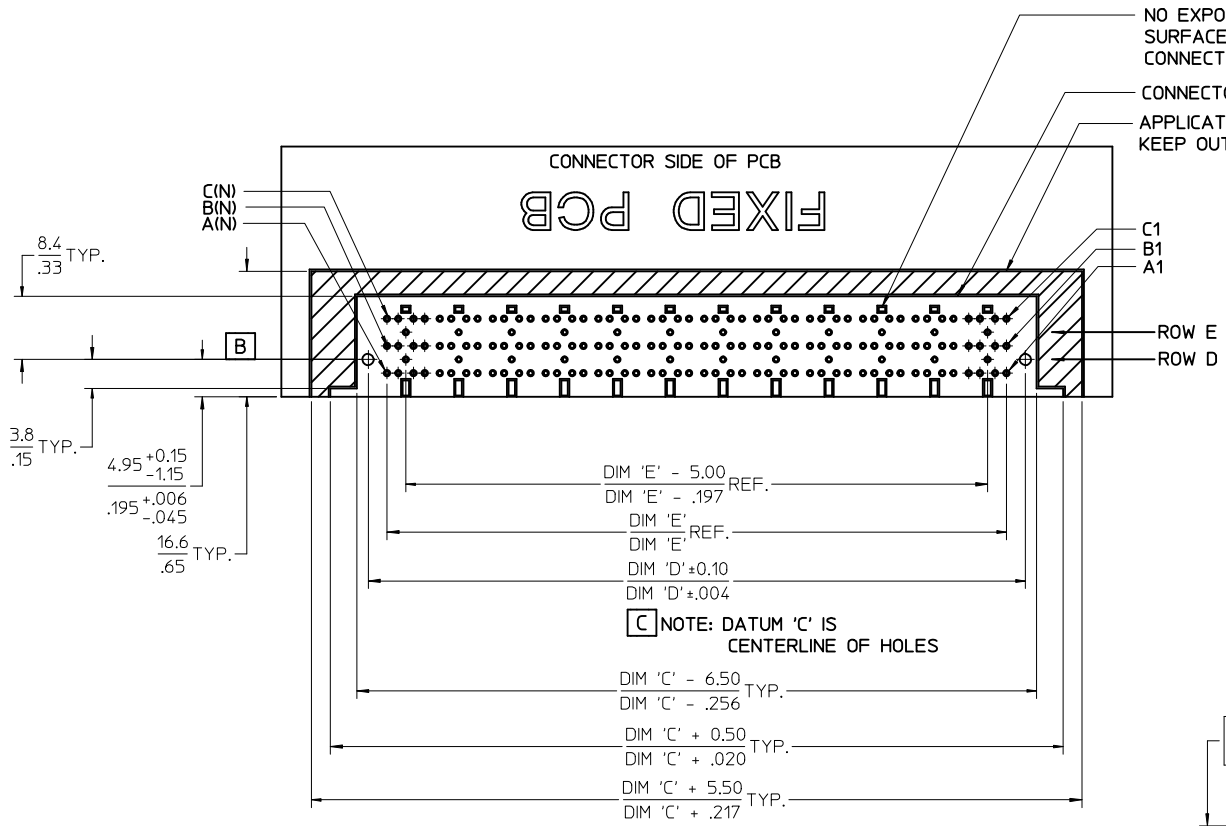


DETAIL 1  
SCALE 15:1

DETAIL 2  
SCALE 15:1

DETAIL 3  
SCALE 15:1

<b>INITIAL RELEASE</b> EC NO: UCP2009-2228 DRWN:MS BARRA 2009/05/22 CHKD:SDANNELLEY 2009/06/05 APPR:SMILLER 2009/06/08	DESCRIPTION PLATEAU HS DOCK FIXED CONNECTOR	QUALITY SYMBOLS ▽=0 ▽=0	GENERAL TOLERANCES (UNLESS SPECIFIED)		DIMENSION STYLE <b>MM/IN</b>	SCALE <b>3:1</b>	DESIGN UNITS <b>METRIC</b>	THIRD ANGLE PROJECTION	
			mm	INCH	DRAWN BY MIBARRA	DATE 2009/05/22	<b>PLATEAU HS DOCK FIXED CONNECTOR NO GROUND FINGER</b>  <b>MOLEX INCORPORATED</b> MATERIAL NO. SD-75018-061 DOCUMENT NO. SD-75018-061 SHEET NO. 2 OF 3		
		4 PLACES ± --- ± ---	± ---	± ---	CHECKED BY SDANNELLEY	DATE 2009/05/22			
		3 PLACES ± --- ± .005	± .005	± .01	APPROVED BY SMILLER	DATE 2009/05/22			
2 PLACES ± 0.13 ± .01	± .01	± ---							
1 PLACE ± 0.25 ± ---	± ---	ANGULAR ± 1/2°	DRAFT WHERE APPLICABLE MUST REMAIN WITHIN DIMENSIONS		SEE TABLE				



CIRCUIT DESIGNATION

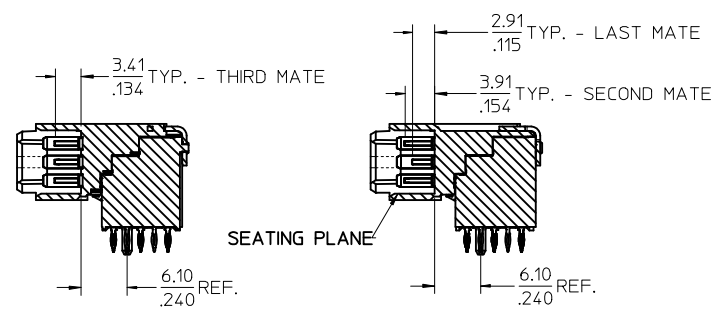
FIRST MATE: HOUSING - SIGNAL GROUND  
 SECOND MATE: A1, C1, A(N), C(N) (FOR POWER RETURN)  
 THIRD MATE: A2, B2, C2, A(N-1), B(N-1), C(N-1) & ALL OTHERS (A2, C2, A(N-1) & C(N-1) FOR POWER) (ALL OTHERS SIGNAL)  
 LAST MATE: B1, B(N) (FOR CARD DETECT)

ALL COLUMNS FROM 3 THROUGH (N-2) ARE SUITABLE FOR DIFFERENTIAL PAIRS  
 EG: A3-A4, B3-B4, C3-C4, A(N-2)-A(N-3), B(N-2)-B(N-3)

SIGNAL GROUND: ROWS D & E

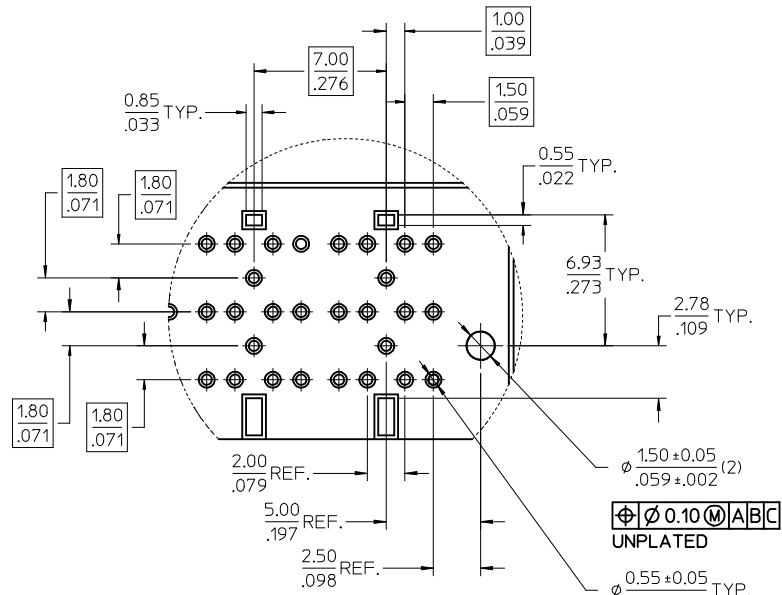
NOMINAL WIPE - FULL SEATED

FIRST MATE: 5.2mm  
 SECOND MATE: 2.7mm  
 THIRD MATE: 2.2mm  
 LAST MATE: 1.7mm



SECTION Y-Y

SECTION Z-Z



DETAIL X  
SCALE 5:1

INITIAL RELEASE EC NO: UCP2009-2228 DRWN:MS BARRA 2009/05/22 CHKD:SDANNELLEY 2009/06/05 APPR:SMILLER 2009/06/08	QUALITY SYMBOLS ▽=0 ▽=0	GENERAL TOLERANCES (UNLESS SPECIFIED)		DIMENSION STYLE	SCALE	DESIGN UNITS	THIRD ANGLE PROJECTION
		mm	INCH	MM/IN	2:1	METRIC	
REV A	DESCRIPTION	4 PLACES	± ---	± ---	DRAWN BY	DATE	PLATEAU HS DOCK FIXED CONNECTOR NO GROUND FINGER
		3 PLACES	± ---	± .005	MIBARRA	2009/05/22	
		2 PLACES	± 0.13	± .01	CHECKED BY	DATE	MOLEX INCORPORATED
		1 PLACE	± 0.25	± ---	SDANNELLEY	2009/05/22	
		ANGULAR ± 1/2°		APPROVED BY	DATE	SD-75018-061	
		DRAFT WHERE APPLICABLE MUST REMAIN WITHIN DIMENSIONS		SMILLER	2009/05/22	SHEET NO. 3 OF 3	
		SEE TABLE		MATERIAL NO.	DOCUMENT NO.	THIS DRAWING CONTAINS INFORMATION THAT IS PROPRIETARY TO MOLEX INCORPORATED AND SHOULD NOT BE USED WITHOUT WRITTEN PERMISSION	