

PART NUMBER	REV	FIRST USED	TERMINATOR	FEED TYPE	DESCRIPTION
1529157-1	A	-	BENCH & LEADMAKER	MECH POST FEED	HD-I APPLICATOR
7-1529157-1	A	-	BENCH & LEADMAKER	MECH POST FEED	-1 AND SPARE PARTS
7-1529157-7	A	-	-	-	SPARE PARTS KIT

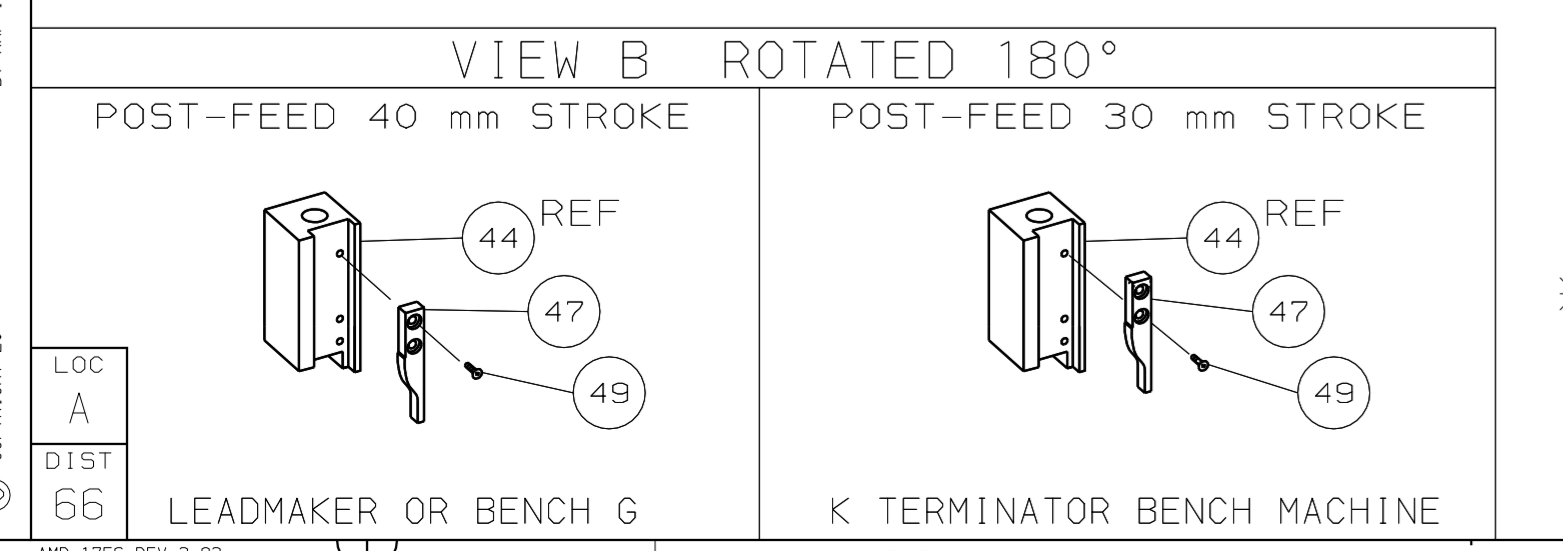
CRIMP DATA AMP TERMINAL AMP CRIMP SPECS			
TERMINAL NAME: RING TONGUE			
CRIMP	SIZE	TYPE	RANGE
WIRE	3.30 [.130 IN]	F	18-14 AWG (0.80-2.10mm ²)
INSUL	4.57 [.180 IN]	F	2.50-3.50 [.100-.140 IN]
WIRE STRIP LENGTH		APPL INSTRUCTION	
4.80-5.60 [.189-.220 IN]		408-8323 & 408-8490	
TERMINAL APPL SPEC		FEED	
114-2084		21.72 [.855 IN]	

TERMINALS APPLIED				
737161	-	-	-	-
-	-	-	-	-
-	-	-	-	-
-	-	-	-	-
-	-	-	-	-
-	-	-	-	-
-	-	-	-	-
-	-	-	-	-
-	-	-	-	-
-	-	-	-	-

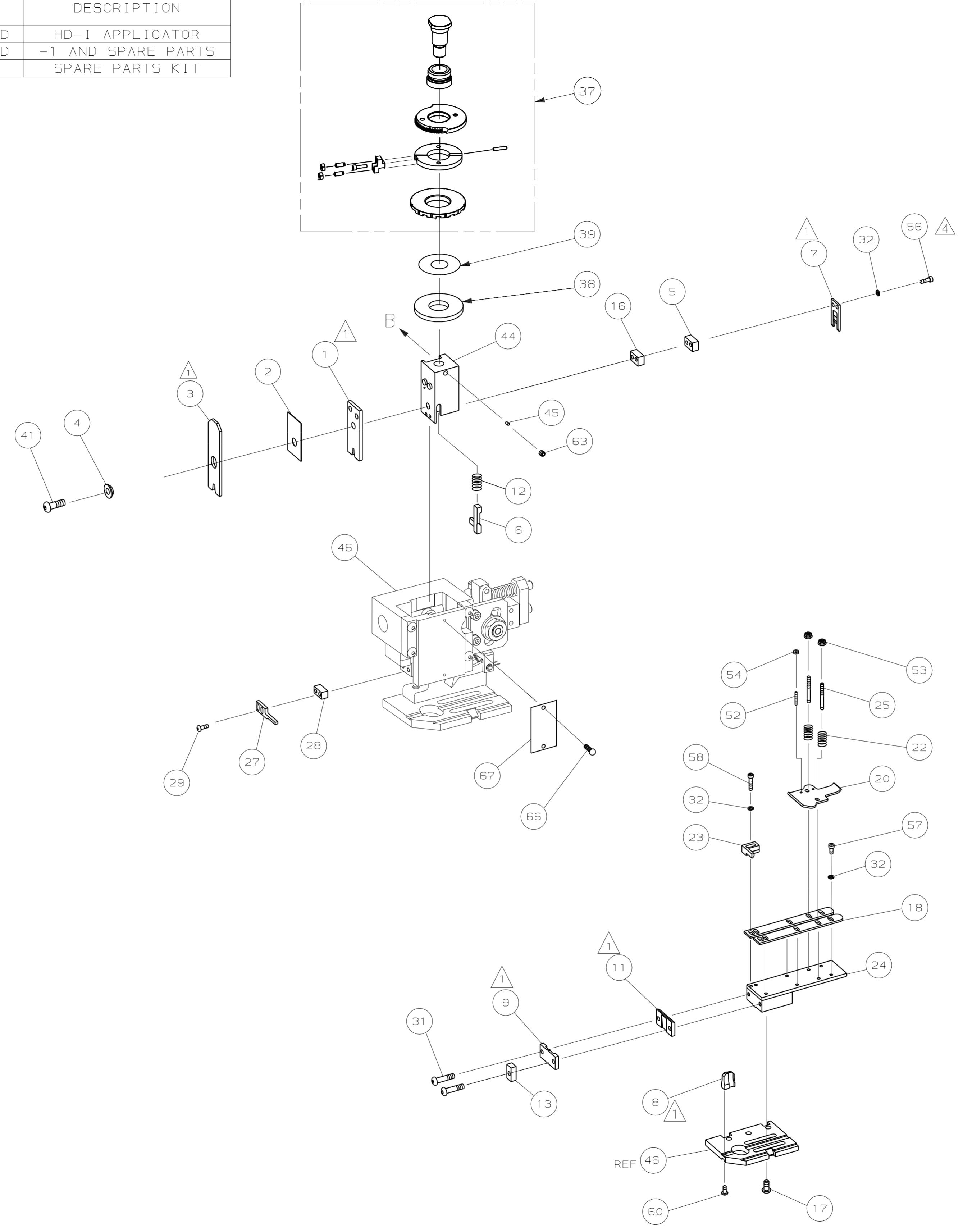
WIRE SIZE mm ² AWG	CRIMP HEIGHT	REF SETTING
14 AWG	1.90 ±0.05 [.075 ±.002 IN]	A8
16 AWG	1.70 ±0.05 [.067 ±.002 IN]	C0
18 AWG	1.57 ±0.05 [.062 ±.002 IN]	C9
-	-	-
-	-	-
-	-	-
-	-	-
-	-	-
-	-	-

LAYOUT L1529157	SET UP GAGE 458638-3
-	-
-	-
-	-
-	-
-	-
-	-
-	-
-	-
-	-
-	-
-	-
-	-
-	-
-	-

- RECOMMENDED SPARE PARTS.
- 2. GREASE RAM, CAM, CAM FOLLOWER AND FEED ROD LIGHTLY.
- 3. LUBRICATE DAILY PER THE APPLICATOR INSTRUCTION SHEET SUPPLIED WITH THE APPLICATOR.
- CUT TO LENGTH AT ASSY.



*** WARNING:**
ON INSTALLATION, SET WIRE DISC TO LARGEST WIRE SIZE SETTING.
USE OF SETTINGS BELOW MIN REQ'D CRIMP HEIGHT SETTING WILL
CAUSE DAMAGE TO CRIMP TOOLING.



QTY	REQD	PER	ASSY	PART NO	DESCRIPTION	ITEM NO
-	1	1	1529157	PRINT, APPLICATOR LOG SHEET	73	
-	1	1	1338705-4	DOCUMENTATION PACKAGE	72	
-	-	-	-	-	70	
-	-	-	-	-	68	
-	1	1	461264-5	PLATE, IDENTIFICATION	67	
-	2	2	21017-2	SCR,DRIVE (#2X.19) ID PLATE	66	
-	-	-	-	-	64	
-	1	1	3-18031-0	SCR,SKT SET (M6X6) RAM	63	
-	-	-	-	-	62	
-	-	-	-	-	61	
-	1	1	18024-7	SCR,BHC (M4X10) ANVIL	60	
-	-	-	-	-	59	
-	2	2	1-18023-3	SCR,SHC (M4X16) HOLD DOWN	58	
-	5	5	18023-9	SCR,SHC (M4X6) STRIP GUIDE	57	
-	2	2	9-18023-6	SCR,SHC (M4X14) SLUG BLADE	56	
-	-	-	-	-	55	
-	2	2	18029-1	NUT, HEX (M3) DRAG	54	
-	2	2	986965-1	NUT, HEX SL (M4) DRAG STUD	53	
-	2	2	2-18032-2	SCR,SKT SET (M3X10) DRAG	52	
-	-	-	-	-	51	
-	-	-	-	-	50	
-	1	1	18024-3	SCR,BHC (M3X10) CAM	49	
-	-	-	-	-	48	
-	1	1	1338676-1	CAM, POST-FEED 30 & 40 mm ST	47	
-	1	1	1338662-1	APPLICATOR, BASIC (SUBASSY)	46	
-	1	1	690191-1	PLUG, NYLON	45	
-	1	1	1320998-1	RAM	44	
-	-	-	-	-	43	
-	-	-	-	-	42	
-	1	1	2-18024-6	SCREW,BHC (M8X25) CRIMPER	41	
-	-	-	-	-	40	
-	1	1	690125-1	SHIM SUBASSY	39	
-	1	1	469367-1	SPACER, FINE ADJUST	38	
-	1	1	879103-3	FINE ADJUST HEAD SUBASSY	37	
-	-	-	-	-	36	
-	-	-	-	-	35	
-	-	-	-	-	34	
-	-	-	-	-	33	
-	9	9	18025-2	WASHER, LOCK (M4) SHEAR BL	32	
-	2	2	1-18024-0	SCR,BHC (M4X20) SHEAR PL	31	
-	-	-	-	-	30	
-	2	2	18024-8	SCR,BHC (M4X12) STRIPPER	29	
-	1	1	3-690451-2	SPACER, STRIPPER	28	
-	1	1	240639-1	STRIPPER	27	
-	-	-	-	-	26	
-	2	2	1320906-1	DRAG, STUD	25	
-	1	1	1320995-1	PLATE, STRIP GUIDE	24	
-	1	1	240825-2	PLATE, STRIP HOLD DOWN	23	
-	2	2	4-22281-1	SPRING, DRAG	22	
-	-	-	-	-	21	
-	1	1	1338665-1	DRAG, STOCK	20	
-	-	-	-	-	19	
-	2	2	1338663-5	GUIDE, LOWER STRIP	18	
-	4	4	1-18024-8	SCR,BHC (M6X12) STRIP GD PL	17	
-	1	1	1338708-1	SPACER, SLUG BLADE	16	
-	-	-	-	-	15	
-	-	-	-	-	14	
-	1	1	3-690481-0	SPACER, HOLD DOWN	13	
-	1	1	23846-1	SPRING, HOLD DOWN	12	
-	1	1	240644-1	PLATE, REAR SHEAR	11	
-	-	-	-	-	10	
-	1	1	690482-8	PLATE, FRONT SHEAR	9	
-	1	2	1	1333221-8	ANVIL	8
-	1	1	1	690474-0	BLADE, SLUG	7
-	1	1	1	455892-7	HOLD DOWN, TERMINAL	6
-	1	1	3-240641-1	SPACER, SLUG BLADE	5	
-	1	1	238009-1	SPACER, BLOCK CRIMPER	4	
-	1	2	1	4-456134-6	CRIMPER, INSULATION	3
-	1	1	1	455888-6	SPACER, CRIMPER	2
-	1	2	1	456424-4	CRIMPER, WIRE	1

REVISION OF EACH ASSY NO (WHEN BLANK, USE DWG REVISION)

QTY REQD PER ASSY

PARTS LIST

DIMENSIONS: mm [INCHES] MATL - HT TR - FIN -

DO NOT SCALE PRINT.

TOLERANCES UNLESS OTHERWISE SPECIFIED:

1 PLC DEC ± -

2 PLC DEC ± -

3 PLC DEC ± -

ANGLES ± -

SURF TEXTURE: REMOVE BURRS, BREAK SHARP EDGES RO.38 MAX

DR L.L.OFFHOUSE 11 JUL 05 APP F.BACKHURST 11 JUL 05

CHK - REL 28-07-05 M.CLIFFORD

AMP Tyco Electronics Harrisburg, PA 17105-3608

NAME FINE ADJ END FD HD-I APPL MACHINE REF HD-I APPL

SCALE - DWG NO 1529157 SHEET 1 OF 1 REV A

LOC A

DIST 66

AMP 1756 REV 3-92 28-JUL-05 09:07:54 eb003420

CAGE CODE 00779 CUSTOMER AND ASSEMBLY DRAWING

THIS DRAWING IS A CONTROLLED DOCUMENT.

RELEASABLE FOR PUBLICATION BY AMP INCORPORATED. ALL RIGHTS RESERVED.

THIS DRAWING IS UNPUBLISHED.

1529157