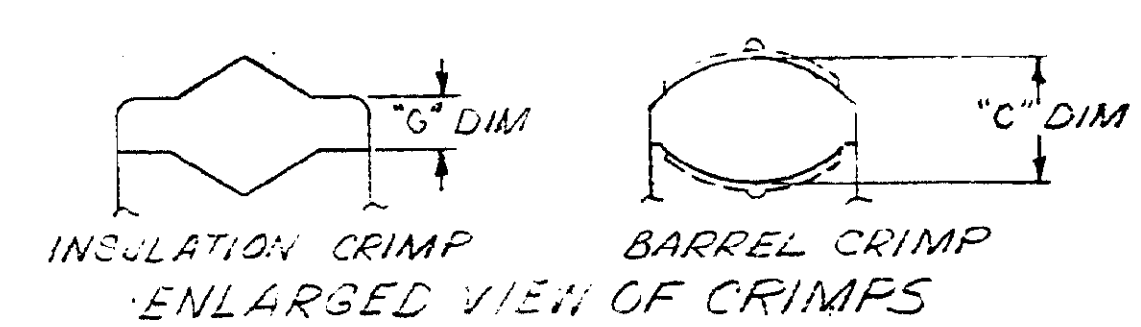
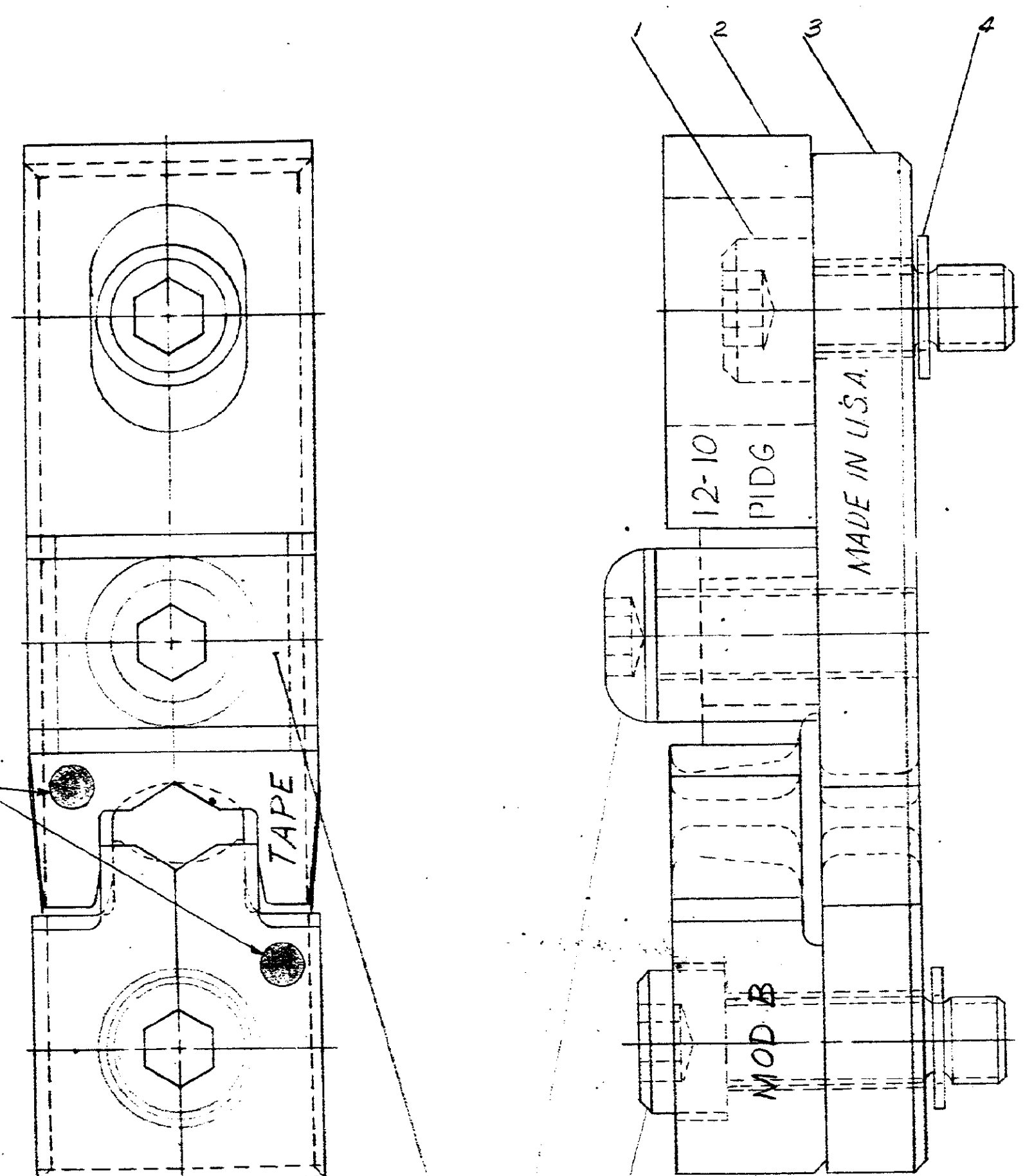
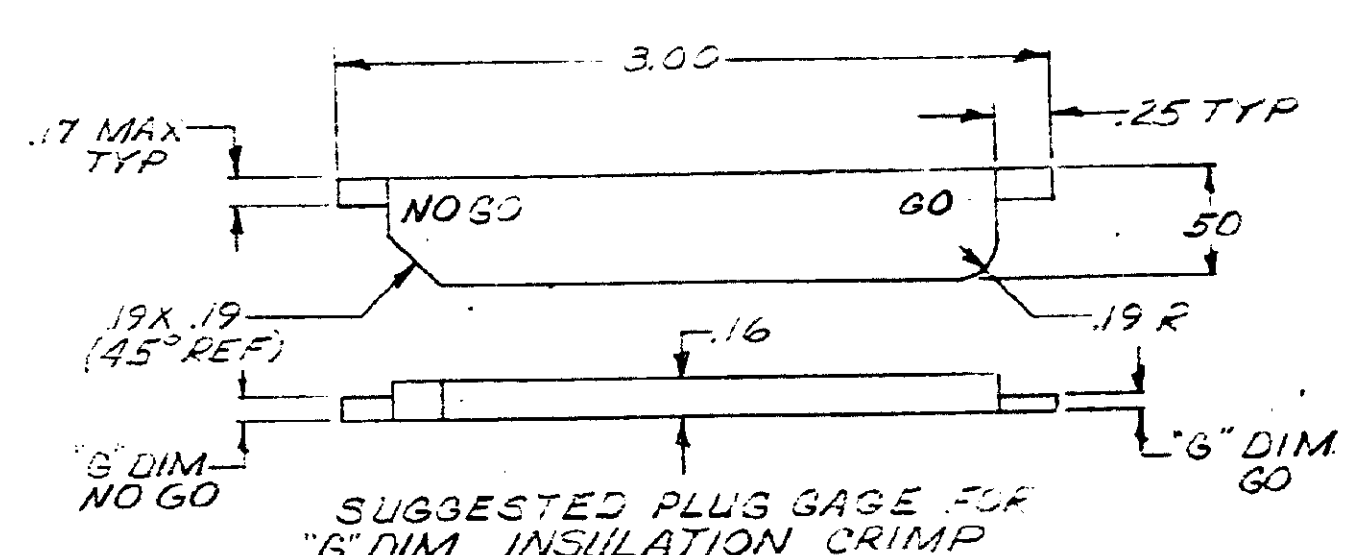
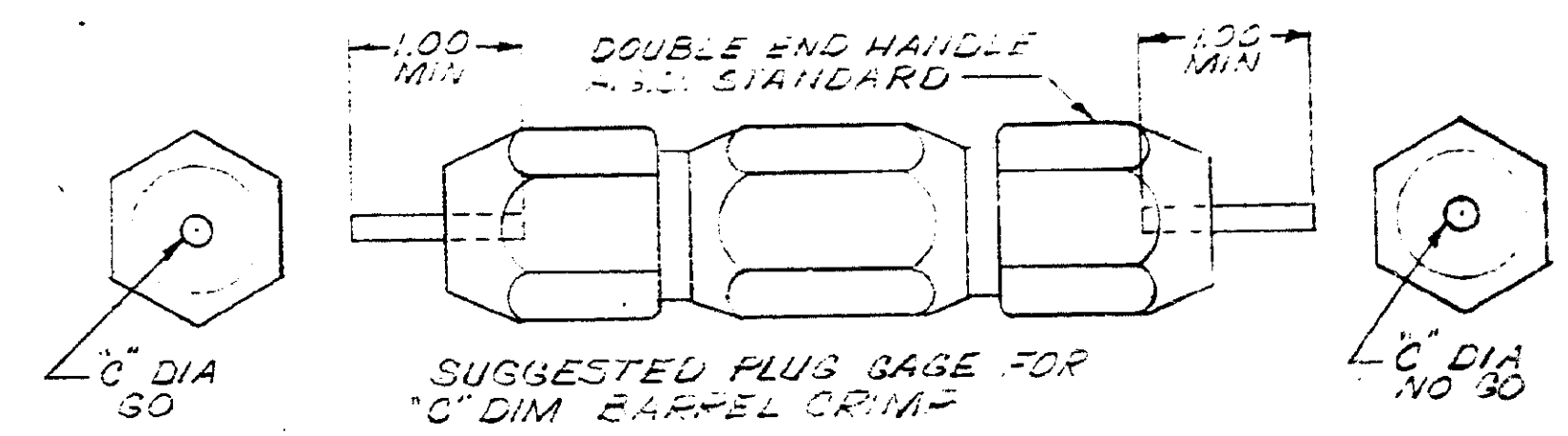


PLUG GAGE DIMENSIONS APPLY WHEN TOOL IS BOTTOMED BUT NOT UNDER PRESSURE.

NUMBER 69874



"G" DIM AT POS #1		"C" DIM	
GO	NO GO	GO	NO GO
.064	.084	.169	.175



SUPERSEDED BY IS-2423

1	307275-2	SADDLE	9
1	2-57377-8	SCREW (10-32 UNF-3A X .562 LONG)	8
1	59781-5	SCREEN-SPECIAL	7
1	1-59619-2	ANVIL-INSULATION	6
1	59623-4	ANVIL	5
2	1-21046-3	PINS-RETAINING	4
1	59779-1	INDENTER	3
1	307276-1	INDENTER-INSULATION	2
1	59781-1	SCREW-SPECIAL	1

REQUIRED PER ASSEMBLY	NUMBER	NAME	REMARKS	ITEM NO.
©1969 BY AMP INCORPORATED. ALL RIGHTS RESERVED. AMP PRODUCTS COVERED BY PATENTS AND/OR PATENTS PENDING.				
DATE: <u>E. Shenfeld 11-24-69</u> BY: <u>J.P. Jurgens 12-1-69</u> DE: <u>J.P. Jurgens 12-1-69</u>			CUSTOMER COPY REFERENCE ONLY AMP AMP INCORPORATED HARRISBURG, PENNA. USED ON 69875 PRE-INSUL DIAMOND GRIP CONFINED-CRESCENT	
WIRE - RANGE - INSULATION 12-10 + + TOLERANCE EXCEPT AS NOTED ± .015 ± .010			SCALE: 4-1 LDC: MCI NO. 69874 REV: 31	
DESCRIPTION			DIE ASSEMBLY MOD B	

REVISION RECORD	DATE
1	7-28
2	12-1-69

DIMENSIONS IN INCHES DO NOT SCALE PRINT