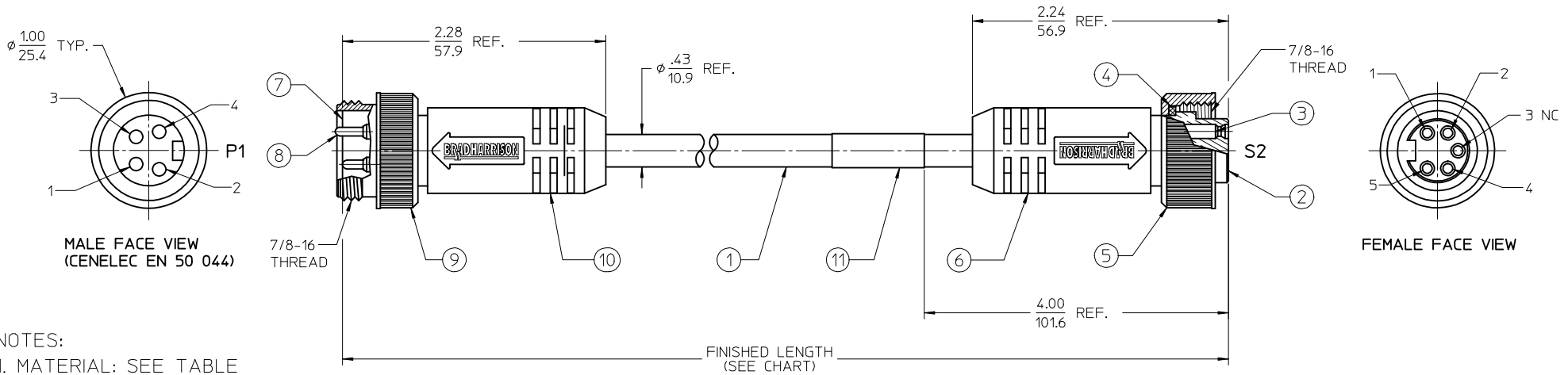


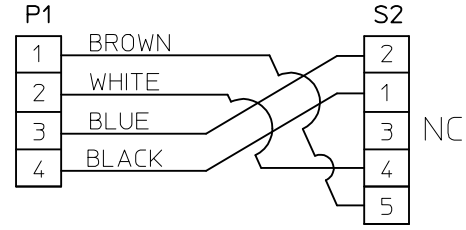
MATERIAL NO.	ENGINEERING NO.	FINISHED LENGTH
1300090845	130009-0846-M010	3'3" (1M)
1300090846	130009-0846-M020	6'7" (2M)
1300090847	130009-0846-M030	9'10" (3M)
1300090848	130009-0846-M040	13'1" (4M)
1300090849	130009-0846-M050	16'5" (5M)
1300090862	130009-0846-M060	19'8" (6M)
1300090850	130009-0846-M080	26'3" (8M)
1300090851	130009-0846-M100	32'10" (10M)
1300090852	130009-0846-M003	0'11.8" (0.3M)
1300090853	130009-0846-M006	1'11.6" (0.6M)

PART NO. LEGEND
1300090845-M010

FINISHED LENGTH
M005= 0.5 METER
M010= 1 METER
M100= 10 METERS



- NOTES:**
- MATERIAL: SEE TABLE
 - FINISHES: SEE TABLE
 - ELECTRICAL SPECIFICATIONS
VOLTAGE RATING: 400V PER IEC60664
600V PER UL2238
CURRENT RATING: 10 AMPS
 - PROTECTION: IP67 (WHEN MATED)
 - ASSEMBLY IS RoHS COMPLIANT BY EXEMPTION
 - AGENCY: UL PENDING.



CABLE LENGTH TOLERANCES

>.3M [1FT]:	+19mm-0 [+1.75in-0]
.3 - .9M [1 - 3FT]:	+44.5mm-0 [+1.75in-0]
.9 - 1.8M [3 - 6FT]:	+55.6mm-0 [+2.19in-0]
1.8 - 3.7M [6 - 12FT]:	+88.9mm-0 [+3.50in-0]
3.7 - 7.3M [12 - 24FT]:	+165.1mm-0 [+6.50in-0]
7.3-14.6M [24 - 48FT]:	+317.5mm-0 [+12.50in-0]
14.6 - 30.5M [48-100FT]:	+622.3mm-0 [+24.50in-0]
OVER 30M [100FT]	+2% OF FINISHED LENGTH

TABLE

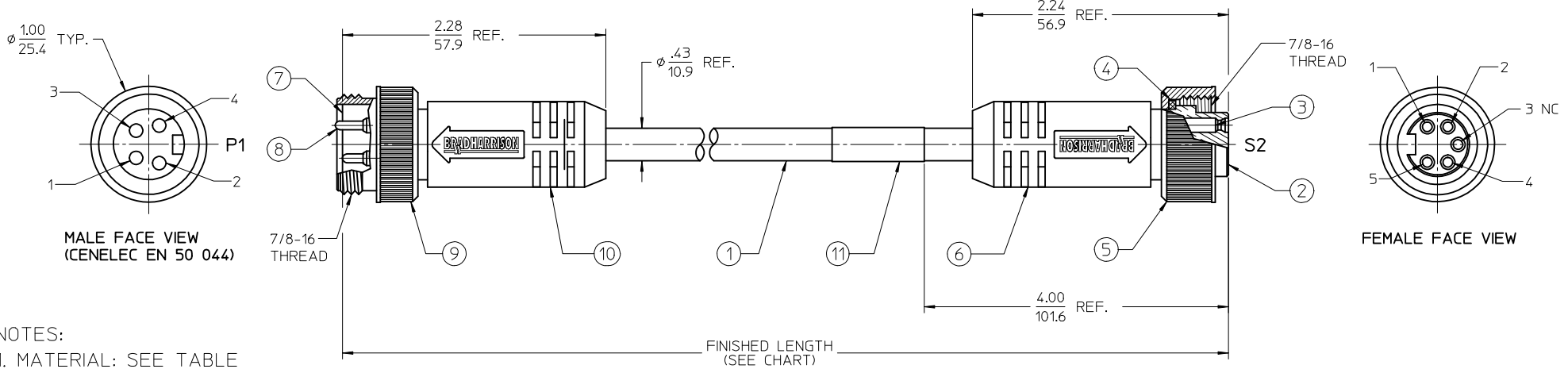
ITEM	DESCRIPTION	MATERIAL	FINISH
11	WRAP PABEL	VINYL	BLACK/YELLOW
10	OVERMOLD	TPE	YELLOW
9	COUPLING, MALE	ZINC DIE-CAST	BLACK E-COAT
8	CONTACT PIN, 16 AWG	Cu ALLOY	GOLD PLATED
7	INSERT, 4P MALE	TPE	YELLOW
6	OVERMOLD	TPE	YELLOW
5	COUPLING, FEMALE	ZINC DIE-CAST	BLACK E-COAT
4	FRICTION RING	NYLON	WHITE
3	CONTACT SOCKET, 16 AWG	Cu ALLOY	GOLD PLATED
2	INSERT, 5P, FEMALE	TPE	YELLOW
1	CABLE, 16/4, 90°C, 600V	TPE JACKET	YELLOW
ITEM	DESCRIPTION	MATERIAL	FINISH

REPLACEMENT FOR RSD-09009-05 EC NO: IPG2018-0182 DRW:AAKHTAR 2017/09/19 CHK:DRSTONE 2017/09/19 APPR:BWODMAN 2017/09/21 REV A	QUALITY SYMBOLS ▽=0 ▽=0	GENERAL TOLERANCES (UNLESS SPECIFIED) mm INCH 4 PLACES ± --- ± --- 3 PLACES ± --- ± --- 2 PLACES ± --- ± .01 1 PLACE ± 0.3 ± --- 0 PLACE ± --- ± --- ANGULAR ± ---°	DIMENSION STYLE IN/MM DRAWN BY AAKHTAR DATE 2017/09/19 CHECKED BY DATE APPROVED BY BWODMAN DATE 2017/09/21 MATERIAL NO. SEE CHART	SCALE 1:1.33 DESIGN UNITS INCH THIRD ANGLE PROJECTION	DOCUMENT NO. SD-130009-017 SHEET NO. 1 OF 1
	MINI-CHANGE CORD ASSY 4P MALE TO 5P FEMALE 16/4 TPE SPECIAL molex				
	THIS DRAWING CONTAINS INFORMATION THAT IS PROPRIETARY TO MOLEX INCORPORATED AND SHOULD NOT BE USED WITHOUT WRITTEN PERMISSION				
	DRAFT WHERE APPLICABLE MUST REMAIN WITHIN DIMENSIONS				

MATERIAL NO.	ENGINEERING NO.	FINISHED LENGTH
1300090845	130009-0846-M010	3'3" (1M)
1300090846	130009-0846-M020	6'7" (2M)
1300090847	130009-0846-M030	9'10" (3M)
1300090848	130009-0846-M040	13'1" (4M)
1300090849	130009-0846-M050	16'5" (5M)
1300090862	130009-0846-M060	19'8" (6M)
1300090850	130009-0846-M080	26'3" (8M)
1300090851	130009-0846-M100	32'10" (10M)
1300090852	130009-0846-M003	0'11.8" (0.3M)
1300090853	130009-0846-M006	1'11.6" (0.6M)

PART NO. LEGEND
1300090845-M010

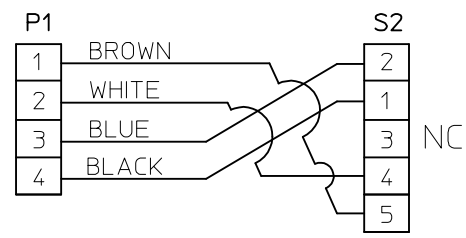
FINISHED LENGTH
M005= 0.5 METER
M010= 1 METER
M100= 10 METERS



- NOTES:**
1. MATERIAL: SEE TABLE
 2. FINISHES: SEE TABLE
 3. ELECTRICAL SPECIFICATIONS
VOLTAGE RATING: 400V PER IEC60664
600V PER UL2238
CURRENT RATING: 10 AMPS
 4. PROTECTION: IP67 (WHEN MATED)
 5. ASSEMBLY IS RoHS COMPLIANT BY EXEMPTION
 6. AGENCY: UL PENDING.

TABLE

ITEM	DESCRIPTION	MATERIAL	FINISH
11	WRAP PABEL	VINYL	BLACK/YELLOW
10	OVERMOLD	TPE	YELLOW
9	COUPLING, MALE	ZINC DIE-CAST	BLACK E-COAT
8	CONTACT PIN, 16 AWG	Cu ALLOY	GOLD PLATED
7	INSERT, 4P MALE	TPE	YELLOW
6	OVERMOLD	TPE	YELLOW
5	COUPLING, FEMALE	ZINC DIE-CAST	BLACK E-COAT
4	FRICTION RING	NYLON	WHITE
3	CONTACT SOCKET, 16 AWG	Cu ALLOY	GOLD PLATED
2	INSERT, 5P, FEMALE	TPE	YELLOW
1	CABLE, 16/4, 90°C, 600V	TPE JACKET	YELLOW



CABLE LENGTH TOLERANCES

>.3M [1FT]:	+19mm-0 [+1.75in-0]
.3 - .9M [1 - 3FT]:	+44.5mm-0 [+1.75in-0]
.9 - 1.8M [3 - 6FT]:	+55.6mm-0 [+2.19in-0]
1.8 - 3.7M [6 - 12FT]:	+88.9mm-0 [+3.50in-0]
3.7 - 7.3M [12 - 24FT]:	+165.1mm-0 [+6.50in-0]
7.3-14.6M [24 - 48FT]:	+317.5mm-0 [+12.50in-0]
14.6 - 30.5M [48-100FT]:	+622.3mm-0 [+24.50in-0]
OVER 30M [100FT]	+2% OF FINISHED LENGTH

REPLACEMENT FOR RSD-09009-05 EC NO: IPG2018-0182 DRW:AAKHTAR 2017/09/19 CHK:DRSTONE 2017/09/19 APPR:BWODMAN 2017/09/21	QUALITY SYMBOLS ▽=0 ▽=0	GENERAL TOLERANCES (UNLESS SPECIFIED) <table border="1"> <thead> <tr> <th></th> <th>mm</th> <th>INCH</th> </tr> </thead> <tbody> <tr><td>4 PLACES</td><td>± ---</td><td>± ---</td></tr> <tr><td>3 PLACES</td><td>± ---</td><td>± ---</td></tr> <tr><td>2 PLACES</td><td>± ---</td><td>± .01</td></tr> <tr><td>1 PLACE</td><td>± 0.3</td><td>± ---</td></tr> <tr><td>0 PLACE</td><td>± ---</td><td>± ---</td></tr> </tbody> </table>		mm	INCH	4 PLACES	± ---	± ---	3 PLACES	± ---	± ---	2 PLACES	± ---	± .01	1 PLACE	± 0.3	± ---	0 PLACE	± ---	± ---	DIMENSION STYLE IN/MM	SCALE 1:1.33	DESIGN UNITS INCH	THIRD ANGLE PROJECTION
		mm	INCH																					
	4 PLACES	± ---	± ---																					
	3 PLACES	± ---	± ---																					
2 PLACES	± ---	± .01																						
1 PLACE	± 0.3	± ---																						
0 PLACE	± ---	± ---																						
DRAWN BY AAKHTAR	DATE 2017/09/19	CHECKED BY DATE	APPROVED BY BWODMAN	DATE 2017/09/21	MINI-CHANGE CORD ASSY 4P MALE TO 5P FEMALE 16/4 TPE SPECIAL 																			
DRAFT WHERE APPLICABLE MUST REMAIN WITHIN DIMENSIONS		MATERIAL NO. SEE CHART	DOCUMENT NO. SD-130009-017	SHEET NO. 1 OF 1																				
THIS DRAWING CONTAINS INFORMATION THAT IS PROPRIETARY TO MOLEX INCORPORATED AND SHOULD NOT BE USED WITHOUT WRITTEN PERMISSION																								