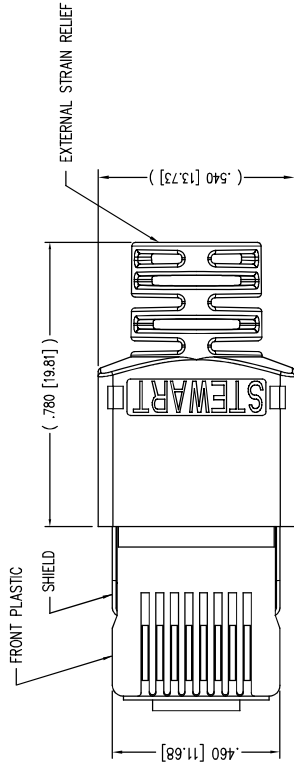
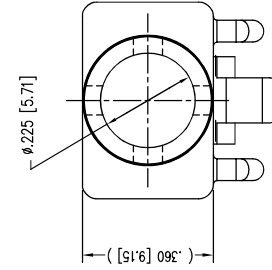
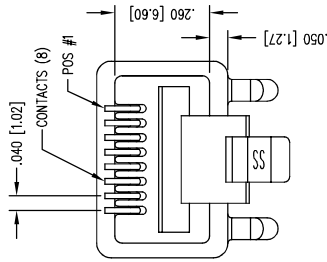


2



(SHOWN ASSEMBLED)

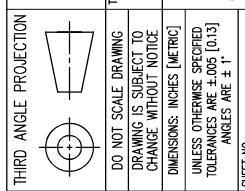
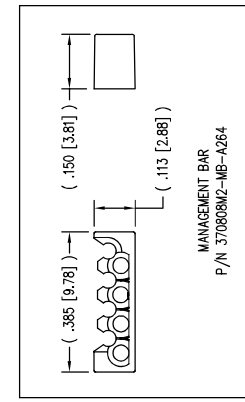
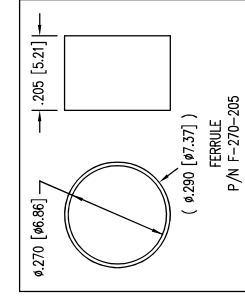


NOTES:

- 1- PLUG KIT CONSISTS OF :
PRE-INSERTED PLUG HOUSING & SHIELD
MANAGEMENT BAR
FERRULE
HOUSING
- 2- MATERIALS :
FRONT HOUSING PLASTIC : CLEAR POLYCARBONATE, UL 94-V0
MANAGEMENT BAR : CLEAR POLYCARBONATE, UL 94-V0
SHIELD : TIN PLATED BRASS
CONTACTS : PHOSPHOR BRONZE, SELECTIVE GOLD PLATING
FERRULE : NICKEL OR TIN PLATED BRASS
- 3- CONTACTS TERMINATE STRANDED & SOLID CONDUCTORS UP TO .042 [1.07] OUTSIDE DIAMETER OF INSULATION.
- 4- FOR PRODUCT SPECIFICATION SEE PROC26-01.
- 5- DIMENSIONS AND TOLERANCES COMPLY WITH TIA-1096 STANDARD.
- △ TERMINATED PLUG HEIGHT: .237 [6.02] ±.005 [0.13]
- 7- DESIGNED FOR CATEGORY 5/5e APPLICATIONS.

1

BULK	50 MICRO-INCHES [1.27um]	943-SP-370808SM2-A496
PACKAGE	CONTACT PLATING IN MATING AREA	PART NUMBER



11118 Susquehanna Trl, South
Glen Rock, PA 17327-9139
(717) 235-7512
<http://www.stewartconnector.com>

SHIELDED CAT 5 PLUG, 8 X 8 SHIELDED PLUG



2

AutoCAD

URN BY:	DAB	DATE:	11-11-02
APPD BY:	JRC	DATE:	11-13-02
DWG NO.:	CT370045	REV.:	B4

2

A

A

B

B