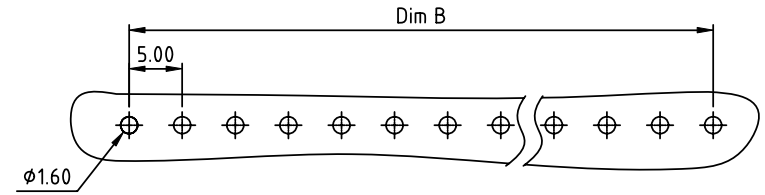
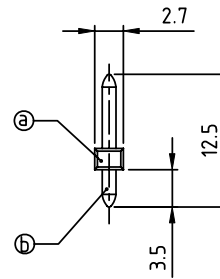
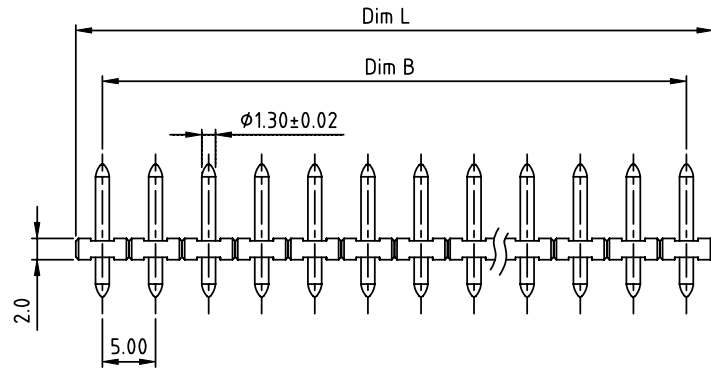


PRODUCT NUMBER	PITCH
OPxx00x000J0G	5.00 mm



RECOMMENDED P.C.B LAYOUT
TOP VIEW



- Material:
- Item (a) Terminal(housing): Thermoplastic (UL94V-0)
 - Item (b) Contact pin: Brass, Tin plated
- Electrical:
- UL / VDE / TUV
 - Voltage rating: 300V / 300V / 300V
 - Current rating: 15A / 12A / 15A
 - Withstanding Voltage: 1.6KV / 2.5KV / 2.5KV
 - Operating temperature: -40°C to +115°C
 - Soldering temperature: 260°C±5°C/5 Sec
 - Safety Approval:

N = Number of poles
Dim L=Nx5.0
Dim B=(N-1)x5.0

PART NO.: OP xx 00 x 0 00J0 G

- | | | | |
|---|--|---|-----------------|
| ↓ | 0 Tin plating 120u" Min RoHS compliant | ↓ | (lead<4%) |
| ↓ | 1 Gold plating 10u" | ↓ | In copper Alloy |
| ↓ | 2 Gold flash | | |
- Solid block
No. of poles
02 2 poles
03 3 poles
...
24 24 poles

poles	Tolerance
2-5p	±0.10
6-9p	±0.15
10-13p	±0.20
14-17p	±0.25
18-21p	±0.30
22-24p	±0.40

mat'l. code		surface ASME Y14.5	tolerance ASME Y14.5	projection 	product family TERMINAL BLOCK
ltr	ecn no	dr	date	tolerances unless otherwise specified	title TERMINAL BLOCK
				angles ϕ E	← MM →
				X*±1"	scale PLUGGABLE SOCKET, VERTICAL, 12.5mm HEIGHT
		dr	EVIN ZHONG	041714	dwg no sheet 1 of 1 size
		enr	EVIN ZHONG	041714	OPxx00x000J0G
		chr	HANKE FENG	041714	A4
		appd	SHI JUN	041714	type CUSTOMER Drawing
sheet index	revision	A			
	sheet	1			