

# Customer Information Sheet

DRAWING No.: S1971-46R

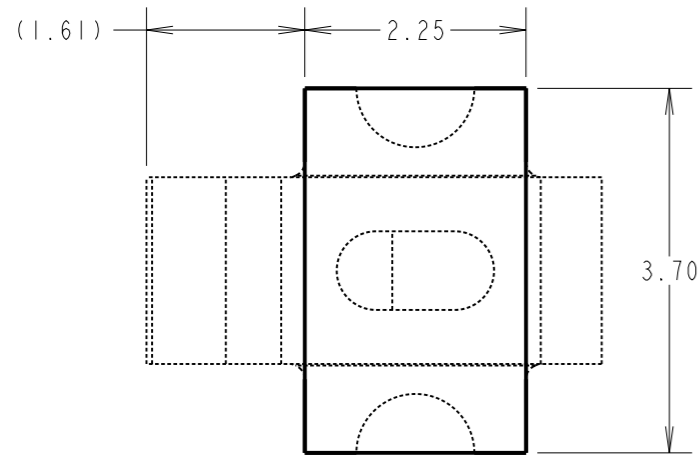
IF IN DOUBT - ASK

©

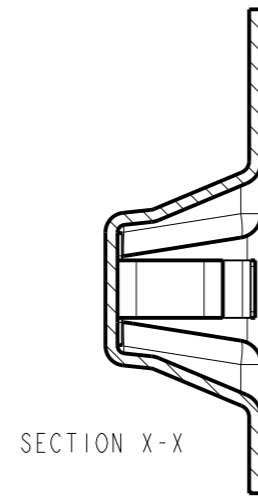
NOT TO SCALE

THIRD ANGLE PROJECTION

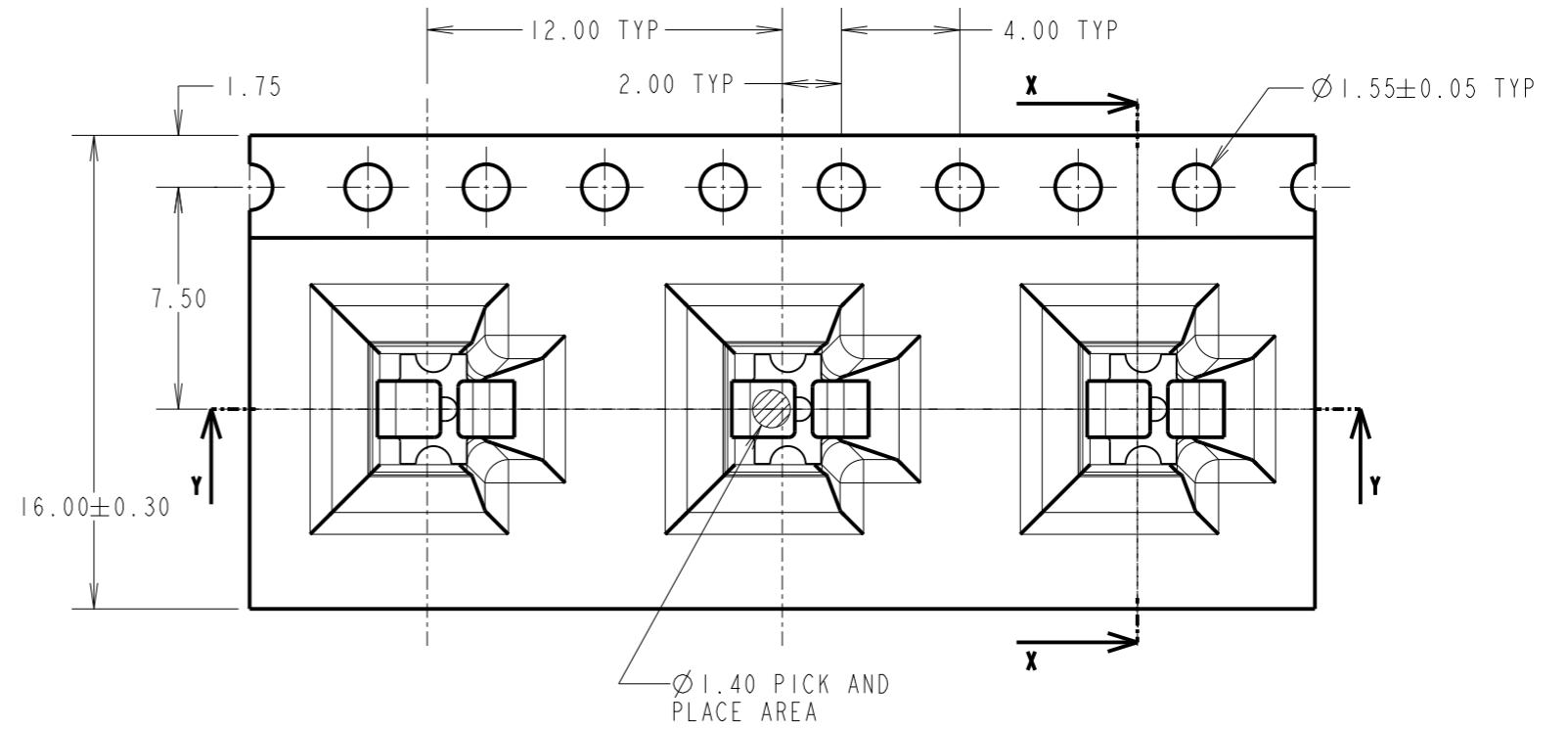
ALL DIMENSIONS IN mm



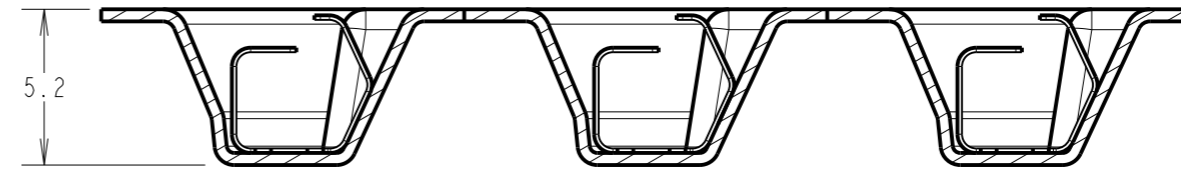
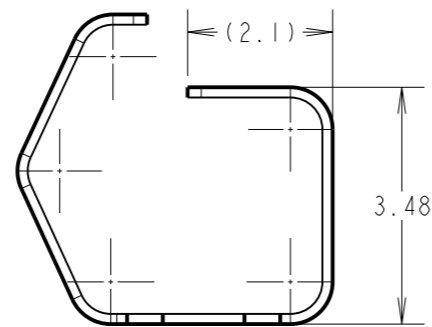
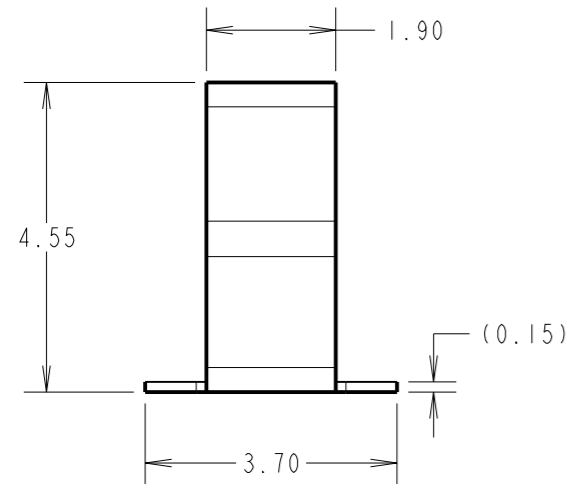
RECOMMENDED PCB PAD LAYOUT  
(TOLERANCES  $\pm 0.05$ )



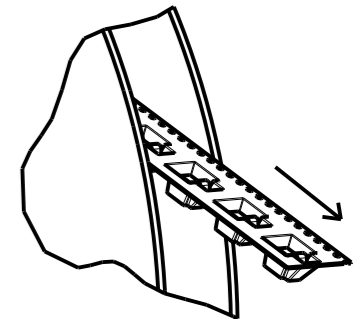
SECTION X-X



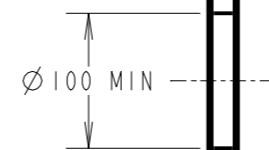
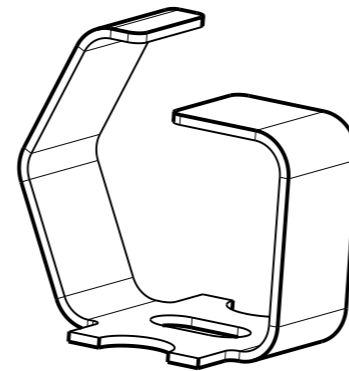
- NOTES:  
 1. QUANTITY OF COMPONENTS PER REEL = 1000.  
 2. THIS PRODUCT IS TAPED AND REELED IN ACCORDANCE WITH EIA-481 (ELECTRONICS INDUSTRIES ASSOCIATION).



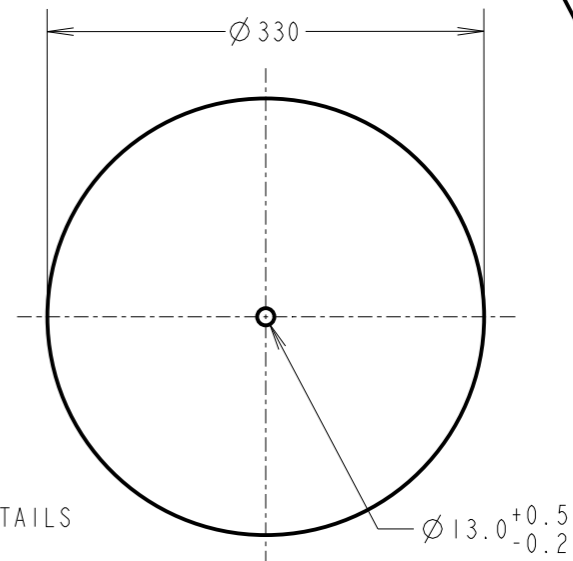
SECTION Y-Y



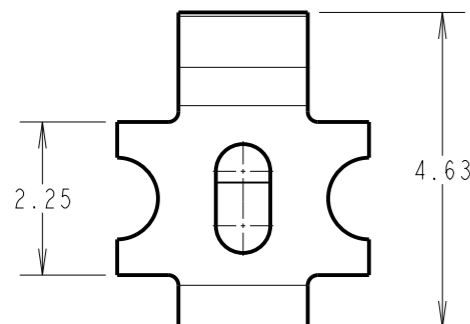
FINISHED REELING DIRECTION



REEL DETAILS



COMPONENT DETAILS



RTP	4	14.01.22	31314
NAME	ISS.	DATE	CN/CO
APPROVED:		R.PORTLOCK	
CHECKED:		M.RUDKIN	
DRAWN:		R.PORTLOCK	
CUSTOMER REF.:			
ASSEMBLY DRG:			

**HARWIN**  
 www.harwin.com  
 technical@harwin.com

THIS DRAWING AND ANY INFORMATION OR DESCRIPTIVE MATTER SET OUT HEREON ARE CONFIDENTIAL AND COPYRIGHT PROPERTY OF THE HARWIN GROUP AND MUST NOT BE DISCLOSED, LOANED, COPIED OR USED FOR MANUFACTURING, TENDERING OR FOR ANY OTHER PURPOSE WITHOUT THEIR WRITTEN PERMISSION.

TOLERANCES  
 X. =  $\pm 1$ mm  
 X.X =  $\pm 0.50$ mm  
 X.XX =  $\pm 0.20$ mm  
 X.XXX =  $\pm 0.01$ mm  
 ANGLES =  $\pm 5^\circ$   
 UNLESS STATED

MATERIAL: SEE SHEET 3  
 FINISH: SEE SHEET 3  
 S/AREA: mm<sup>2</sup>

TITLE: MULTI-DIRECTIONAL SPRING CONTACT IN TAPE AND REEL

DRAWING NUMBER: S1971-46R  
 SHT 2 OF 3

# Customer Information Sheet

DRAWING No.: S1971-46R

IF IN DOUBT - ASK

©

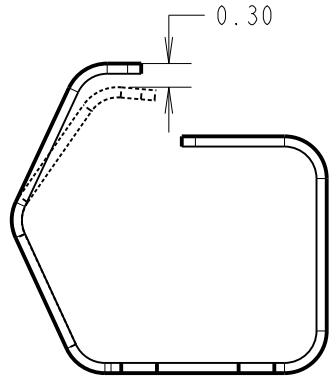
NOT TO SCALE

THIRD ANGLE PROJECTION

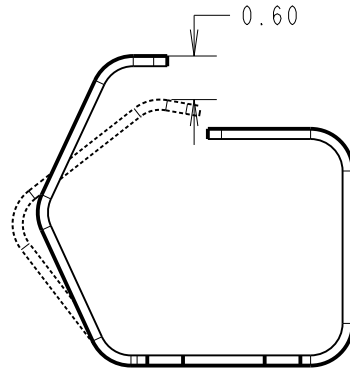
ALL DIMENSIONS IN mm

## S1971-46R DEFLECTION FROM ABOVE

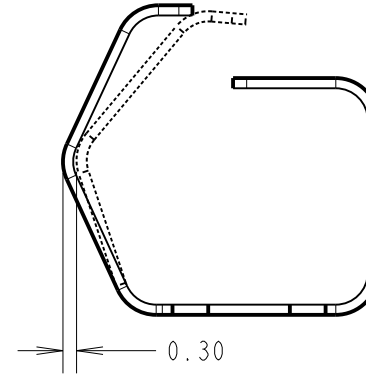
## S1971-46R DEFLECTION FROM FRONT



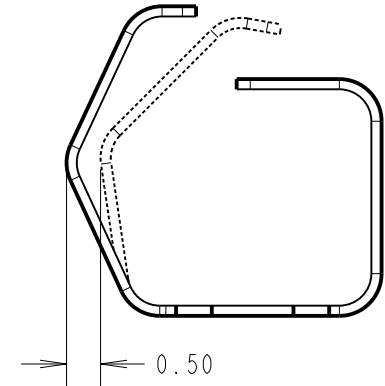
RECOMMENDED WORKING HEIGHT  
DEFLECTION = 0.30mm,  
MINIMUM FORCE OF 1.2N



RECOMMENDED MINIMUM HEIGHT  
DEFLECTION = 0.60mm



RECOMMENDED WORKING LENGTH  
DEFLECTION = 0.30mm



RECOMMENDED MINIMUM LENGTH  
DEFLECTION = 0.50mm

COMPONENT SPECIFICATION:  
 MATERIAL = CUPRO NICKEL  
 FINISH = 3µm 100% TIN OVER 2µm NICKEL  
 ELECTRICAL:  
 CURRENT RATING = 14A  
 CONTACT RESISTANCE = 2mΩ MAX.  
 MECHANICAL:  
 DURABILITY = 5,000 CYCLES  
 OPERATING TEMPERATURE: -55°C to +125°C

RTP	3	14.01.22	31314
NAME	ISS.	DATE	CN/CO
APPROVED: R.PORTLOCK			
CHECKED: M.RUDKIN			
DRAWN: R.PORTLOCK			
CUSTOMER REF.:			
ASSEMBLY DRG:			

# HARWIN

www.harwin.com  
technical@harwin.com

THIS DRAWING AND ANY INFORMATION OR DESCRIPTIVE MATTER SET OUT HEREON ARE CONFIDENTIAL AND COPYRIGHT PROPERTY OF THE HARWIN GROUP AND MUST NOT BE DISCLOSED, LOANED, COPIED OR USED FOR MANUFACTURING, TENDERING OR FOR ANY OTHER PURPOSE WITHOUT THEIR WRITTEN PERMISSION.

TOLERANCES  
 X. = ±1mm  
 X.X = ±0.50mm  
 X.XX = ±0.20mm  
 X.XXX = ±0.01mm  
 ANGLES = ±5°  
 UNLESS STATED

MATERIAL:  
 SEE ABOVE  
 FINISH: SEE ABOVE  
 S/AREA: mm<sup>2</sup>

TITLE:  
 MULTI-DIRECTIONAL SPRING CONTACT  
 IN TAPE AND REEL  
 DRAWING NUMBER:  
**S1971-46R**  
 SHT 3 OF 3