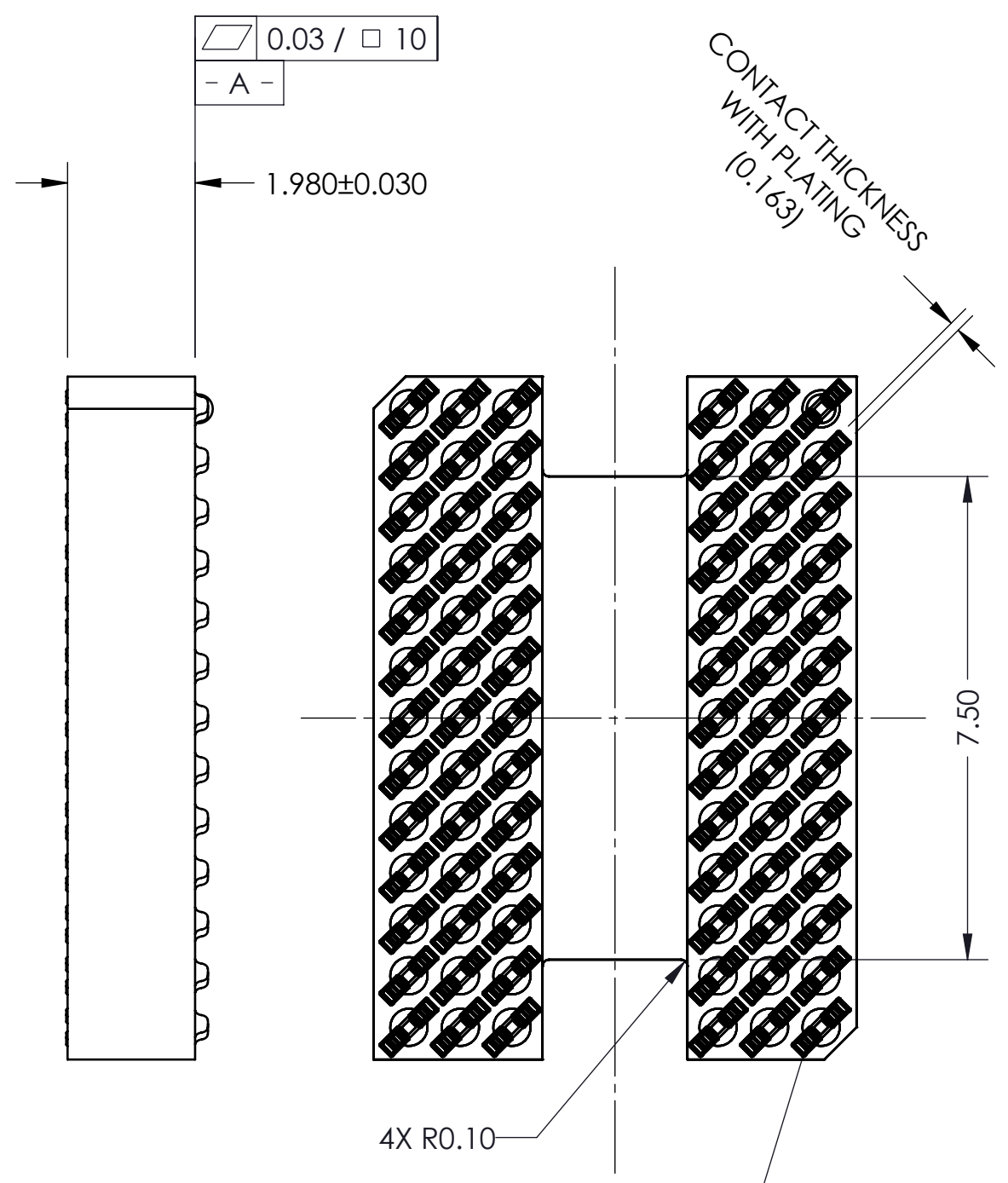
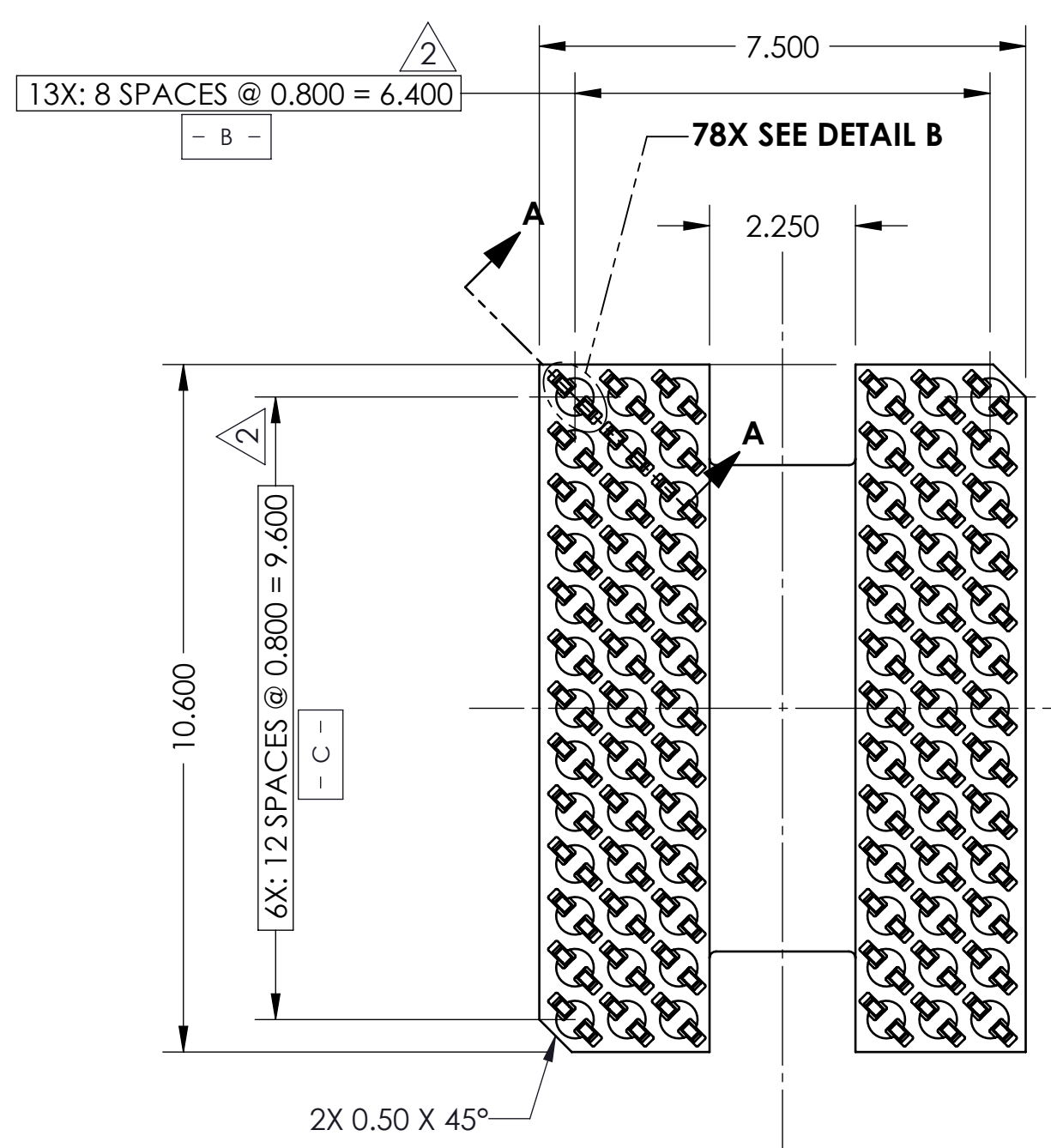
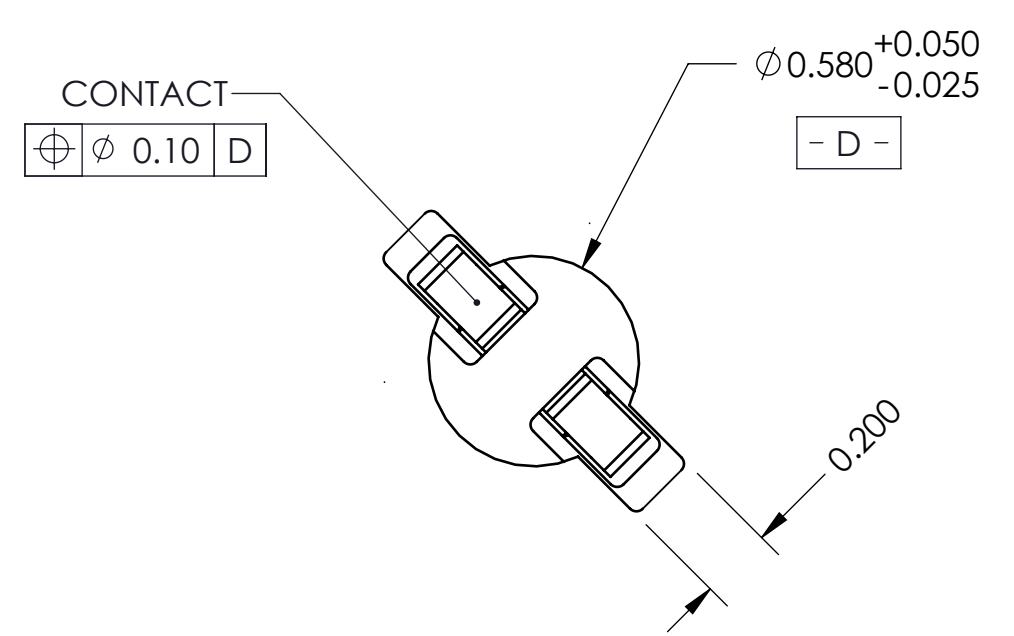
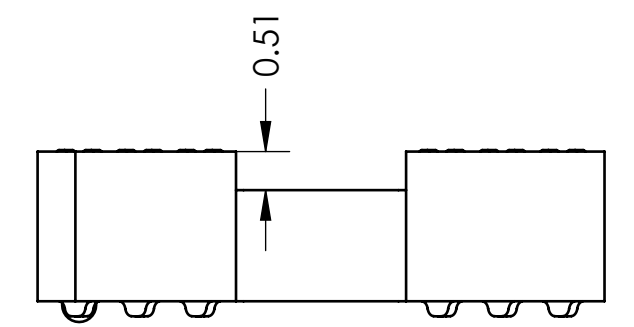


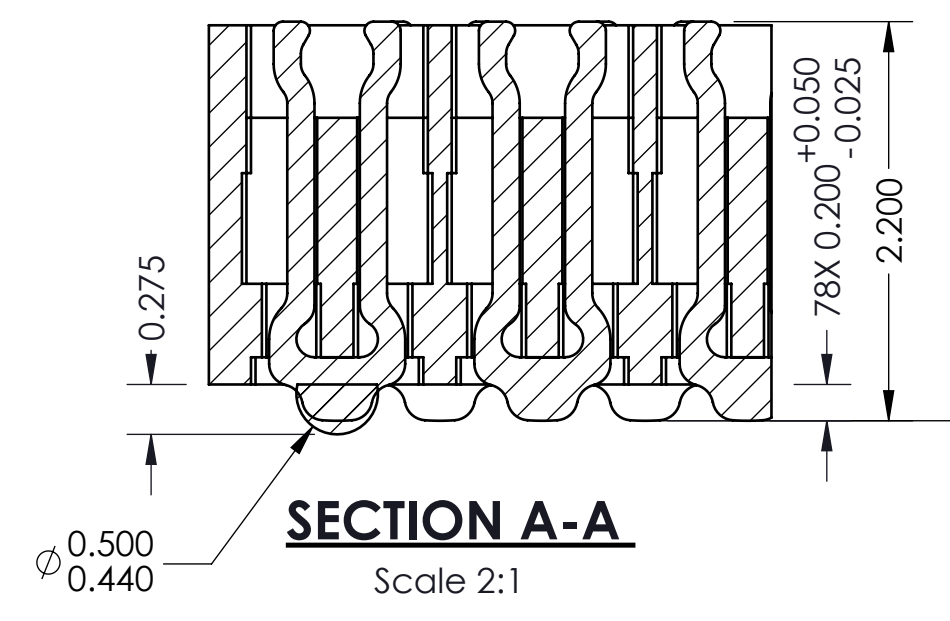
REV	ECO	BY	DESCRIPTION	APV	DATE
A	5408	DJP	Initial Design	AJN	4/9/20



- Notes:
- Footprint part number is 104311-0233
  - Locates center of contact slots.
  - Press size: 7.5 x 10.6
  - Datum B and C determined by  $\varnothing 0.580$  opening in corner slots.
  - Unless otherwise noted, all features located  $\oplus 0.10$  A B C



PARTS LIST	
Part Number	Description
107022-0048	SCKT, 78GRY7.5X10.6-0.80, EUT
105528-0073	CS, 90GRY9X13-0.80
103864-0119	PRESS, DEV INS, 7.5X10.6 (SOLD SEP.)
107030-0038	STEN,FLEX, 78GRY7.5X10.6-0.80 (SOLD SEP.)



DETAIL B 78X  
 SCALE 4:1

UNLESS OTHERWISE SPECIFIED - DIMENSIONS ARE IN MILLIMETERS - DIMS APPLY AFTER PLATING - TOLERANCES UNLESS OTHERWISE NOTED:

DECIMALS  
 X.X ±0.25  
 X.XX ±0.10  
 X.XXX ±0.050

ANGLES ±1°

LEGEND:  
 X NOTE CALLOUT  
 A REVISION CHANGE  
 X ITEM NUMBER

THE INFORMATION CONTAINED IN THIS DRAWING IS THE SOLE PROPERTY OF IRONWOOD ELECTRONICS, INC. ANY REPRODUCTION IN PART OR WHOLE WITHOUT THE WRITTEN PERMISSION OF IRONWOOD ELECTRONICS, INC. IS PROHIBITED.

CAD GENERATED DRAWING DO NOT MANUALLY UPDATE

IRONWOOD ELECTRONICS, INC  
 EAGANDALE CT  
 EAGAN, MN 55121. 952-229-8200

DRAWING APPROVALS

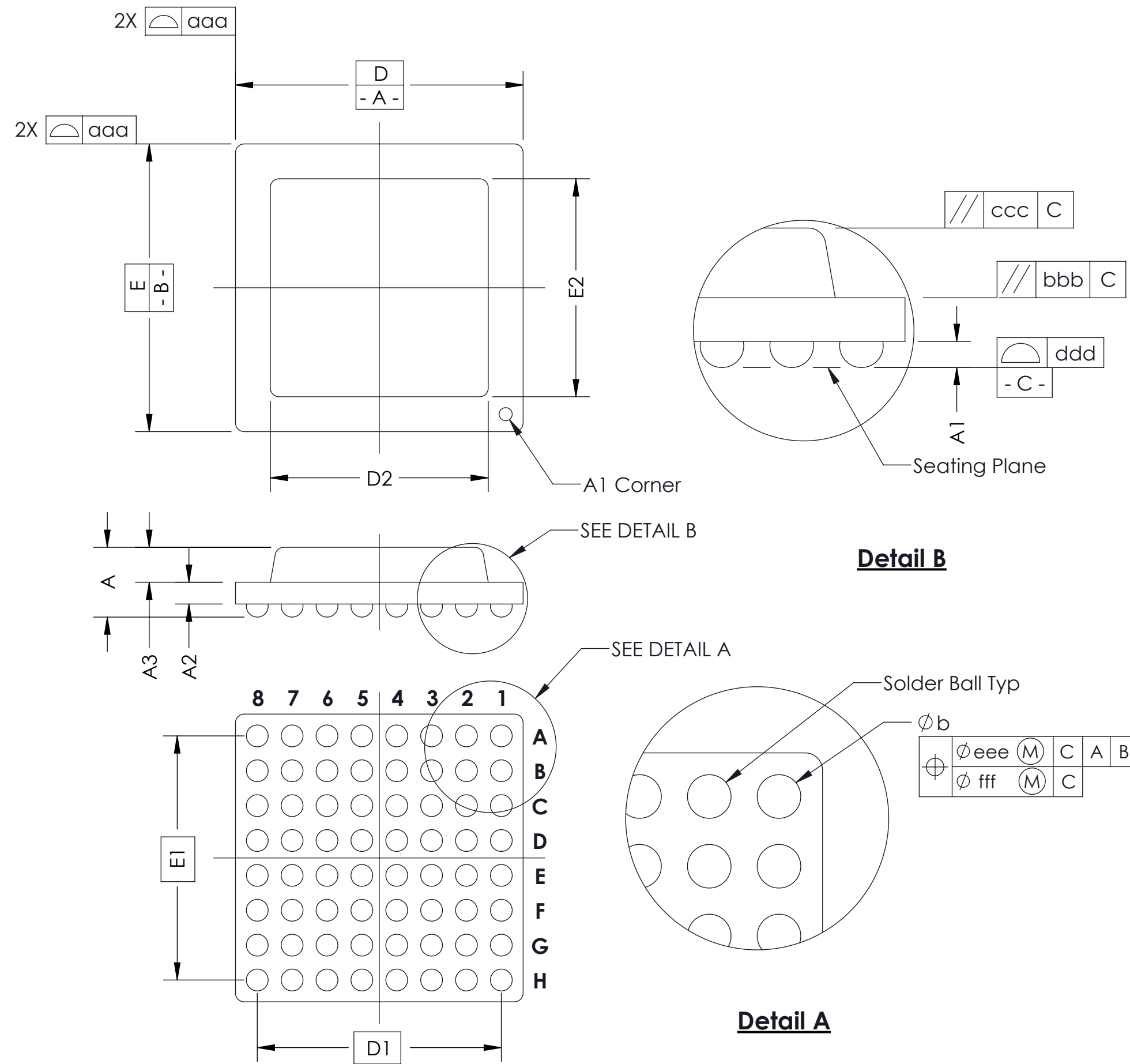
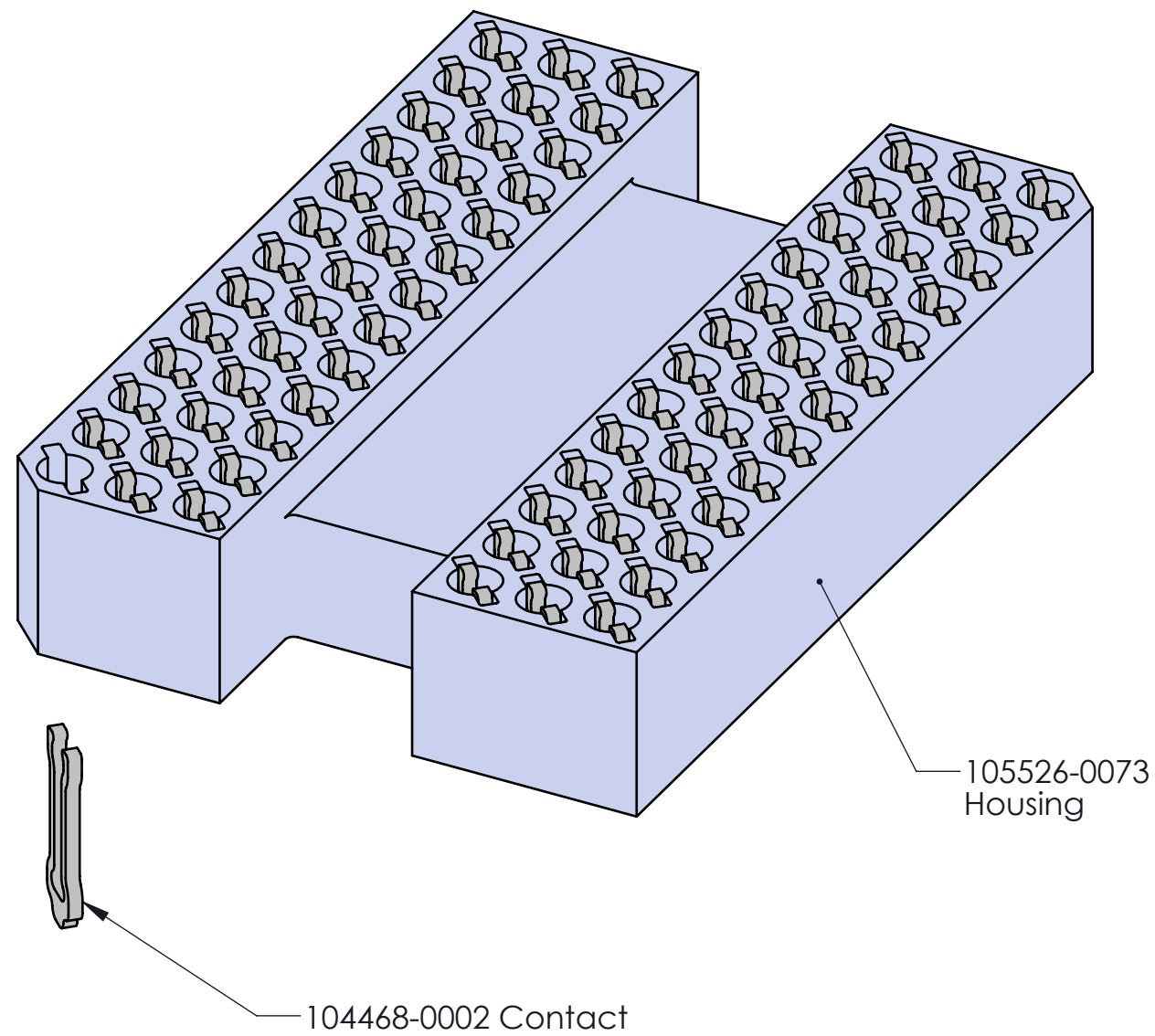
NAME	DATE
DJP	4/9/20
AJN	4/9/20

THIRD ANGLE PROJECTION

SCALE: C  
 CAD FORMAT: SOLIDWORKS  
 DRAWING NO.: 107022-0048  
 REV.: A  
 MATERIAL: SEE BOM  
 SHEET: 1 of 2

SOCKET FOR DEVICES THAT ARE WITHIN THESE SPECIFICATIONS					
Lead Count	<b>N</b>	78	Package Size	<b>D</b>	7.50
Columns	<b>ND</b>	6	Ball Spacing	<b>E1</b>	10.60
Rows	<b>NE</b>	13	Encapsulant/Top Size	<b>D1</b>	6.40
Pitch	<b>e</b>	0.80	Encapsulant/Bottom Size	<b>E2</b>	n/a
Ball Size	<b>b</b>	0.45±0.05	Pattern Style		Irregular*
Total Thickness	<b>A</b>	N/A	Perimeter Rows		n/a
Ball Height	<b>A1</b>	0.275 Min	Center Array		n/a
Substrate Thickness	<b>A2</b>	N/A			
Top Thickness	<b>A3</b>	N/A			
Form Tolerances					
Edge	<b>aaa</b>	0.20	Bottom	<b>ddd</b>	0.15
Substrate	<b>bbb</b>	0.20	Position	<b>eee</b>	0.20
Top	<b>ccc</b>	0.20	Position	<b>fff</b>	0.08

All dimensions are in millimeters.  
\*See footprint specification for pattern details.



**Generic Representation with Full Grid Array**

<small>THE INFORMATION CONTAINED IN THIS DRAWING IS THE SOLE PROPERTY OF IRONWOOD ELECTRONICS, INC. ANY REPRODUCTION IN PART OR WHOLE WITHOUT THE WRITTEN PERMISSION OF IRONWOOD ELECTRONICS, INC. IS PROHIBITED.</small>			
<small>UNLESS OTHERWISE SPECIFIED - DIMENSIONS ARE IN MILLIMETERS - DIMS APPLY AFTER PLATING TOLERANCES UNLESS OTHERWISE NOTED: DECIMALS ANGLES X.X ±0.25 ±1° X.XX ±0.10 X.XXX ±0.050</small>		<b>IRONWOOD ELECTRONICS, INC</b> 1335 EAGANDALE CT EAGAN, MN 55121. 952-229-2800	
<b>SCKT, 78GRY7.5X10.6-0.80, DS</b>			
<small>LEGEND:</small> (X) NOTE CALLOUT (A) REVISION CHANGE (X) ITEM NUMBER	<small>SIZE</small> C <small>CAD FORMAT</small> SOLIDWORKS <small>SCALE</small>	<small>DRAWING NO.</small> <b>107022-0048</b> <small>REVISION</small> <b>A</b> <small>MATERIAL</small> See Page 1	<small>REV.</small> <b>A</b> <small>SHEET</small> 2 of 2