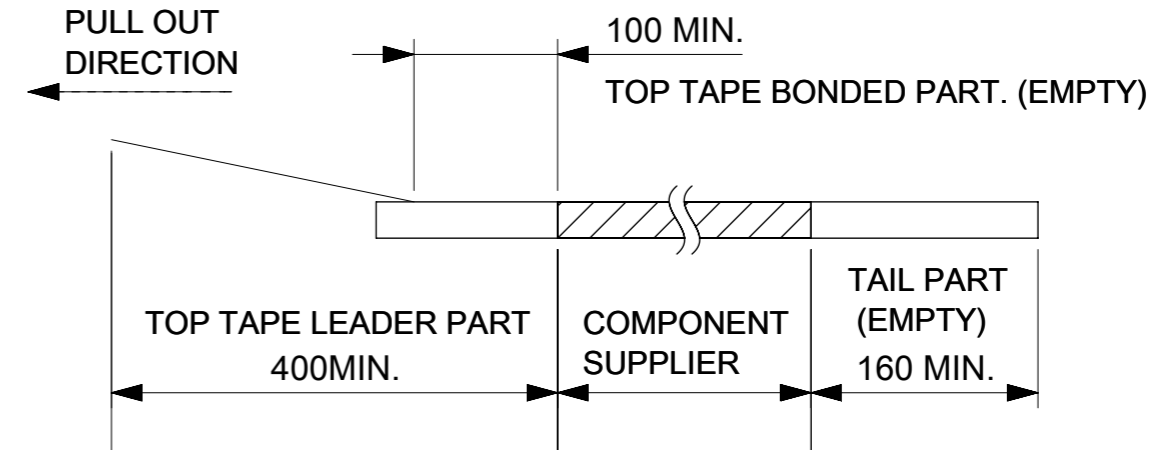
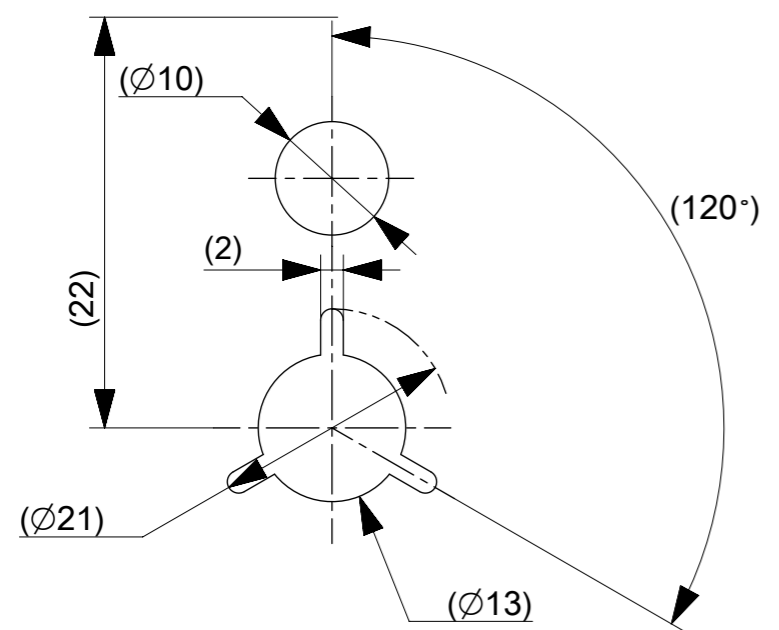


NOTES

1. RE DETAILED DIMENSION, SEE PRODUCT DRAWING.
2. NUMBER OF CONNECTORS : 20000PCS/REEL
3. LEAD TAPE LENGTH.

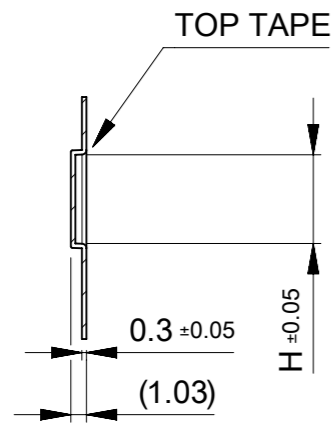


4. PEELING OFF FORCE OF THE TOP TAPE IS DEFINED BY IEC60286-3.
5. MATERIAL
CARRIER TAPE : POLYSTYRENE OR PET
TOP TAPE : PET , OTHER
REEL : POLYSTYRENE (PS) < RECYCLE MATERIAL CONTAINED >
6. ELV AND RoHS COMPLIANT
7. CONFORM TO 2033899200-SPK_PS200 FOR PACKAGING SPECIFICATION.
8. CONFORM TO 2033899200-SPK_PS201 FOR PACKAGING SPECIFICATION.

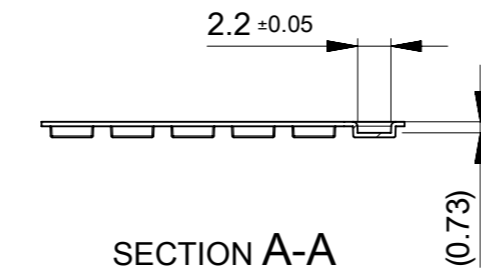
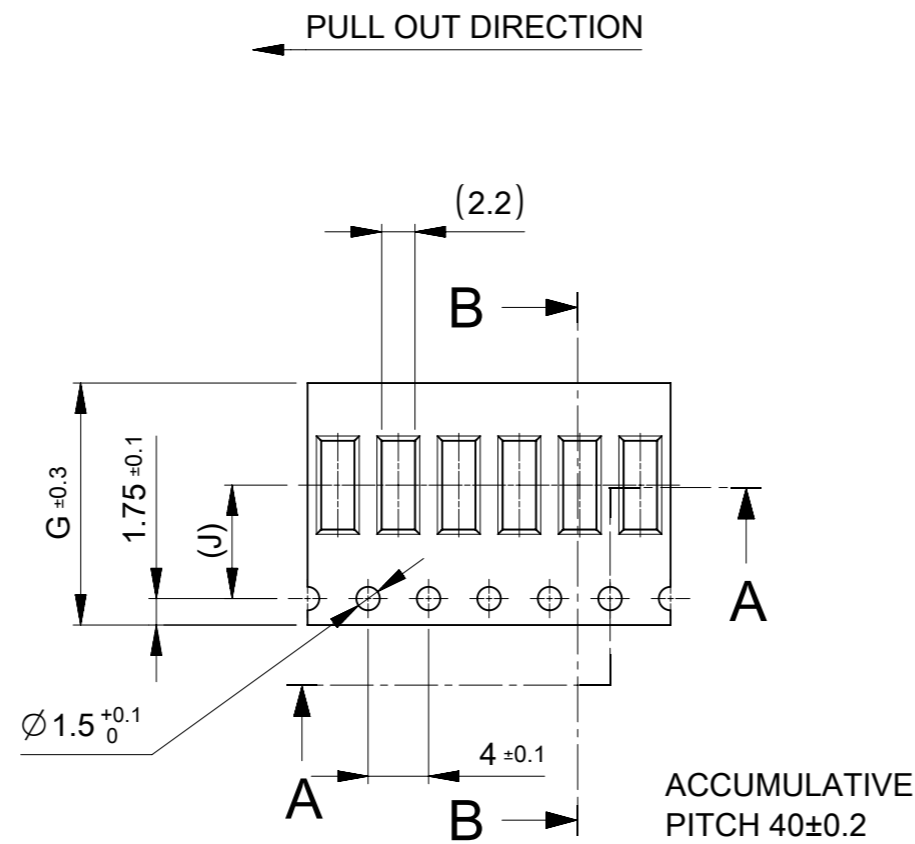


DETAIL "D"

THIS DRAWING CONTAINS INFORMATION THAT IS PROPRIETARY TO MOLEX ELECTRONIC TECHNOLOGIES, LLC AND SHOULD NOT BE USED WITHOUT WRITTEN PERMISSION												
DIMENSION UNITS		SCALE		CURRENT REV DESC:				molex				
mm		1:1										
GENERAL TOLERANCES (UNLESS SPECIFIED)				EC NO: 725424 DRWN: AISHII 2022/10/20 CHK'D: YKOBAYASHI02 2022/10/20 APPR: KSASAKI 2022/10/21 INITIAL REVISION: DRWN: DGONDO 2020/06/25 APPR: YKOBAYASHI02 2020/07/07				0.175BB H=0.6 QUADROW REC EMBS PACKAGE				
ANGULAR TOL ± 3.0 °								PRODUCT CUSTOMER DRAWING				
4 PLACES ± 0.03		3 PLACES ± 0.03						DOCUMENT NUMBER		DOC TYPE	DOC PART	REVISION
2 PLACES ± 0.05		1 PLACE ± 0.1						2033890000-SD		PSD	000	E
0 PLACES ± 0.2		DRAFT WHERE APPLICABLE MUST REMAIN WITHIN DIMENSIONS						THIRD ANGLE PROJECTION	DRAWING	SERIES	MATERIAL NUMBER	CUSTOMER
				A3-SIZE	203389	SEE CHART	GENERAL	1 OF 2				



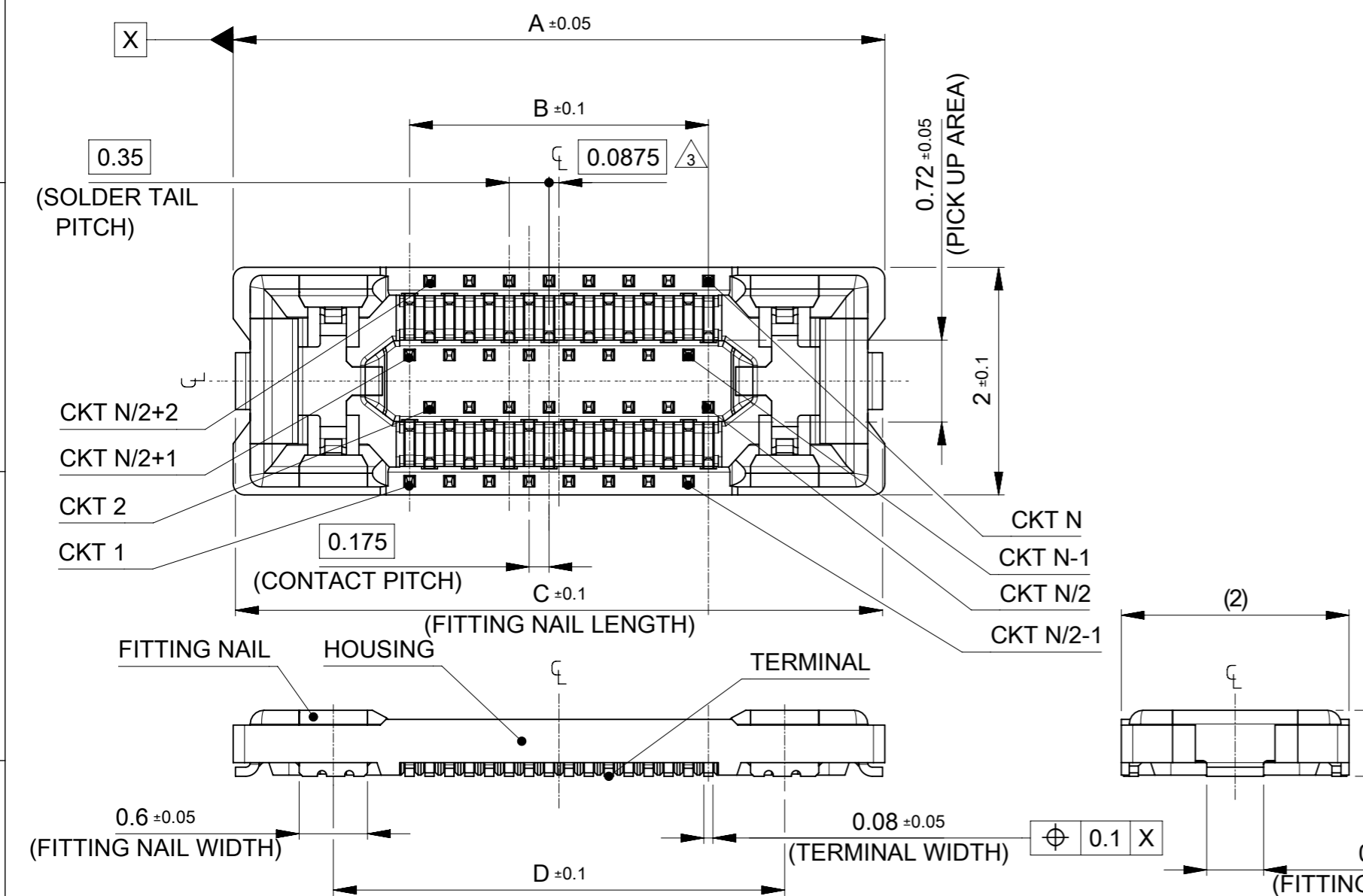
SECTION B-B



SECTION A-A

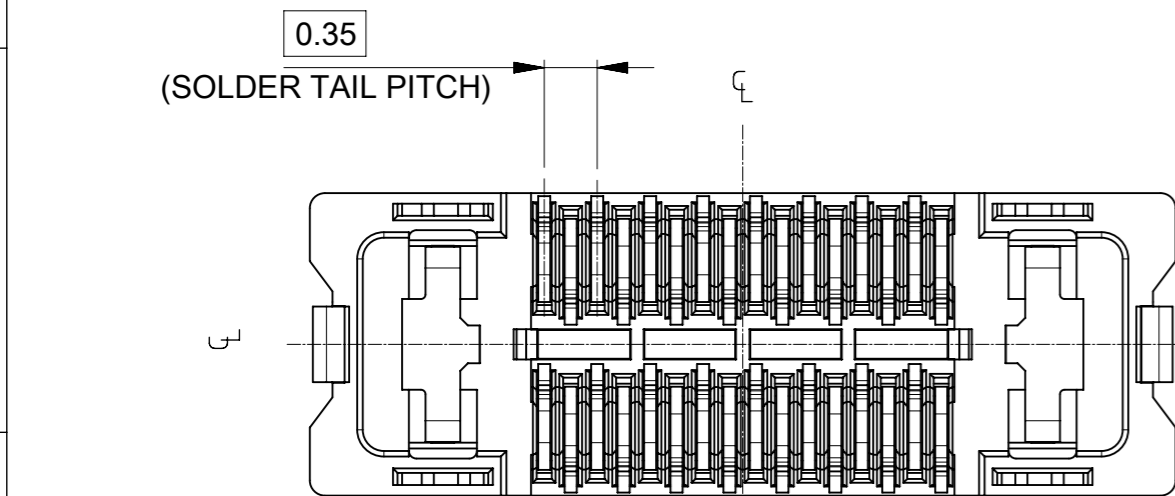
7.5	6.215	16	21.4	17.4	2033890363	2033890361	36
7.5	5.865	16	21.4	17.4	2033890323	2033890321	32
J	H	G	F	E	ORDER NO.	ORDER NO.	CIRCUIT
					PACKAGING SPEC: \triangle_8	PACKAGING SPEC: \triangle_7	
CONNECTOR SERIES No. 2033890***							

THIS DRAWING CONTAINS INFORMATION THAT IS PROPRIETARY TO MOLEX ELECTRONIC TECHNOLOGIES, LLC AND SHOULD NOT BE USED WITHOUT WRITTEN PERMISSION							
DIMENSION UNITS mm		SCALE 2:1		CURRENT REV DESC:			
GENERAL TOLERANCES (UNLESS SPECIFIED)				molex			
ANGULAR TOL ± 3.0 °							
4 PLACES ± 0.03		3 PLACES ± 0.03		EC NO: 725424			
2 PLACES ± 0.05		1 PLACE ± 0.1		DRWN: AISHII 2022/10/20			
0 PLACES ± 0.2		DRAFT WHERE APPLICABLE MUST REMAIN WITHIN DIMENSIONS		CHK'D: YKOBAYASHI02 2022/10/20			
THIRD ANGLE PROJECTION		DRAWING		SERIES		DOCUMENT NUMBER	
A3-SIZE		203389		2020/06/25		2020/07/07	
MATERIAL NUMBER		CUSTOMER		SHEET NUMBER		REVISION	
SEE CHART		GENERAL		2 OF 2		E	



NOTES

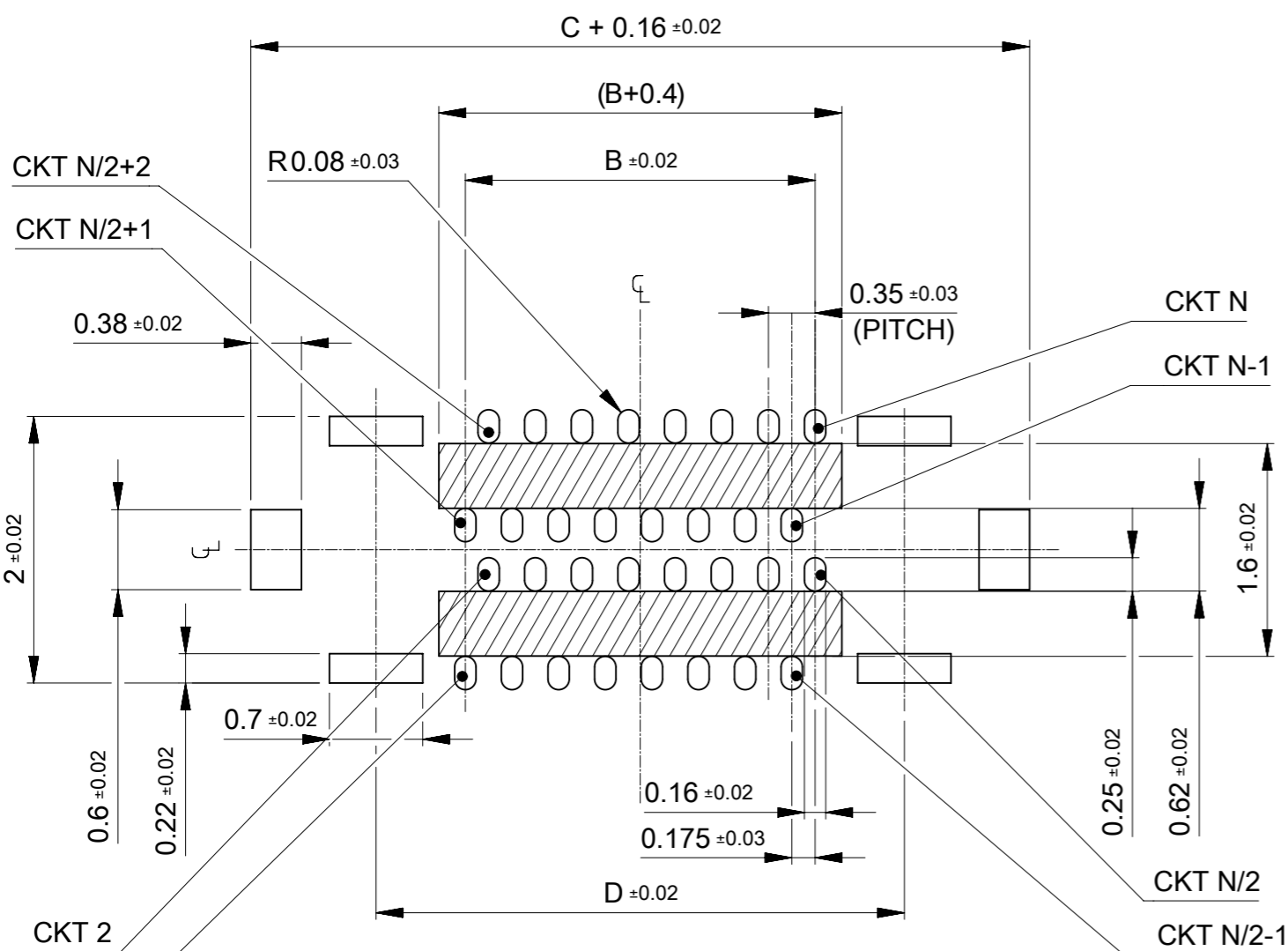
- MATERIAL
 HOUSING : LIQUID CRYSTAL POLYMER UL94V-0(COLOR : BLACK)
 TERMINAL : COPPER ALLOY
 FITTING NAIL : COPPER ALLOY
 - PLATING
 TERMINAL
 CONTACT AREA : GOLD 0.1 μm MIN.
 TAIL AREA : GOLD 0.05 μm MIN.
 UNDER PLATING : NICKEL 1.0 μm MIN.
 *DIVIDE INTO PARTS THE GOLD PLATING OF CONTACT AND THE TAIL PART BY THE NICKEL PLATING.
 *EITHER GOLD OR NICKEL PLATING IS ACCEPTABLE IN THE AREA WHICH IS NOT SPECIFIED AS CONTACT , TAIL OR NICKEL BARRIER.
 FITTING NAIL
 CONTACT AREA : GOLD 0.1 μm MIN.
 TAIL AREA : GOLD 0.05 μm MIN.
 UNDER PLATING : NICKEL 1.0 μm MIN.
 *DIVIDE INTO PARTS THE GOLD PLATING OF CONTACT AND THE TAIL PART BY THE NICKEL PLATING.
 *EITHER GOLD OR NICKEL PLATING IS ACCEPTABLE IN THE AREA WHICH IS NOT SPECIFIED AS CONTACT , TAIL OR NICKEL BARRIER.
- △3 APPLY FOR (CIRCUIT/4)=EVEN
 4. MATE WITH : 2033900**1, 2033900**3
 5. TAIL AND FITTING NAIL COPLANARITY TO BE 0.08mm MAXIMUM.
 △6 CONFORM TO 2033899200-SPK_PS200 FOR PACKAGING SPECIFICATION.
 △7 CONFORM TO 2033899200-SPK_PS201 FOR PACKAGING SPECIFICATION.



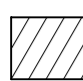
4.315	6.035	2.975	6.075	2033890363	2033890361	36
3.965	5.685	2.625	5.725	2033890323	2033890321	32
D	C	B	A	EMBOSSED TAPE PACKAGE	EMBOSSED TAPE PACKAGE	CIRCUIT
				ORDER No.	ORDER No.	
				PACKAGING SPEC: △7	PACKAGING SPEC: △6	

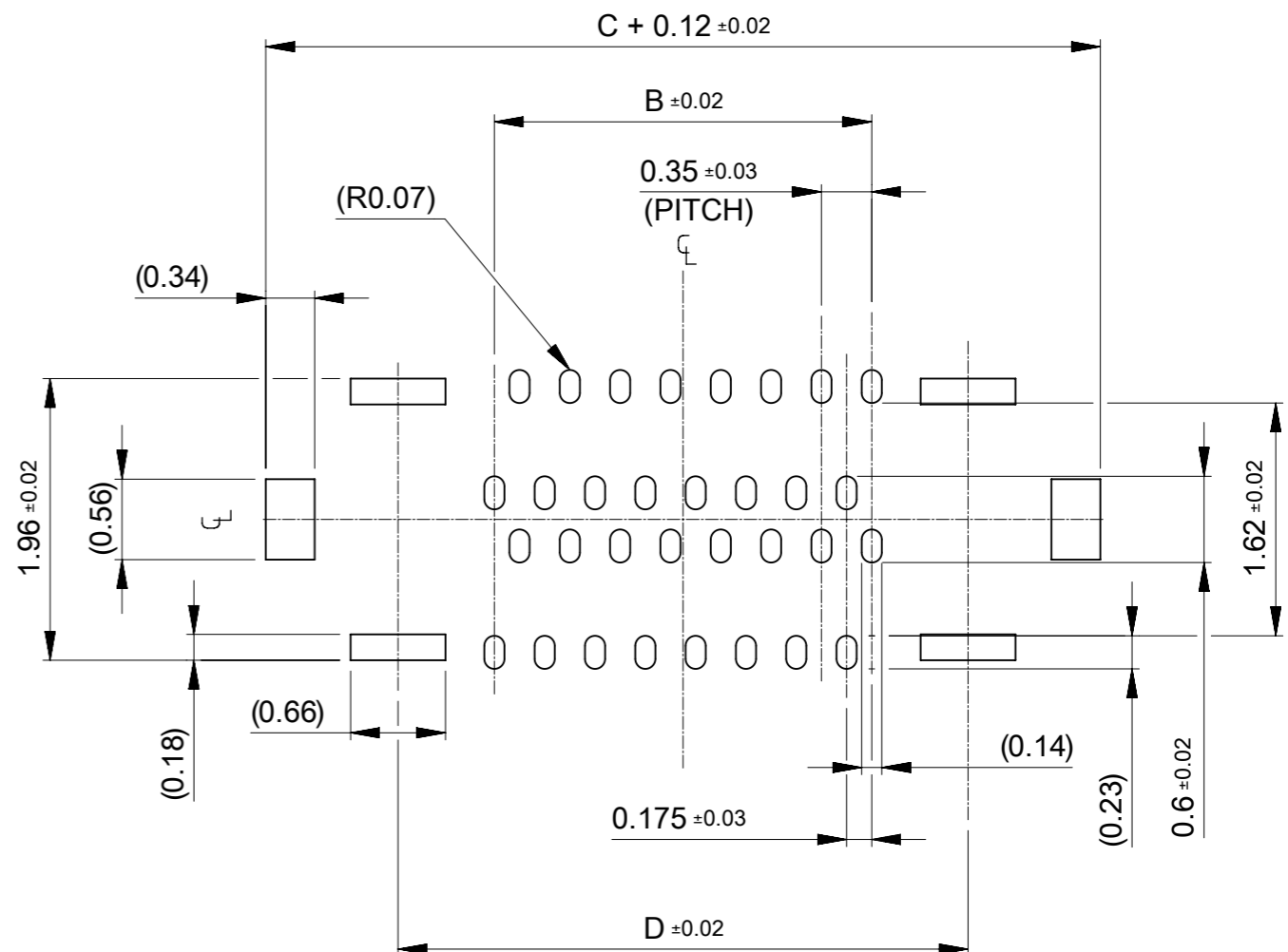
CONNECTOR SERIES No. : 2033891**1

THIS DRAWING CONTAINS INFORMATION THAT IS PROPRIETARY TO MOLEX ELECTRONIC TECHNOLOGIES, LLC AND SHOULD NOT BE USED WITHOUT WRITTEN PERMISSION		CURRENT REV DESC:		molex	
DIMENSION UNITS	SCALE				
mm	20:1			0.175 BB H=0.6 QUAD ROW REC ASSY	
GENERAL TOLERANCES (UNLESS SPECIFIED)				PRODUCT CUSTOMER DRAWING	
ANGULAR TOL	± 3.0 °			DOCUMENT NUMBER	
4 PLACES	± 0.03	EC NO: 725424		2033891000-SD	
3 PLACES	± 0.03	DRWN: AISHII		DOC TYPE	
2 PLACES	± 0.05	CHK'D: YKOBAYASHI02		PSD	
1 PLACE	± 0.1	APPR: KSASAKI		DOC PART	
0 PLACES	± 0.2	INITIAL REVISION:		000	
DRAFT WHERE APPLICABLE MUST REMAIN WITHIN DIMENSIONS		DRWN: DGONDO		E	
THIRD ANGLE PROJECTION		APPR: YKOBAYASHI02		REVISION	
DRAWING		SERIES		SHEET NUMBER	
A3-SIZE		203389		1 OF 2	
MATERIAL NUMBER		CUSTOMER			
SEE CHART		GENERAL			



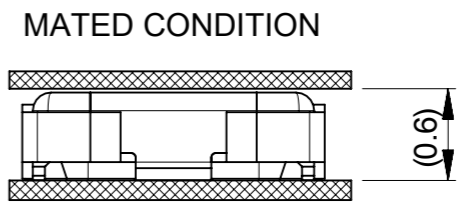
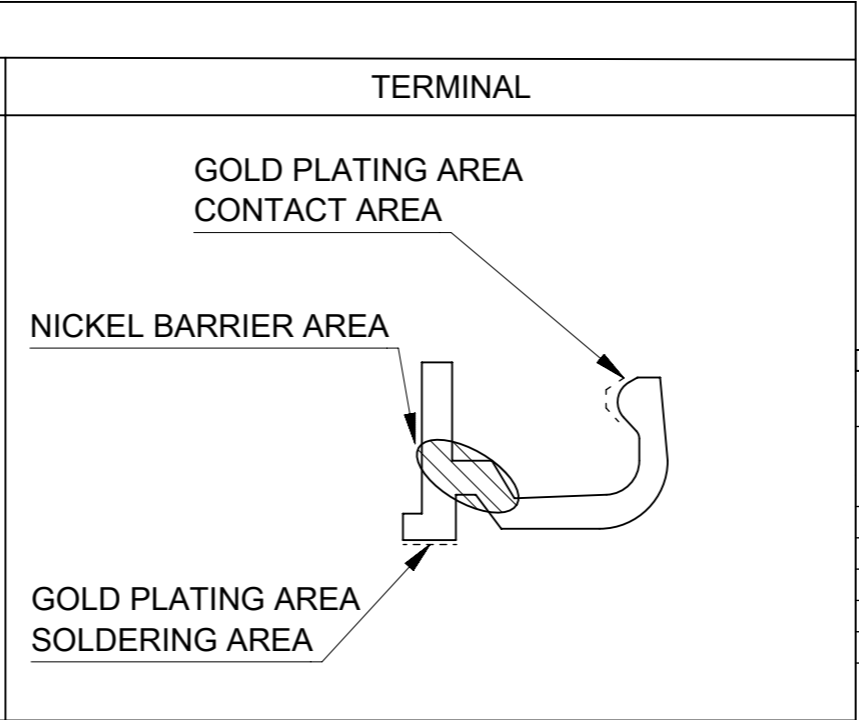
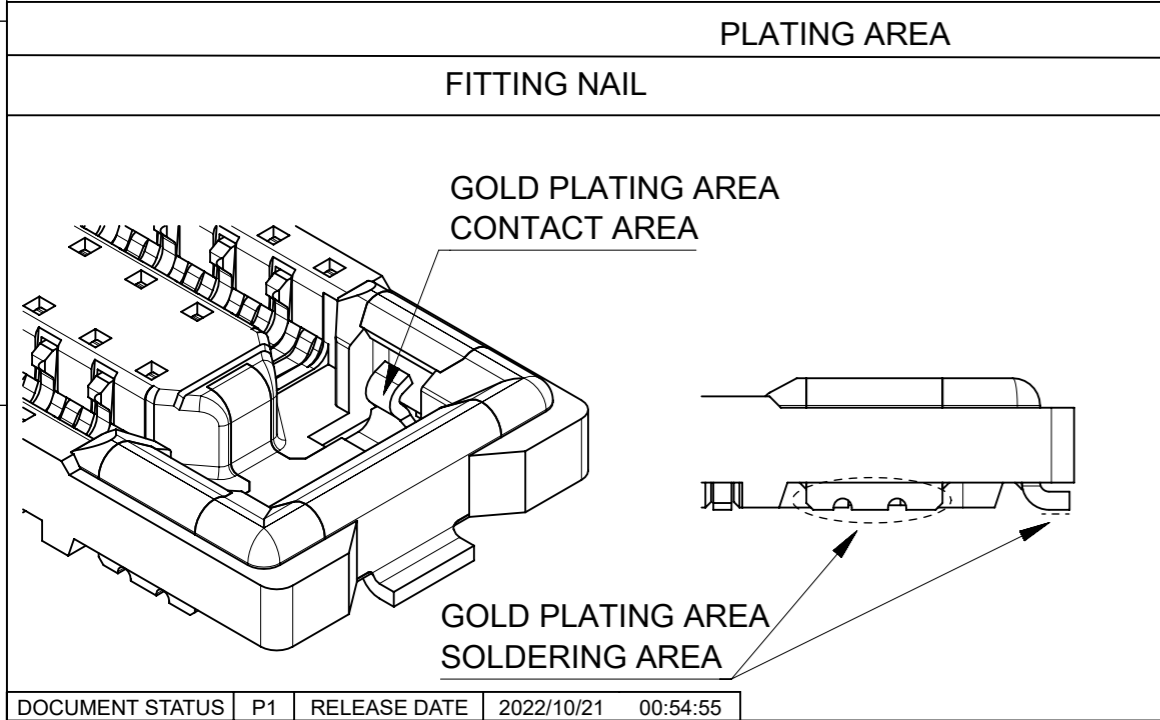
RECOMMENDED P.W. BOARD PATTERN LAYOUT (REFERENCE)
(SM OPENING DIMENSION)

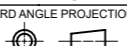
 SOLDERING PROHIBITED AREA
WHEN WIRING IS LOCATED,
THE WIRING MUST BE MASKED BY COVER LAY OR RESIST FILM.



RECOMMENDED METAL MASK LAYOUT (REFERENCE)

RECOMMENDED THICKNESS OF METAL MASK : t=0.08mm
RECOMMENDED OPEN APERTURE RATIO OF METAL MASK : 80%



THIS DRAWING CONTAINS INFORMATION THAT IS PROPRIETARY TO MOLEX ELECTRONIC TECHNOLOGIES, LLC AND SHOULD NOT BE USED WITHOUT WRITTEN PERMISSION									
DIMENSION UNITS		SCALE		CURRENT REV DESC:					
mm		20:1							
GENERAL TOLERANCES (UNLESS SPECIFIED)									
ANGULAR TOL ± 3.0°									
4 PLACES		± 0.03		EC NO: 725424					
3 PLACES		± 0.03		DRWN: AISHII		2022/10/20			
2 PLACES		± 0.05		CHK'D: YKOBAYASHI02		2022/10/20			
1 PLACE		± 0.1		APPR: KSASAKI		2022/10/21			
0 PLACES		± 0.2		INITIAL REVISION:					
DRAFT WHERE APPLICABLE MUST REMAIN WITHIN DIMENSIONS		THIRD ANGLE PROJECTION		DRAWING		SERIES		MATERIAL NUMBER	
				A3-SIZE		203389		SEE CHART	
DOCUMENT STATUS				P1		RELEASE DATE		2022/10/21 00:54:55	
DOCUMENT NUMBER				DOC TYPE		DOC PART		REVISION	
2033891000-SD				PSD		000		E	
CUSTOMER				GENERAL		SHEET NUMBER		2 OF 2	