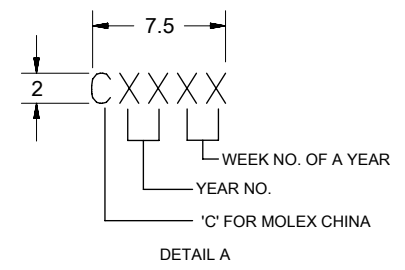
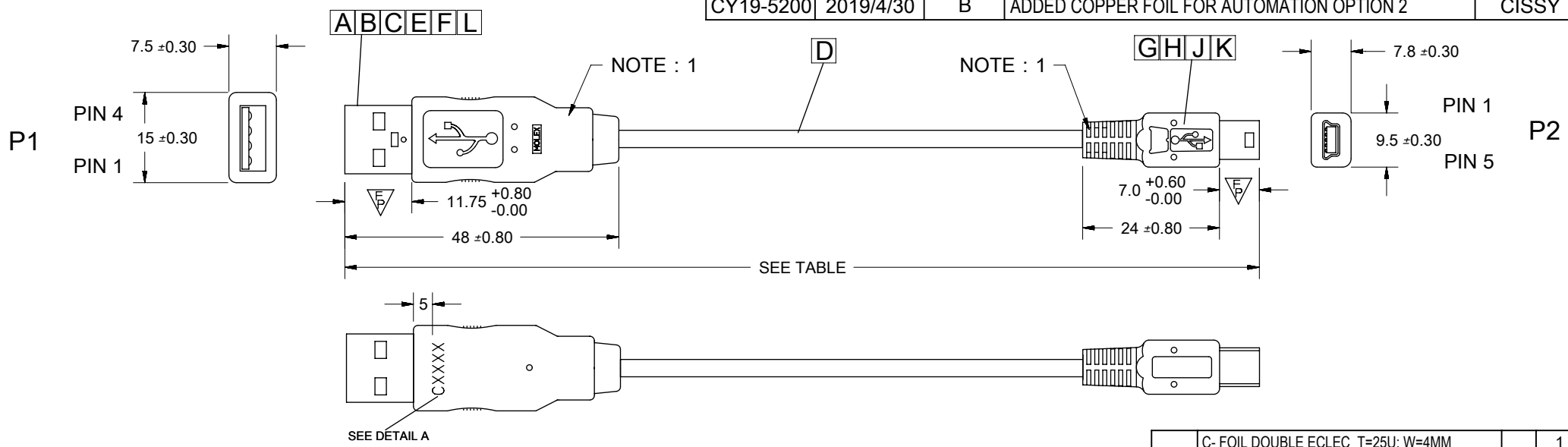


REVISIONS				
EC NO	DATE	REV	DESCRIPTION	CHANGER
NA	2006/01/09	A	INITIAL RELEASE	CISSY
CY19-5200	2019/4/30	B	ADDED COPPER FOIL FOR AUTOMATION OPTION 2	CISSY



SHELL	SHELL	SHIELD DING	BRAID WIRE
4	5	GROUND	BLACK
3	3	+DATA	GREEN
2	2	-DATA	WHITE
1	1	VCC	RED
P1	P2	SIGNAL NAME	WIRE COLOR

WIRE DIAGRAM

ITEM	DESCRIPTION	L	QTY'
L	C- FOIL DOUBLE ECLEC T=25U; W=4MM		1
	PRE-CUT C.FOIL 21X5MM		1
K	C- FOIL DOUBLE ECLEC T=25U; W=4MM		1
	PRE-CUT C.FOIL 21x4MM HF		1
J	USB series Mini-B Plug cover shield		1
H	USB series Mini-B plug shield case		1
G	Mini-B Plug housing & terminal sub-assy.		1
F	TERMINAL (AWG24)		2
E	TERMINAL (AWG28)		2
D	USB1.1 #28*1P#24*2C CABLE		SEE TABLE
C	"A" REAR SHELL 30-W029-M		1
B	"A" FRONT SHELL 30-W027-M		1
A	A CRIMP HSG WHT10-T053-2		1

SYMBOLS DIMENSION UNITS: mm SCALE: 1:1 CURRENT REV DESC: GENERAL TOLERANCES (UNLESS SPECIFIED) ANGULAR TOL ± 0.5° 4 PLACES ± 3 PLACES ± 2 PLACES ± 0.25 1 PLACE ± 0.5 0 PLACES ± 1.0 DRAFT WHERE APPLICABLE MUST REMAIN WITHIN DIMENSIONS	EC NO: 623590 DRWN: ZZXIAN 2019/04/29 CHK'D: CWANG49 2019/09/05 APPR: FNIE 2019/09/05		 USB A TO MINI B VER1.1	
	INITIAL REVISION: DRWN: JFZHENG 2006/01/09 APPR: DQLUO 2006/01/16			
	DOCUMENT NUMBER: SD-887328510 DOC TYPE: PSD DOC PART: 001 REVISION: B		MATERIAL NUMBER: 88732-8X1X CUSTOMER: GENERAL MARKET SHEET NUMBER: 1 OF 2	
	THIRD ANGLE PROJECTION 		DRAWING: A4-SIZE	SERIES: 88732

DOCUMENT STATUS	P1	RELEASE DATE	2019/09/05	11:05:47
-----------------	----	--------------	------------	----------

NOTE:

1. MOLDED WITH PVC,CABLE P/N & COLOR AS TABLE.

COOL GREY	887800079	887808421	COOL GREY
BLACK	887800019	887808239	BLACK
FROST WHITE	887800043	172007714	WHITE
RESIN COLOR	RESIN P/N	CABLE P/N	CABLE COLOR

2. TICK UL LABEL ON EACH CARON.

3. ELECTRICAL PERFORMANCE :

ALL TEST DUABILITY:0.01 SEC.


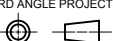
1. DIELECTRONIC STRENGTH:500V DC

2. INSULATION RESISTANCE:100M OHMS

3. CONDUCTIVE RESISTANCE: 3 OHMS

4. ALL COMPOUENT MUST MEET RoHS COMPLIANCE.

88732-8816	1800±30	887328812 PACKING 1 CABLE PER BAG	BLACK
88732-8713	1500±30	USB A - MINI-B 1.5M 1.1VER COOL GREY	GREY
88732-8912	2000±30	USB A - MINI-B 2.0M 1.1VER BLACK	BLACK
88732-8812	1800±30	USB A - MINI-B 1.8M 1.1VER BLACK	BLACK
88732-8712	1500±30	USB A - MINI-B 1.5M 1.1VER BLACK	BLACK
88732-8612	1000±30	USB A - MINI-B 1.0M 1.1VER BLACK	BLACK
88732-8512	800±30	USB A - MINI-B 0.8M 1.1VER BLACK	BLACK
88732-8412	1200±30	USB A - MINI-B 1.2M 1.1VER BLACK	BLACK
88732-8910	2000±30	USB A TO MINI-B 2.0M V1.1	WHITE
88732-8810	1800±30	USB A - MINI-B 1.8M 1.1VER FROST WHITE	WHITE
88732-8710	1500±30	USB A -MINI - B 1.5M 1.1VER FROST WHITE	WHITE
88732-8610	1000±30	USB A - MINI-B 1.0M 1.1VER FROST WHITE	WHITE
88732-8510	800±30	USB A - MINI-B 0.8M 1.1VER FROST WHITE	WHITE
88732-8410	1200±30	USB A - MINI-B 1.2M 1.1VER FROST WHITE	WHITE
MX P/N	CABLE LENGTH	DESCRIPTION	CABLE COLOR

SYMBOLS	THIS DRAWING CONTAINS INFORMATION THAT IS PROPRIETARY TO MOLEX ELECTRONIC TECHNOLOGIES, LLC AND SHOULD NOT BE USED WITHOUT WRITTEN PERMISSION												
	DIMENSION UNITS		SCALE		CURRENT REV DESC:								
	mm		1:1										
	GENERAL TOLERANCES (UNLESS SPECIFIED)				EC NO: 623590				USB A TO MINI B VER1.1				
			MM	INCH	DRWN: ZZXIAN 2019/04/29				PRODUCT CUSTOMER DRAWING				
	4 PLACES ±				CHK'D: CWANG49 2019/09/05				DOCUMENT NUMBER				
	3 PLACES ±												
	2 PLACES ± 0.25				APPR: FNIE 2019/09/05				SD-887328510		PSD 001		REVISION B
1 PLACE ± 0.5													
0 PLACES ± 1.0				INITIAL REVISION:				DOC TYPE DOC PART					
ANGULAR TOL ± 0.5 °				DRWN: DRWN BY XXXX/XX/XX				GENERAL MARKET					
DRAFT WHERE APPLICABLE MUST REMAIN WITHIN DIMENSIONS		THIRD ANGLE PROJECTION		DRAWING		SERIES		MATERIAL NUMBER		CUSTOMER		SHEET NUMBER	
				A4-SIZE		88732				GENERAL MARKET		2 OF 2	

DOCUMENT STATUS	P1	RELEASE DATE	2019/09/05	11:05:47
-----------------	----	--------------	------------	----------

NOTE:

1.MOLDED OVC RESIN,CABLE P/N & COLOR AS TABLE

COOL GREY	887800079	887808421	COOL GREY
BLACK	887800019	887808239	BLACK
FROST WITHE	887800043	887808249	FROST WITHE
RESIN COLOR	RESIN P/N	CABLE P/N	CABLE COLOR

2.STICK UL LABEL ON EACH CARON.

▽ELECTRICAL PERFORMANCE

ALL TEST DUABILITY:0.01 SEC

1. DIELECTRONIC STRENGTH:500V DC
2. INSULATION RESISTANCE:100M OHMS MIN.
3. CONDUCTIVE RESISTANCE: 3 OHMS MAX.
4. ALL COMPOUENT MUST MEET RoHS COMPLIANCE.



88732-8816	1800±30	USB_A TO MINI_B I.I VER	88780-8239	88780-9091	88780-9090
88732-8713	1500±30	USB_A TO MINI_B I.I VER	88780-8421	88780-9091	88780-9090
88732-8912	2000±30	USB_A TO MINI_B I.I VER	88780-8239	88780-9091	88780-9090
88732-8812	1800±30	USB_A TO MINI_B I.I VER	88780-8239	88780-9091	88780-9090
88732-8712	1500±30	USB_A TO MINI_B I.I VER	88780-8239	88780-9091	88780-9090
88732-8612	1000±30	USB_A TO MINI_B I.I VER	88780-8239	88794-1218	88794-1217
88732-8512	800±30	USB_A TO MINI_B I.I VER	88780-8239	88794-1218	88794-1217
88732-8412	1200±30	USB_A TO MINI_B I.I VER	88780-8239	88780-9091	88780-9090
88732-8910	2000±30	USB_A TO MINI_B I.I VER	88780-8249	88780-9091	88780-9090
88732-8810	1800±30	USB_A TO MINI_B I.I VER	88780-8249	88780-9091	88780-9090
88732-8710	1500±30	USB_A TO MINI_B I.I VER	88780-8249	88780-9091	88780-9090
88732-8610	1000±30	USB_A TO MINI_B I.I VER	88780-8249	88794-1218	88794-1217
88732-8510	800±30	USB_A TO MINI_B I.I VER	88780-8249	88794-1218	88794-1217
88732-8410	1200±30	USB_A TO MINI_B I.I VER	88780-8249	88780-9091	88780-9090
MX P/N	CABLE LENGTH	DESCRIPTION	CABLE P/N	TERM. E	TERM. F

ENTER DESCRIPTION EC NO: DG2006-0150 DRWN: JFZHENG CHKD: APPR: DQLUO	2006/01/09 2006/01/09 2006/01/16	DESCRIPTION REV	QUALITY SYMBOLS	GENERAL TOLERANCES (UNLESS SPECIFIED)	DIMENSION STYLE	SCALE	DESIGN UNITS	THIRD ANGLE PROJECTION
			▽=0 ▽=3	mm INCH	MM ONLY	---	METRIC	
			4 PLACES ± --- ± ---	DRAWN BY DATE	TITLE			
			3 PLACES ± --- ± ---	JFZHENG 2006/01/07	USB1.1, A TO MINIB CABLE ASS'Y(WHITE)			
2 PLACES ± --- ± ---	CHECKED BY DATE							
1 PLACE ± --- ± ---	JFZHENG 2006/01/07							
ANGULAR ±1/2°	APPROVED BY DATE							
	DQLUO 2006/01/07	MOLEX INCORPORATED						
	MATERIAL NO.	DOCUMENT NO.	SHEET NO.					
	88732-8x1x	SD-887328510	2 OF 2					
	SIZE	THIS DRAWING CONTAINS INFORMATION THAT IS PROPRIETARY TO MOLEX INCORPORATED AND SHOULD NOT BE USED WITHOUT WRITTEN PERMISSION						
	A 4							